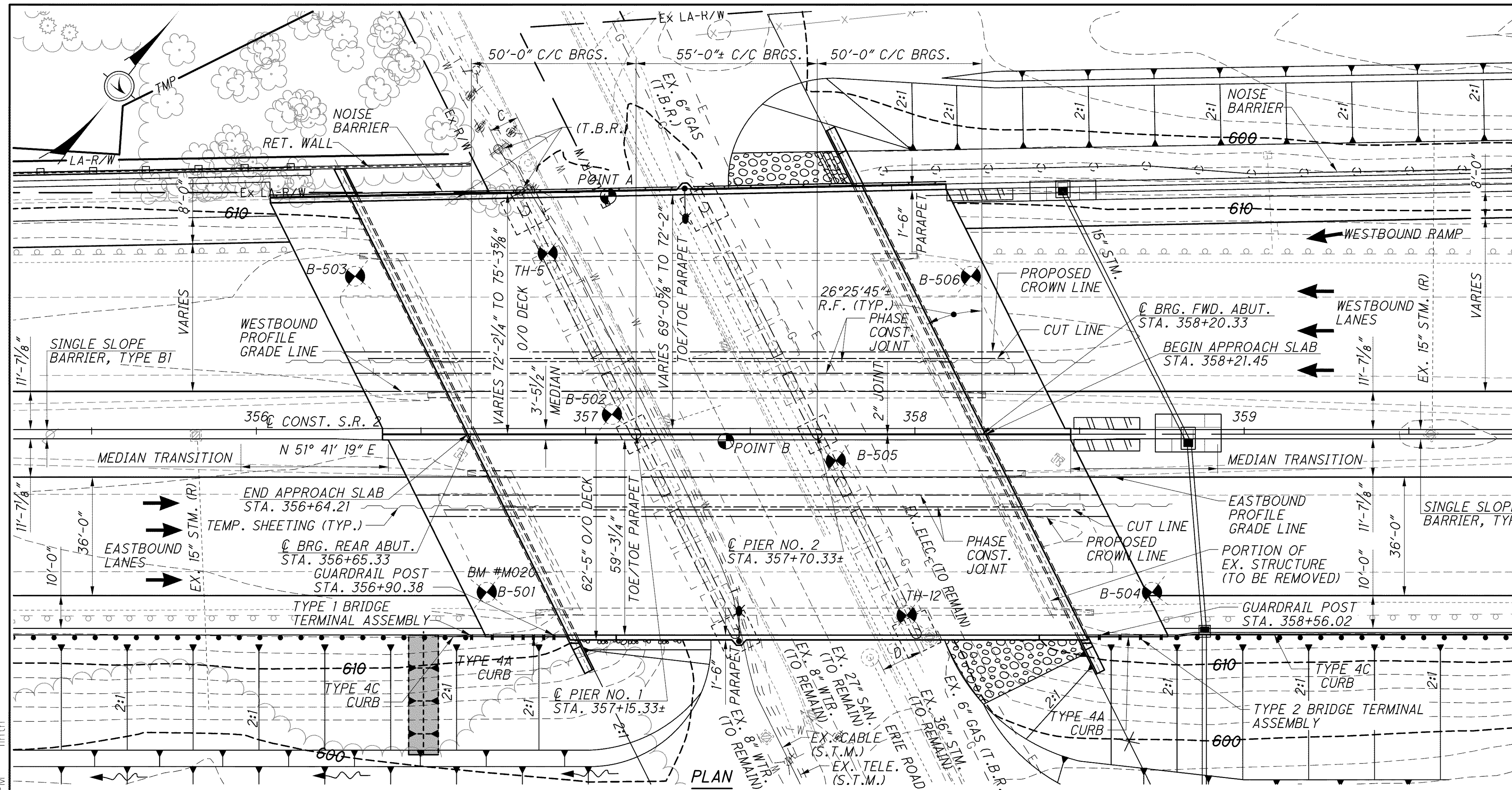


J:\LAK\13486\bridge\LAK002_0486C\sheets\02_0486CSP001.dgn 03-JUL-2008 1:32PM



BENCHMARK DATA

BM #M020 STA. 356+68.45	ELEV. 616.20	OFFSET 58.16' RT.
BM #M021 STA. 365+79.55	ELEV. 608.48	OFFSET 58.38' RT.

FOR ADDITIONAL BENCHMARK INFORMATION. SEE ROADWAY PLAN SHEET 9/1679

NOTES

EARTHWORK LIMITS SHOWN ARE APPROXIMATE. ACTUAL SLOPES SHALL CONFORM TO PLAN CROSS SECTIONS.

DESIGN TRAFFIC:
 2010 ADT = 68,050 2010 ADTT = 3,400
 2030 ADT = 81,500 2030 ADTT = 4,075
 DIRECTIONAL DISTRIBUTION = 70%

LEGEND

- ⊗ ORIGINAL SOIL BORING LOCATION (B501 TO B506)
- ⊙ 15.0' REQUIRED MINIMUM VERTICAL CLEARANCE
- POINT A-15.53' ACTUAL MINIMUM VERTICAL CLEARANCE
- POINT B-17.80' ACTUAL MINIMUM VERTICAL CLEARANCE

(T.B.R.) - TO BE RELOCATED
 (R) - TO BE REMOVED
 (S.T.M.) - SHIFT TO MISS PROPOSED FOOTING AT BOTH ENDS OF PIER 1
 REQUIRED MINIMUM HORIZONTAL CLEARANCE = 4.0' (CONC. BARRIER)
 PREFERRED MINIMUM HORIZONTAL CLEARANCE = 13.0' (CLEAR ZONE)
 ACTUAL MINIMUM HORIZONTAL CLEARANCE: C = 9.78' D = 12.42'

FOR LIST OF ABBREVIATIONS SEE SHEET 4/70.

SOIL BORING LOCATIONS

BORING	STATION, OFFSET	APPROX. TOP OF ROCK
B-501	STA. 356+70, 48' RT.	EL. 588.8
B-502	STA. 357+08, 6' LT.	EL. 590.5
B-503	STA. 356+30, 48' LT.	EL. 588.4
B-504	STA. 358+72, 48' RT.	EL. 584.7
B-505	STA. 357+76, 8' RT.	EL. 588.5
B-506	STA. 358+17, 48' LT.	EL. 586.9
TH-5	STA. 356+89, 55' LT.	EL. 587.5
TH-12	STA. 357+98, 55' RT.	EL. 584.5

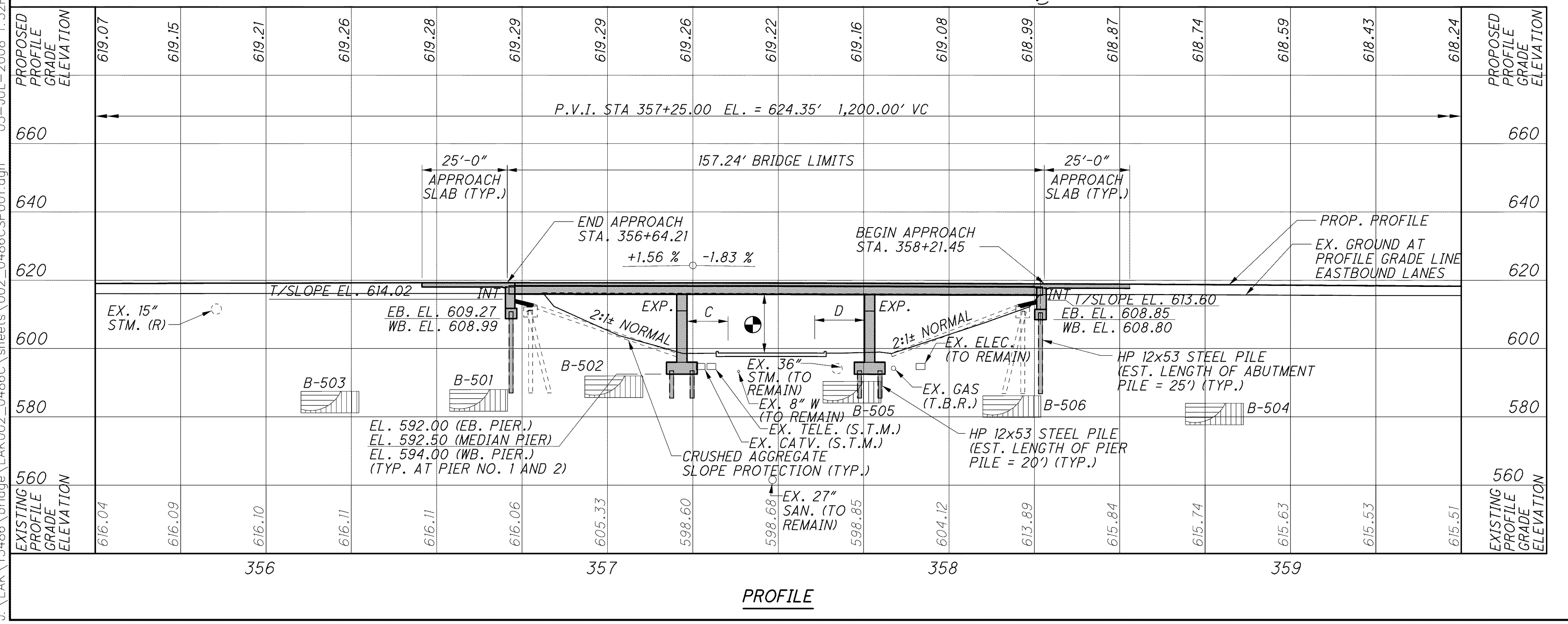
EXISTING STRUCTURE

TYPE: TWO, 3-SPAN CONTINUOUS REINFORCED CONCRETE SLAB BRIDGES WITH REINFORCED CONCRETE SUBSTRUCTURES ON PILES
 SPANS: 44'-0"±, 55'-0"±, 44'-0"± C/C BEARING
 ROADWAY: TWO AT 42'-0"± F/F RAILING
 SKEW: 26°25'45"± RF
 LOADING: CF2000
 DATE BUILT: 1960
 STRUCTURE FILE NO.: 4300696 (L), 4300726 (R)
 APPROACH SLABS: AS-1-54, 25'-0"± LONG
 ALIGNMENT: TANGENT
 CROWN: 0.016' PER FOOT
 WEARING SURFACE: ASPHALT CONCRETE

PROPOSED STRUCTURE

TYPE: TWO, 3-SPAN CONTINUOUS STEEL BEAM BRIDGES (A709 GRADE 50) WITH COMPOSITE REINFORCED CONCRETE DECKS SUPPORTED ON INTEGRAL ABUTMENTS AND CAP AND COLUMN PIERS ON PILING.
 SPANS: 50'-0", 55'-0" AND 50'-0" C/C BEARINGS
 ROADWAY: 59'-3/4" TOE/TOE PARAPETS (RIGHT) AND 69'-0 5/8" TO 72'-2" TOE/TOE PARAPETS (LEFT)
 LOADING: HS25 CASE I AND ALTERNATE MILITARY LOADING WITH F.W.S. = 60 PSF

SKEW: 26°25'45" RF
 WEARING SURFACE: MONOLITHIC CONCRETE
 APPROACH SLABS: AS-1-81, 25'-0" LONG, AS PER PLAN
 ALIGNMENT: TANGENT
 CROWN: 0.016' PER FOOT
 COORDINATES: LATITUDE: 41°39'03" N LONGITUDE: 81°24'47" W



DESIGN AGENCY: PARSONS BRINCKERHOFF QUADE & DOUGLAS, INC. 6th W. SUPERIOR AVE., SUITE 400 CLEVELAND, OHIO 44113
 DATE: 6-19-08
 DRAWN: LEL
 CHECKED: EUC
 DESIGNED: P.J.L.
 LAKE COUNTY
 BRIDGE NO. LAK-2-0486 L&R
 STATE ROUTE 2 OVER ERIE ROAD
 STA. 356+64.21 TO STA. 358+21.45
 SITE PLAN
 LAK-2-3.32
 PID 13486
 1/70
 1393/1679