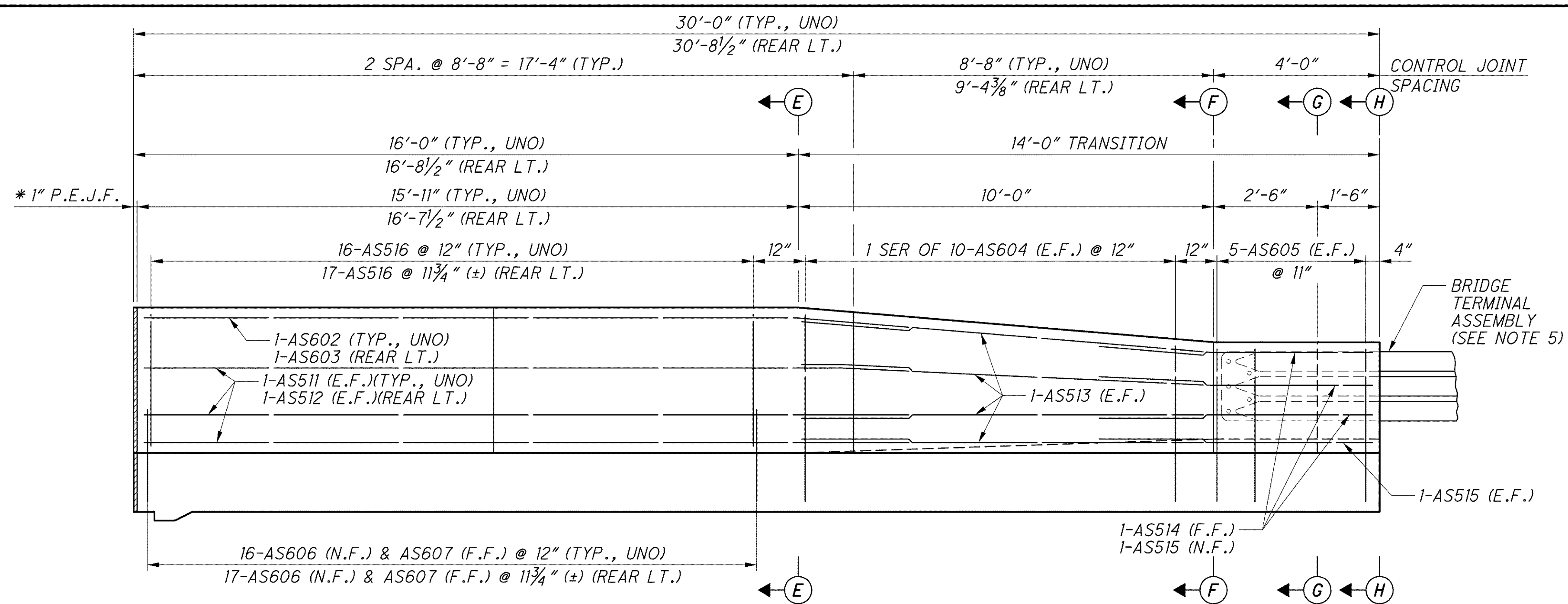
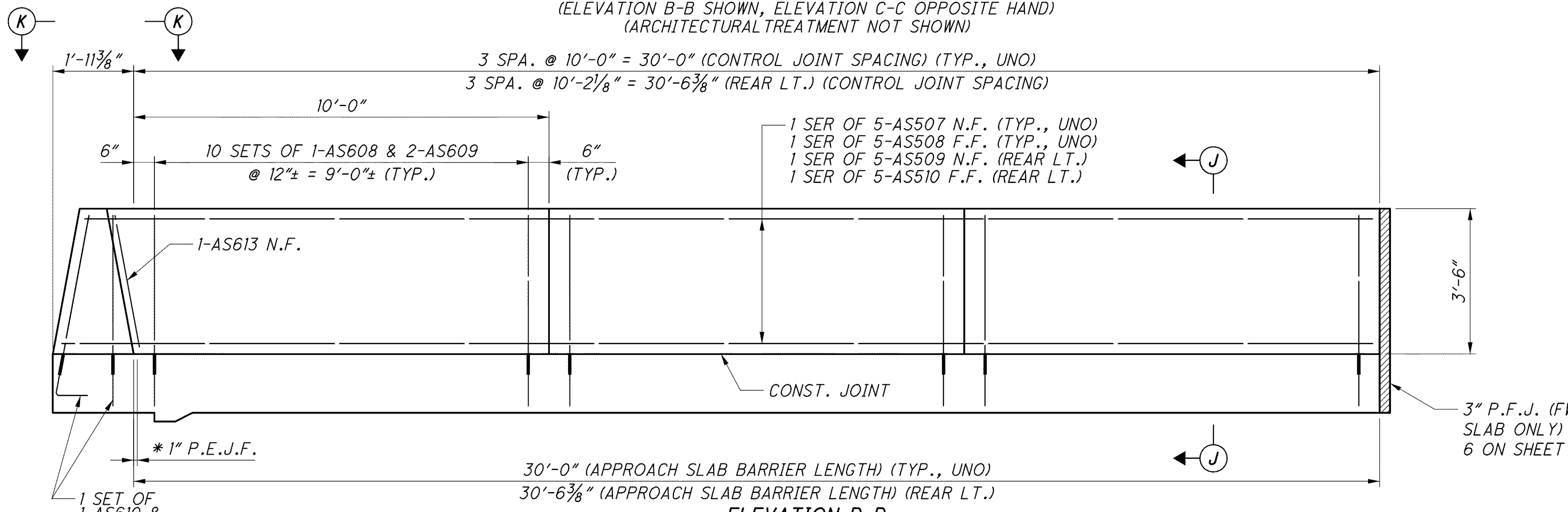


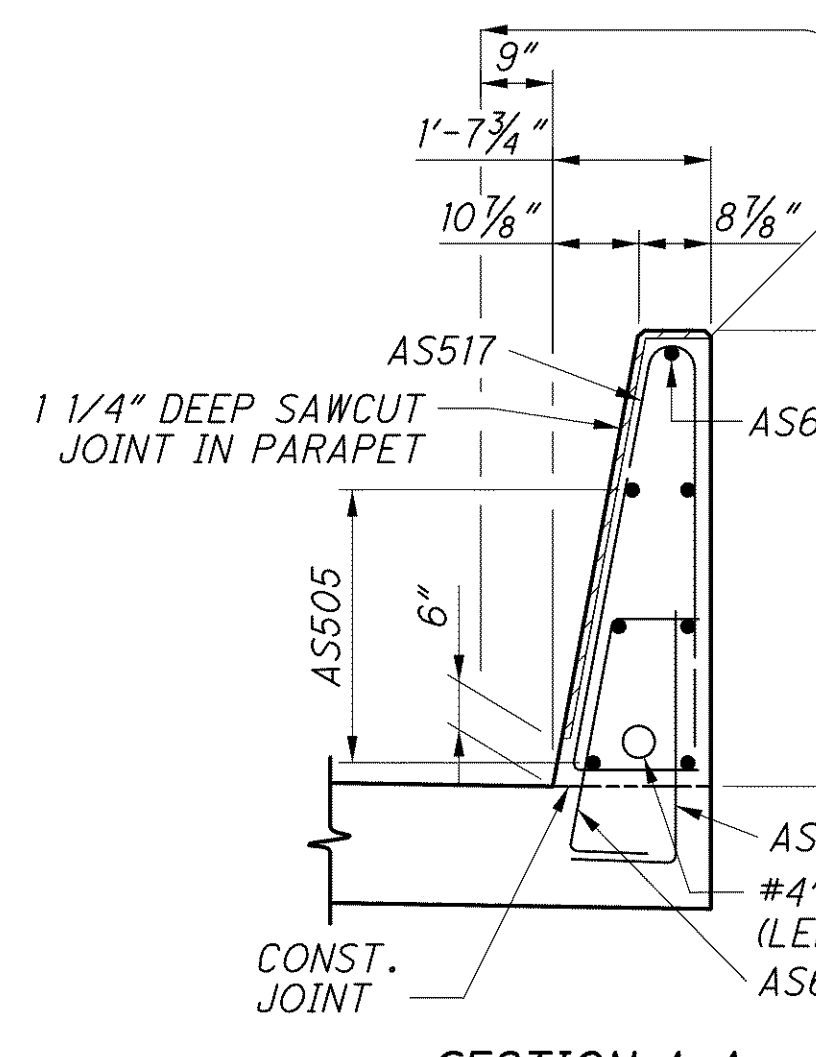
J:\LAK\13486\bridge\LAK002_0400C\sheets\002_0400CMD003.dgn 03-JUL-2008 1:58PM lintn



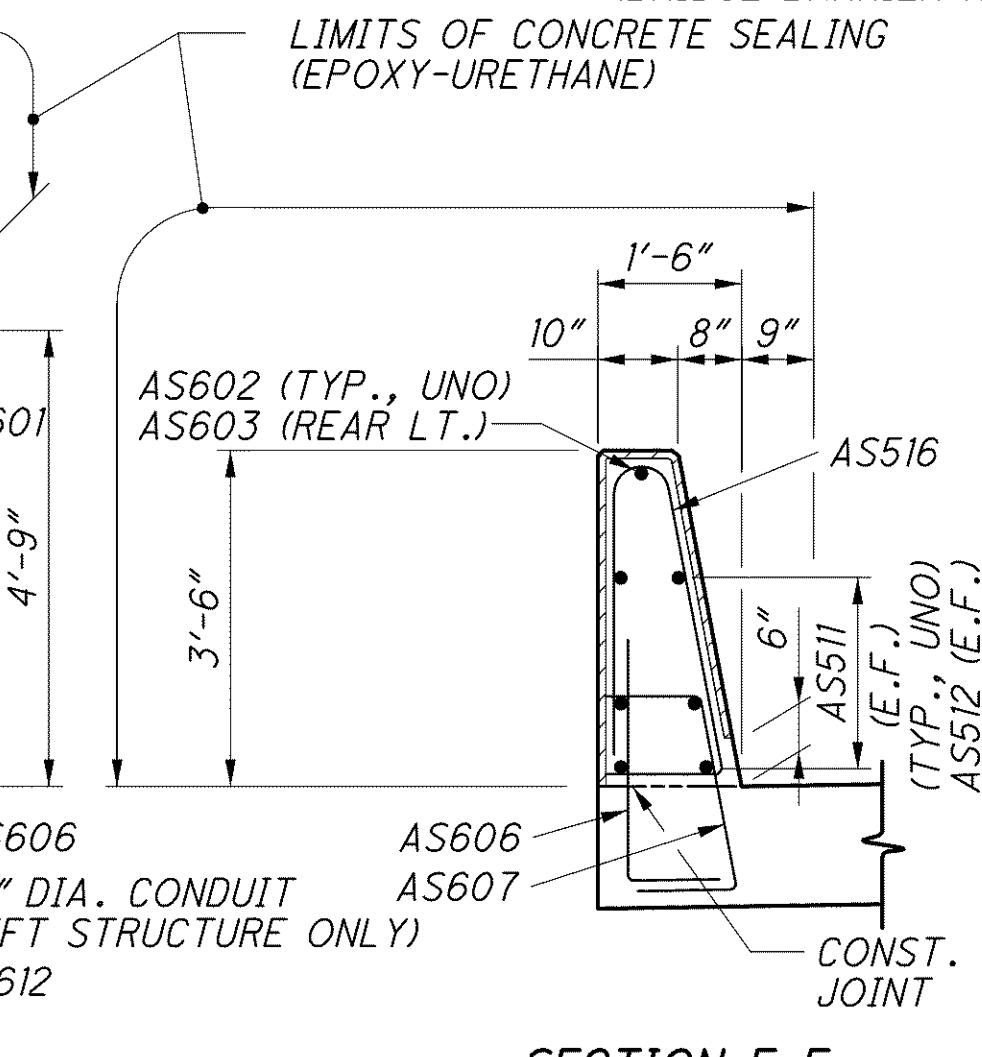
ELEVATION B-B
ELEVATION C-C
(ELEVATION B-B SHOWN, ELEVATION C-C OPPOSITE HAND)
(ARCHITECTURAL TREATMENT NOT SHOWN)



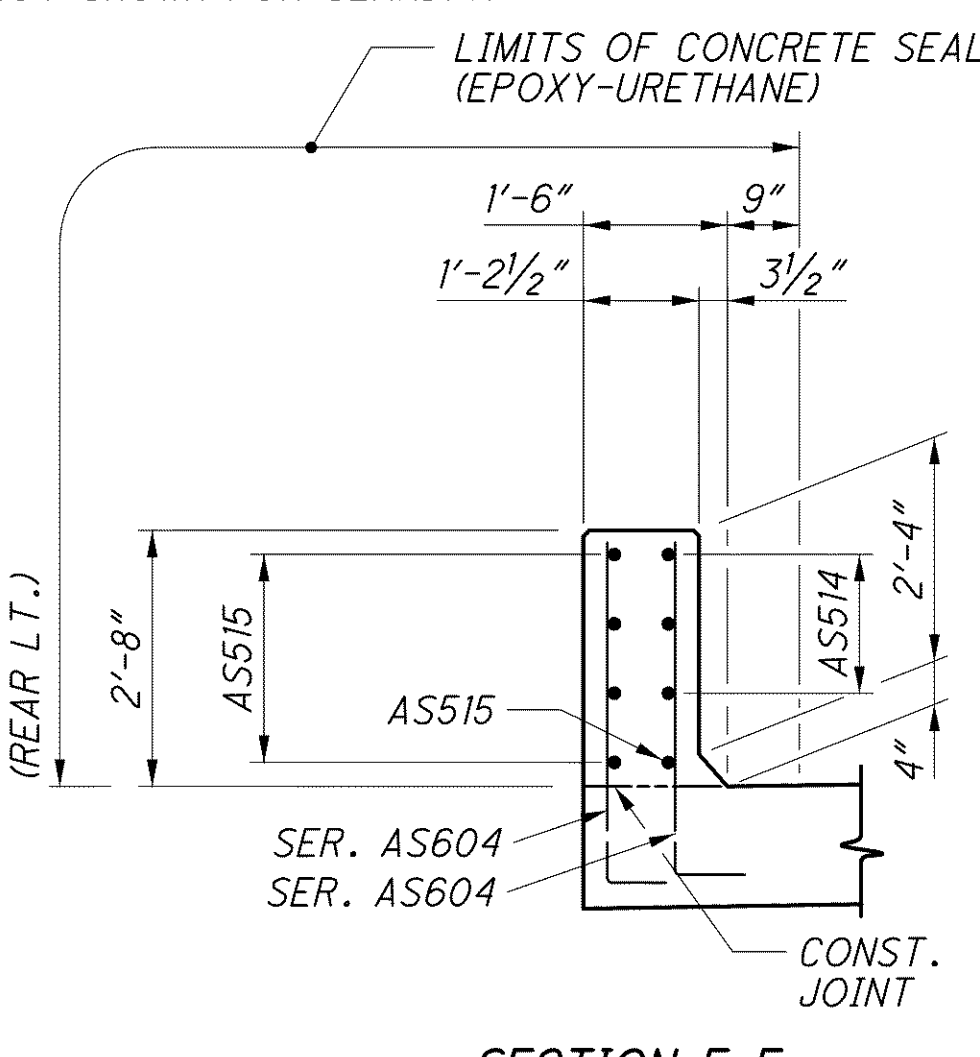
ELEVATION D-D
(BRIDGE BARRIER NOT SHOWN FOR CLARITY)



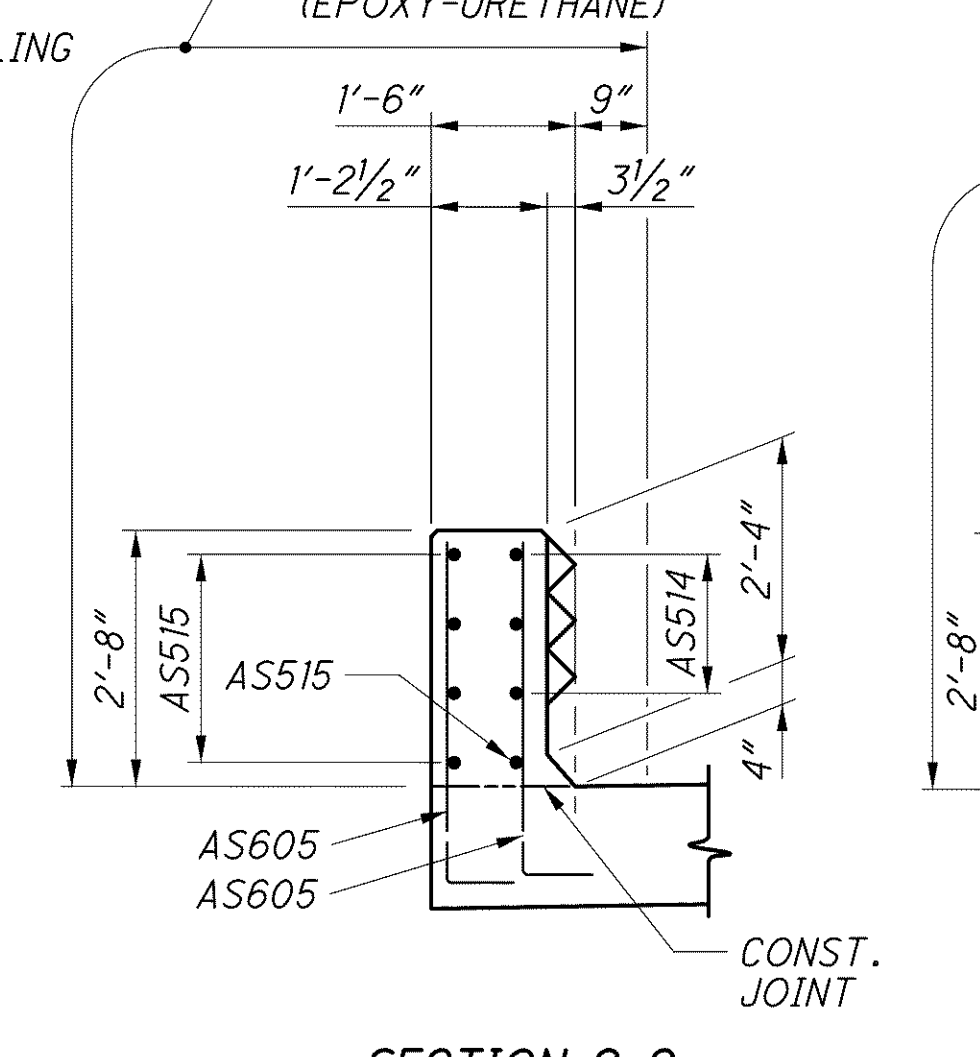
SECTION A-A
- COST INCLUDED WITH LIGHTING QUANTITIES FOR PAYMENT.



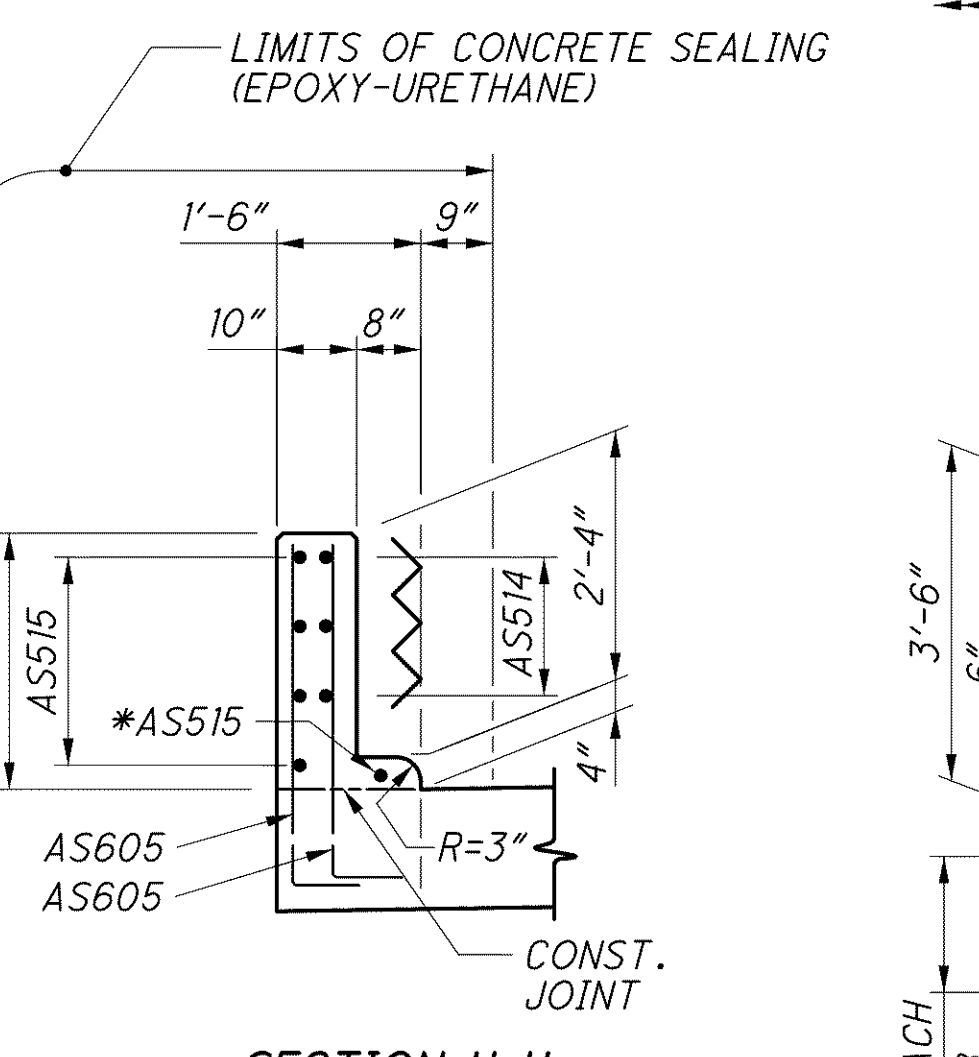
SECTION E-E



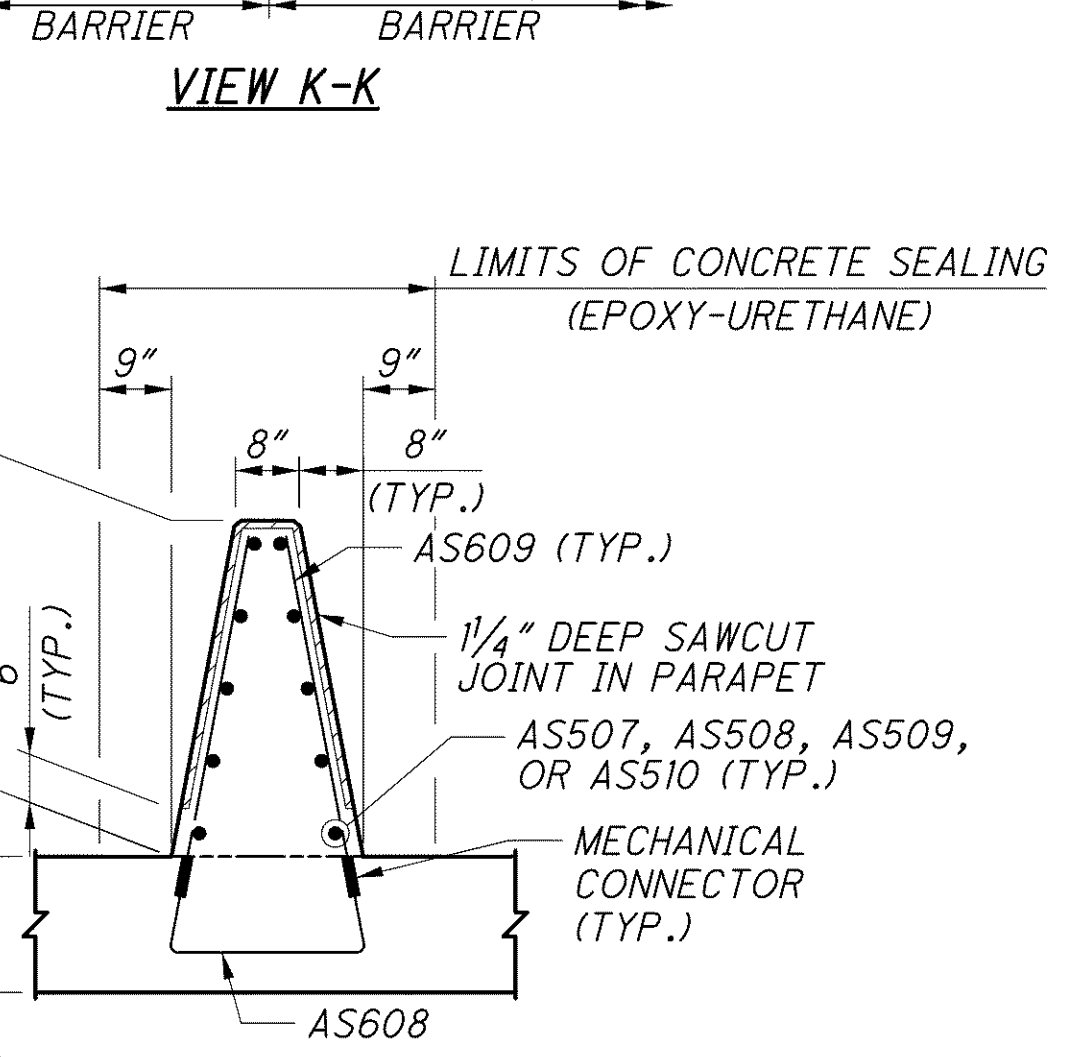
SECTION F-F



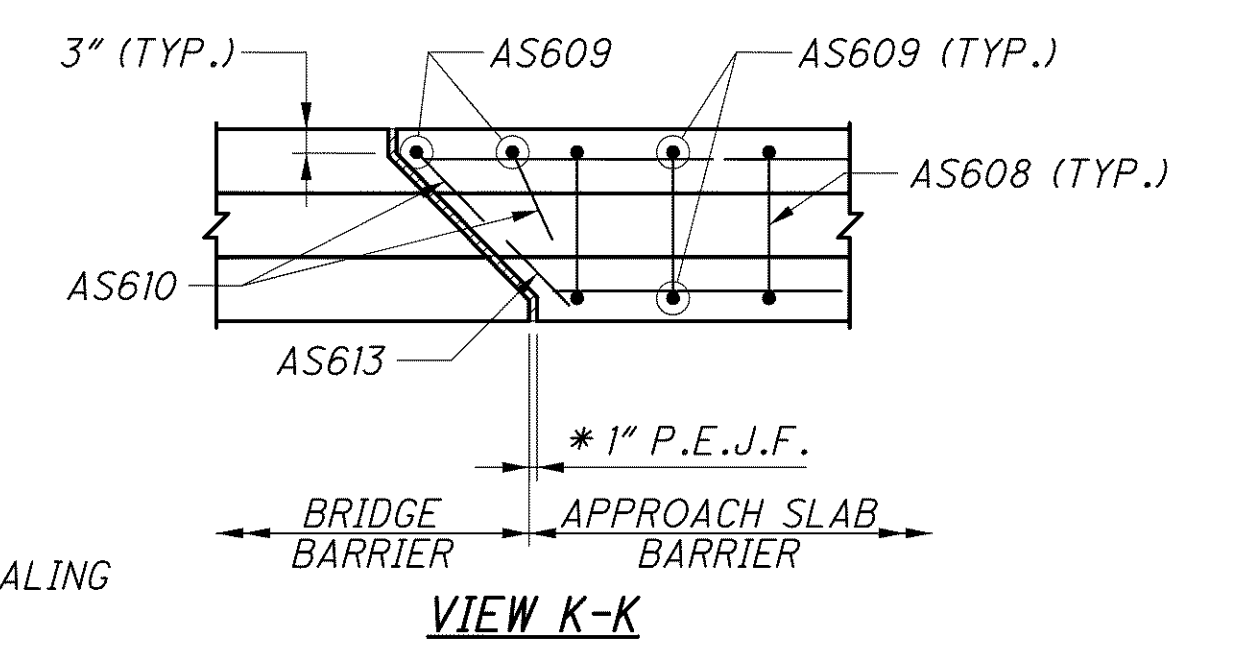
SECTION G-G



SECTION H-H
* FIELD BEND IF NECESSARY



SECTION J-J



VIEW K-K

NOTES

1. MINIMUM BAR LAPS ARE AS FOLLOWS:
#5 BARS = 36"
2. FOR ADDITIONAL SINGLE SLOPE DEFLECTOR PARAPET TYPE SEE O.D.O.T. STANDARD DRAWING SBR-1-91.
3. FOR ADDITIONAL APPROACH SLAB DETAILS SEE O.D.O.T. STANDARD DRAWING AS-1-81.
4. FOR ADDITIONAL APPROACH SLAB DETAILS SEE SHEETS [59/67] AND [61/67].
5. FOR BRIDGE TERMINAL ASSEMBLIES SEE ROADWAY STANDARD DRAWINGS GR-3.1 AND GR-3.2. SEE ROADWAY PLANS FOR DETAILS AND PAYMENT.
6. FOR LOCATION OF SECTION A-A, ELEVATIONS B-B AND C-C, SEE SHEET [61/67].
7. FOR LIST OF ABBREVIATIONS, SEE SHEET [4/67].
8. FOR 4" DIA. CONDUIT EXPANSION/DEFLECTION FITTING, SEE DETAIL 1 ON SHEET [59/67].

* - COST INCLUDED WITH APPROACH SLAB FOR PAYMENT.