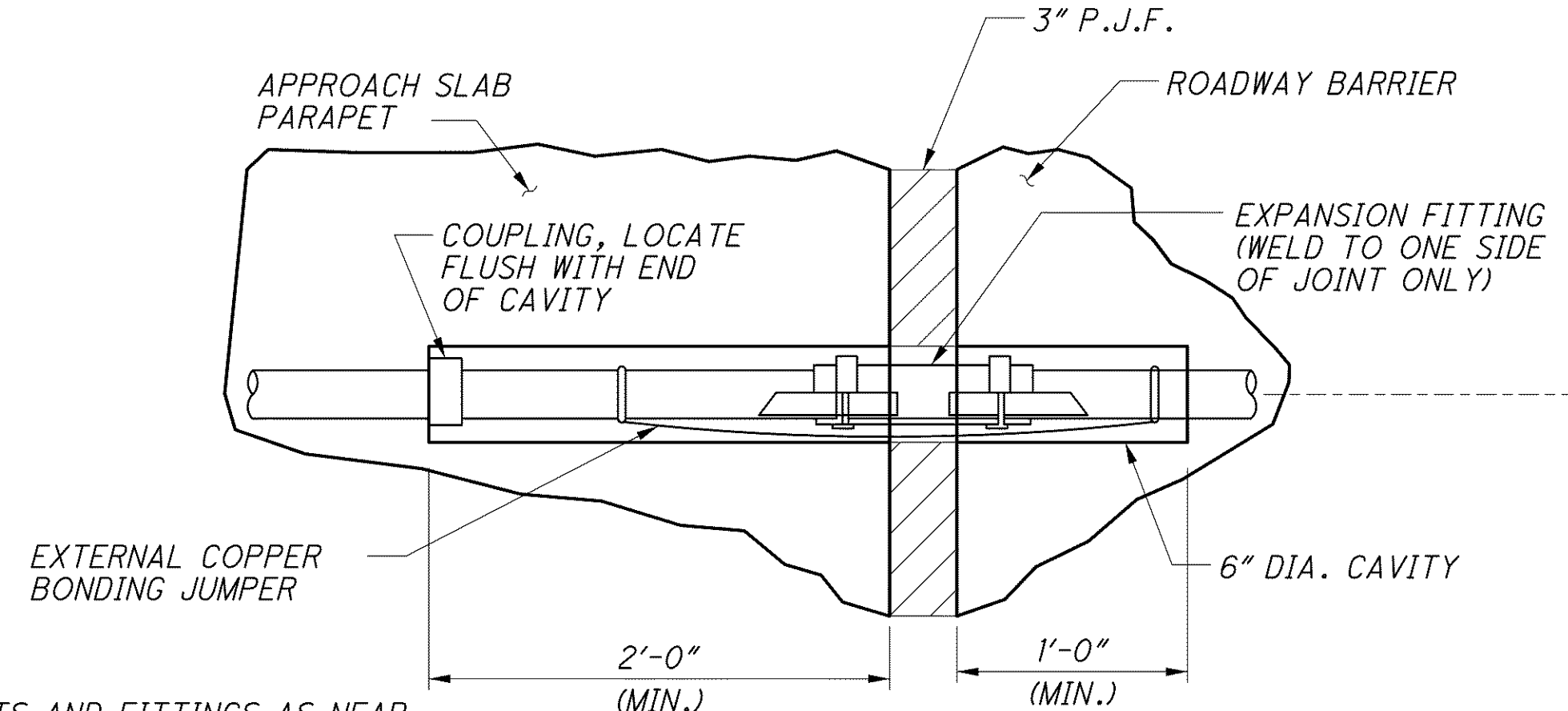


| POINT | LEFT REAR APPROACH SLAB |        |        | LEFT FWD. APPROACH SLAB |        |        | RIGHT REAR APPROACH SLAB |        |        | RIGHT FWD. APPROACH SLAB |        |        |
|-------|-------------------------|--------|--------|-------------------------|--------|--------|--------------------------|--------|--------|--------------------------|--------|--------|
|       | STA.                    | OFF.   | ELEV.  | STA.                    | OFF.   | ELEV.  | STA.                     | OFF.   | ELEV.  | STA.                     | OFF.   | ELEV.  |
| A     | 309+61.35               | 93.00' | 647.65 | 312+22.44               | 93.00' | 648.28 | 310+56.86                | 1.73'  | 649.85 | 313+14.89                | 1.73'  | 648.13 |
| B     | 309+30.14               | 93.00' | 647.56 | 311+92.44               | 93.00' | 648.44 | 310+26.68                | 1.73'  | 649.82 | 312+84.89                | 1.73'  | 648.43 |
| C     | 310+06.31               | 49.00' | 649.08 | 312+65.38               | 49.00' | 648.70 | 310+67.92                | 13.00' | 650.09 | 313+25.88                | 13.00' | 648.46 |
| D     | 309+75.58               | 49.00' | 649.00 | 312+35.38               | 49.00' | 648.91 | 310+37.84                | 13.00' | 650.12 | 312+95.90                | 13.00' | 648.78 |
| E     | 310+08.92               | 46.42' | 649.16 | 312+67.90               | 46.42' | 648.72 | 310+79.61                | 25.00' | 650.31 | 313+37.59                | 25.00' | 648.52 |
| F     | 309+78.22               | 46.42' | 649.08 | 312+37.90               | 46.42' | 648.93 | 310+49.65                | 25.00' | 650.40 | 313+07.60                | 25.00' | 648.85 |
| G     | 310+30.40               | 25.00' | 649.81 | 312+88.80               | 25.00' | 648.90 | 311+00.51                | 46.42' | 650.61 | 313+58.49                | 46.42' | 647.99 |
| H     | 309+99.92               | 25.00' | 649.76 | 312+58.80               | 25.00' | 649.13 | 310+70.57                | 46.42' | 650.79 | 313+28.49                | 46.42' | 648.42 |
| J     | 310+42.32               | 13.00' | 650.12 | 313+00.51               | 13.00' | 648.73 | 311+03.03                | 49.00' | 650.63 | 313+61.01                | 49.00' | 647.92 |
| K     | 310+11.98               | 13.00' | 650.12 | 312+70.51               | 13.00' | 649.02 | 310+73.08                | 49.00' | 650.83 | 313+31.01                | 49.00' | 648.36 |
| L     | 310+44.80               | 10.50' | 650.18 | 313+02.95               | 10.50' | 648.69 | 311+45.97                | 93.00' | 649.63 | 314+03.95                | 93.00' | 646.82 |
| M     | 310+14.48               | 10.50' | 650.19 | 312+72.95               | 10.50' | 648.99 | 311+15.97                | 93.00' | 649.83 | 313+73.95                | 93.00' | 647.02 |
| N     | 310+53.46               | 1.73'  | 649.81 | 313+11.51               | 1.73'  | 648.24 | 311+06.68                | 52.74' | 650.55 | N/A                      | N/A    | N/A    |
| P     | 310+23.23               | 1.73'  | 649.83 | 312+81.51               | 1.73'  | 648.55 | N/A                      | N/A    | N/A    | N/A                      | N/A    | N/A    |

OFFSET MEASURED FROM @ CONSTRUCTION S.R. 2



DETAIL 1

NOTE: LOCATE CONDUITS AND FITTINGS AS NEAR TO TOP OF CAVITY AS POSSIBLE. COST SHALL BE INCLUDED WITH THE UNIT BID PRICE OF CONDUIT. (SEE LIGHTING PLANS FOR QUANTITIES AND PAYMENT) FOR ADDITIONAL NOTES, SEE ODOT STD. DWG. HL-30.32.

NOTES

- \* INDICATES SEE DETAIL A ON SHEET 42/67.
- FOR LIST OF ABBREVIATIONS, SEE SHEET 4/67.
- FOR LOCATION OF DETAIL 1, SEE SHEET 61/67.

j:\LAK\13486\bridge\LAK002\_0400C\sheets\02\_0400CMD004.dgn 03-JUL-2008 1:54PM lintn