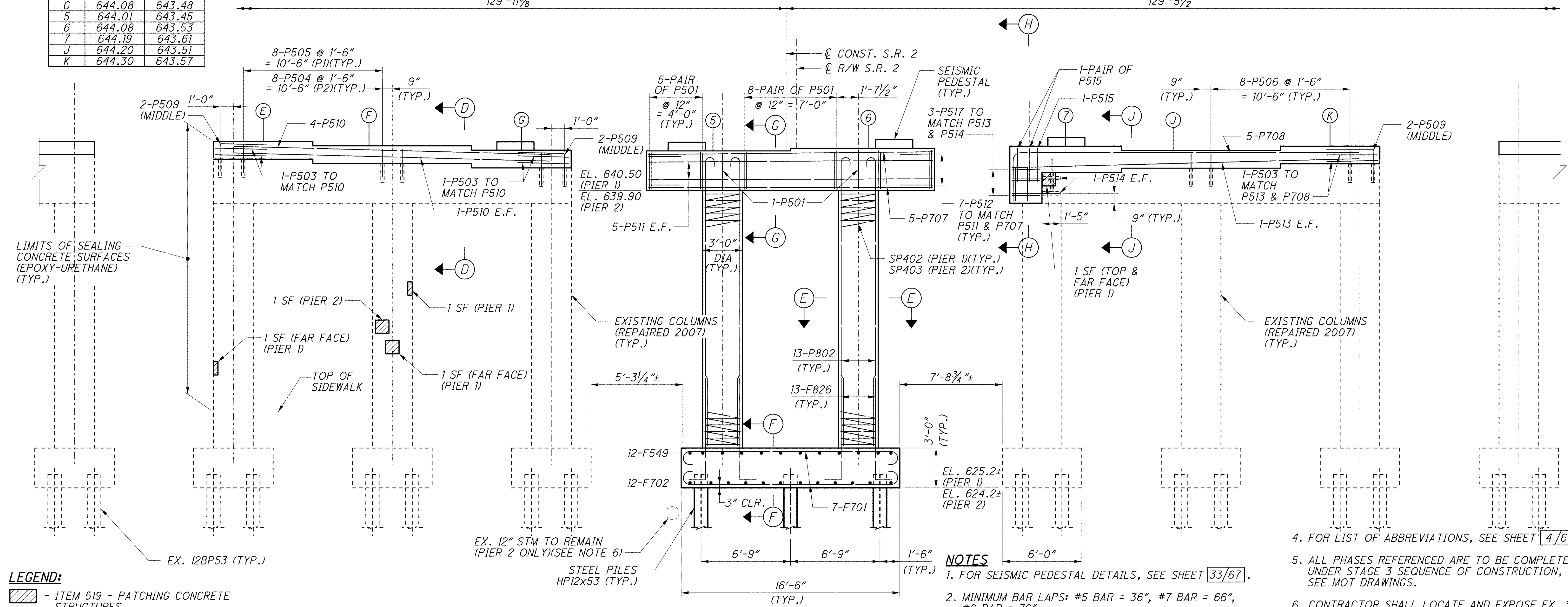


PARTIAL PLAN

ELEVATION TABLE		
POINT	PIER 1	PIER 2
E	643.89	643.66
F	643.99	643.58
G	644.08	643.48
5	644.01	643.45
6	644.08	643.53
7	644.19	643.61
J	644.20	643.51
K	644.30	643.57



PARTIAL ELEVATION

LEGEND:
 - ITEM 519 - PATCHING CONCRETE STRUCTURES
 NOTE: PATCHING OF THE RECENTLY REINFORCED FIBER WRAPPED COLUMNS SHALL BE AT THE DISCRETION OF THE FIELD ENGINEER.

- NOTES**
- FOR SEISMIC PEDESTAL DETAILS, SEE SHEET 33/67.
 - MINIMUM BAR LAPS: #5 BAR = 36", #7 BAR = 66", #8 BAR = 76"
 - FOR SECTIONS D-D, E-E, F-F, G-G, H-H, AND J-J, SEE SHEET 33/67.
 - FOR LIST OF ABBREVIATIONS, SEE SHEET 4/67.
 - ALL PHASES REFERENCED ARE TO BE COMPLETED UNDER STAGE 3 SEQUENCE OF CONSTRUCTION, SEE MOT DRAWINGS.
 - CONTRACTOR SHALL LOCATE AND EXPOSE EX. STM PIPE PRIOR TO DRIVING PILES. CONTRACTOR SHALL NOT DAMAGE STM. PIPE DURING WORK. COST SHALL BE INCLUDED WITH ITEM 507, STEEL HPI2x53, DRIVEN, AS PER PLAN.

j:\LAK\13486\bridge\LAK002_0400C\sheets\02_0400CPI002.dgn 03-JUL-2008 1:43PM imtn