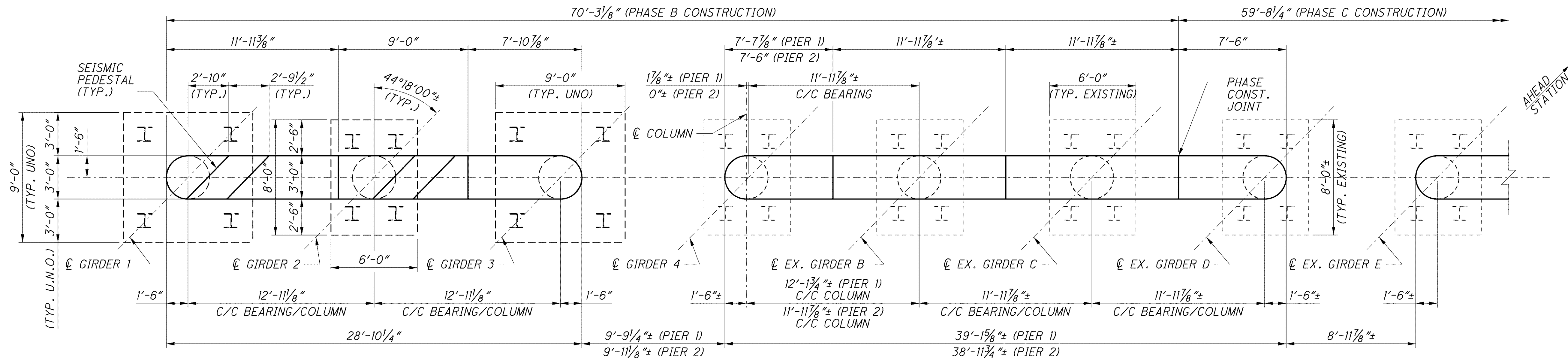
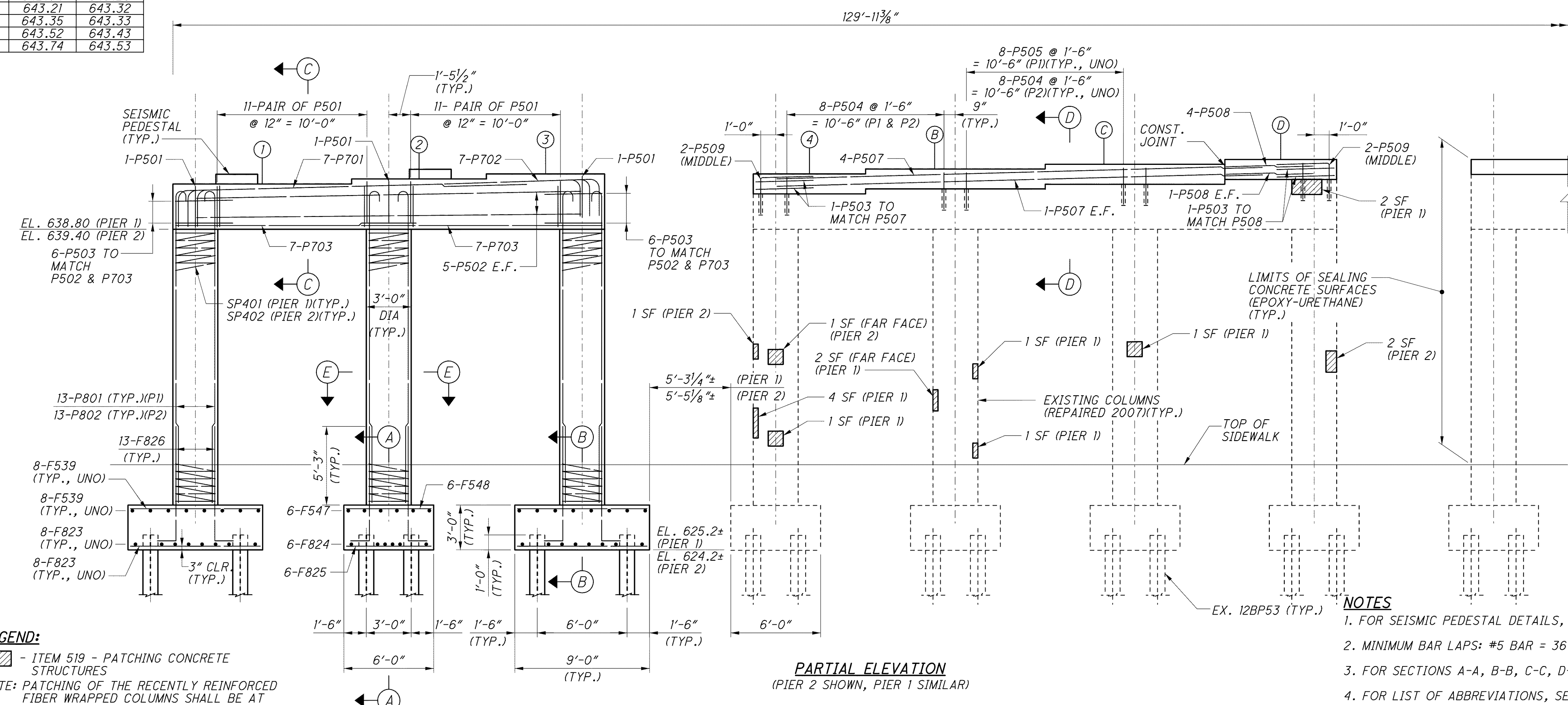


J:\LAK\13486\bridge\LAK002_0400C\sheets\002_0400CPI001.dgn 03-JUL-2008 1:43PM lintr



PARTIAL PLAN

ELEVATION TABLE		
POINT	PIER 1	PIER 2
1	642.34	642.96
2	642.65	643.08
3	642.94	643.20
4	643.21	643.32
B	643.35	643.33
C	643.52	643.43
D	643.74	643.53



PARTIAL ELEVATION
(PIER 2 SHOWN, PIER 1 SIMILAR)

LEGEND:
 - ITEM 519 - PATCHING CONCRETE STRUCTURES
 NOTE: PATCHING OF THE RECENTLY REINFORCED FIBER WRAPPED COLUMNS SHALL BE AT THE DISCRETION OF THE FIELD ENGINEER.

- NOTES**
1. FOR SEISMIC PEDESTAL DETAILS, SEE SHEET 33/67.
 2. MINIMUM BAR LAPS: #5 BAR = 36", #7 BAR = 66", #8 BAR = 76"
 3. FOR SECTIONS A-A, B-B, C-C, D-D, AND E-E, SEE SHEET 33/67.
 4. FOR LIST OF ABBREVIATIONS, SEE SHEET 4/67.
 5. ALL PHASES REFERENCED ARE TO BE COMPLETED UNDER STAGE 3 SEQUENCE OF CONSTRUCTION, SEE MOT DRAWINGS.