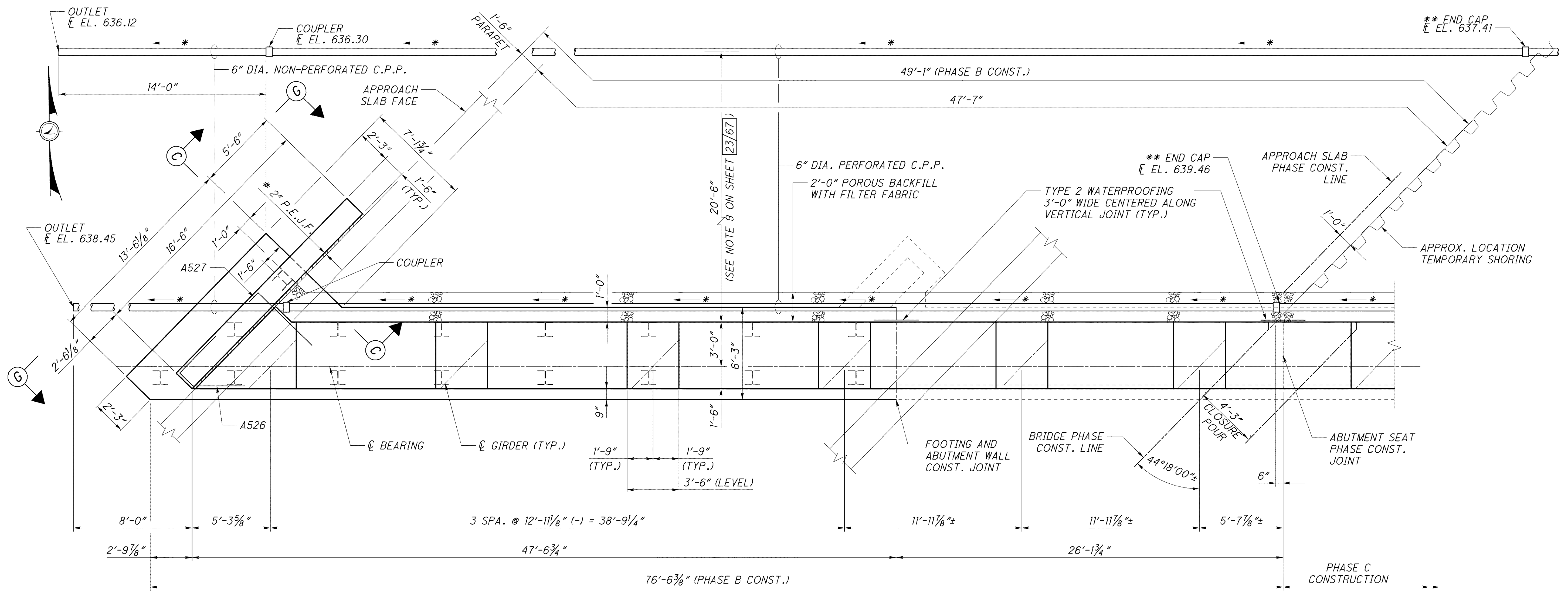


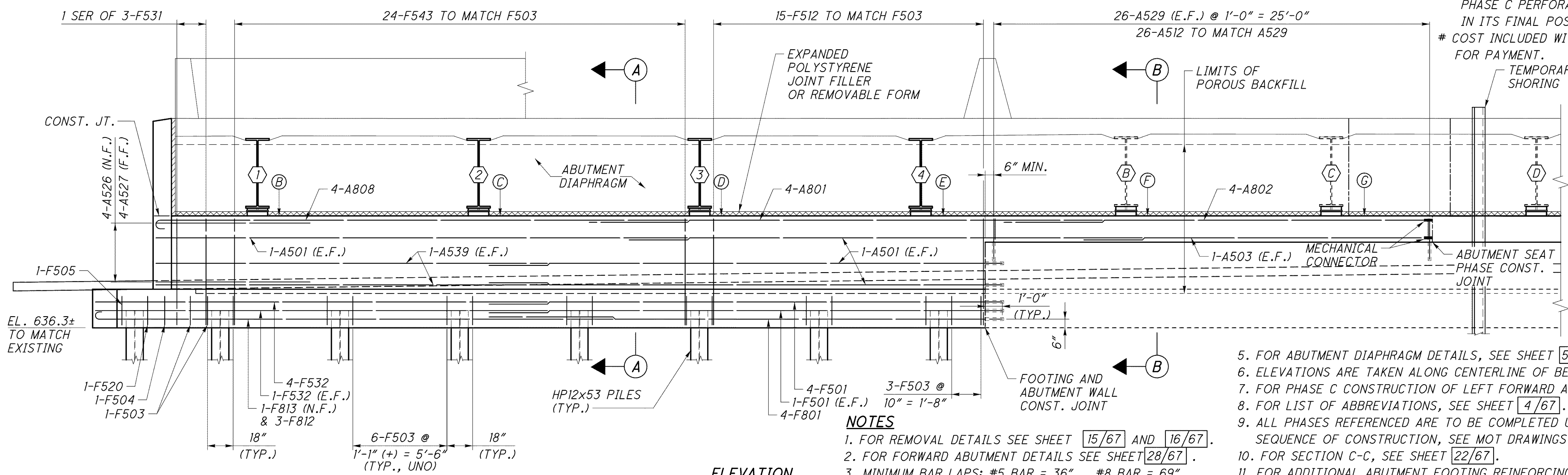
j:\LAK\13486\bridge\LAK002\_0400C\sheets\02\_0400CAF001.dgn 03-JUL-2008 1:41PM lintn



**PLAN**  
(LEFT FORWARD ABUTMENT)

**LEGEND**  
 \* MINIMUM SLOPE OF PIPE IS 1/8 IN./FT.  
 \*\* PLACE TEMPORARY END CAP ON PERFORATED C.P.P. AT PHASE B CONSTRUCTION JOINT UNTIL PHASE C PERFORATED C.P.P. CAN BE ATTACHED IN ITS FINAL POSITION.  
 # COST INCLUDED WITH SUBSTRUCTURE CONCRETE FOR PAYMENT.

ELEVATION TABLE	
B	642.51
C	642.61
D	642.71
E	642.81
F	642.84
G	642.85



**ELEVATION**  
(LEFT FORWARD ABUTMENT)

**NOTES**  
 1. FOR REMOVAL DETAILS SEE SHEET [15/67] AND [16/67].  
 2. FOR FORWARD ABUTMENT DETAILS SEE SHEET [28/67].  
 3. MINIMUM BAR LAPS: #5 BAR = 36", #8 BAR = 69".  
 4. FOR SECTION A-A, B-B, AND VIEW G-G SEE SHEET [28/67].  
 5. FOR ABUTMENT DIAPHRAGM DETAILS, SEE SHEET [50/67].  
 6. ELEVATIONS ARE TAKEN ALONG CENTERLINE OF BEARING.  
 7. FOR PHASE C CONSTRUCTION OF LEFT FORWARD ABUTMENT SEE SHEET [25/67].  
 8. FOR LIST OF ABBREVIATIONS, SEE SHEET [4/67].  
 9. ALL PHASES REFERENCED ARE TO BE COMPLETED UNDER STAGE 3 SEQUENCE OF CONSTRUCTION, SEE MOT DRAWINGS.  
 10. FOR SECTION C-C, SEE SHEET [22/67].  
 11. FOR ADDITIONAL ABUTMENT FOOTING REINFORCING DETAILS, SEE SHEET [29/67].  
 12. FOR SOIL REINFORCING LIMITS, SEE SHEET [23/67].