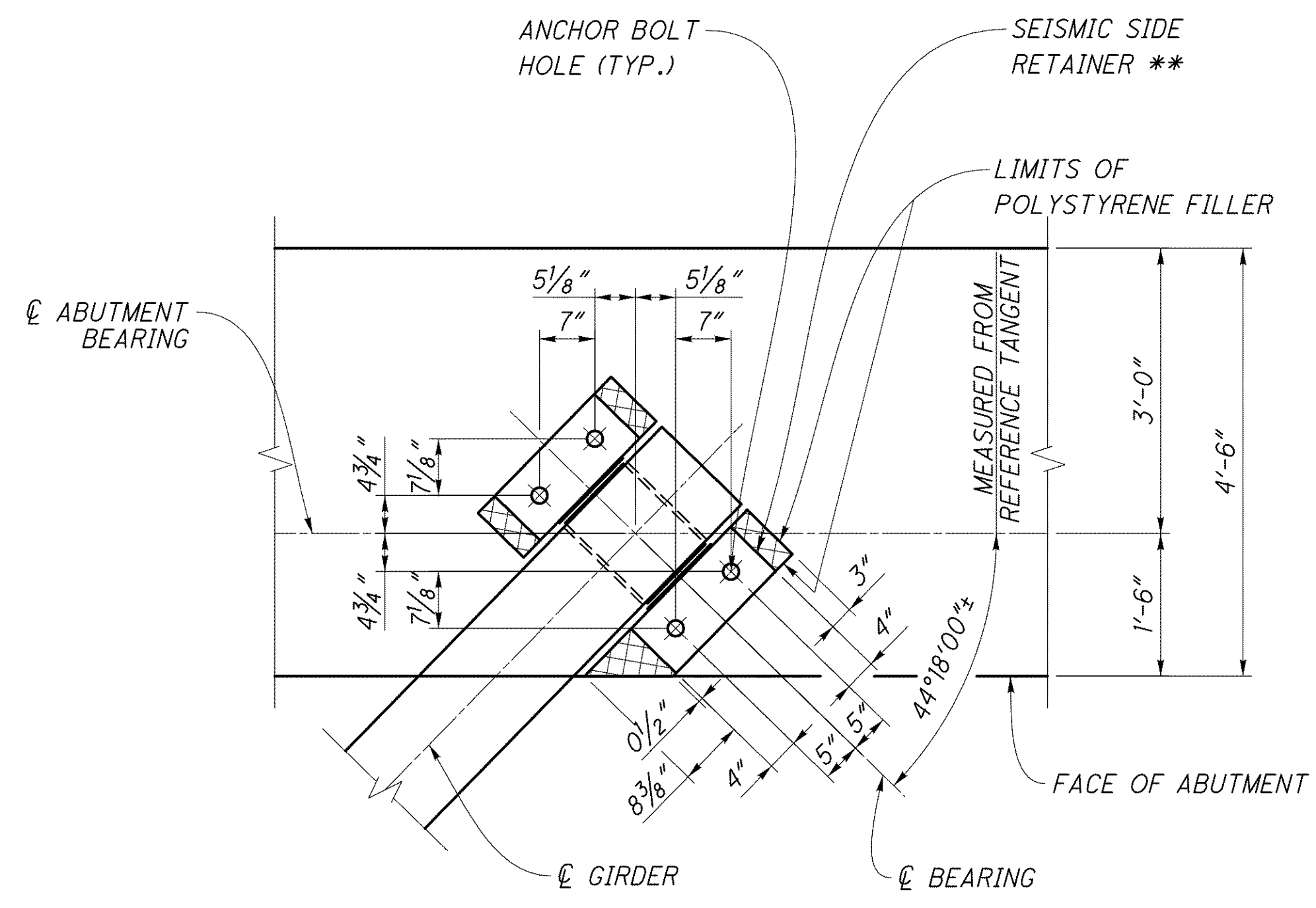
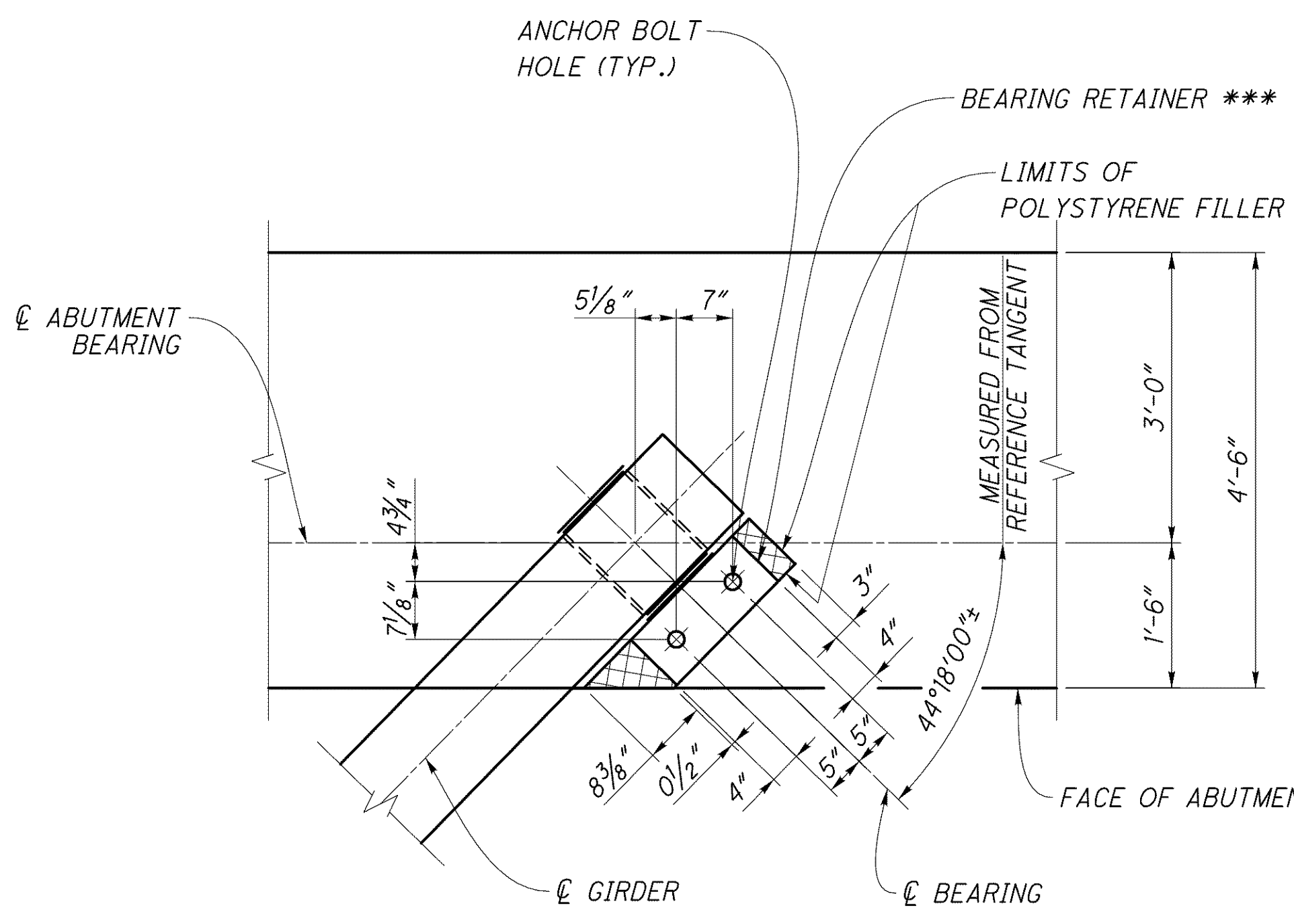


J:\LAK\13486\bridge\LAK002_0400C\sheets\02_0400CAR006.dgn 03-JUL-2008 1:41PM lintn



SEISMIC SIDE RETAINER ANCHOR PLAN
 (REAR ABUTMENT - RIGHT STRUCTURE AND FORWARD ABUTMENT - LEFT STRUCTURE SHOWN. REAR ABUTMENT - LEFT STRUCTURE AND FORWARD ABUTMENT - RIGHT STRUCTURE SIMILAR)



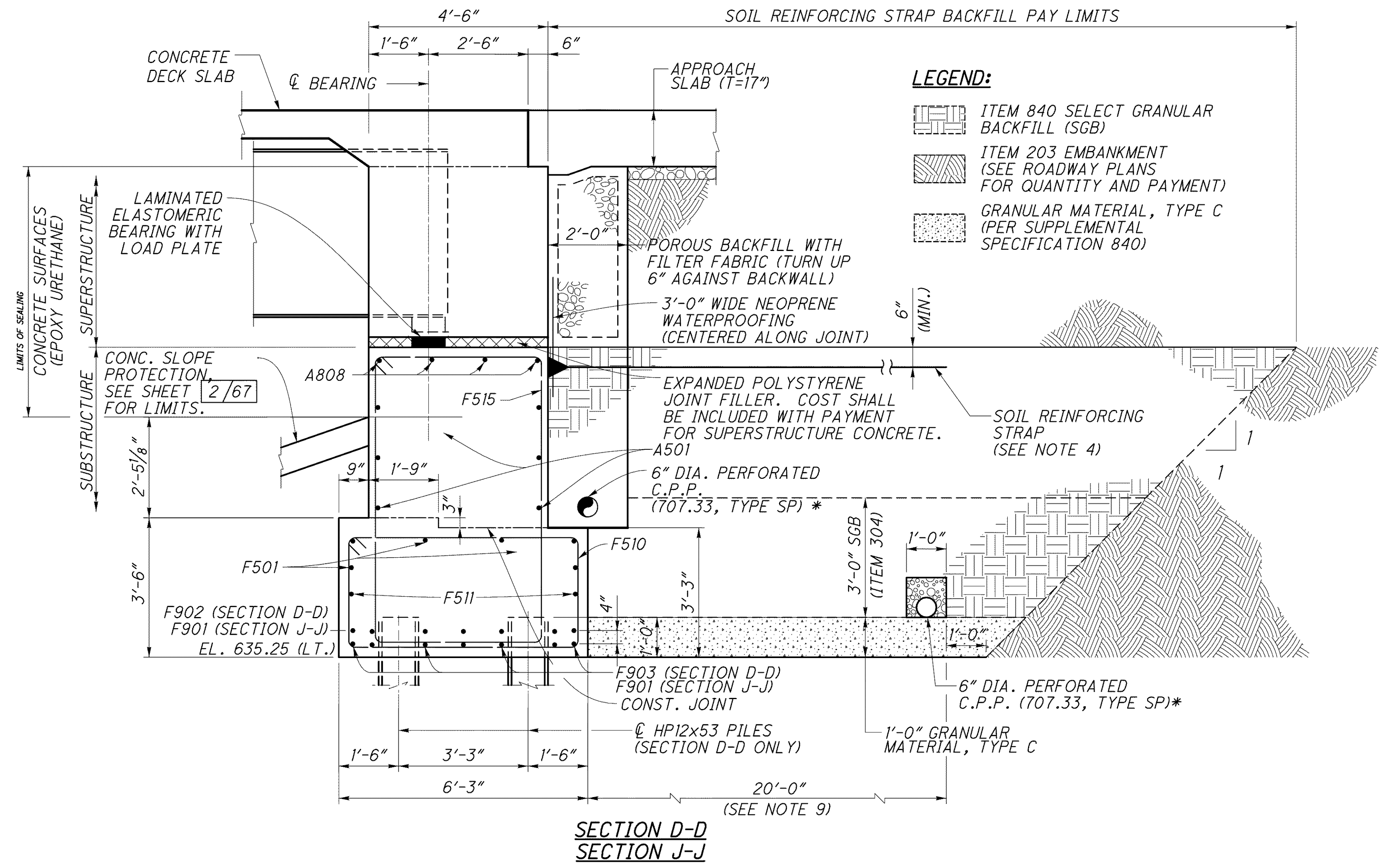
BEARING RETAINER ANCHOR PLAN
 (REAR ABUTMENT - RIGHT STRUCTURE AND FORWARD ABUTMENT - LEFT STRUCTURE FASCIA GIRDER SHOWN. REAR ABUTMENT - LEFT STRUCTURE AND FORWARD ABUTMENT - RIGHT STRUCTURE SIMILAR)

LEGEND

- * MINIMUM SLOPE OF PIPE IS 1/8 IN./FT.
- ** PROVIDE SEISMIC SIDE RETAINERS ON BOTH SIDES OF BEARINGS AT GIRDERS 2, 3, & 4 (LEFT STRUCTURE) AND GIRDERS 7, 8, & 9 (RIGHT STRUCTURE). COST SHALL BE INCLUDED WITH BEARINGS FOR PAYMENT.
- *** PROVIDE BEARING RETAINERS ON ACUTE ANGLE SIDE OF BEARINGS AT GIRDERS 1, C, D, & 5 (LEFT STRUCTURE) AND GIRDERS 6, L, M, & 10 (RIGHT STRUCTURE). COST SHALL BE INCLUDED WITH BEARINGS FOR PAYMENT.

NOTES

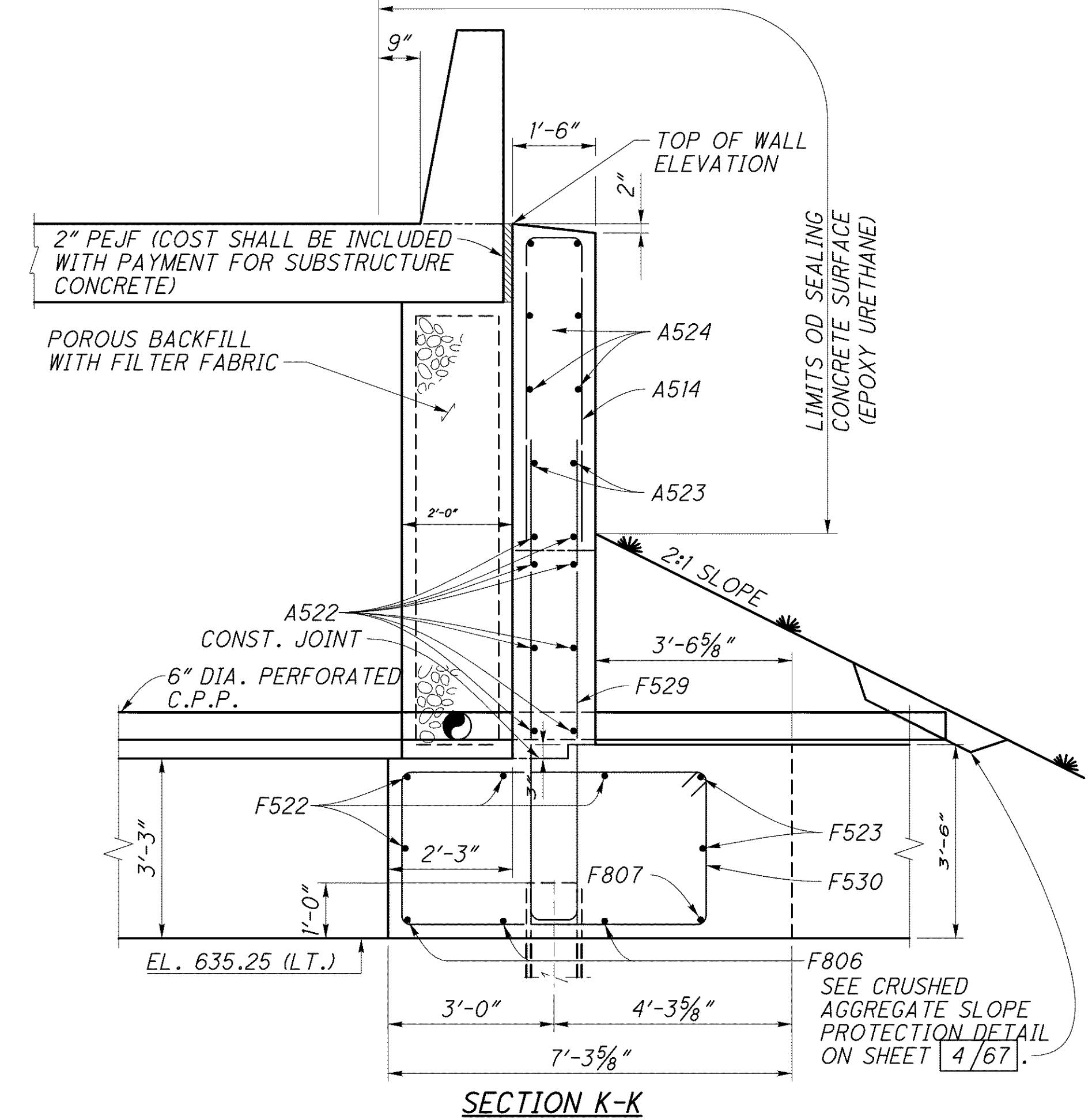
1. ADJUST REINFORCING STEEL IN THE VICINITY OF THE BRIDGE SEAT AS REQUIRED TO AVOID INTERFERENCE WITH THE DRILLING OF BEARING RETAINER OR SEISMIC RETAINER ANCHOR HOLES OR THE PRE-SETTING OF BEARING RETAINER OR SEISMIC RETAINER ANCHORS.
2. 1/2" DIAMETERx12" LONG ANCHOR BOLTS WITH NUT AND 4"x4"x1/2" SQUARE PLATE WASHER WITH 1 3/4" DIAMETER HOLES, TO BE FIELD DRILLED AND GROUTED WITH AN EPOXY NON-SHRINKING GROUT, 705.20, IN 1 3/4"x10" DEEP HOLES.
3. FOR ADDITIONAL ABUTMENT RETAINER DETAILS, SEE O.D.O.T. STANDARD DRAWINGS SICD-1-96.
4. LIMITS OF STRAPS AND SELECT GRANULAR BACKFILL SHALL EXTEND FOR THE FULL LENGTH OF ABUTMENT SEAT. THE CONTRACTOR WITH VENDOR'S APPROVAL SHALL ADJUST STRAPS AS REQUIRED TO MISS DRAIN PIPE. FOR ADDITIONAL DESIGN REQUIREMENTS SEE PROPRIETARY SOIL REINFORCING STRAPS FOR ABUTMENTS GENERAL NOTE ON SHEET [5/67] AND SUPPLEMENTAL SPECIFICATION 840.
5. POROUS BACKFILL WITH FILTER FABRIC 2 FEET THICK SHALL EXTEND UP TO THE PLANE OF THE SUBGRADE TO 1 FOOT BELOW THE EMBANKMENT SURFACE, AND Laterally TO THE ENDS OF THE WING WALLS.
6. FOR ADDITIONAL NEOPRENE SHEETING NOTES AND DETAILS, SEE O.D.O.T. STANDARD DRAWINGS SICD-1-96.
7. FOR LOCATION OF SECTIONS D-D, J-J, AND K-K, SEE SHEETS [18/67] THUR [22/67].
8. FOR LIST OF ABBREVIATIONS, SEE SHEET [4/67].
9. ESTIMATED QUANTITIES FOR SOIL REINFORCING STRAP BACKFILL MATERIAL AND DRAINAGE PIPE LOCATIONS ARE BASED ON AN ASSUMED 20'-0" SOIL REINFORCING STRAP LENGTH. THE MINIMUM STRAP LENGTH SHALL BE 10'-0" TO ALLOW FOR PLACEMENT OF BACK DRAIN PIPE. THE ACTUAL QUANTITIES SHALL BE BASED ON INTERNAL STABILITY CALCULATION PERFORMED BY THE PROPRIETARY SOIL REINFORCING STRAP SUPPLIER. FOR EXCAVATION LIMITS, SEE SHEET [4/67].



SECTION D-D
SECTION J-J

LEGEND:

- ITEM 840 SELECT GRANULAR BACKFILL (SGB)
- ITEM 203 EMBANKMENT (SEE ROADWAY PLANS FOR QUANTITY AND PAYMENT)
- GRANULAR MATERIAL, TYPE C (PER SUPPLEMENTAL SPECIFICATION 840)



SECTION K-K