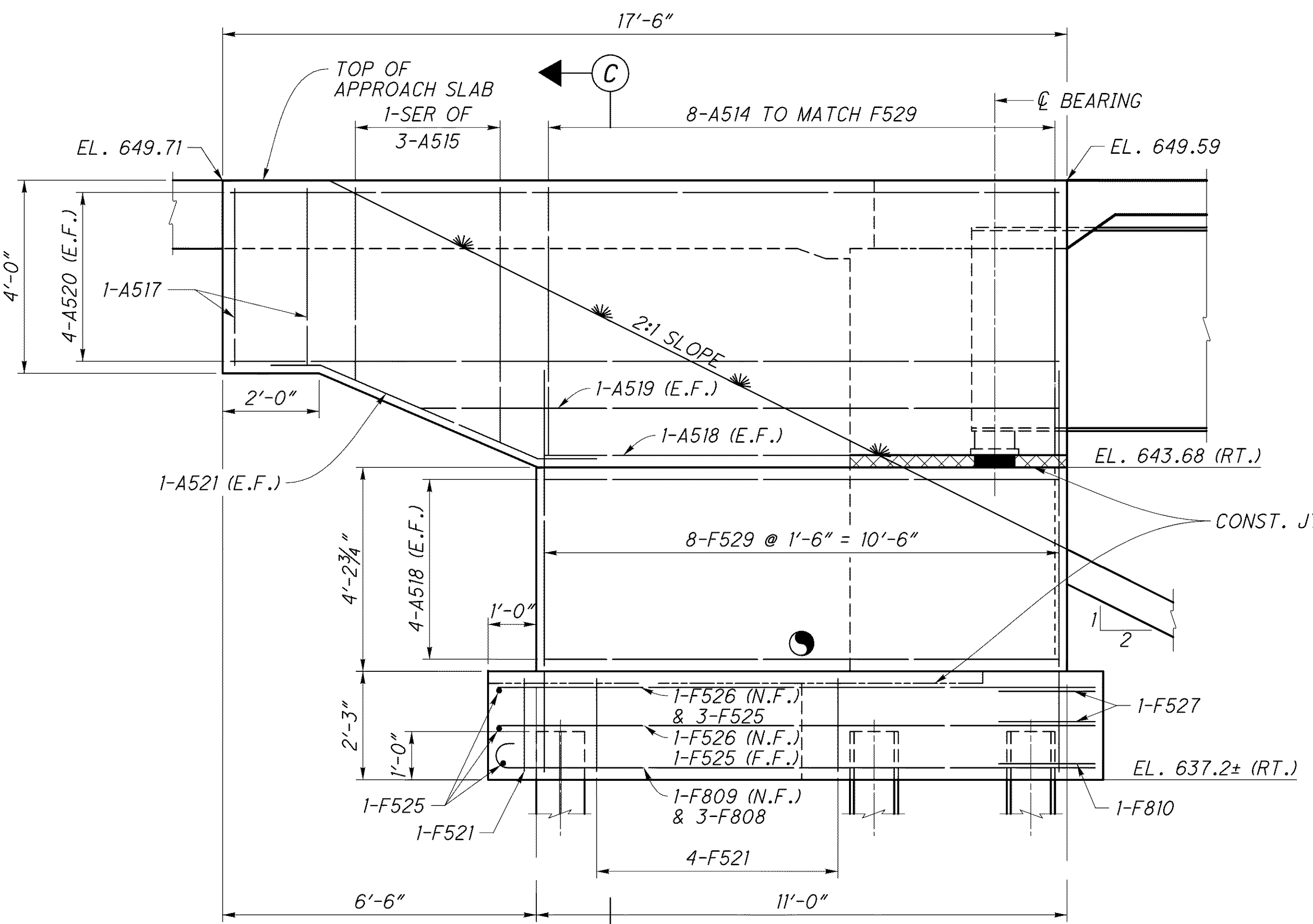
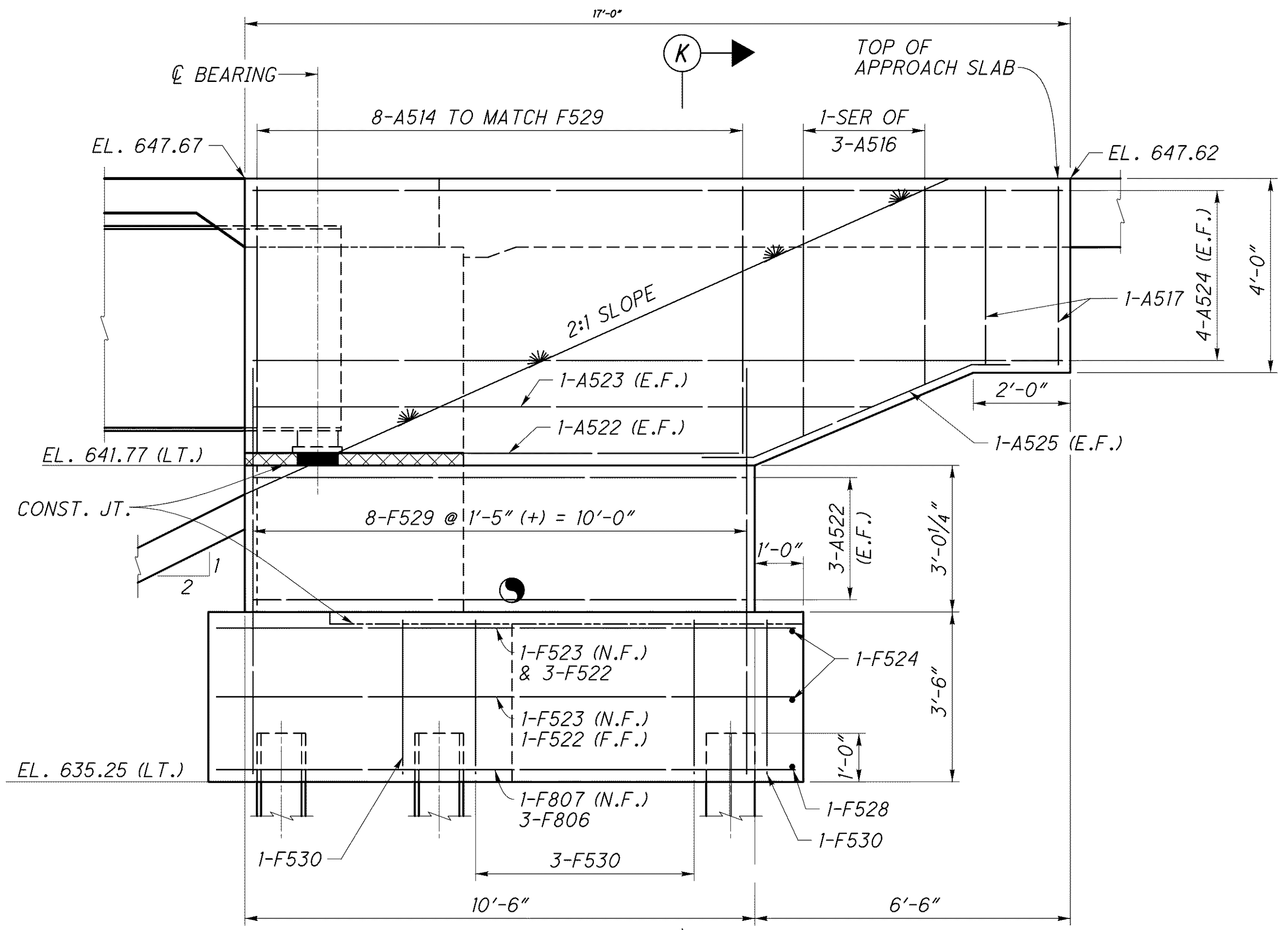


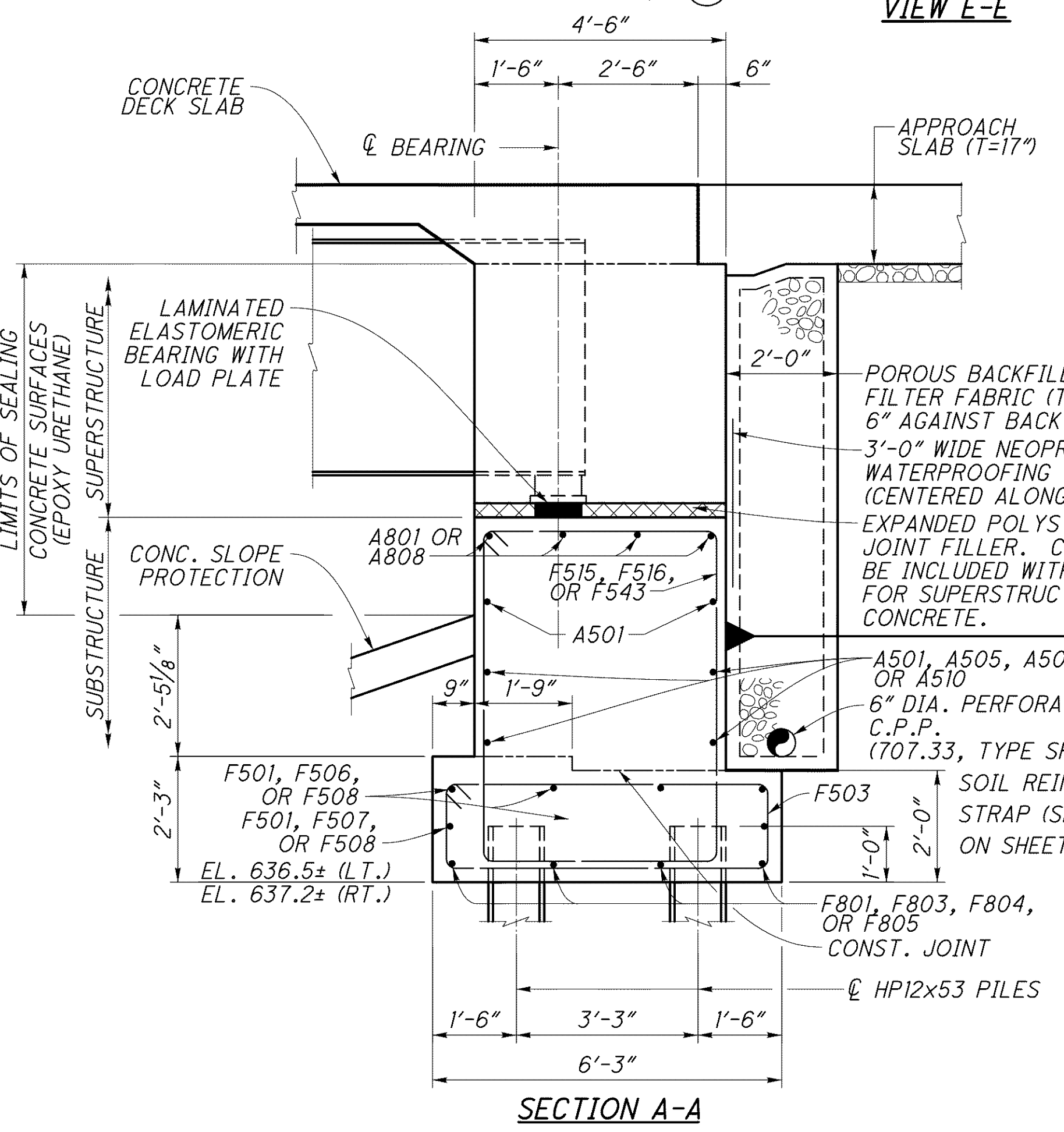
j:\LAK\13486\bridge\LAK002_0400C\sheets\02_0400CAR005.dgn 03-JUL-2008 1:41PM lintn



VIEW E-E

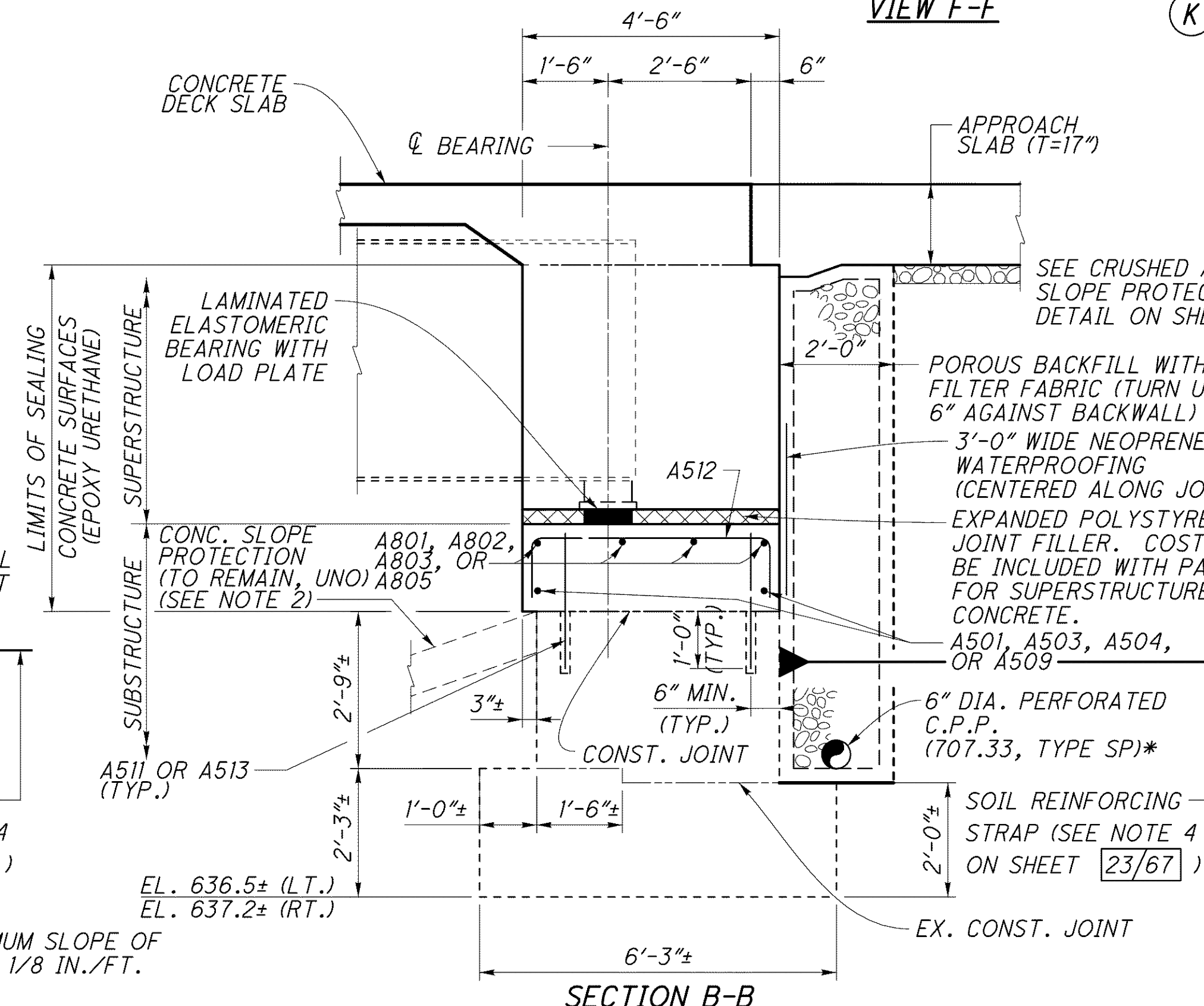


VIEW F-F

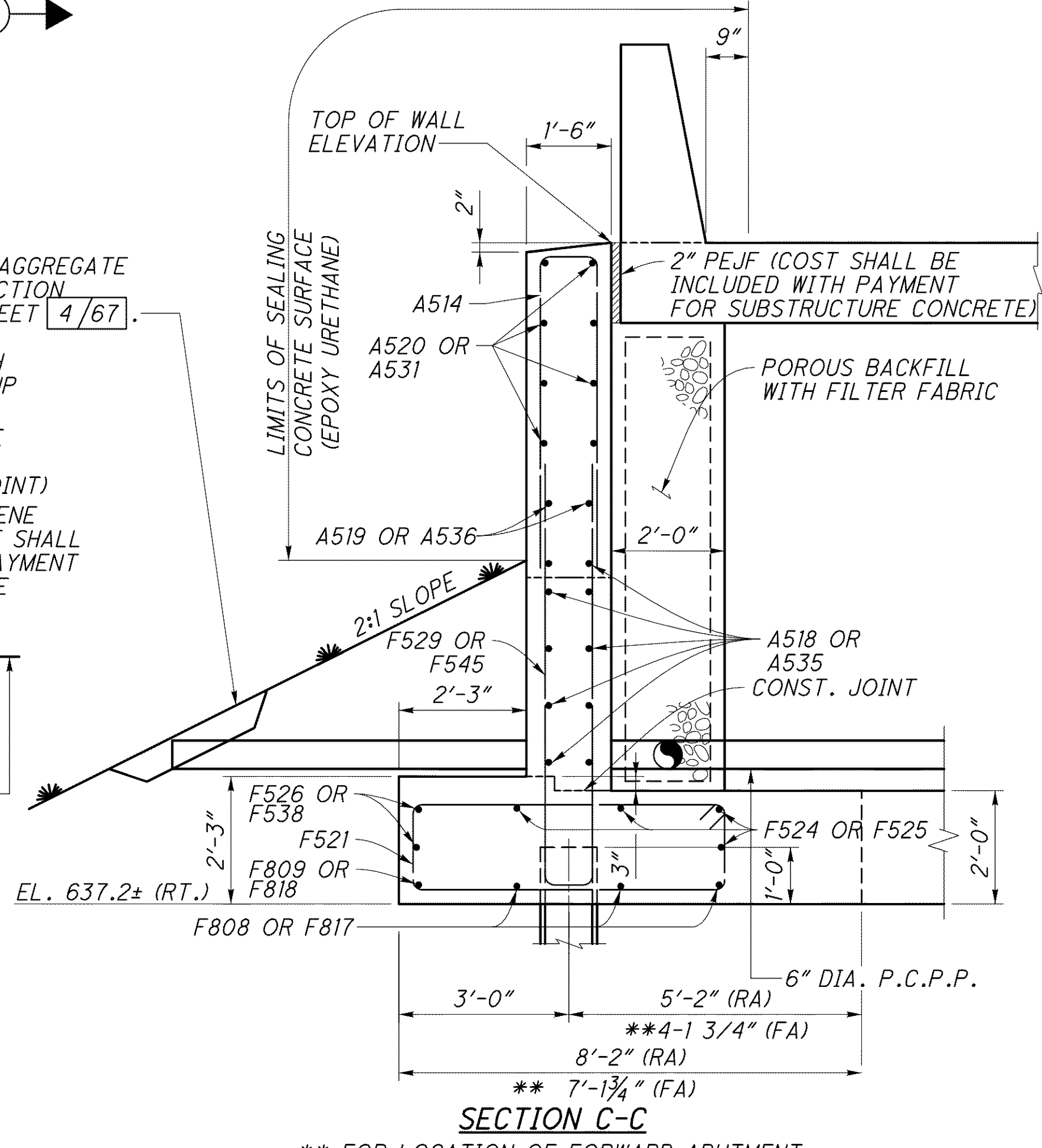


SECTION A-A

* MINIMUM SLOPE OF PIPE IS 1/8 IN./FT.
NOTES
 1. FOR LOCATION OF SECTIONS A-A, B-B, C-C, AND VIEWS E-E AND F-F, SEE SHEET 18/67 THRU 21/67.
 2. FOR LIMITS OF EXISTING CONCRETE SLOPE PROTECTION REMOVAL AND REPLACEMENT, SEE SHEET 2/67.
 3. FOR LIST OF ABBREVIATIONS, SEE SHEET 4/67.
 4. FOR ADDITIONAL ABUTMENT FOOTING REINFORCING DETAILS, SEE SHEET 29/67.
 5. FOR SOIL REINFORCING STRAP AND BACKFILL MATERIAL, SEE SECTION D-D ON SHEET 23/67.



SECTION B-B



SECTION C-C

** FOR LOCATION OF FORWARD ABUTMENT SECTION, SEE SHEETS 24/67 & 28/67.

DESIGN AGENCY: PARSONS BRINCKERHOFF QUADE & DOUGLAS, INC. 614 W. SUPERIOR AVE., SUITE 400 CLEVELAND, OHIO 44115

DATE: 6-19-08
 REVISIONS: RJO
 DRAWN: DCP
 CHECKED: JOZ
 DESIGNED: ZM
 STRUCTURE FILE NUMBER: 4300572(L) 4300602(R)

REAR ABUTMENT WINGWALL DETAILS
 BRIDGE NO. LAK-2-0400 L&R
 STATE ROUTE 2 OVER VINE STREET

LAK-2-3.32
 PID No. 13486

22/67
 1347
 1679