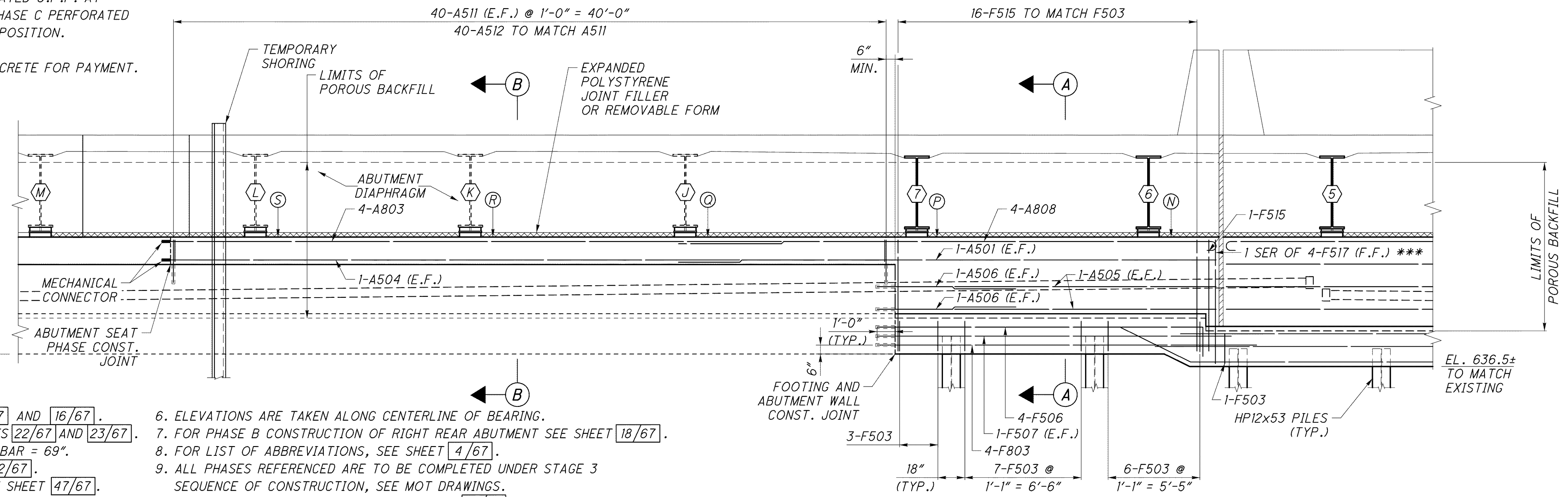


**LEGEND**

- \* MINIMUM SLOPE OF PIPE IS 1/8 IN./FT.
- \*\* PLACE TEMPORARY END CAP ON PERFORATED C.P.P. AT PHASE B CONSTRUCTION JOINT UNTIL PHASE C PERFORATED C.P.P. CAN BE ATTACHED IN ITS FINAL POSITION.
- \*\*\* BARS TO BE FANNED.
- # COST INCLUDED WITH SUBSTRUCTURE CONCRETE FOR PAYMENT.

ELEVATION TABLE	
N	643.93
P	644.12
Q	644.02
R	644.16
S	644.26

- NOTES**
1. FOR REMOVAL DETAILS SEE SHEETS 14/67 AND 16/67.
  2. FOR REAR ABUTMENT DETAILS SEE SHEETS 22/67 AND 23/67.
  3. MINIMUM BAR LAPS: #5 BAR = 36", #8 BAR = 69".
  4. FOR SECTION A-A AND B-B SEE SHEET 22/67.
  5. FOR ABUTMENT DIAPHRAGM DETAILS, SEE SHEET 47/67.
  6. ELEVATIONS ARE TAKEN ALONG CENTERLINE OF BEARING.
  7. FOR PHASE B CONSTRUCTION OF RIGHT REAR ABUTMENT SEE SHEET 18/67.
  8. FOR LIST OF ABBREVIATIONS, SEE SHEET 4/67.
  9. ALL PHASES REFERENCED ARE TO BE COMPLETED UNDER STAGE 3 SEQUENCE OF CONSTRUCTION, SEE MOT DRAWINGS.
  10. FOR SOIL REINFORCING LIMITS, SEE SHEET 23/67.



j:\LAK\13486\bridge\LAK002\_0400C\sheets\02\_0400CAR002.dgn 03-JUL-2008 1:40PM lintr