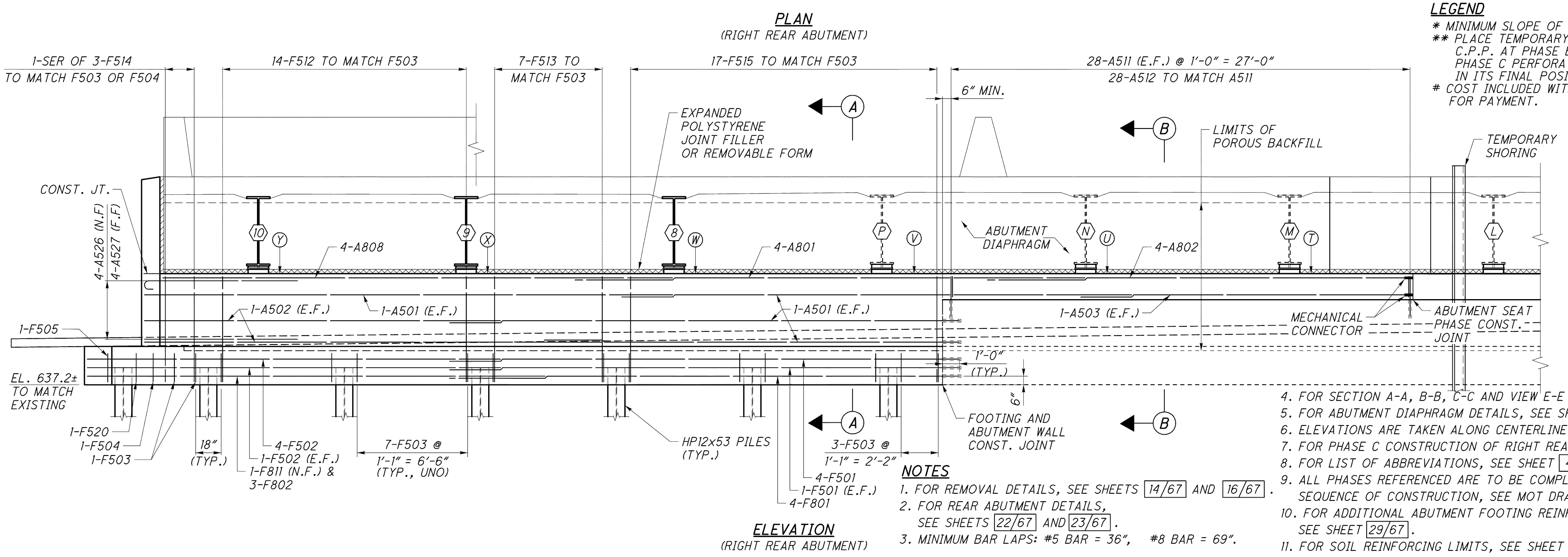
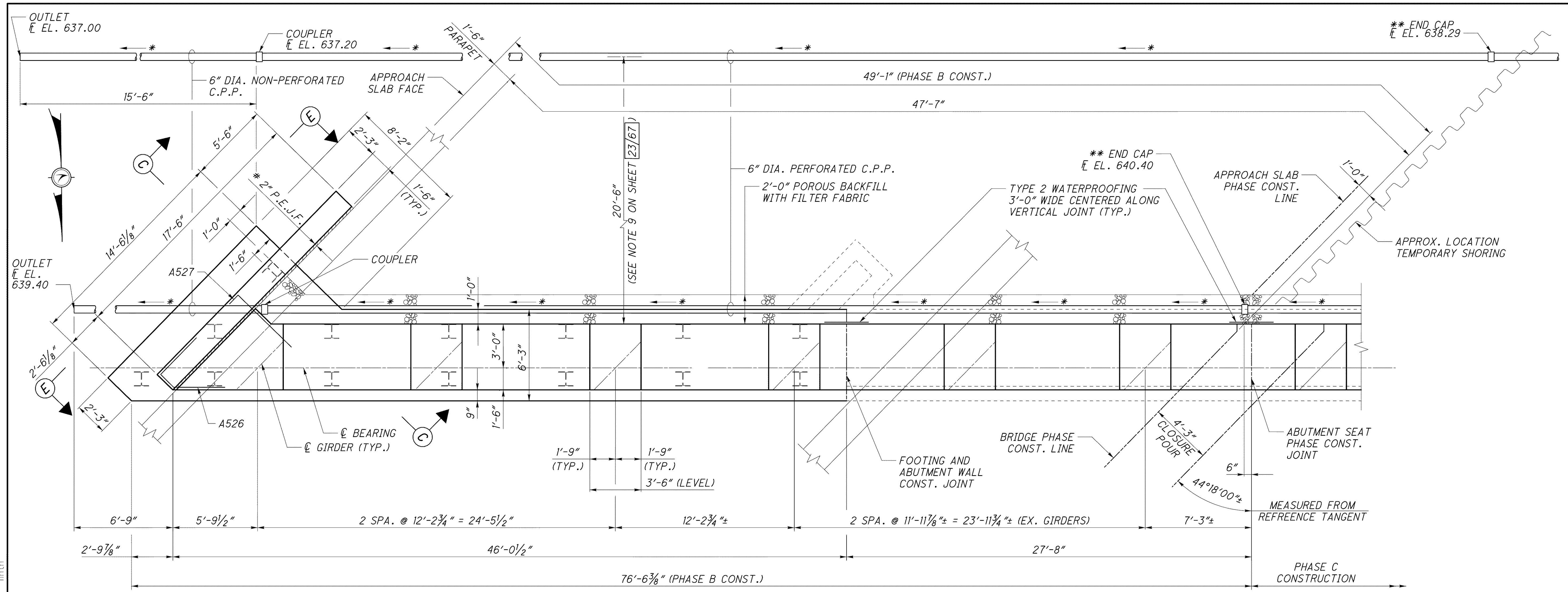


j:\LAK\13486\bridge\LAK002_0400C\sheets\02_0400CAR001.dgn 03-JUL-2008 1:40PM lintn



T	644.14
U	644.10
V	644.00
W	644.08
X	643.88
Y	643.68

- NOTES**
1. FOR REMOVAL DETAILS, SEE SHEETS 14/67 AND 16/67.
 2. FOR REAR ABUTMENT DETAILS, SEE SHEETS 22/67 AND 23/67.
 3. MINIMUM BAR LAPS: #5 BAR = 36", #8 BAR = 69".
 4. FOR SECTION A-A, B-B, C-C AND VIEW E-E SEE SHEET 22/67.
 5. FOR ABUTMENT DIAPHRAGM DETAILS, SEE SHEET 46/67.
 6. ELEVATIONS ARE TAKEN ALONG CENTERLINE OF BEARING.
 7. FOR PHASE C CONSTRUCTION OF RIGHT REAR ABUTMENT, SEE SHEET 19/67.
 8. FOR LIST OF ABBREVIATIONS, SEE SHEET 4/67.
 9. ALL PHASES REFERENCED ARE TO BE COMPLETED UNDER STAGE 3 SEQUENCE OF CONSTRUCTION, SEE MOT DRAWINGS.
 10. FOR ADDITIONAL ABUTMENT FOOTING REINFORCING DETAILS, SEE SHEET 29/67.
 11. FOR SOIL REINFORCING LIMITS, SEE SHEET 23/67.

- LEGEND**
- * MINIMUM SLOPE OF PIPE IS 1/8 IN./FT.
 - ** PLACE TEMPORARY END CAP ON PERFORATED C.P.P. AT PHASE B CONSTRUCTION JOINT UNTIL PHASE C PERFORATED C.P.P. CAN BE ATTACHED IN ITS FINAL POSITION.
 - # COST INCLUDED WITH SUBSTRUCTURE CONCRETE FOR PAYMENT.

DESIGN AGENCY: PARSONS BRINCKERHOFF OUADE & DOUGLAS, INC. 614 W. SUPERIOR AVE., SUITE 400 CLEVELAND, OHIO 44113

DATE: 6-19-08

REVIEWED: RJO

STRUCTURE FILE NUMBER: 4300572(L) 4300602(R)

DESIGNED: ZM

CHECKED: JOZ

REAR ABUTMENT PLAN & ELEVATION I

BRIDGE NO. LAK-2-0400 L&R

STATE ROUTE 2 OVER VINE STREET

LAK-2-3.32

PID No. 13486

18/67

1343

1679