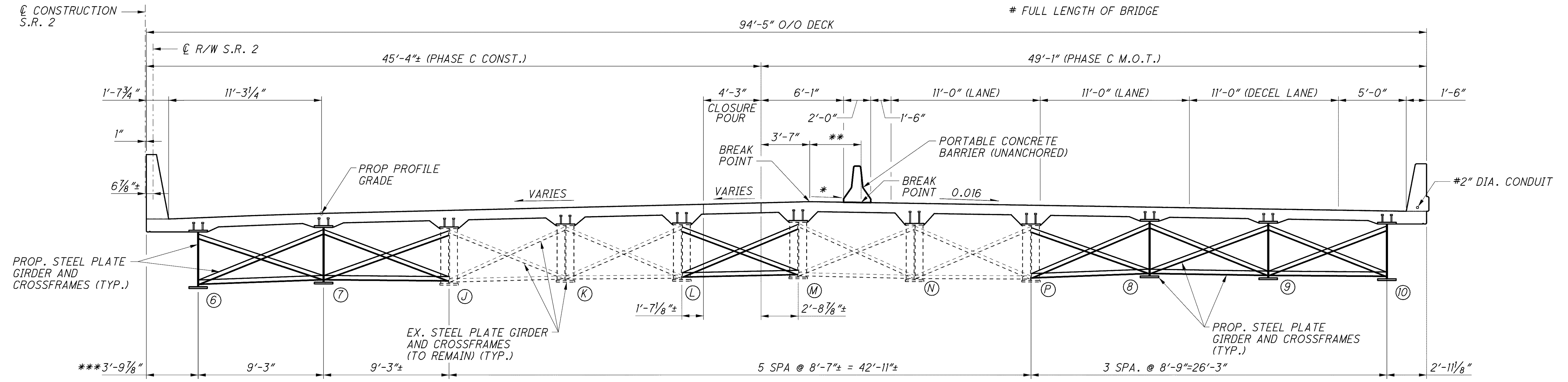


PHASE C REMOVAL

PHASE C MAINTENANCE OF TRAFFIC

(RIGHT STRUCTURE)

- * VARIES FROM 0.014 AT STA. 311+03.03 TO 0.016 AT STA. 311+06.68
- ** VARIES FROM 0'-0" AT STA. 311+03.03 TO 3'-8 7/8" AT 311+06.68
- *** VARIES FROM 3'-10 3/8" AT STA. 310+56.86 TO 3'-9 7/8" AT 310+79.71
- # FULL LENGTH OF BRIDGE



PHASE C CONSTRUCTION

PHASE C MAINTENANCE OF TRAFFIC

(RIGHT STRUCTURE)

PHASE C BRIDGE CONSTRUCTION (RIGHT BRIDGE)

1. REMOVE EXISTING MEDIAN SECTION OF DECK AND PARAPET.
2. REMOVE PORTION OF ABUTMENT AND APPROACH SLAB.
3. REMOVE GIRDER H, AND CROSSFRAMES BETWEEN GIRDERS H AND J.
4. REMOVE PORTION OF PIER CAP AND RE-BUILD.
5. BUILD ABUTMENT AND PIER EXTENSIONS.
6. ERECT GIRDERS 6 AND 7, AND CROSSFRAMES.
7. PLACE ABUTMENT DIAPHRAGMS.
8. PLACE DECK AND PARAPETS.
9. REPLACE REMOVED EXISTING CROSSFRAMES BETWEEN GIRDERS L AND M.
10. PLACE ABUTMENT DIAPHRAGMS AND DECK CLOSURE POUR.
11. SETUP FOR PHASE D MOT.

NOTE

1. FOR LIST OF ABBREVIATIONS, SEE SHEET 4/67.
2. ALL PHASES REFERENCED ARE TO BE COMPLETED UNDER STAGE 3 SEQUENCE OF CONSTRUCTION, SEE MOT DRAWINGS.

j:\LAK\13486\bridge\LAK002_0400C\sheets\02_0400CPC005.dgn 03-JUL-2008 1:37PM linth