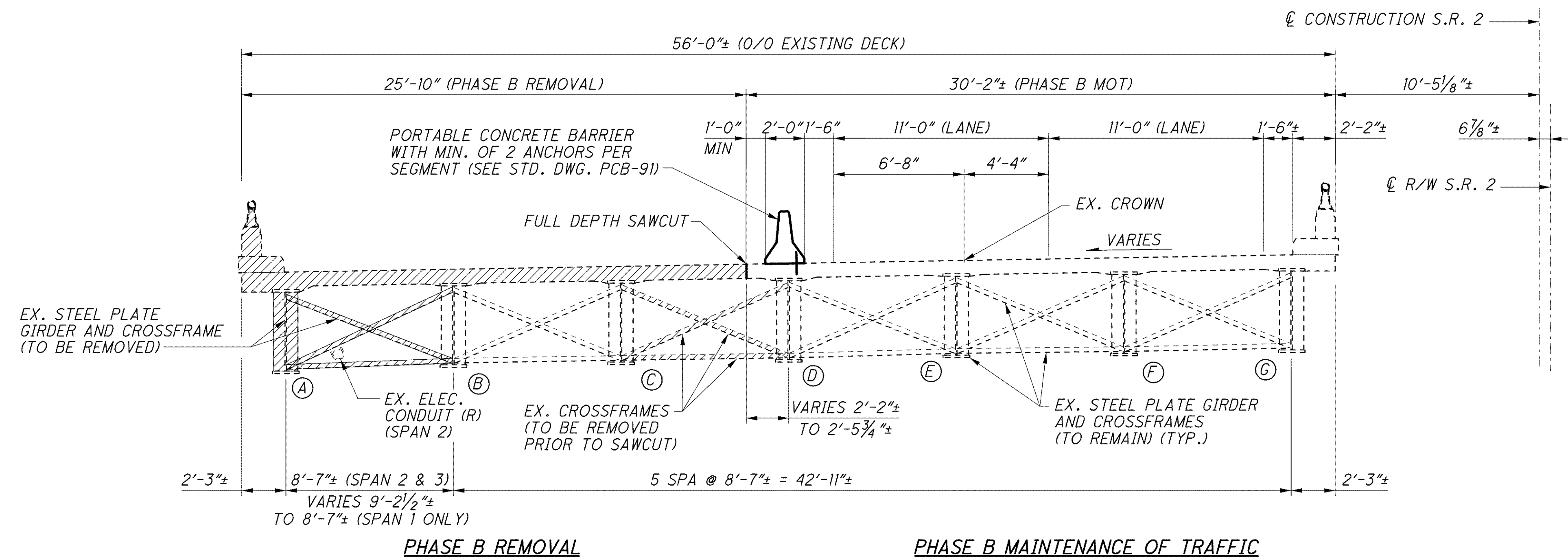


PHASE B BRIDGE CONSTRUCTION (LEFT BRIDGE)

1. SETUP PHASE B MOT.
2. REMOVE EXISTING CROSSFRAMES BETWEEN GIRDERS C AND D.
3. SAW CUT AND REMOVE EXISTING OUTSIDE SECTION OF DECK AND PARAPET.
4. REMOVE GIRDER A, AND CROSSFRAMES BETWEEN GIRDERS A AND B.
5. REMOVE PORTION OF ABUTMENT AND APPROACH SLAB.
6. BUILD ABUTMENT AND PIER EXTENSIONS.
7. ERECT GIRDERS 1 THRU 4 AND CROSSFRAMES.
8. PLACE ABUTMENT DIAPHRAGMS.
9. PLACE DECK AND PARAPETS.
10. SETUP FOR PHASE C MOT.

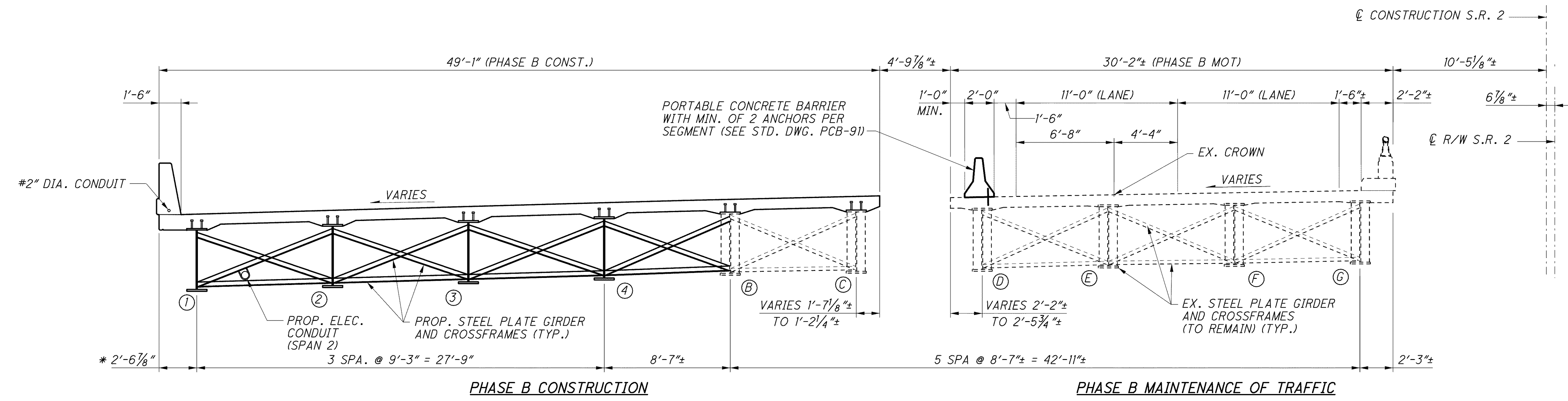


PHASE B MAINTENANCE OF TRAFFIC

(LEFT STRUCTURE)

NOTES

1. PHASE A CONSTRUCTION CONSISTS OF THE ROADWAY MEDIAN SHOULDER RECONSTRUCTION TO EXISTING GRADES
2. FOR LIST OF ABBREVIATIONS, SEE SHEET 4/67.
3. ALL PHASES REFERENCED ARE TO BE COMPLETED UNDER STAGE 3 SEQUENCE OF CONSTRUCTION, SEE MOT DRAWINGS.



PHASE B MAINTENANCE OF TRAFFIC

(LEFT STRUCTURE)

* VARIES FROM 3'-9 3/8" AT STA. 309+61.35 TO 2'-6 7/8" AT STA. 310+79.71
 # FROM STA. 311+31.57 TO END OF BRIDGE

j:\LAK\13486\bridge\LAK002_0400C\sheets\002_0400CPC001.dgn 03-JUL-2008 1:36PM lntn