

BENCHMARK DATA

BM #M015	STA. 309+93.67,	ELEV. 628.99,	343.93' RT.
BM #M016	STA. 318+23.34,	ELEV. 638.04,	79.95' RT.

FOR ADDITIONAL BENCHMARK INFORMATION, SEE ROADWAY PLAN SHEET 281/1679

SOIL BORING LOCATIONS

BORING	STATION	OFFSET
B-201	310+97.53	60.2' RT.
B-202	311+05.06	5.2' LT.
B-203	309+69.24	60.7' LT.
B-204	313+61.44	60.5' RT.
B-205	312+30.36	7.8' RT.
B-206	312+49.29	72.8' LT.

NOTES

- FOR GUARDRAIL POST STATIONS, SEE SHEET 2/67.
- EARTHWORK LIMITS SHOWN ARE APPROXIMATE. ACTUAL SLOPES SHALL CONFORM TO PLAN CROSS SECTIONS.
- FOR LIST OF ABBREVIATIONS SEE SHEET 4/67.

DESIGN TRAFFIC:
 2010 ADT = 68,050 2010 ADTT = 3,400
 2030 ADT = 81,500 2030 ADTT = 4,100
 DIRECTIONAL DISTRIBUTION = 70/30

LEGEND

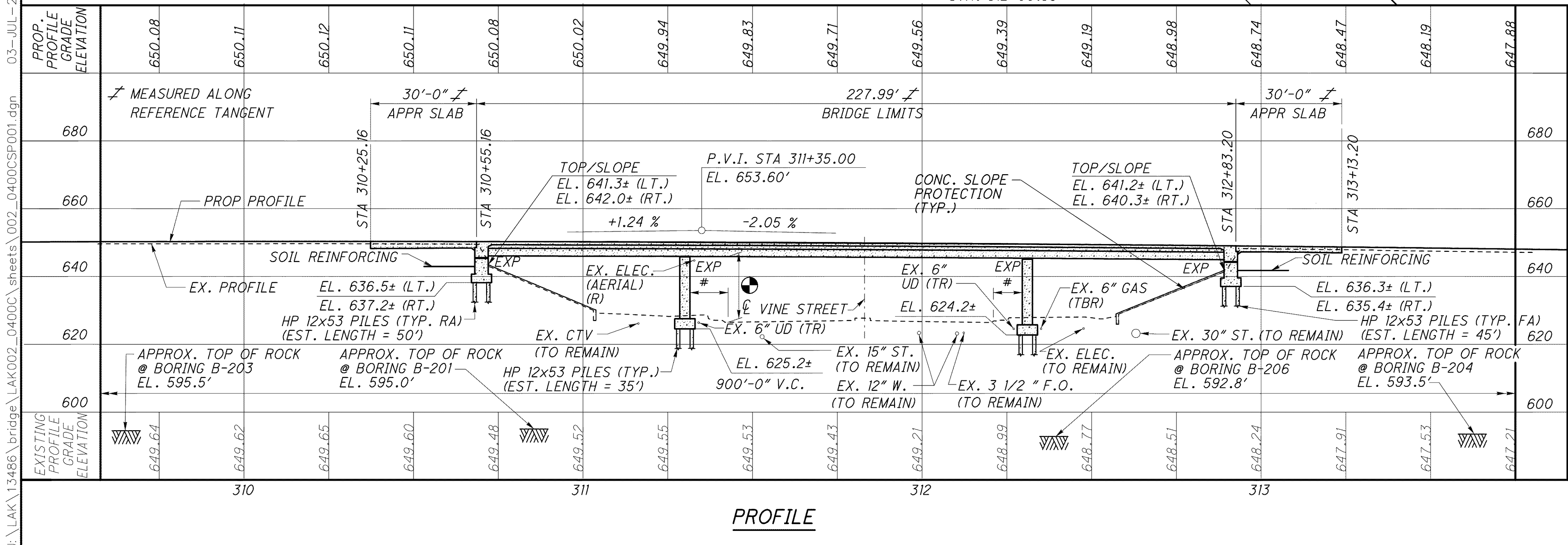
- SOIL BORING LOCATION (B201 TO B206)
- * - STEP 3, PHASE B CONSTRUCTION (49'-1" LT & RT)
- ** - STEP 3, PHASE C CONSTRUCTION (45'-4" LT & RT)
- 14'-0" REQUIRED MINIMUM VERTICAL CLEARANCE
- 15'-2 3/8" LEFT MINIMUM VERTICAL CLEARANCE
- 15'-8 1/2" RIGHT MINIMUM VERTICAL CLEARANCE
- # - 7'-6" REQUIRED MINIMUM HORIZONTAL CLEARANCE
- 8'-5 1/8" LEFT MINIMUM HORIZONTAL CLEARANCE
- 8'-6 1/8" RIGHT MINIMUM HORIZONTAL CLEARANCE
- ## - 10' MEDIAN BARRIER TRANSITION, SEE ROADWAY PLANS

EXISTING STRUCTURES

TYPE: CONTINUOUS STEEL GIRDER WITH REINFORCED CONCRETE DECK AND SUBSTRUCTURE.
 SPANS: 60'-0"±, 101'-0"±, 60'-0"± C/C BEARINGS.
 ROADWAY: 2 @ 54'-0"± F/F PARAPETS
 LOADING: CF=2000(57)
 SKEW: 44°18'± R.F.
 APPROACH SLABS: 25'-0"± LONG (AS-1-81)
 ALIGNMENT: 1"± CURVE LEFT AND TANGENT
 CROWN: VARIES
 WEARING SURFACE: 1"± MONOLITHIC CONCRETE
 STRUCTURAL FILE NUMBER: 4300572(L) / 4300602(R)
 DATE BUILT: 1958

PROPOSED STRUCTURES

TYPE: CONTINUOUS COMPOSITE, ASTM A709, GRADE 50, STEEL GIRDER WITH REINFORCED CONCRETE DECK AND SEMI-INTEGRAL ABUTMENTS
 PROPOSED WORK: ADD NEW CONTINUOUS COMPOSITE, ASTM A709, GRADE 50, STEEL GIRDERS WITH WIDENED REINFORCED CONCRETE DECK, ON WIDENED PIERS AND RECONSTRUCTED SEMI-INTEGRAL ABUTMENTS ON PILES
 SPANS: 60'-0"±, 101'-0"±, 60'-0"± C/C BEARINGS.
 ROADWAY: 91'-3 1/4" (LT. AND RT.) TOE/TOE PARAPET
 LOADING: HS20-44 CASE I AND ALTERNATE MILITARY; FWS= 60psf
 SKEW: 44°18'± R.F.
 APPROACH SLABS: 30'-0" LONG (AS-1-81)
 ALIGNMENT: 1"± CURVE LEFT AND TANGENT
 CROWN: VARIES
 WEARING SURFACE: 1"± MONOLITHIC CONCRETE
 COORDINATES: LATITUDE 41°38'33" N LONGITUDE 81°25'32" W



j:\LAK\13486\bridge\LAK002_0400C\sheets\02_0400CSP01.dgn 03-JUL-2008 1:32PM
 j:\LAK\13486\bridge\LAK002_0400C\sheets\02_0400CSP01.dgn

DESIGN AGENCY: PARSONS BRINCKERHOFF QUADE & DOUGLAS, INC. 614 W. SUPERIOR AVE., SUITE 400 CLEVELAND, OHIO 44115
 DATE: 6-19-08
 DRAWN: NAL
 CHECKED: PWP
 LAK COUNTY: STA. 310+55.16 TO STA. 312+83.20
 SITE PLAN: BRIDGE NO. LAK-2-0400 L&R STATE ROUTE 2 OVER VINE STREET
 LAK-2-3.32
 PID 13486
 1/67
 1327
 1679