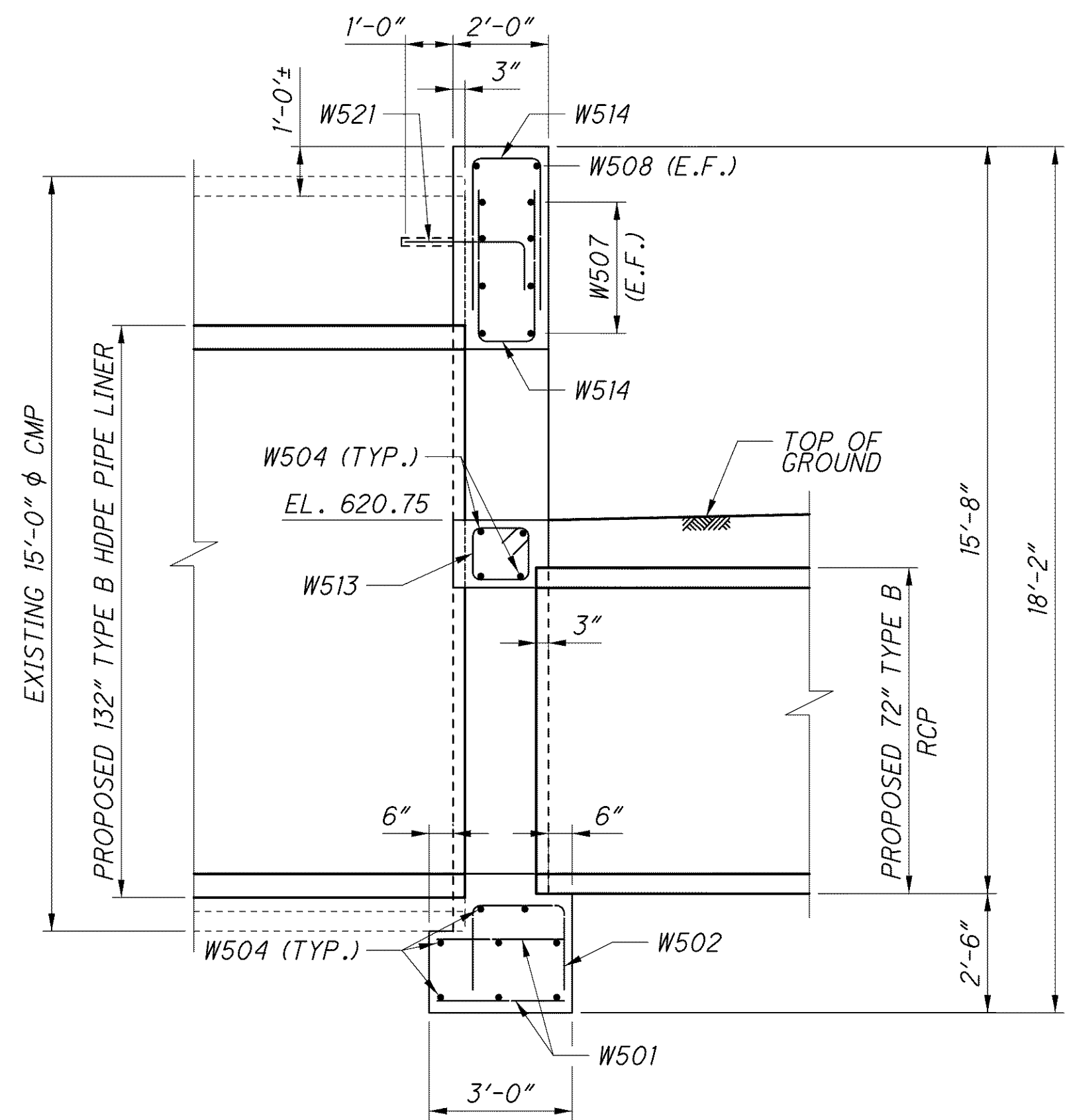
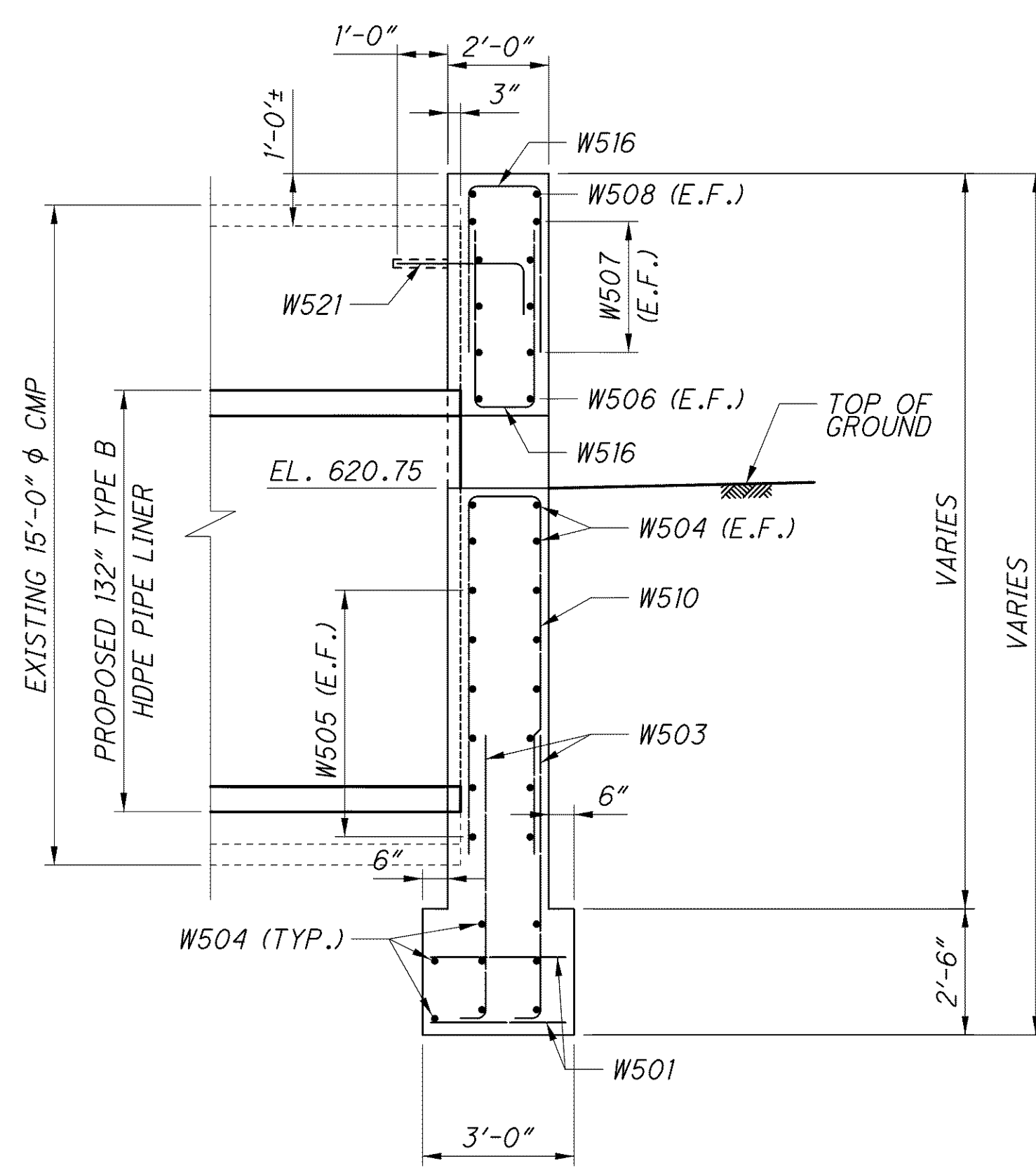


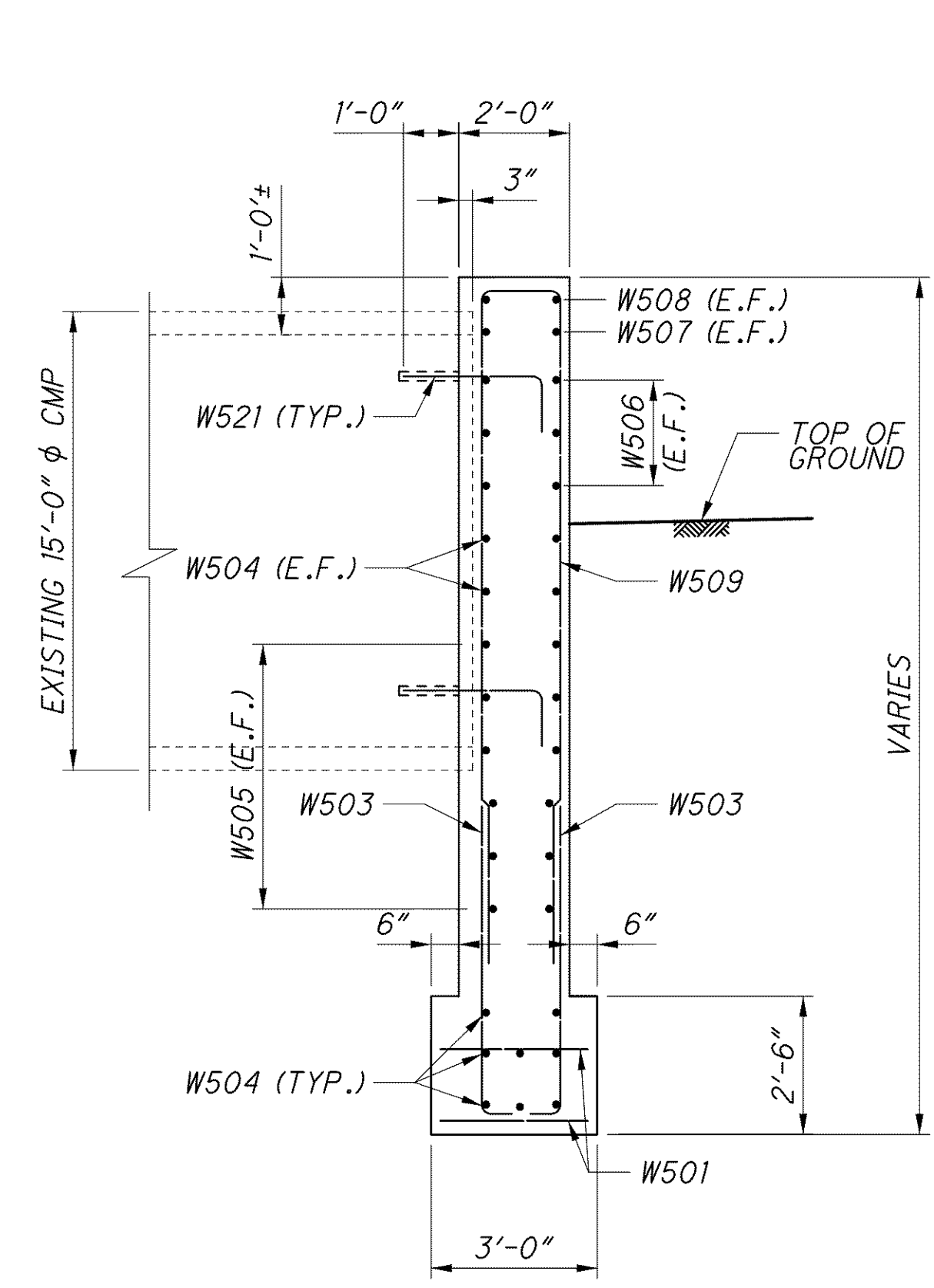
j:\LAK\13486\bridge\LAK002_0395\c\sheets\002_0395cmd007.dgn 03-JUL-2008 1:38PM lintn



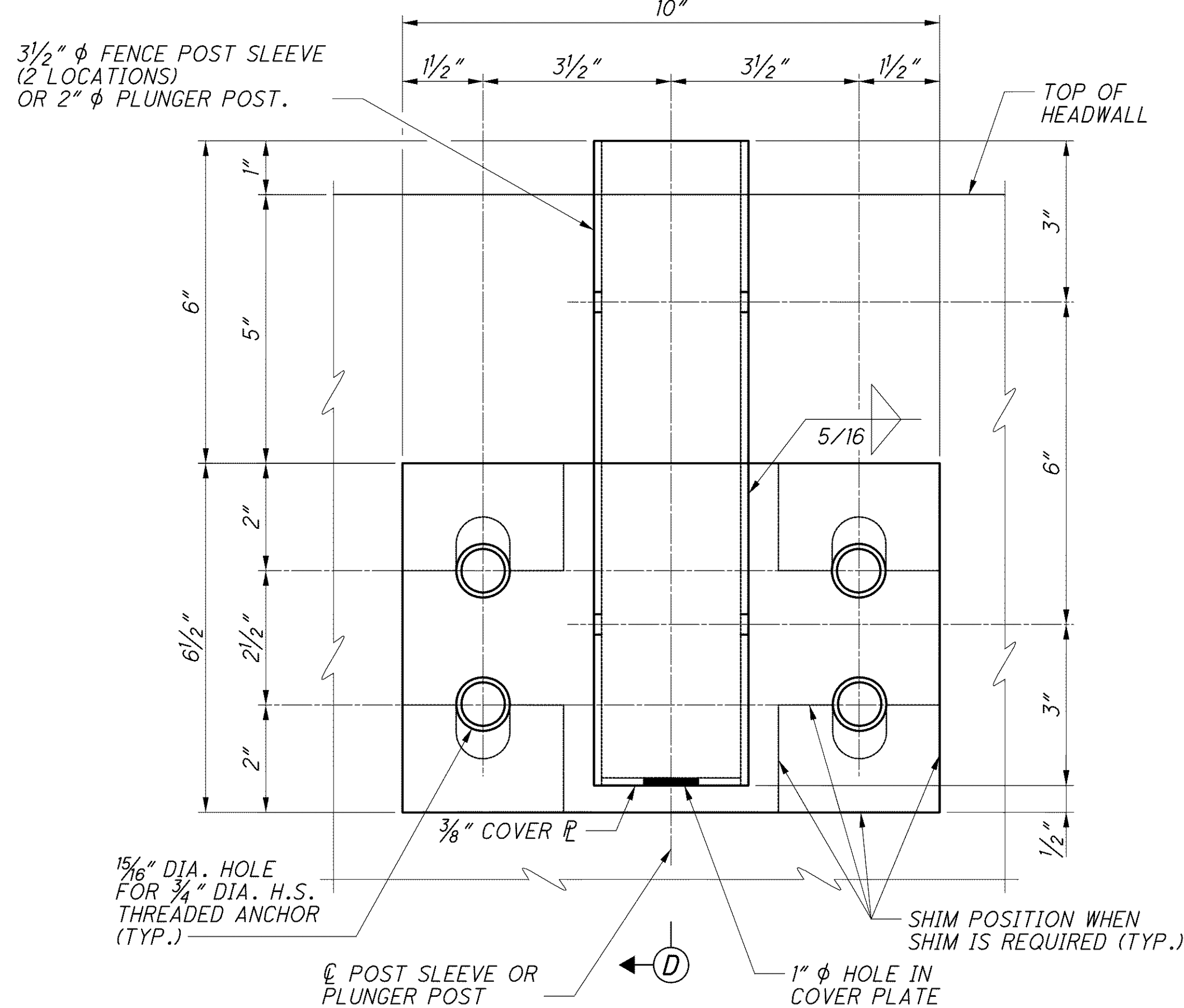
SECTION A-A



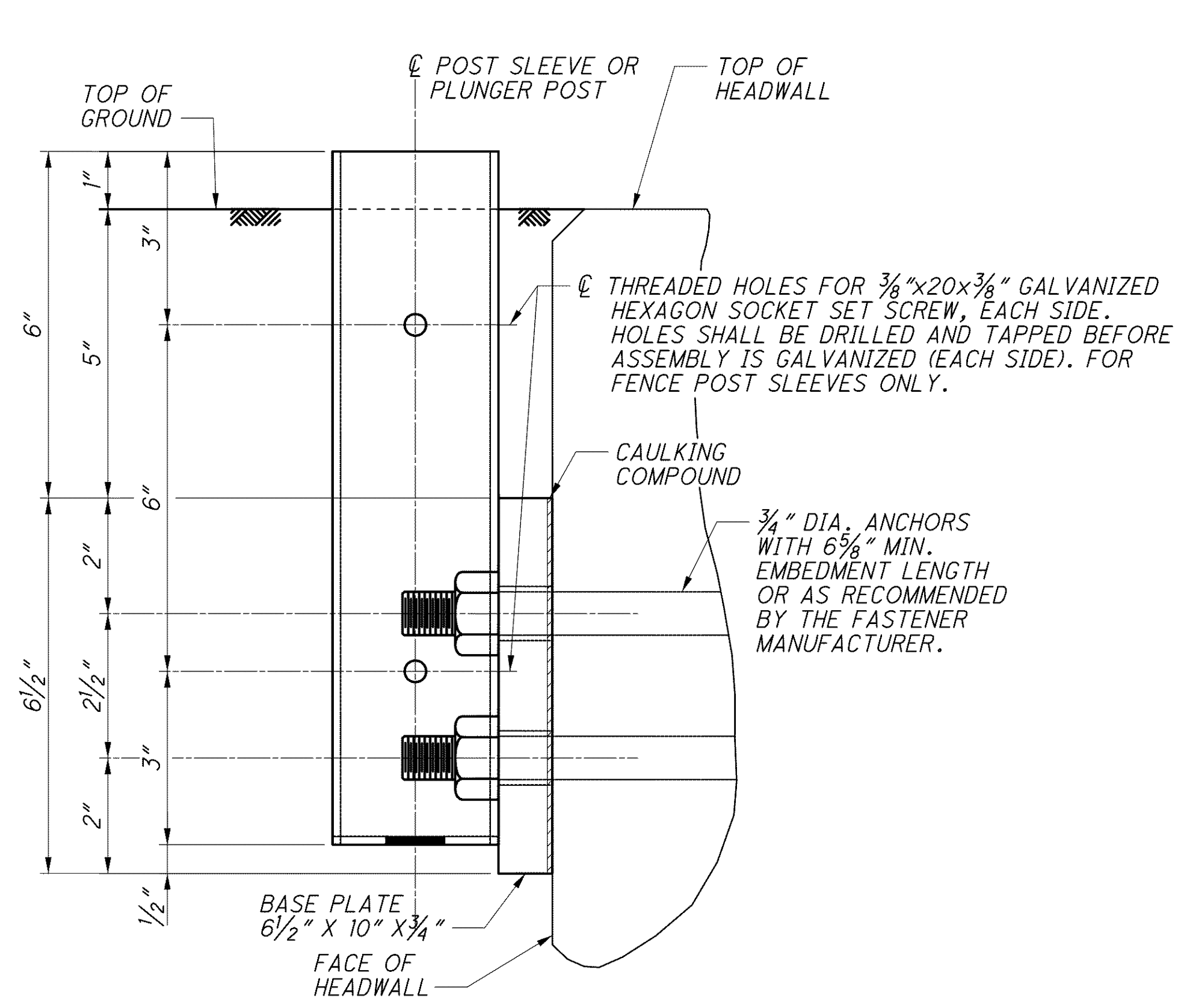
SECTION B-B



SECTION C-C



DETAIL 1



SECTION D-D

- FOR FENCE DETAILS, SEE ODOT STD. DWG. F-1.1.
- BASE PLATES SHALL BE ASTM A709 GRADE 36 OR 50 STEEL GALVANIZED ACCORDING TO 711.02.
- FASTENERS: THE 3/4 INCH DIA. HIGH STRENGTH THREADED ANCHORS, 3/4 INCH DIA. BOLTS, NUTS AND WASHERS SHALL MEET THE REQUIREMENTS OF ASTM A325. ALL HARDWARE SHALL BE GALVANIZED ACCORDING TO 711.02. DOWEL 3/4 INCH DIA. THREADED ANCHORS AT LEAST 6 5/8 INCHES INTO CONCRETE. ANCHORS SHALL PROJECT AT LEAST 2 3/4 INCHES IN FRONT OF THE HEADWALL. HOLE DIAMETERS SHALL BE 1/8 INCH LARGER THAN THE ANCHORS OR AS RECOMMENDED BY THE MANUFACTURER. PLACE AND CURE ANCHORS ACCORDING TO CMS 510 USING NONSHRINK, NONMETALLIC GROUT, 705.20.

THE ANCHORS MAY BE CAST-IN-PLACE WITH A MINIMUM 6 5/8 INCH EMBEDMENT LENGTH.
- FILLET WELDS SHALL CONFORM TO CMS 513.
- POST SLEEVES SHALL BE 3.500 INCH OUTSIDE DIAMETER PIPE, ASTM A53, 25,000 PSI MINIMUM YIELD STRENGTH, 7.58 LB/FT, GALVANIZED ACCORDING TO 711.02. HEXAGON SOCKET SET SCREWS SHALL BE SAE 4140 ALLOY STEEL, HEAT TREATED, WITH FLAT OR OVAL POINT.
- PLUNGER POST SHALL BE 2.000 INCH OUTSIDE DIAMETER PIPE, ASTM A53, 25,000 PSI MINIMUM YIELD STRENGTH, 7.58 LB/FT, GALVANIZED ACCORDING TO 711.02.
- SHIM PLATES SHALL BE MADE FROM ANY MULTI-POLYMER PLASTIC WITH A MINIMUM COMPRESSIVE STRENGTH OF 5,000 PSI. IN ORDER TO INSTALL POSTS PLUMB, SLEEVES MAY BE CUT ON A BIAS.
- CAULKING COMPOUND SHALL CONFORM TO FEDERAL SPECIFICATION TT-S-00230C TYPE II, CLASS A, ALUMINUM GRAY. WHEN APPLYING THE CAULK TO THE BASE PLATE, PROVIDE A 1 INCH OPENING THROUGH THE CAULKING ON LOW SIDE OF BASE PLATE.
- CONSTRUCTION PROCEDURE:
 - FIELD VERIFY THE PLAN LOCATIONS OF ALL BASE PLATES AND MARK HEADWALL ACCORDINGLY.
 - MARK AND DRILL HOLES FOR THE 3/4 INCH HIGH STRENGTH THREADED ANCHORS, 3/4 INCH BOLTS OR APPROVED 3/4 INCH INSERTS USING A BASE PLATE OR TEMPLATE.
 - INSTALL 3/4 INCH DIAMETER HIGH STRENGTH THREADED ANCHORS, 3/4 INCH BOLTS OR APPROVED 3/4 INCH INSERTS.
 - INSTALL POSTS AND BASE PLATES AND SHIM WHERE REQUIRED.
 - CAULK EDGES OF BASE PLATES, SHIMS AND SLEEVES.
 - COMPLETE INSTALLATION OF FENCE.
- THE COST FOR POST SLEEVES, GATE PLUNGER POST, ANCHORS, BASE PLATE, CAULK, AND ALL OTHER ITEMS NECESSARY TO CONSTRUCT GATE SHALL BE INCLUDED WITH ITEM 607, GATE, TYPE CL, AS PER PLAN FOR PAYMENT.
- FOR LIST OF ABBREVIATION, SEE SHEET [2 / 11].