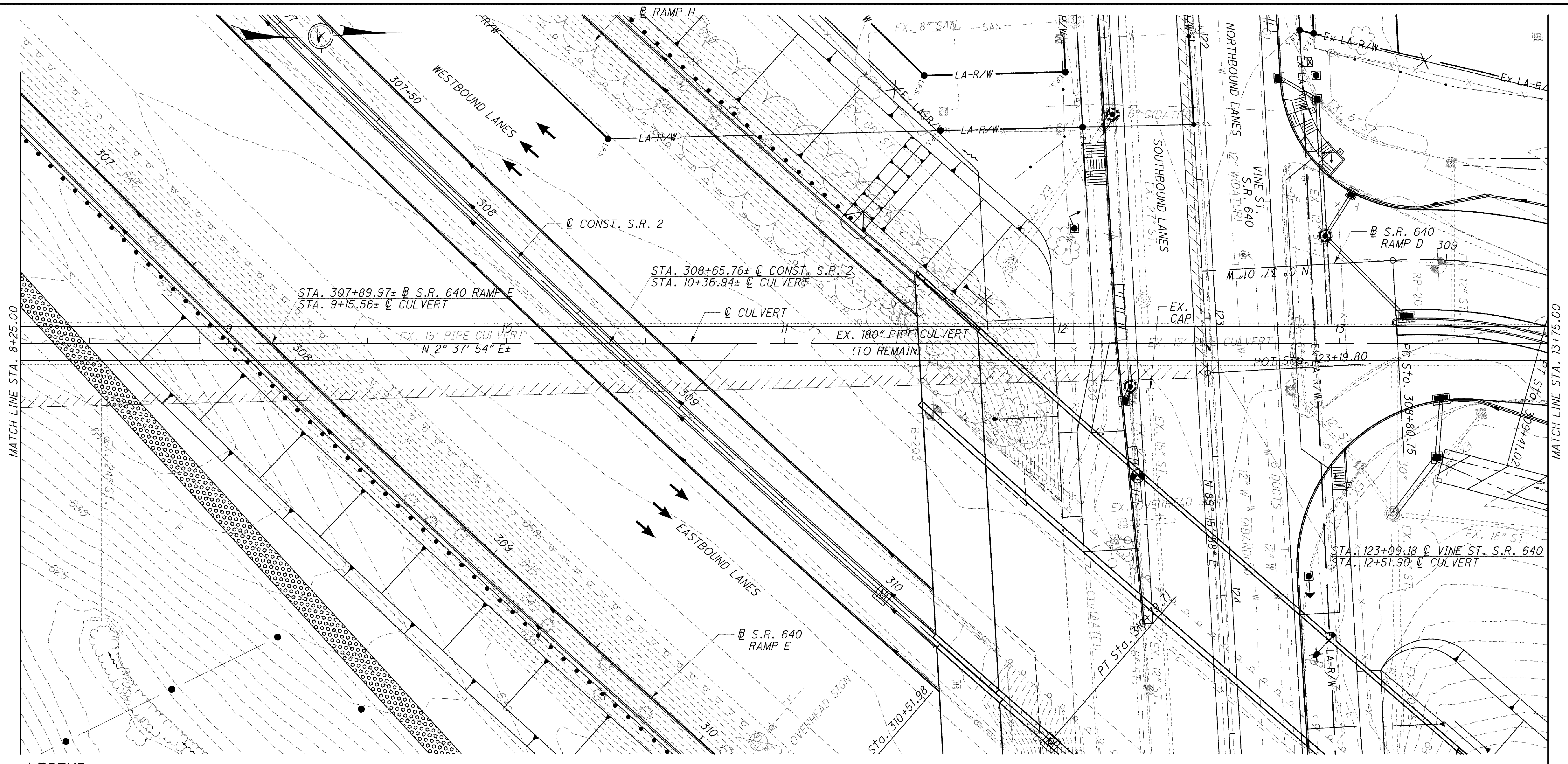


j:\LAK\13486\bridge\LAK002_0395\02_0395cmd002.dgn 03-JUL-2008 1:35PM lintn

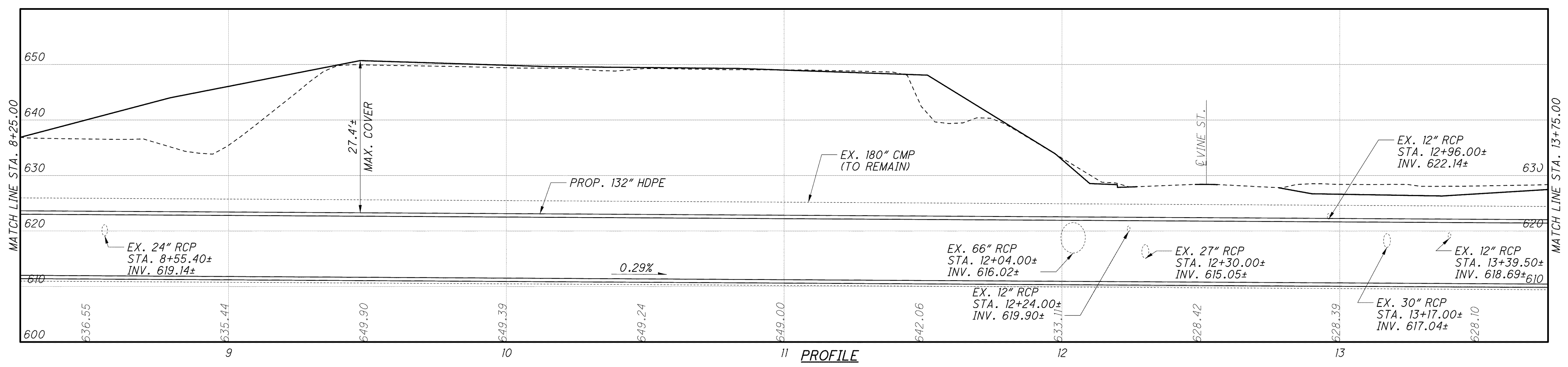


LEGEND

ORIGINAL SOIL BORING LOCATION

NOTE: FOR ABBREVIATION LIST, SEE SHEET 2/11

PLAN



PROFILE

<p>DESIGN AGENCY PARSONS BRINCKERHOFF OMAHA & DOUGLAS, INC. 614 W. SUPERIOR AVE., SUITE 400 CLEVELAND, OHIO 44113</p>	DATE	6-19-08	
	REVIEWED	RJO	STRUCTURE FILE NUMBER 4300548
DESIGNED	PWP	CHECKED	BMG
<p>CULVERT PLAN & PROFILE BRIDGE NO. LAK-2-0395 STATE ROUTE 2 OVER TRIBUTARY OF CHAGRIN RIVER</p>			
<p>LAK-2-3.32 PID No. 13486</p>			
<p>6 / 11</p>			
<p>1321 1679</p>			