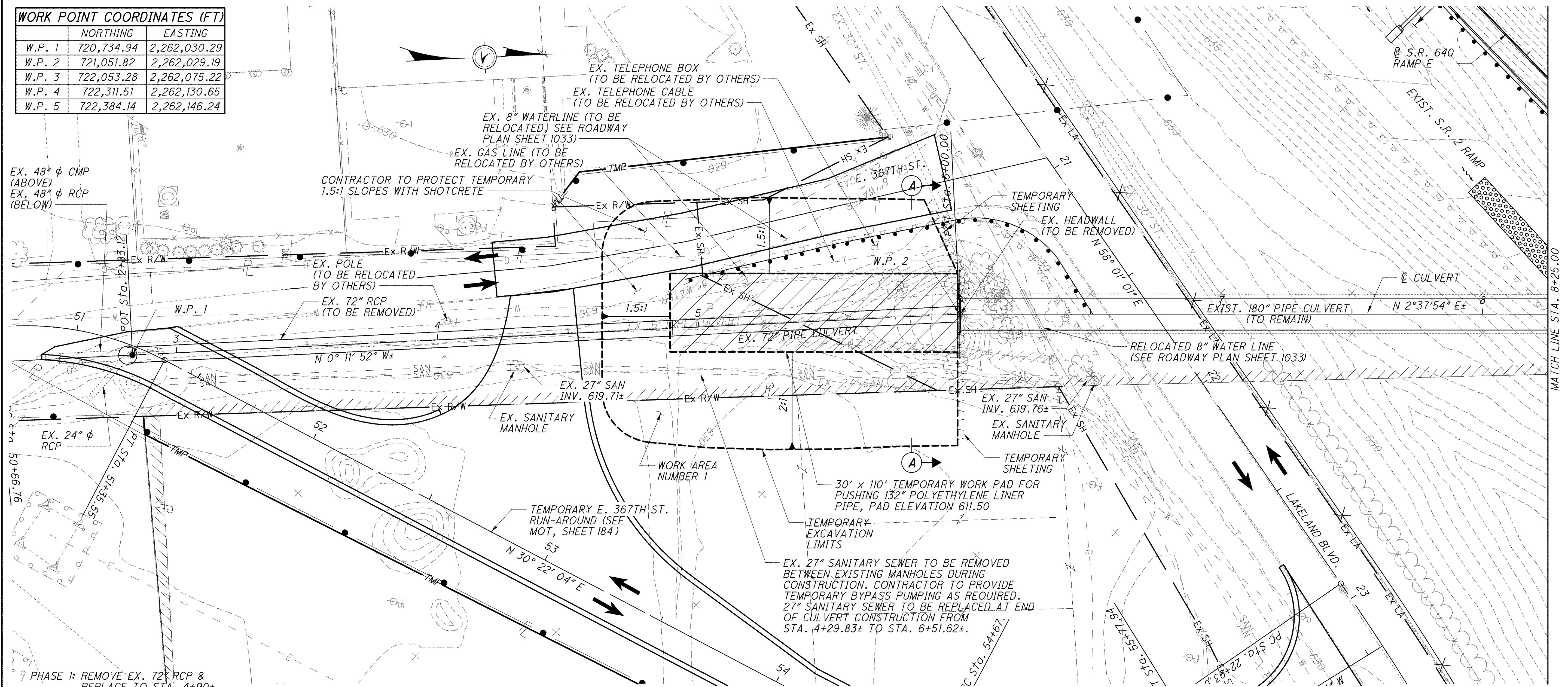


WORK POINT COORDINATES (FT)		
	NORTHING	EASTING
W.P. 1	720,734.94	2,262,030.29
W.P. 2	721,051.82	2,262,029.19
W.P. 3	722,053.28	2,262,075.22
W.P. 4	722,311.51	2,262,130.65
W.P. 5	722,384.14	2,262,146.24



PHASE 1: REMOVE EX. 72" RCP & REPLACE TO STA. 4+90± (TO END AT EVEN PIPE LENGTH)

PHASE 2: INSTALL 110'± 72" RCP TO CULVERT LAK-2-0395.

ORIGINAL SOIL BORING LOCATION

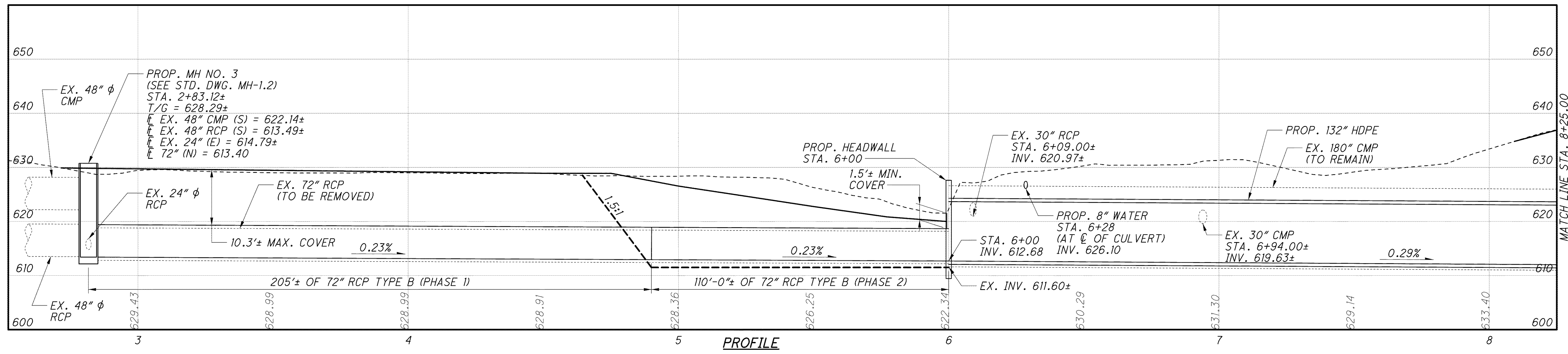
TEMPORARY WORK PAD

NOTES:

1. FOR SECTION A-A, SEE SHEET 8/11.

2. FOR LIST OF ABBREVIATION LIST, SEE SHEET 2/11.

**PLAN**



**PROFILE**