

BENCHMARK DATA

BM #M014 STA.295+09.83,ELEV. 630.08, OFFSET 113.61',RIGHT
 BM #M015 STA.309+93.60,ELEV. 628.99, OFFSET 343.93',RIGHT

FOR ADDITIONAL BENCHMARK INFORMATION. SEE ROADWAY PLAN SHEET 281/1679

NOTES

1. EARTHWORK LIMITS SHOWN ARE APPROXIMATE. ACTUAL SLOPES SHALL CONFORM TO PLAN CROSS SECTIONS.
2. FOR ABBREVIATION LIST, SEE SHEET 2/11
3. FOR THE WORK STAGE, PHASE, STEP, AND ADDITIONAL NOTES, SEE MOT GENERAL NOTES ON SHEET 55

LEGEND

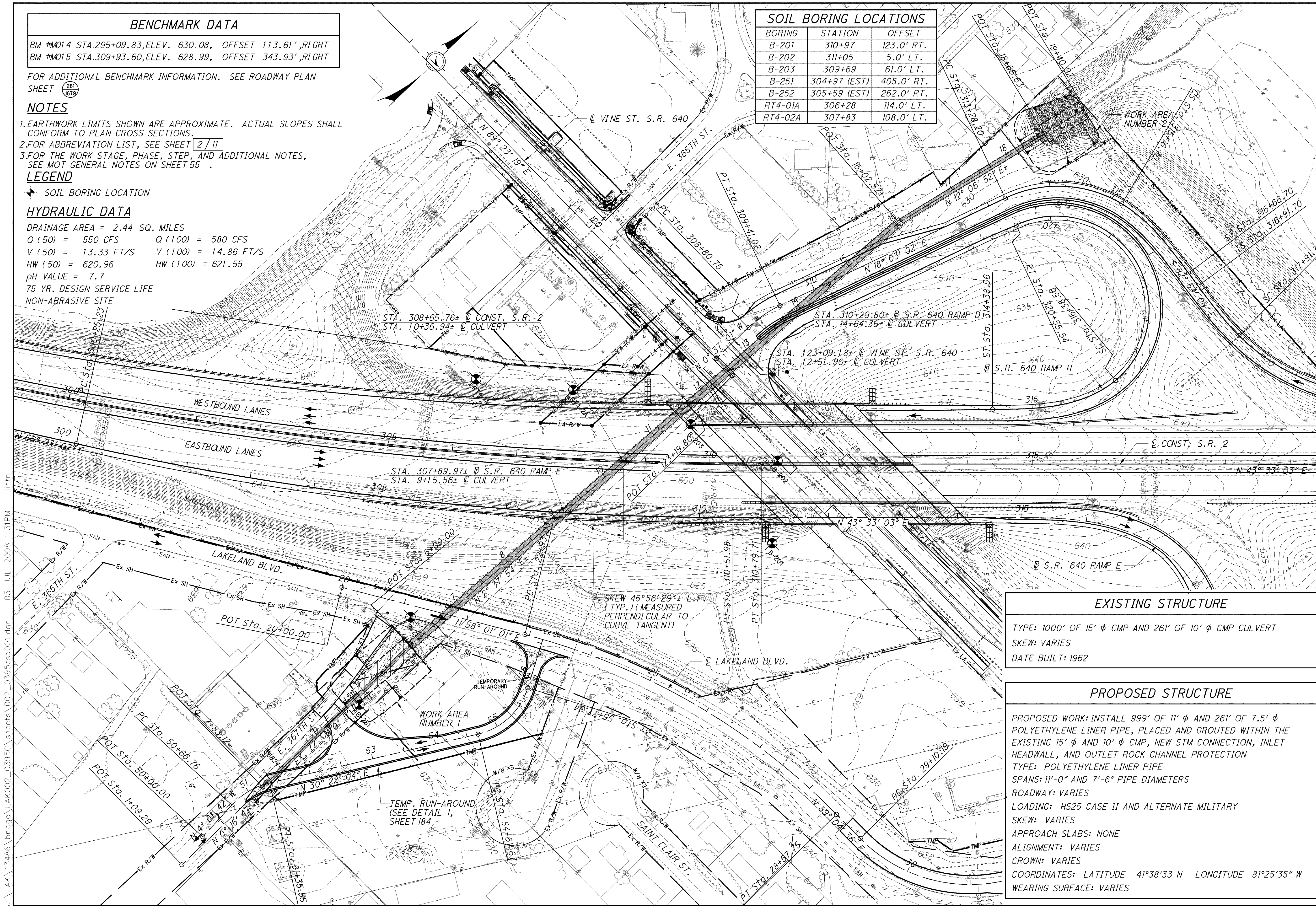
SOIL BORING LOCATION

HYDRAULIC DATA

DRAINAGE AREA = 2.44 SQ. MILES
 Q (50) = 550 CFS Q (100) = 580 CFS
 V (50) = 13.33 FT/S V (100) = 14.86 FT/S
 HW (50) = 620.96 HW (100) = 621.55
 pH VALUE = 7.7
 75 YR. DESIGN SERVICE LIFE
 NON-ABRASIVE SITE

SOIL BORING LOCATIONS

BORING	STATION	OFFSET
B-201	310+97	123.0' RT.
B-202	311+05	5.0' LT.
B-203	309+69	61.0' LT.
B-251	304+97 (EST)	405.0' RT.
B-252	305+59 (EST)	262.0' RT.
RT4-01A	306+28	114.0' LT.
RT4-02A	307+83	108.0' LT.



EXISTING STRUCTURE
 TYPE: 1000' OF 15' φ CMP AND 261' OF 10' φ CMP CULVERT
 SKEW: VARIES
 DATE BUILT: 1962

PROPOSED STRUCTURE
 PROPOSED WORK: INSTALL 999' OF 11' φ AND 261' OF 7.5' φ POLYETHYLENE LINER PIPE, PLACED AND GROUTED WITHIN THE EXISTING 15' φ AND 10' φ CMP, NEW STM CONNECTION, INLET HEADWALL, AND OUTLET ROCK CHANNEL PROTECTION
 TYPE: POLYETHYLENE LINER PIPE
 SPANS: 11'-0" AND 7'-6" PIPE DIAMETERS
 ROADWAY: VARIES
 LOADING: HS25 CASE II AND ALTERNATE MILITARY
 SKEW: VARIES
 APPROACH SLABS: NONE
 ALIGNMENT: VARIES
 CROWN: VARIES
 COORDINATES: LATITUDE 41°38'33 N LONGITUDE 81°25'35 W
 WEARING SURFACE: VARIES

DESIGN AGENCY
 PARSONS BRINCKERHOFF
 QUADE & DOUGLAS, INC.
 614 W. SUPERIOR AVE., SUITE 400
 CLEVELAND, OHIO 44113

DATE
 6-19-08

REVIEWED
 RJO

STRUCTURE FILE NUMBER
 4500548

DESIGNED
 PMP

CHECKED
 BMG

LAKELAND COUNTY
 STA. 308+56.84+
 STA. 308+74.73+

LAYOUT PLAN
 BRIDGE NO. LAK-2-0395
 STATE ROUTE 2 OVER TRIBUTARY OF CHAGRIN RIVER

LAK-2-3.32
PID 13486

1 / 11

1316
 1679

J:\LAK\13486\bridge\LAK002_0395\C\sheets\002_0395\csp001.dgn 03-JUL-2008 1:31PM imtr