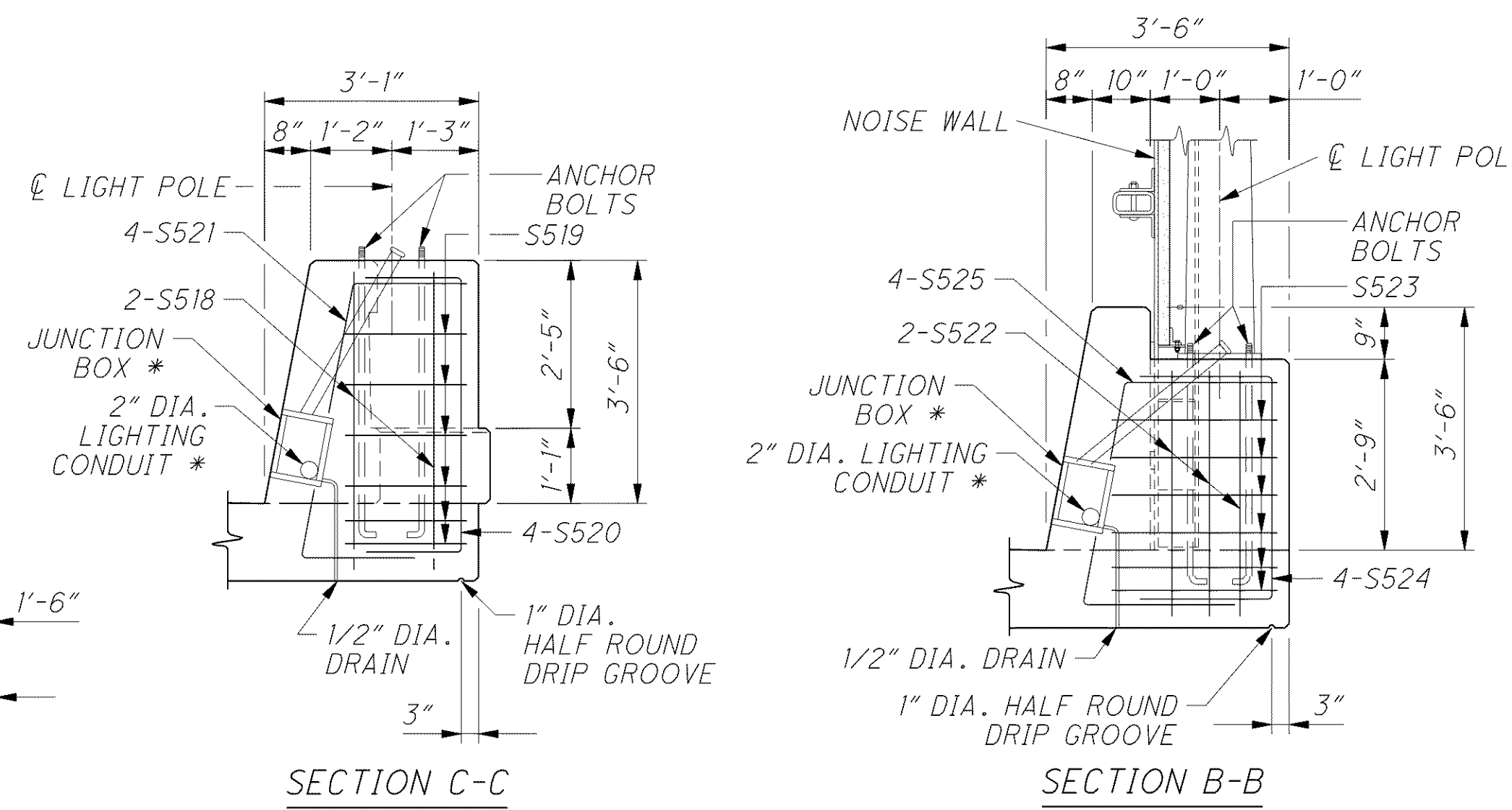
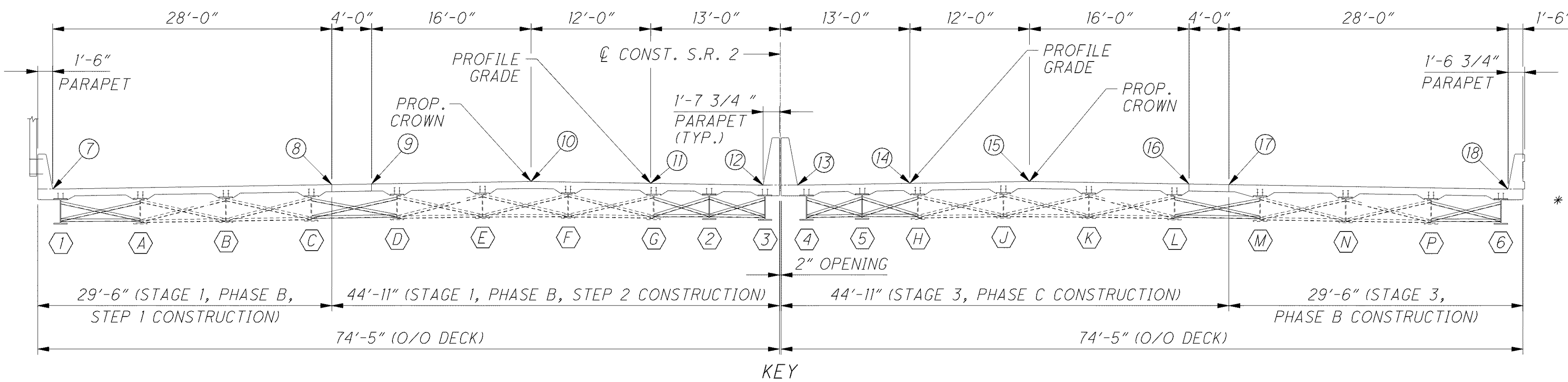
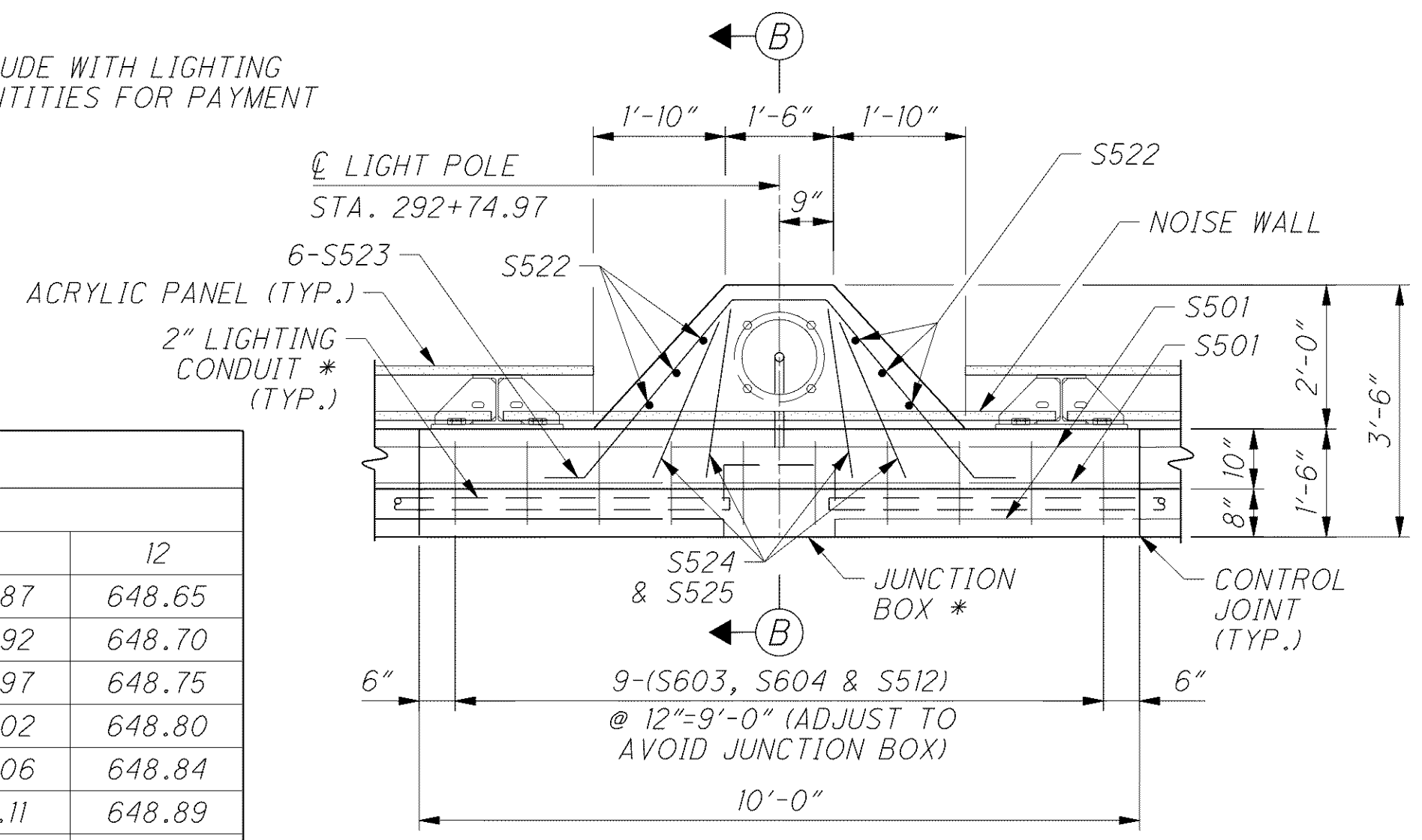


NOTES:

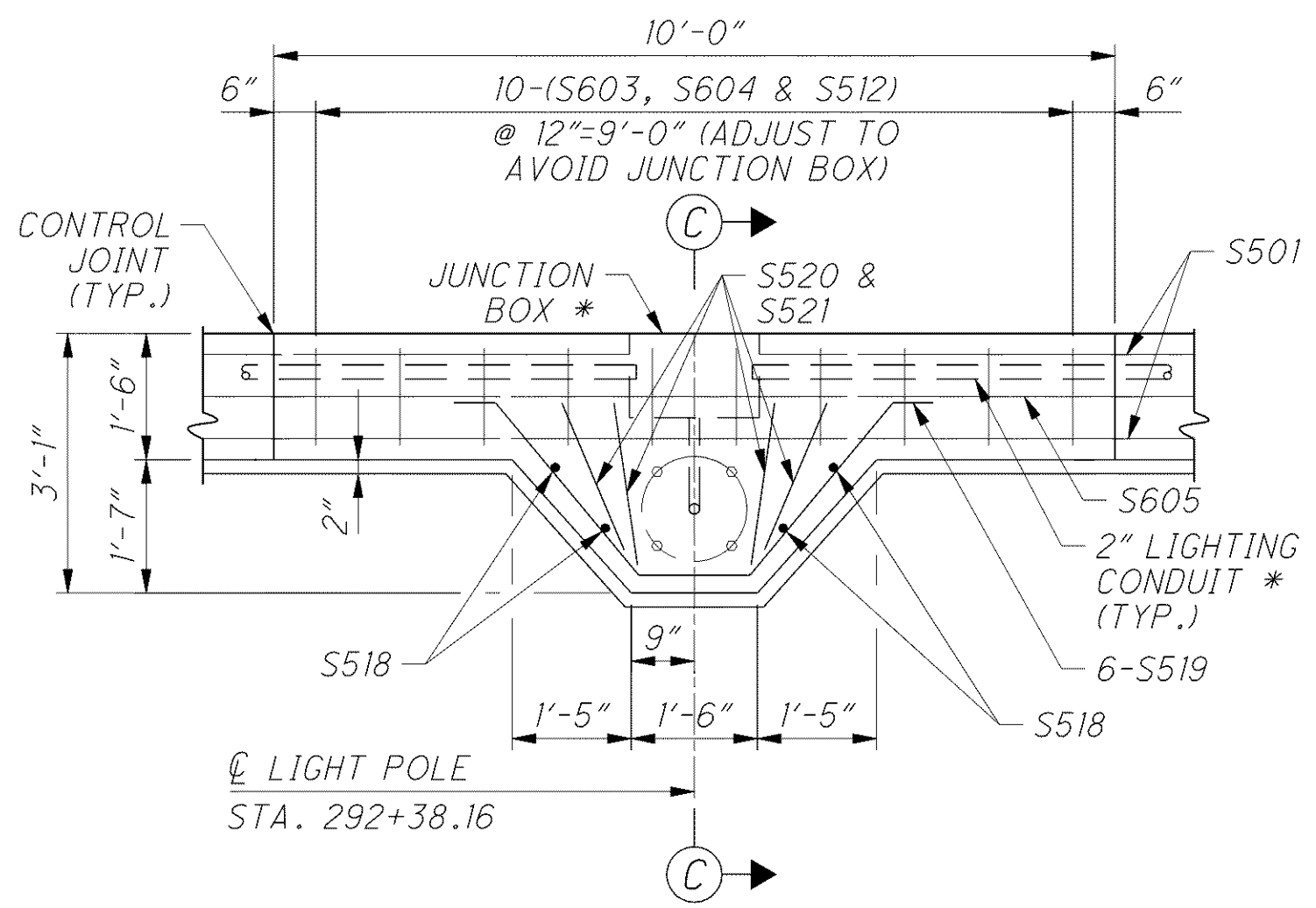
1. SCREED ELEVATIONS SHOWN ARE FOR THE DECK SLAB SURFACE PRIOR TO CONCRETE PLACEMENT. ALLOWANCE HAS BEEN MADE FOR ANTICIPATED CALCULATED DEAD LOAD DEFLECTIONS.
2. FOR DECK SLAB PLAN AND ADDITIONAL DETAILS AND NOTES, SEE SHEETS [31/44] THRU [33/44].
3. FOR FRAMING PLAN AND SHEAR STUD DETAILS SEE SHEETS [21/44] AND [22/44].
4. FOR DECK SLAB DEPTH TABLE, SEE SHEET [30/44].



* INCLUDE WITH LIGHTING QUANTITIES FOR PAYMENT



LIGHT POLE PILASTER DETAIL (LEFT STRUCTURE)



LIGHT POLE PILASTER DETAIL (RIGHT STRUCTURE)

SCREED ELEVATION TABLE (LEFT STRUCTURE)

DESCRIPTION	BEAMS										POINTS					
	I	A	B	C	D	E	F	G	2	3	7	8	9	10	11	12
☉ BRG. REAR ABUT.	648.51	648.62	648.73	648.83	648.94	649.05	649.04	648.87	648.76	648.64	648.50	648.86	648.91	649.11	648.87	648.65
1/4 POINT	648.55	648.66	648.77	648.88	648.99	649.10	649.09	648.92	648.81	648.70	648.54	648.90	648.96	649.16	648.92	648.70
1/2 POINT	648.59	648.70	648.81	648.92	649.03	649.14	649.13	648.97	648.86	648.75	648.58	648.95	649.00	649.21	648.97	648.75
3/4 POINT	648.62	648.73	648.84	648.96	649.07	649.18	649.17	649.01	648.90	648.79	648.61	648.99	649.04	649.25	649.02	648.80
☉ BRG. & PIER NO. 1	648.65	648.76	648.88	649.00	649.11	649.22	649.22	649.05	648.95	648.84	648.64	649.02	649.08	649.29	649.06	648.84
☉ FIELD SPLICE NO. 1	648.71	648.82	648.94	649.05	649.17	649.28	649.28	649.12	649.01	648.91	649.68	649.06	649.12	649.33	649.11	648.89
1/4 POINT	648.73	648.84	648.96	649.08	649.19	649.31	649.30	649.14	649.04	648.93	648.70	649.08	649.14	649.35	649.13	648.91
1/2 POINT	648.78	648.90	649.02	649.14	649.26	649.38	649.38	649.22	649.11	649.01	648.76	649.16	649.21	649.43	649.21	649.00
3/4 POINT	648.80	648.92	649.04	649.17	649.29	649.41	649.41	649.26	649.15	649.05	648.77	649.17	649.23	649.46	649.24	649.03
☉ FIELD SPLICE NO. 2	648.80	648.92	649.04	649.17	649.29	649.41	649.42	649.26	649.16	649.06	648.80	649.20	649.25	649.48	649.27	649.07
☉ BRG. & PIER NO. 2	648.81	648.92	649.05	649.18	649.30	649.42	649.43	649.28	649.18	649.07	648.79	649.21	649.26	649.49	649.28	649.08
1/4 POINT	648.82	648.94	649.06	649.19	649.32	649.44	649.45	649.30	649.20	649.10	648.81	649.23	649.29	649.52	649.31	649.11
1/2 POINT	648.83	648.95	649.08	649.21	649.34	649.47	649.47	649.32	649.23	649.13	648.82	649.24	649.30	649.54	649.33	649.13
3/4 POINT	648.84	648.96	649.10	649.23	649.36	649.48	649.49	649.34	649.25	649.15	648.83	649.26	649.32	649.56	649.35	649.15
☉ BRG. FWD. ABUT.	648.85	648.97	649.10	649.23	649.36	649.49	649.50	649.36	649.26	649.17	648.83	649.27	649.33	649.57	649.36	649.17

SCREED ELEVATION TABLE (RIGHT STRUCTURE)

DESCRIPTION	BEAMS										POINTS							
	4	5	H	J	K	L	M	N	P	6	13	14	15	16	17	18		
☉ BRG. REAR ABUT.	648.64	648.71	648.78	648.88	648.79	648.61	648.43	648.26	648.08	647.93	648.63	648.77	648.91	648.58	648.50	647.92		
1/4 POINT	648.70	648.77	648.84	648.94	648.85	648.67	648.50	648.32	648.14	648.00	648.69	648.82	648.97	648.64	648.56	647.98		
1/2 POINT	648.75	648.82	648.89	648.99	648.90	648.73	648.56	648.38	648.20	648.06	648.74	648.88	649.02	648.70	648.62	648.05		
3/4 POINT	648.79	648.86	648.93	649.04	648.95	648.78	648.61	648.43	648.26	648.12	648.78	648.93	649.07	648.75	648.67	648.11		
☉ BRG. & PIER NO. 1	648.84	648.91	648.98	649.09	649.00	648.83	648.66	648.49	648.32	648.18	648.83	648.97	649.12	648.81	648.73	648.16		
☉ FIELD SPLICE NO. 1	648.91	648.98	649.05	649.16	649.08	648.91	648.74	648.57	648.40	648.26	648.87	649.02	649.17	648.86	648.78	648.23		
1/4 POINT	648.94	649.01	649.08	649.19	649.11	648.94	648.77	648.60	648.43	648.29	648.90	649.05	649.20	648.89	648.81	648.26		
1/2 POINT	649.01	649.09	649.16	649.28	649.20	649.03	648.87	648.70	648.53	648.39	648.99	649.14	649.30	648.99	648.92	648.37		
3/4 POINT	649.06	649.13	649.21	649.32	649.25	649.08	648.92	648.76	648.59	648.46	649.02	649.18	649.34	649.04	648.96	648.42		
☉ FIELD SPLICE NO. 2	649.07	649.14	649.22	649.33	649.26	649.10	648.93	648.77	648.61	648.47	649.05	649.21	649.37	649.07	649.00	648.47		
☉ BRG. & PIER NO. 2	649.08	649.16	649.24	649.35	649.28	649.12	648.96	648.80	648.64	648.50	649.07	649.23	649.39	649.09	649.02	648.49		
1/4 POINT	649.11	649.19	649.27	649.38	649.31	649.15	648.99	648.83	648.67	648.54	649.10	649.26	649.43	649.13	649.06	648.54		
1/2 POINT	649.14	649.22	649.30	649.41	649.34	649.19	649.03	648.87	648.71	648.58	649.12	649.28	649.45	649.16	649.09	648.57		
3/4 POINT	649.16	649.24	649.32	649.44	649.37	649.22	649.06	648.91	648.75	648.62	649.15	649.31	649.48	649.19	649.12	648.61		
☉ BRG. FWD. ABUT.	649.18	649.26	649.34	649.46	649.39	649.24	649.09	648.93	648.78	648.65	649.16	649.33	649.50	649.22	649.14	648.64		