

0 10 20 40
HORIZONTAL
SCALE IN FEET

CALCULATED
JMS
CHECKED
ZFB

**UNDERPASS LIGHTING DETAILS
S.R. 2 AND VINE STREET**

LAK-2-3.32

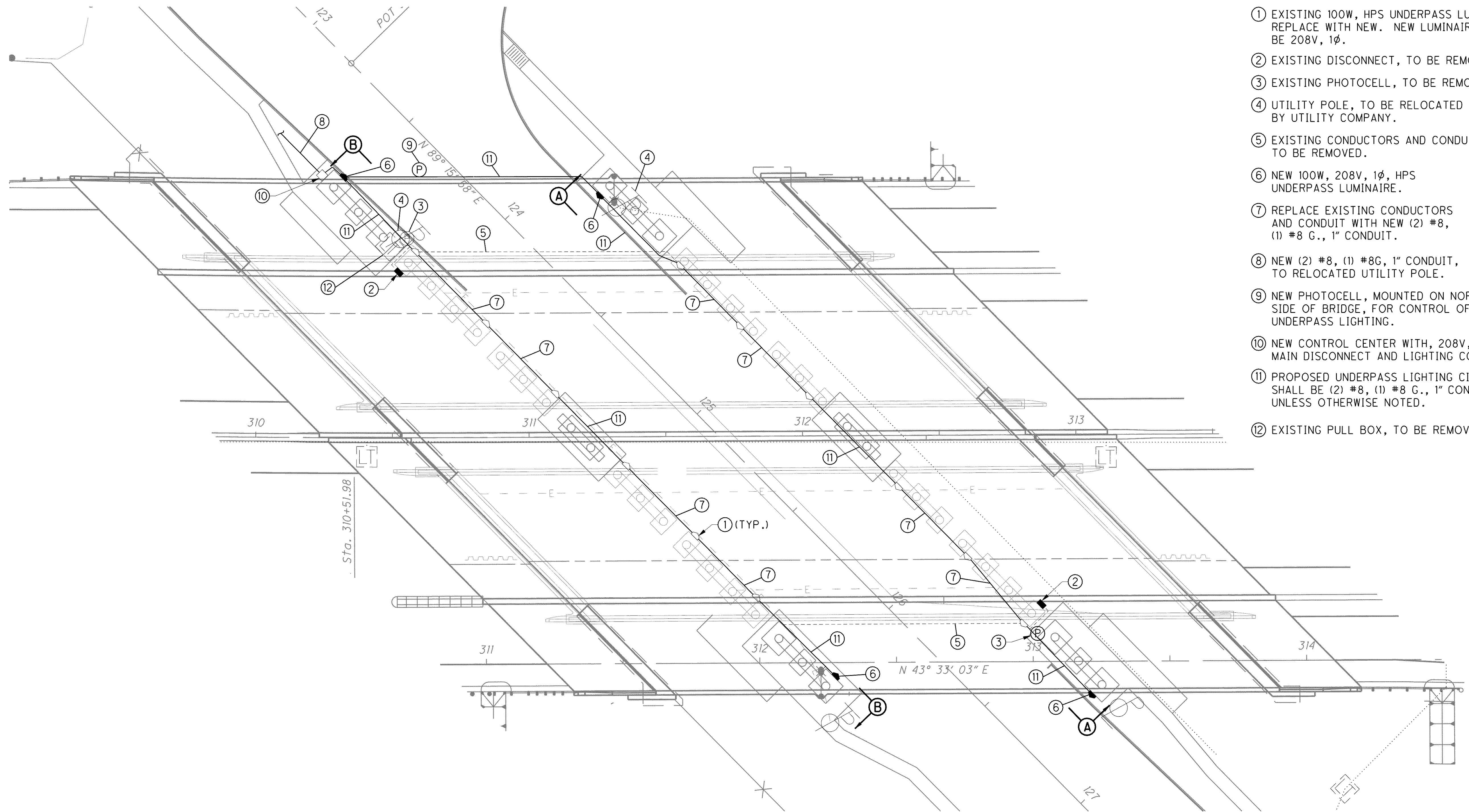
1262
1679

GENERAL NOTES

1.) SEE SHEET 1263 FOR PIER ELEVATIONS.

PLAN NOTES

- ① EXISTING 100W, HPS UNDERPASS LUMINAIRE. REPLACE WITH NEW. NEW LUMINAIRE SHALL BE 208V, 1 ϕ .
- ② EXISTING DISCONNECT, TO BE REMOVED.
- ③ EXISTING PHOTOCELL, TO BE REMOVED.
- ④ UTILITY POLE, TO BE RELOCATED BY UTILITY COMPANY.
- ⑤ EXISTING CONDUCTORS AND CONDUIT, TO BE REMOVED.
- ⑥ NEW 100W, 208V, 1 ϕ , HPS UNDERPASS LUMINAIRE.
- ⑦ REPLACE EXISTING CONDUCTORS AND CONDUIT WITH NEW (2) #8, (1) #8 G., 1" CONDUIT.
- ⑧ NEW (2) #8, (1) #8G, 1" CONDUIT, TO RELOCATED UTILITY POLE.
- ⑨ NEW PHOTOCELL, MOUNTED ON NORTH SIDE OF BRIDGE, FOR CONTROL OF UNDERPASS LIGHTING.
- ⑩ NEW CONTROL CENTER WITH, 208V, 1 ϕ , 20A MAIN DISCONNECT AND LIGHTING CONTACTOR.
- ⑪ PROPOSED UNDERPASS LIGHTING CIRCUITING SHALL BE (2) #8, (1) #8 G., 1" CONDUIT UNLESS OTHERWISE NOTED.
- ⑫ EXISTING PULL BOX, TO BE REMOVED.



UNDERPASS LIGHTING PLAN - VINE STREET

g:\project\lak\13486\lighting\sheets\13486LD001.dgn 7/11/2008 8:44:46 AM dshoner