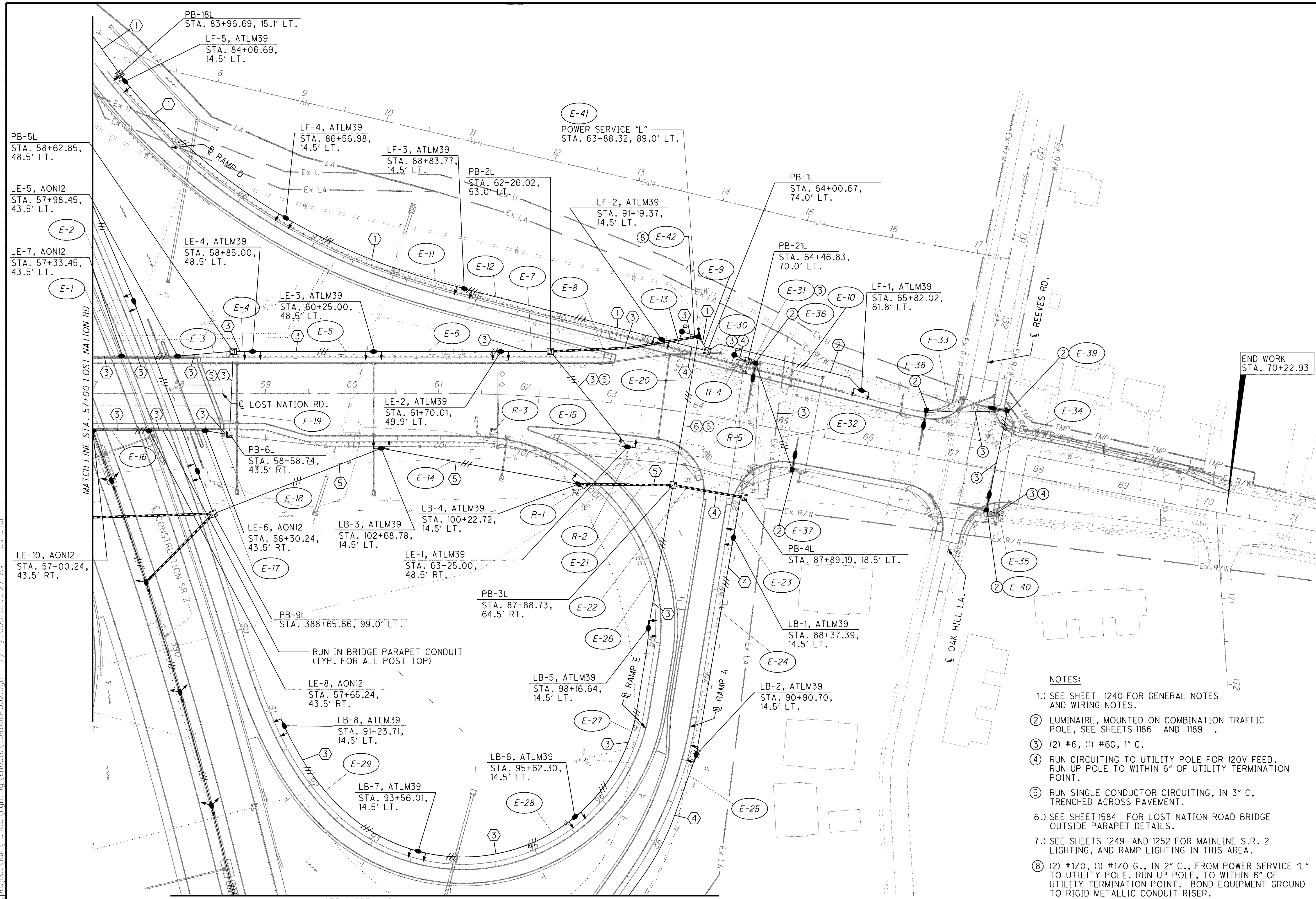


CALCULATED JMS  
CHECKED ZFB

**LIGHTING PLAN  
LOST NATION RD. STA. 57+00 TO END WORK**

**LAK-2-3.32**

1251  
1679



END WORK  
STA. 70+22.93

- NOTES:**
- 1.) SEE SHEET 1240 FOR GENERAL NOTES AND WIRING NOTES.
  - 2) LUMINAIRE, MOUNTED ON COMBINATION TRAFFIC POLE, SEE SHEETS 1186 AND 1189 .
  - 3) (2) #6, (1) #6G, 1" C.
  - 4) RUN CIRCUITING TO UTILITY POLE FOR 120V FEED. RUN UP POLE TO WITHIN 6" OF UTILITY TERMINATION POINT.
  - 5) RUN SINGLE CONDUCTOR CIRCUITING, IN 3" C, TRENCHED ACROSS PAVEMENT.
  - 6.) SEE SHEET 1584 FOR LOST NATION ROAD BRIDGE OUTSIDE PARAPET DETAILS.
  - 7.) SEE SHEETS 1249 AND 1252 FOR MAINLINE S.R. 2 LIGHTING, AND RAMP LIGHTING IN THIS AREA.
  - 8) (2) #1/0, (1) #1/0 G., IN 2" C., FROM POWER SERVICE "L" TO UTILITY POLE. RUN UP POLE, TO WITHIN 6" OF UTILITY TERMINATION POINT. BOND EQUIPMENT GROUND TO RIGID METALLIC CONDUIT RISER.

SEE SHEET 1252

o:\project\lak\13486\lighting\sheets\13486LP302.dgn 7/11/2008 8:53:27 AM ashner