

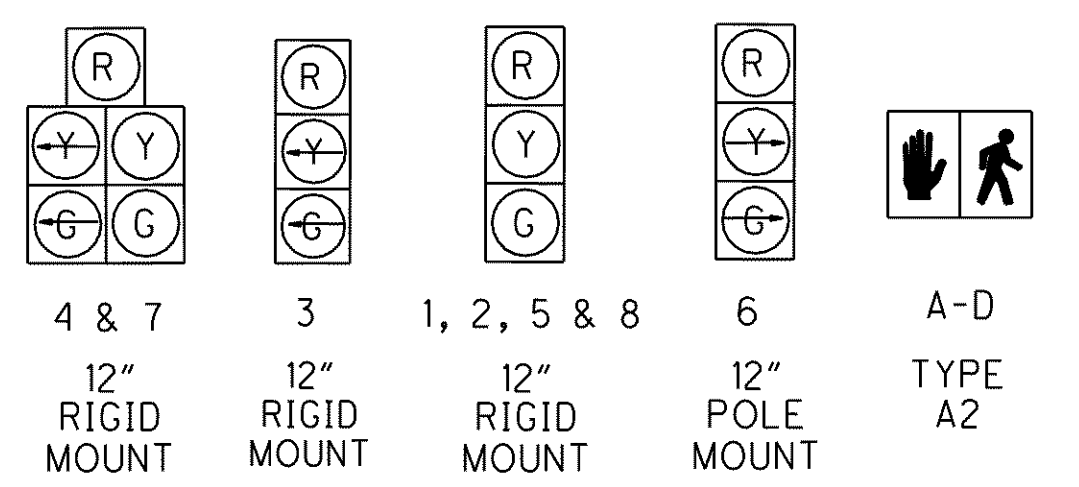
0 10 20 40
HORIZONTAL
SCALE IN FEET

CALCULATED
DATE
CHECKED
MAH

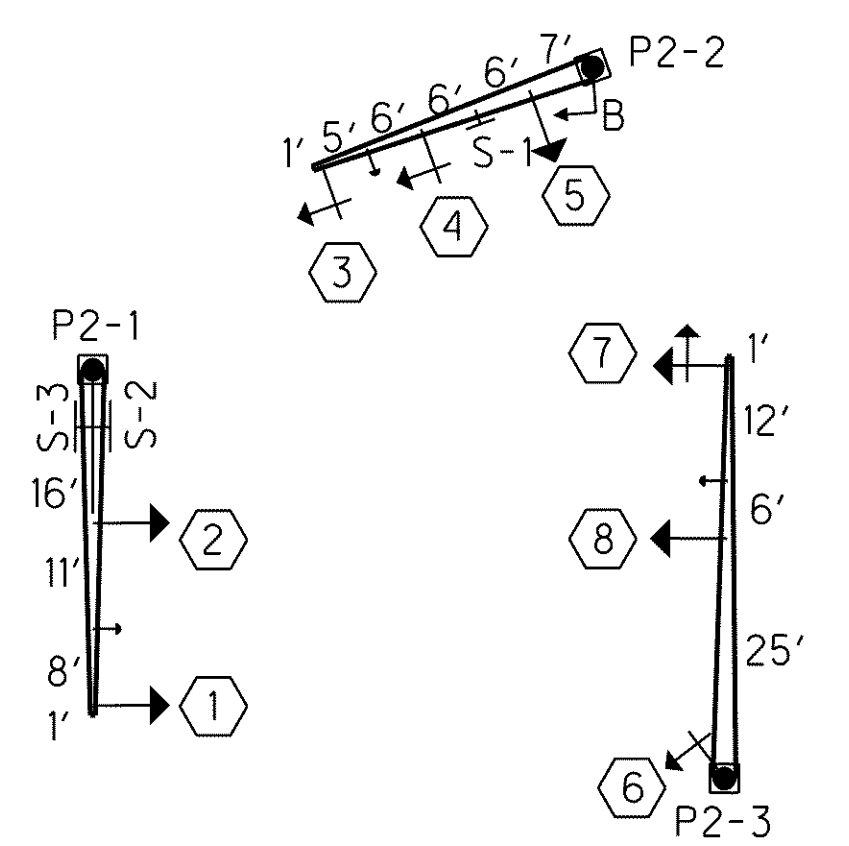
TRAFFIC SIGNAL PLAN
REYNOLDS RD / RAMP I / RAMP O INTERSECTION

LAK-2-3.32

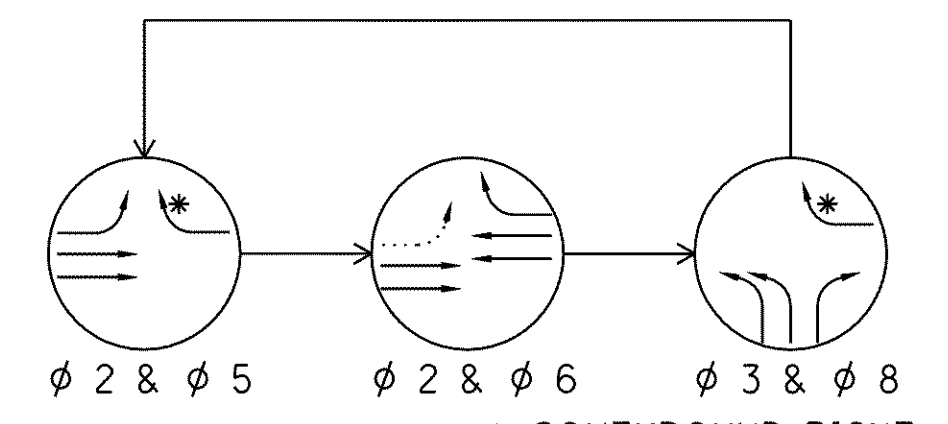
1197
1679



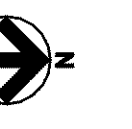
SIGNAL INDICATIONS



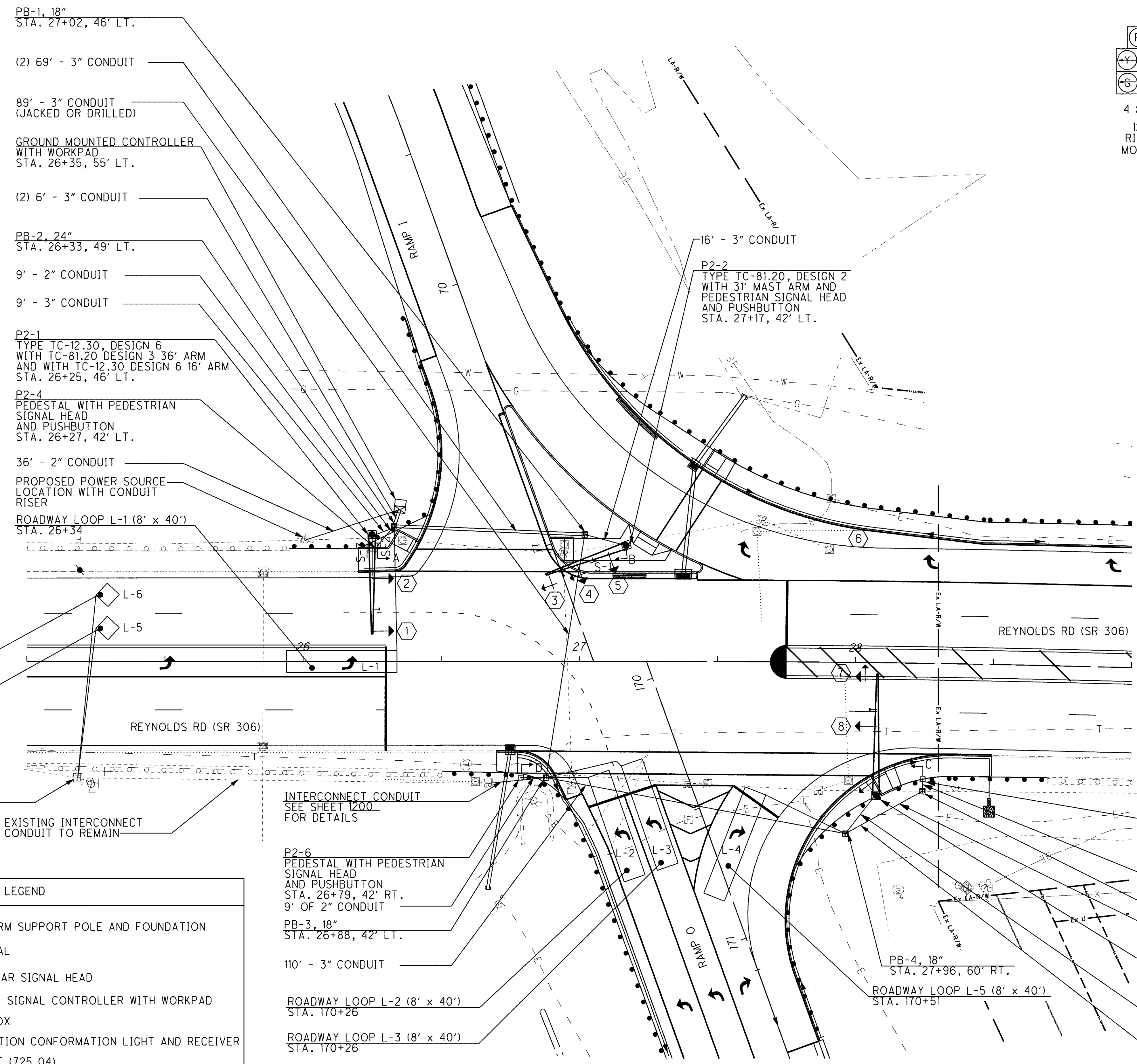
MAST ARM DIAGRAM



PHASING DIAGRAM



* SOUTHBOUND RIGHT TURN IS CONTINUOUS



S-1
REYNOLDS RD
D3-H2A-96
RIDGE MOUNT
96" X 18"

S-2
2 WEST
Cleveland
M2-H6
LEVEL 3
108" X 84"

S-3
2 WEST
Cleveland
M2-H6
LEVEL 3
108" X 84"

PB-1, 18"
STA. 27+02, 46' LT.

(2) 69' - 3" CONDUIT

89' - 3" CONDUIT
(JACKED OR DRILLED)

GROUND MOUNTED CONTROLLER
WITH WORKPAD
STA. 26+35, 55' LT.

(2) 6' - 3" CONDUIT

PB-2, 24"
STA. 26+33, 49' LT.

9' - 2" CONDUIT

9' - 3" CONDUIT

P2-1
TYPE TC-12.30, DESIGN 6
WITH TC-81.20 DESIGN 3 36' ARM
AND WITH TC-12.30 DESIGN 6 16' ARM
STA. 26+25, 46' LT.

P2-4
PEDESTAL WITH PEDESTRIAN
SIGNAL HEAD
AND PUSHBUTTON
STA. 26+27, 42' LT.

36' - 2" CONDUIT

PROPOSED POWER SOURCE
LOCATION WITH CONDUIT
RISER

ROADWAY LOOP L-1 (8' x 40')
STA. 26+34

ROADWAY LOOP L-6 (6' x 6')
STA. 25+25

ROADWAY LOOP L-5 (6' x 6')
STA. 25+25

EXISTING PULL BOX
TO REMAIN

EXISTING INTERCONNECT
CONDUIT TO REMAIN

INTERCONNECT CONDUIT
SEE SHEET 1200
FOR DETAILS

P2-6
PEDESTAL WITH PEDESTRIAN
SIGNAL HEAD
AND PUSHBUTTON
STA. 26+79, 42' RT.
9' OF 2" CONDUIT

PB-3, 18"
STA. 26+88, 42' LT.

110' - 3" CONDUIT

ROADWAY LOOP L-2 (8' x 40')
STA. 170+26

ROADWAY LOOP L-3 (8' x 40')
STA. 170+26

PB-4, 18"
STA. 27+96, 60' RT.

ROADWAY LOOP L-5 (8' x 40')
STA. 170+51

P2-5
PEDESTAL WITH PEDESTRIAN
SIGNAL HEAD
AND PUSHBUTTON
STA. 28+25, 42' RT.

4' - 2" CONDUIT

PB-5, 18"
STA. 28+25, 46' RT.

32' - 2" CONDUIT

P2-3
TYPE TC-81.20, DESIGN 11
WITH 44' MAST ARM
STA. 28+08, 48' RT.

18' - 3" CONDUIT

INTERCONNECT CONDUIT
SEE SHEET 1200
FOR DETAILS

FOR INTERCONNECT PLAN,
SEE SHEET 1200.

LEGEND

- PROPOSED MAST ARM SUPPORT POLE AND FOUNDATION
- PROPOSED PEDESTAL
- PROPOSED VEHICULAR SIGNAL HEAD
- PROPOSED TRAFFIC SIGNAL CONTROLLER WITH WORKPAD
- PROPOSED PULL BOX
- PROPOSED PREEMPTION CONFORMATION LIGHT AND RECEIVER
- PROPOSED CONDUIT (725.04)
- PROPOSED SIGN
- VEHICLE LOOP DETECTOR

\\Akrn01\Data\Civil\2004108\00\13486\signals\13486CPREY02.dgn 6/16/2008 9:30:23 AM svarrecchia