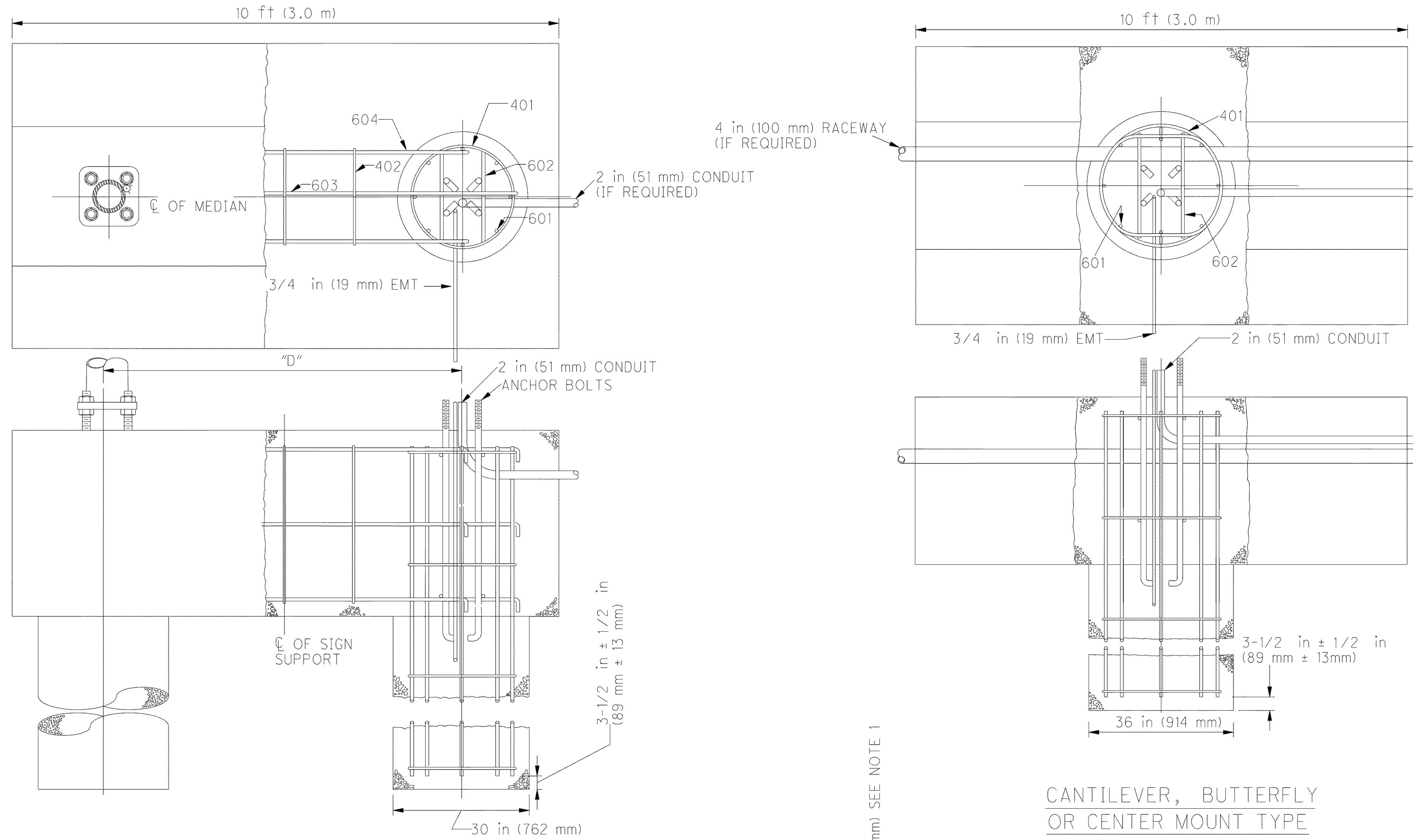
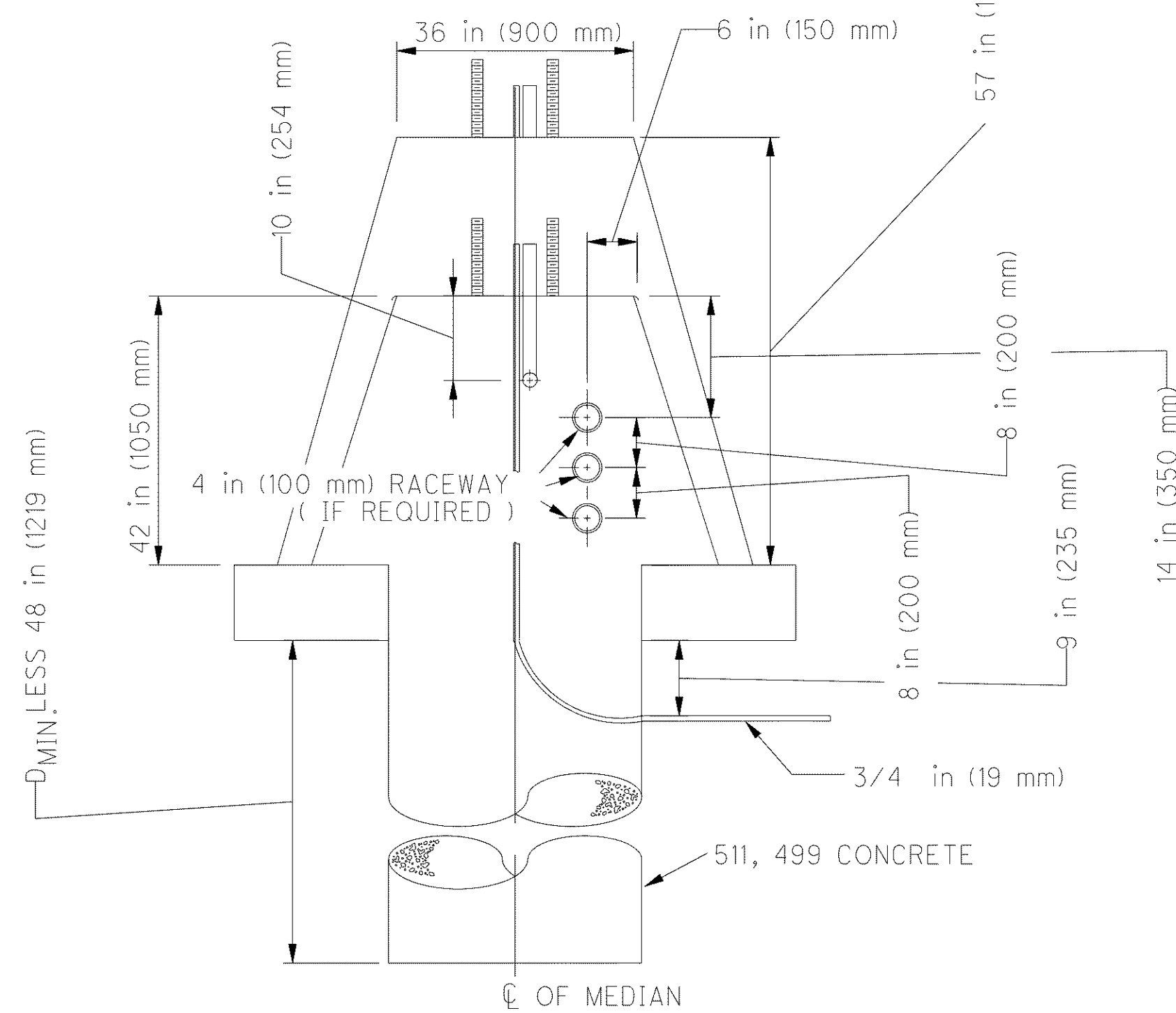


g:\project\lak\13486\traffic\sheets\PIS_202150_v8_112706.dgn 6/23/2008 10:57:37 AM jmoderia



SPAN TYPE



SEE NOTE 1

CANTILEVER, BUTTERFLY OR CENTER MOUNT TYPE

NOTES

1. If a 57 inch (1450 mm) wall is required the reinforcing steel and anchor bolts shall remain in the same position, relative to the top of the wall, as in the 42 inch (1050 mm) wall.
2. With the following modifications to the reinforcement schedules: refer to Standard Construction Drawings TC-21.10 and TC-32.10 for typical dimensions

42 inch (1050 mm) WALL

Mark 601 Length = D min. - 13 inches (330 mm)
 Mark 603 Number = 3
 Mark 604 Number = 6
 Mark 402 Vertical Dimension = 36 inches (900 mm)

57 inch (1450 mm) WALL

Mark 601 Length = D min +5 inches (127 mm)
 Mark 603 Number = 4
 Mark 604 Number = 8
 Mark 402 Vertical Dimension = 52 inches (1300 mm)

3. For information regarding the transition sections of the barrier wall, see Standard Construction Drawing RM-4.4.
4. For single slope concrete barrier shapes, see Standard Construction Drawing RM-4.3.