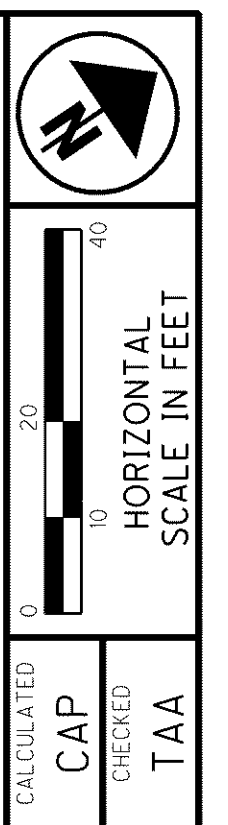
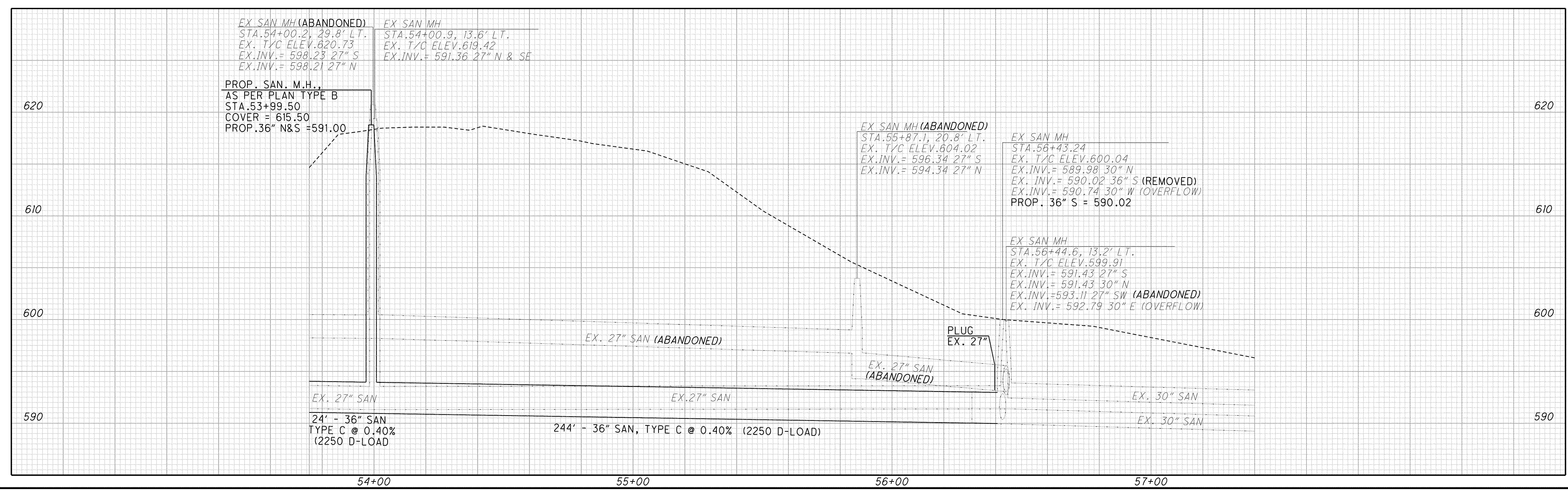
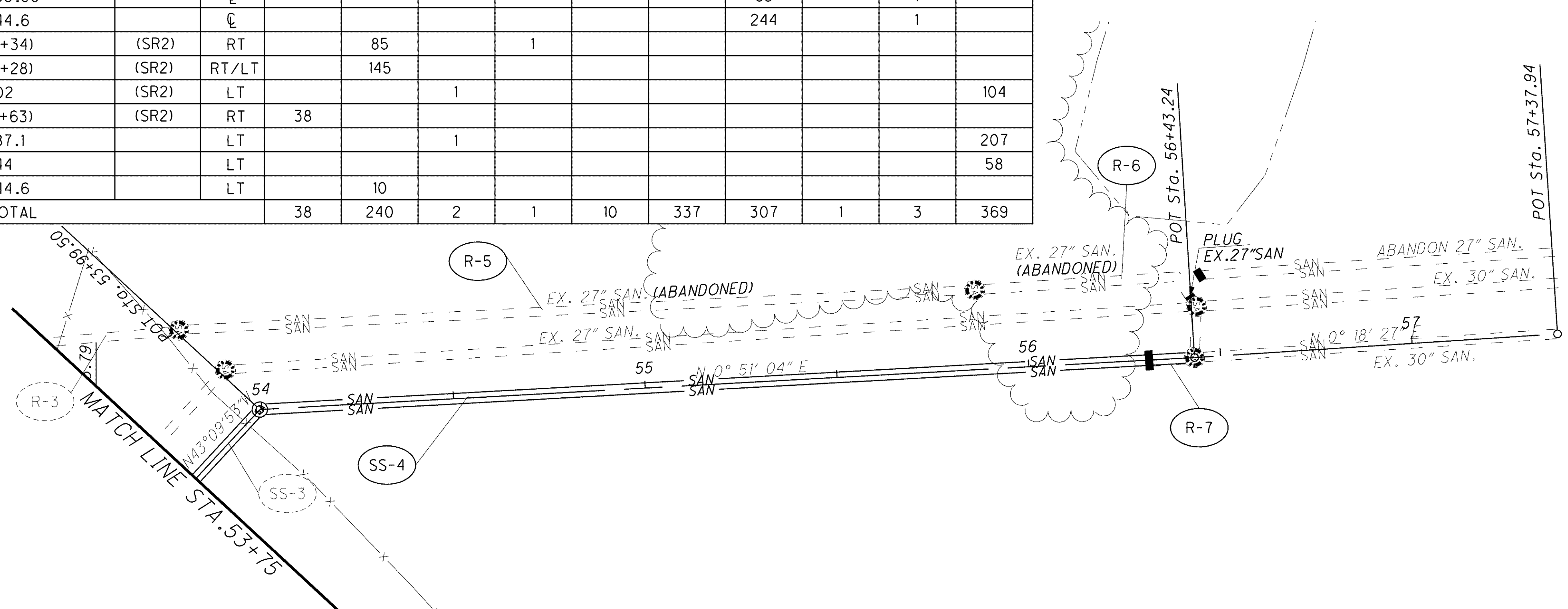


o:\project\lak\13486\utilities\sheets\13486UP008.dgn 7/2/2008 9:54:31 AM cpeters

REF. NO.	LOCATION				202				603			604	SPECIAL	
	STATION		ROAD	SIDE	PIPE REMOVED UNDER 24"	PIPE REMOVED OVER 24"	MANHOLE ABANDONED	MANHOLE REMOVED	18" CONDUIT, TYPE B 706.03	36" CONDUIT, TYPE B 706.03	36" CONDUIT, TYPE C 706.03	MANHOLE, RECONSTRUCTED TO GRADE	MANHOLE, AS PER PLAN, TYPE B	FILL AND PLUG EXISTING CONDUIT
	FROM	TO												
SS-1	50+00	51+09.49		℄	FT	FT	EACH	EACH	FT	FT	FT	EACH	EACH	FT
SS-2	51+09.49	53+36.79		℄						227			1	
SS-3	53+36.79	53+99.50		℄							63		1	
SS-4	53+99.50	56+44.6		℄						244			1	
R-1	(388+55)	(339+34)	(SR2)	RT		85		1						
R-2	(339+34)	(340+28)	(SR2)	RT/LT		145								
R-3	(340+28)	54+02	(SR2)	LT			1							104
R-4	(339+34)	(339+63)	(SR2)	RT	38									
R-5	54+02	55+87.1		LT			1							207
R-6	55+87.1	56+44		LT										58
R-7	56+34	56+44.6		LT		10								
SHEET TOTAL					38	240	2	1	10	337	307	1	3	369



SANITARY SEWER PLAN AND PROFILE
STA. 54+00 TO STA. 58+00

LAK-2-3.32

1030E
1679