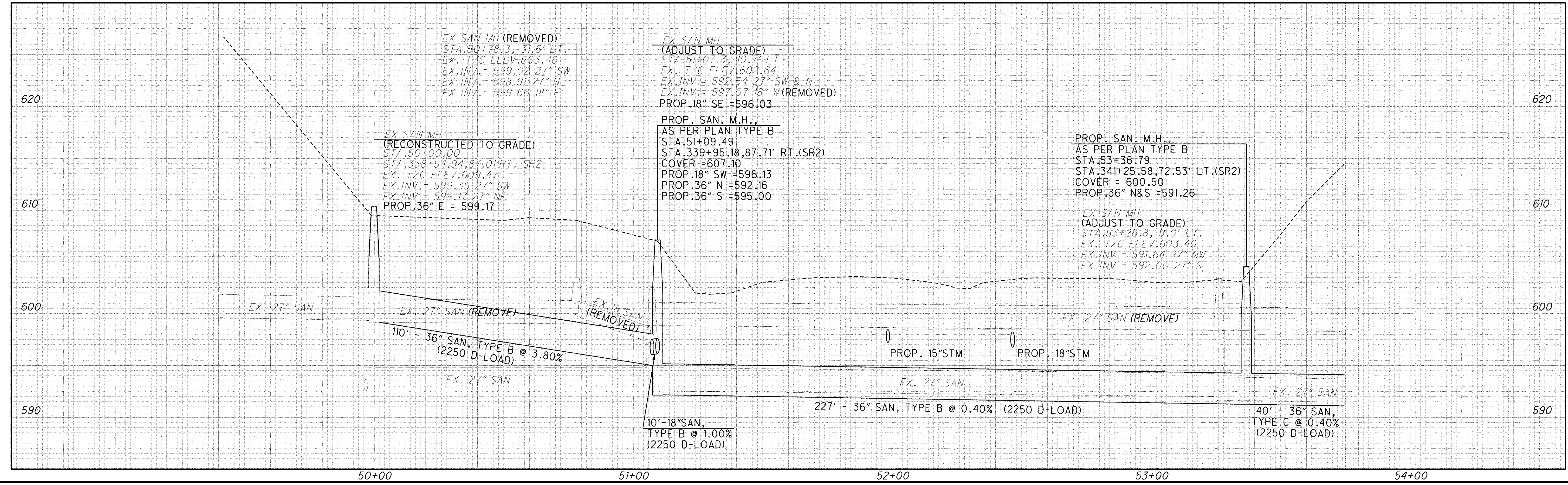
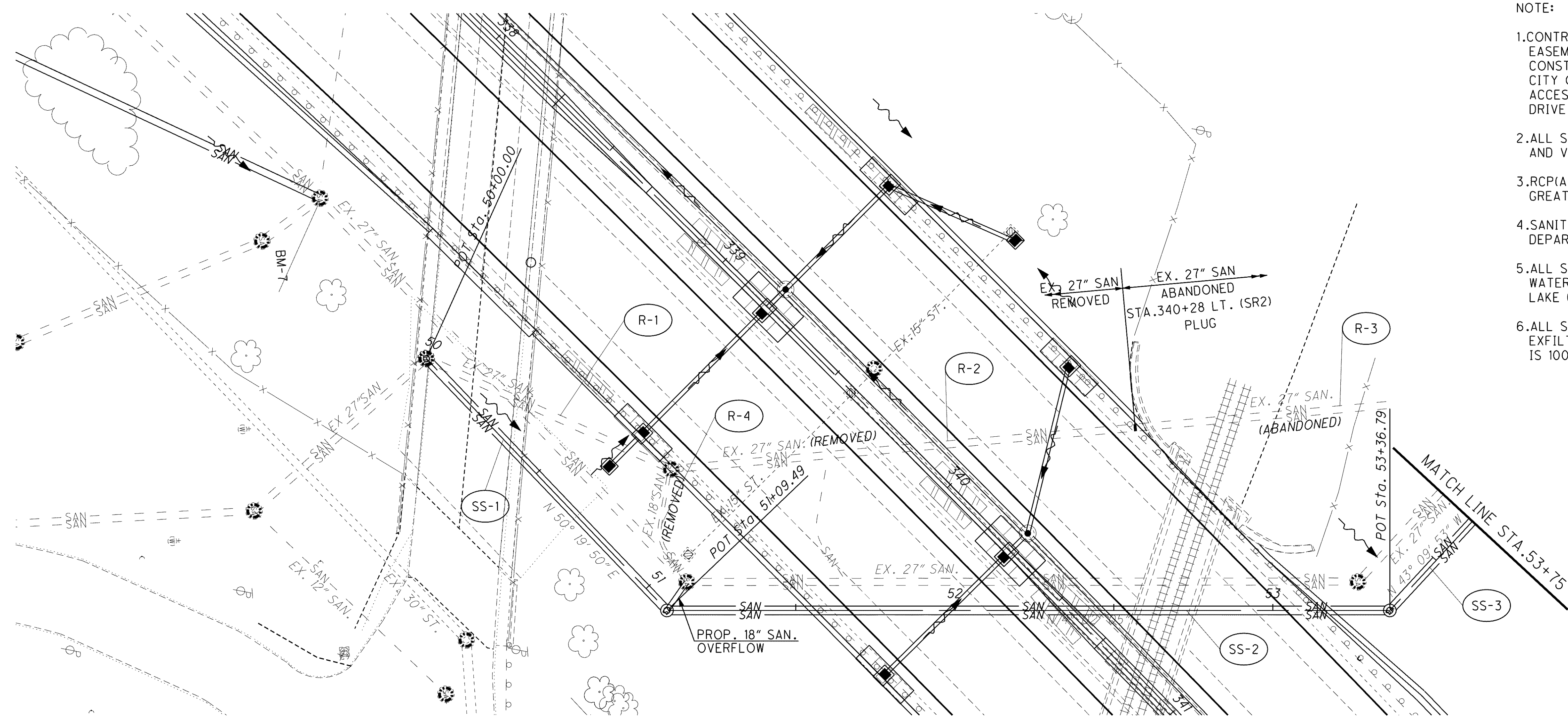




CALCULATED CAP CHECKED TAA

- NOTE:
1. CONTRACTOR TO ACCESS THE SANITARY SEWER EASEMENT FROM SR2 VIA THE TEMPORARY CONSTRUCTION EASEMENT PROVIDED BY THE CITY OF WILLOUGHBY. NO TEMPORARY ACCESS WILL PERMITTED FROM RESEARCH DRIVE.
  2. ALL SANITARY SEWER MAIN ARE TO BE TELEVIEWED AND VIDEOTAPED PRIOR TO ACCEPTANCE.
  3. RCP (ASTMC-76) EPOXY COATED FOR SIZES GREATER THAN 15"
  4. SANITARY MANHOLES, TYPE B PER LAKE COUNTY DEPARTMENT OF UTILITIES.
  5. ALL SANITARY SEWER PIPES TO HAVE WATER TIGHT GASKET JOINTS PER LAKE COUNTY STANDARDS.
  6. ALL SANITARY SEWERS TO BE TESTED VIA AIR OR EXFILTRATION TEST. ALLOWABLE LEAKAGE RATE IS 100 GPD/IN-MILE (EXFILTRATION)



o:\project\lak\13486\utilities\sheets\13486UP007.dgn 7/2/2008 9:54:22 AM cpeters

**SANITARY SEWER PLAN AND PROFILE  
STA. 50+00 TO STA. 54+00**

**LAK-2-3.32**

1030A  
1679