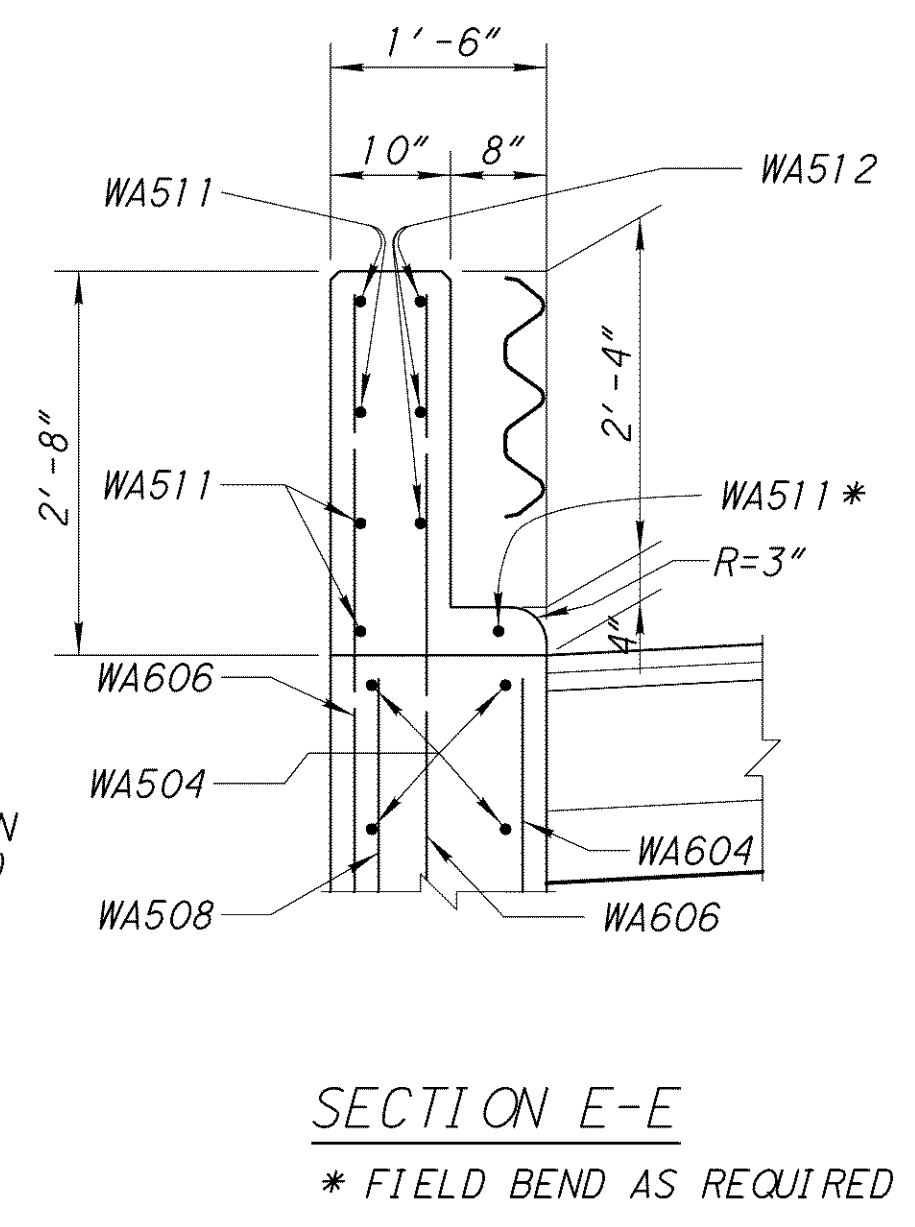
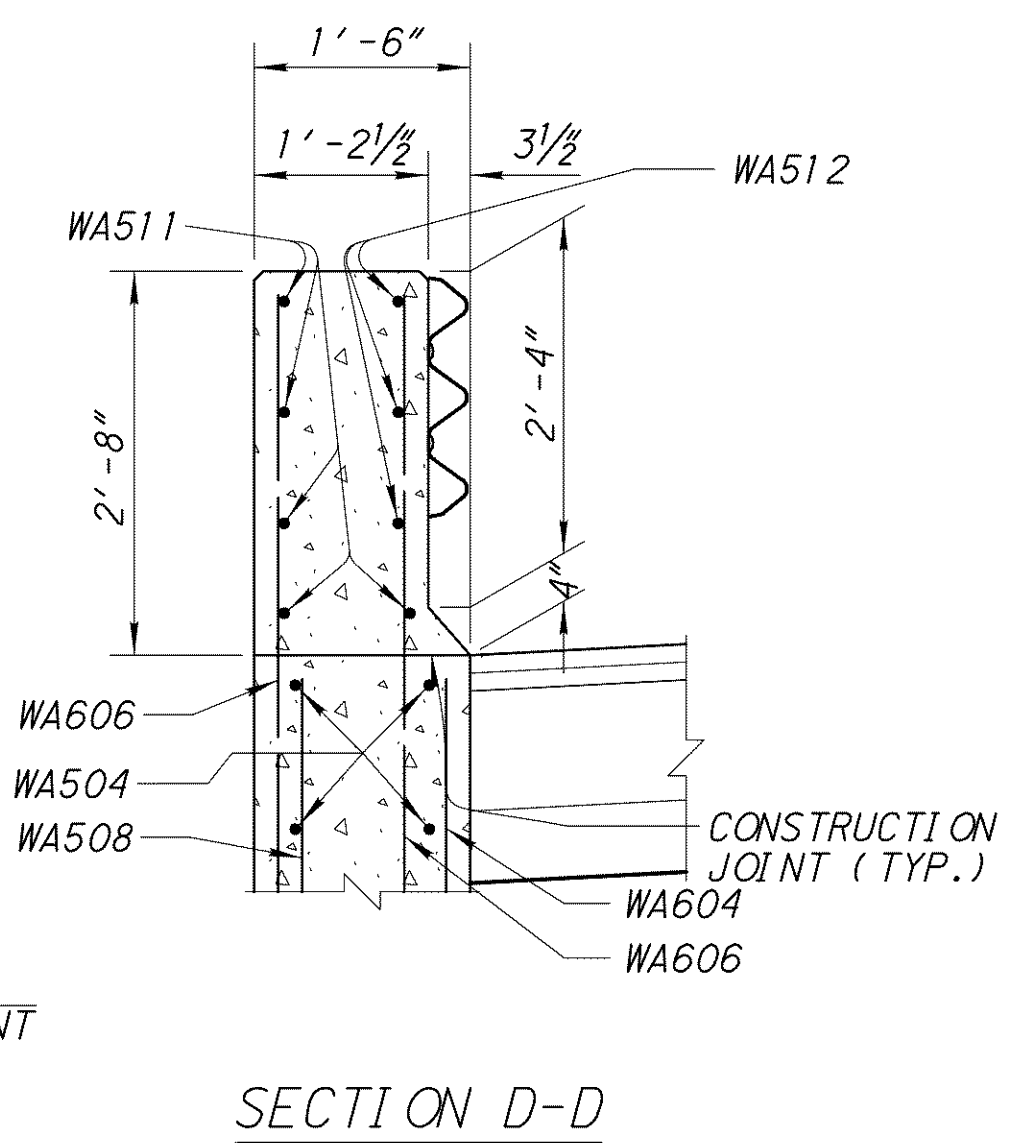
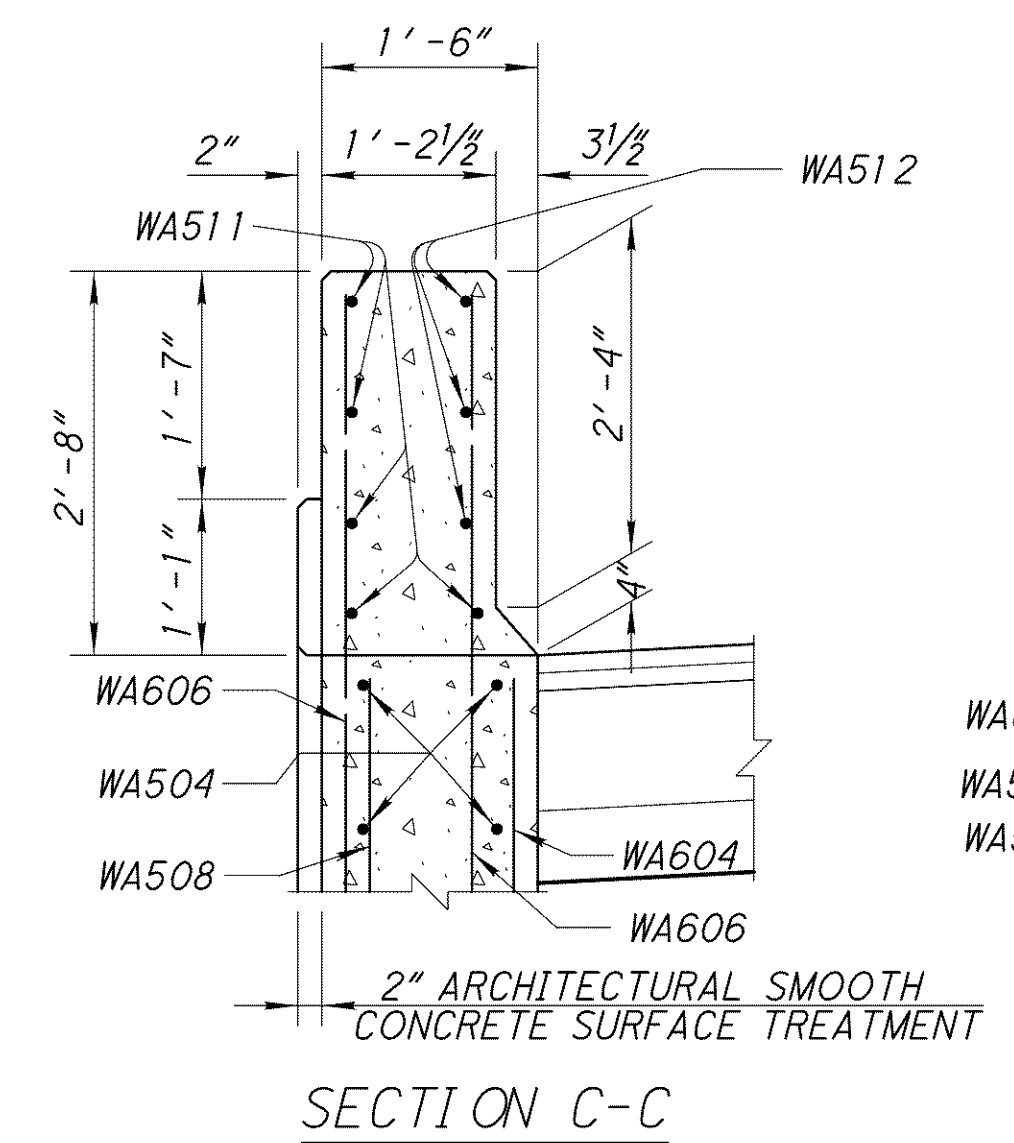
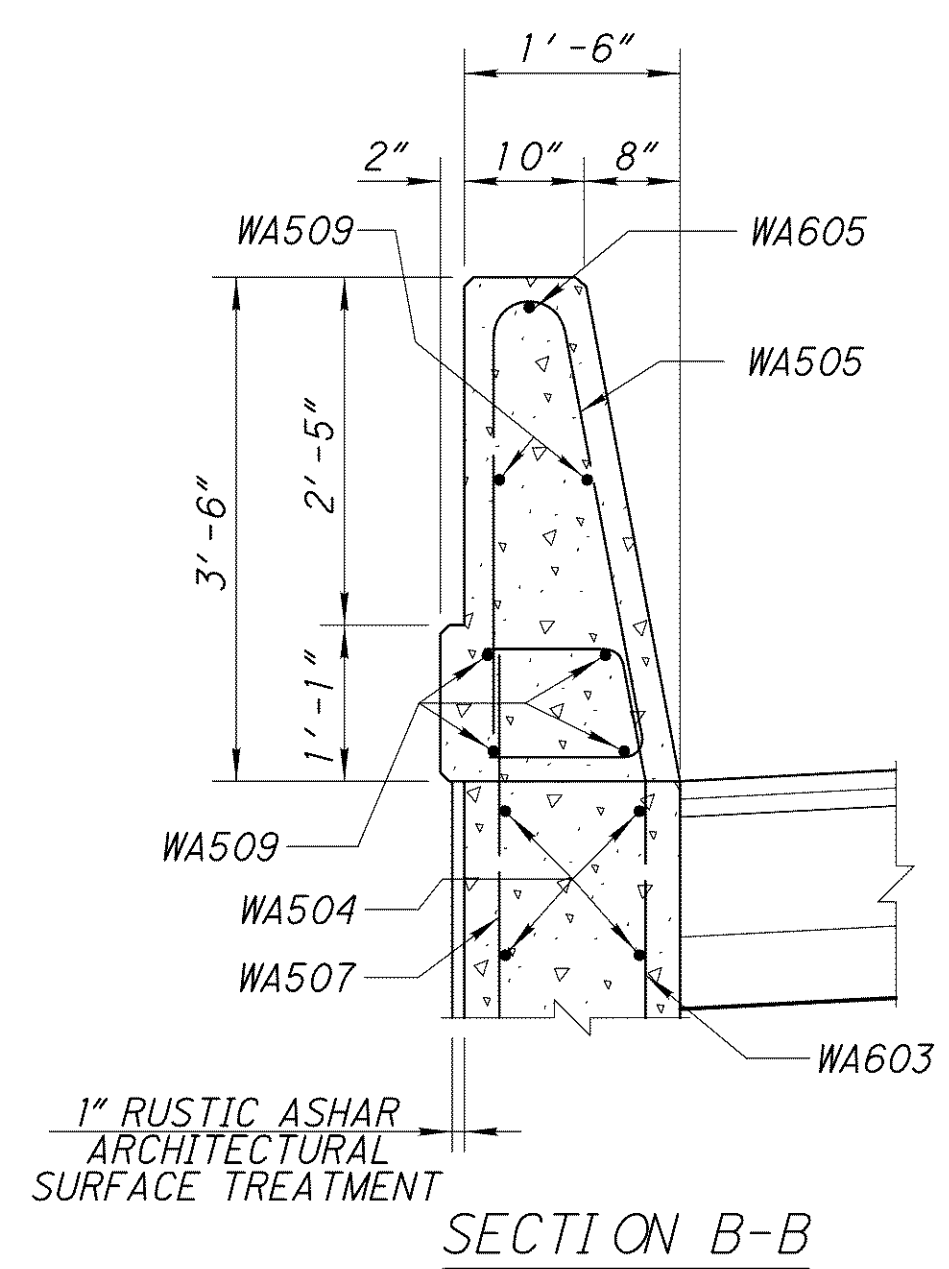
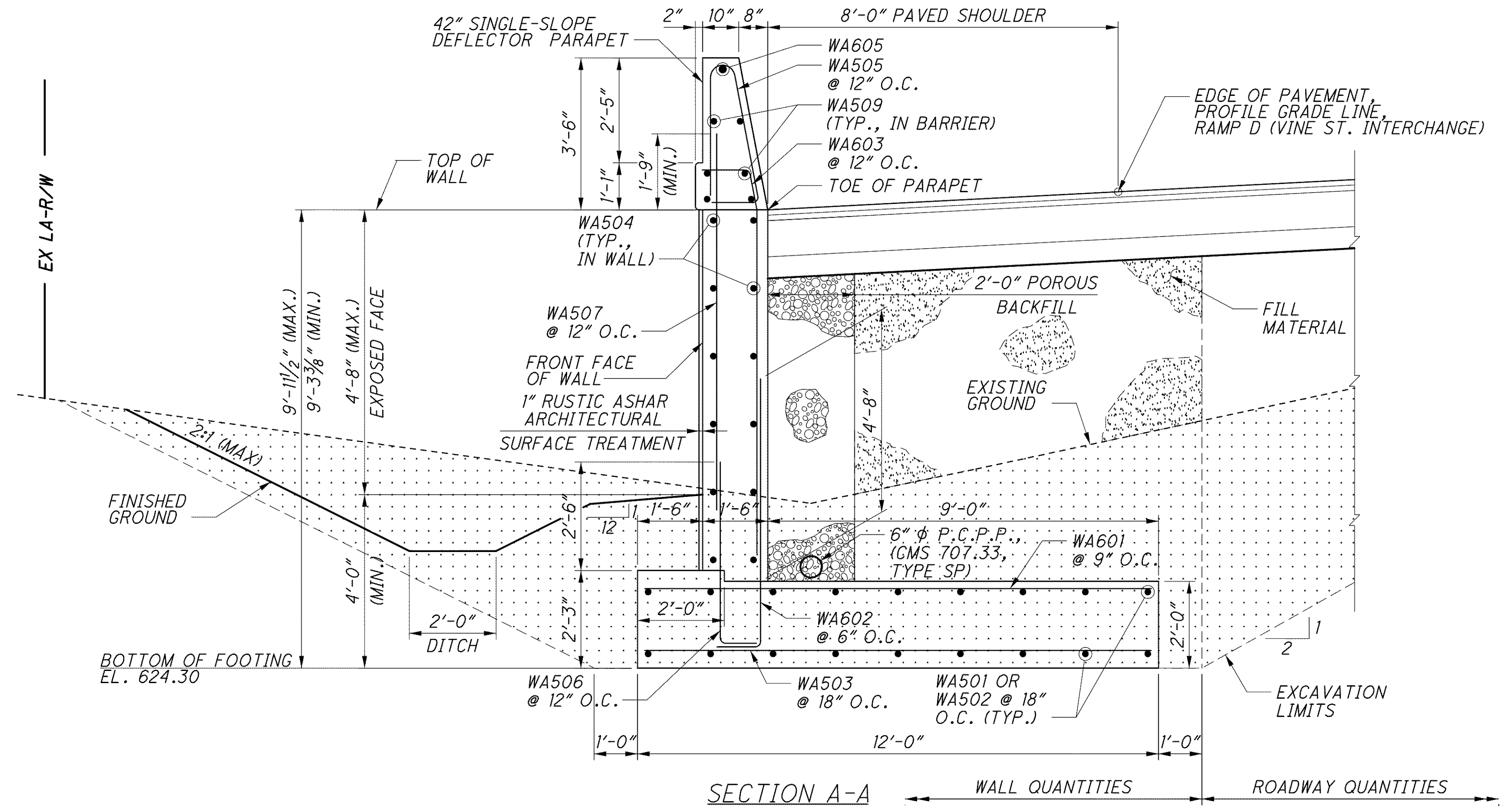
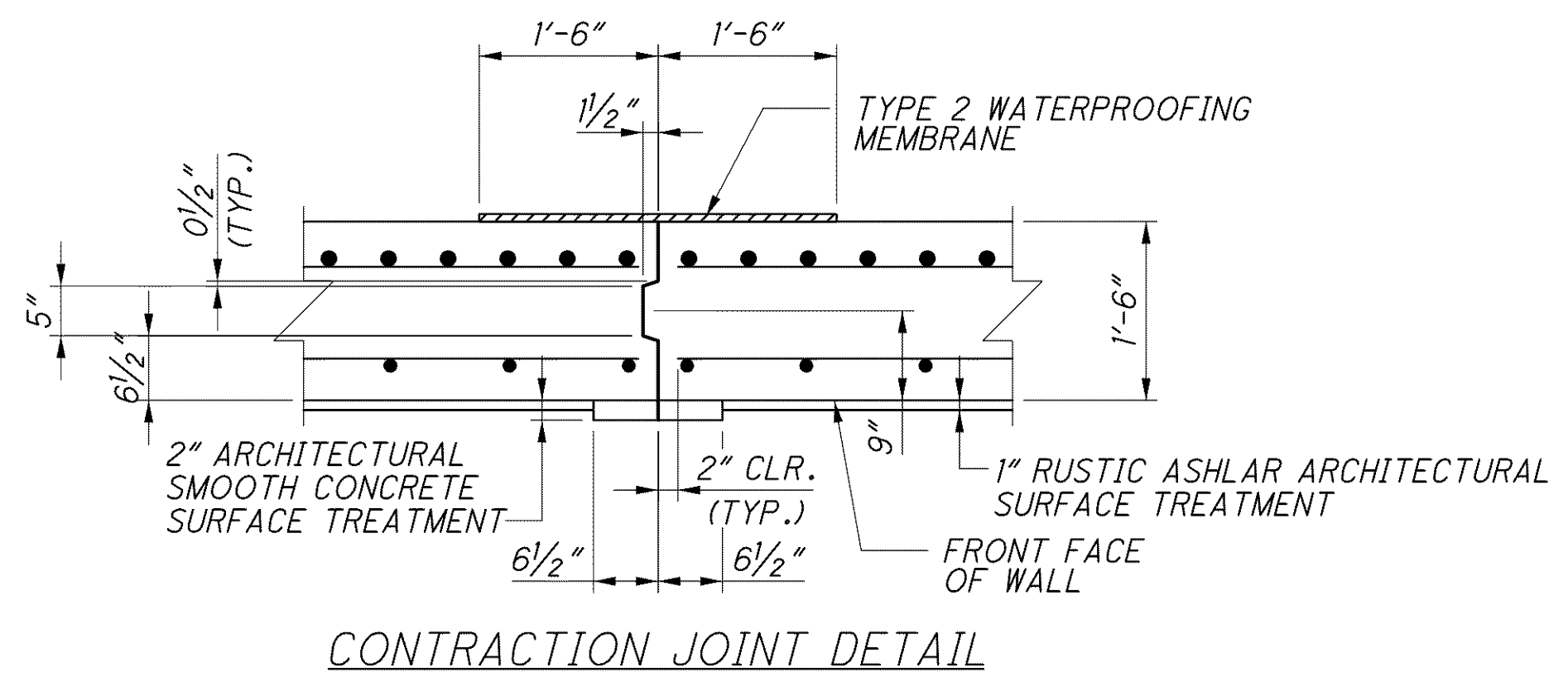


J:\LAK\13486\_structures\Wall\_001\_sheets\13486\_001GM002.dgn 03-JUL-2008 3:57PM imtn



MIN. LAP LENGTH, UNO	
#5 (COMPRESSION)	1'-7"
#5 (TENSION)	2'-5"
#6 (TENSION)	3'-10"

- NOTES:**
- FOR LOCATION OF SECTIONS A-A, B-B, C-C, D-D, AND E-E, SEE SHEET 2/4.
  - POROUS BACKFILL WITH FILTER FABRIC, 2 FEET THICK SHALL EXTEND UP TO THE PLANE OF THE SUBGRADE, AND LATERALLY TO THE END OF THE WALL.
  - FOR REINFORCING SCHEDULE, SEE SHEET 4/4.
  - FOR ADDITIONAL ARCHITECTURAL SURFACE TREATMENT DETAILS, SEE SHEET 4/4.
  - FOR ABBREVIATION LIST, SEE SHEET 1/4.

- LEGEND**
- UNCLASSIFIED EXCAVATION INCLUDED WITH WALL QUANTITIES FOR PAYMENT
  - FILL MATERIAL INCLUDED IN WALL QUANTITIES FOR PAYMENT