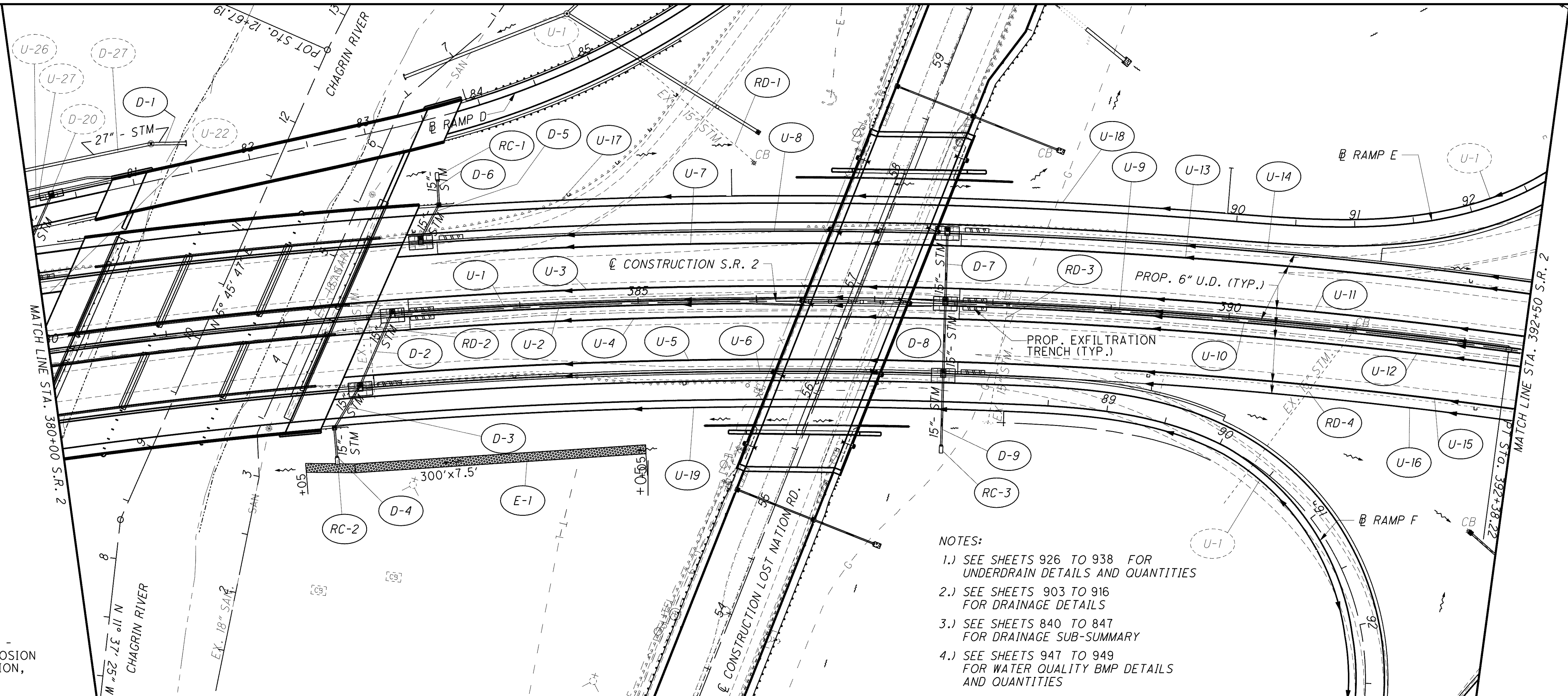


**DRAINAGE PLAN AND PROFILE**  
**STA. 380+00 TO STA. 392+50**

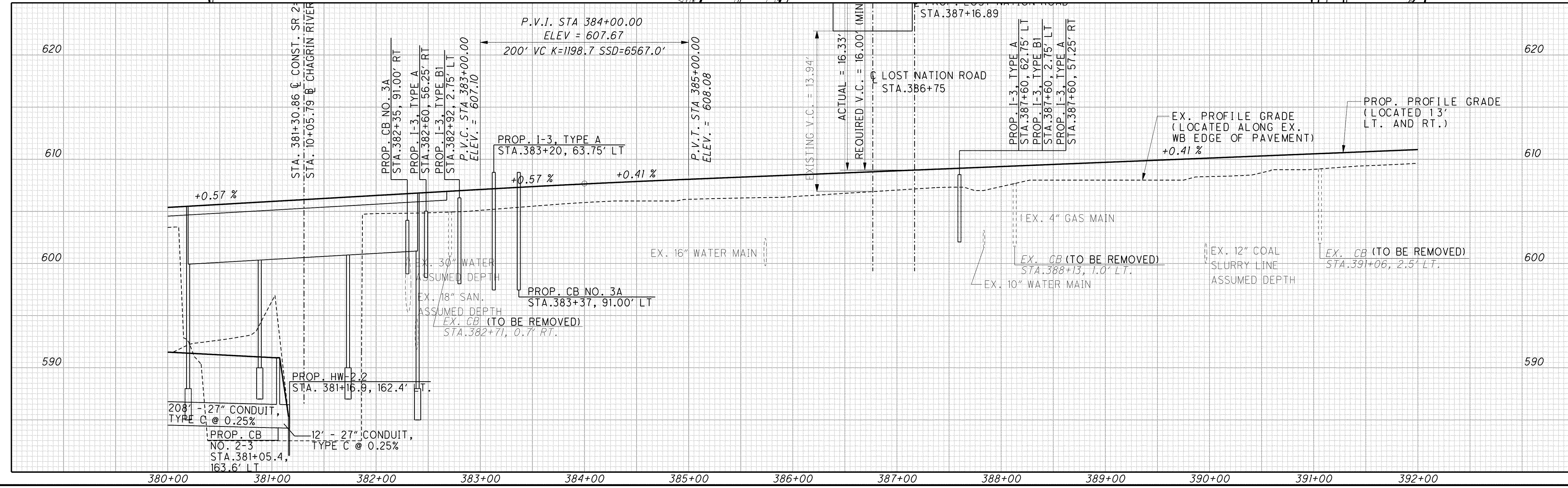
**LAK-2-3.32**



- NOTES:**
- 1.) SEE SHEETS 926 TO 938 FOR UNDERDRAIN DETAILS AND QUANTITIES
  - 2.) SEE SHEETS 903 TO 916 FOR DRAINAGE DETAILS
  - 3.) SEE SHEETS 840 TO 847 FOR DRAINAGE SUB-SUMMARY
  - 4.) SEE SHEETS 947 TO 949 FOR WATER QUALITY BMP DETAILS AND QUANTITIES

**LEGEND**

ITEM 670 - DITCH EROSION PROTECTION, 660.02



C:\Project\lak\13486\drainage\sheets\13486DP09.dgn 6/25/2008 1:03:29 PM pberdis