

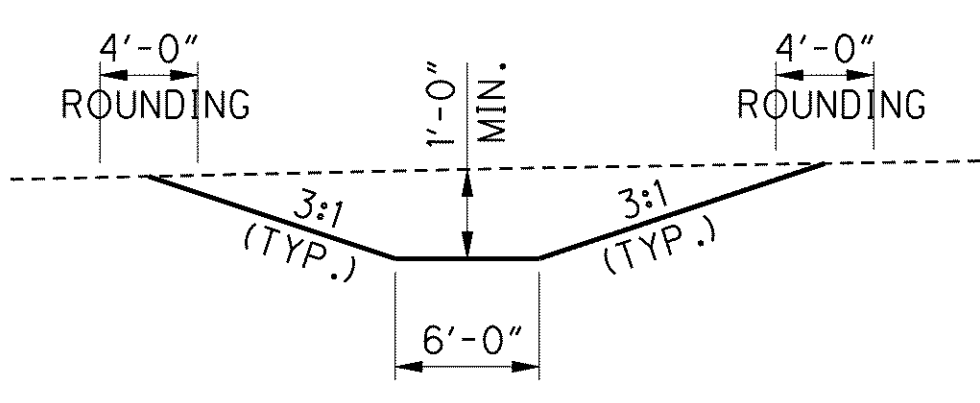
CALCULATED JLM
CHECKED PSB

LOST NATION RD. CULVERT & CHANNEL DETAIL
STA. 12+00 TO STA. 15+50

LAK-2-3.32

861
1679

CHANNEL HYDRAULIC DATA	
DRAINAGE AREA =	4.76 AC.
Q25 =	10.05 cfs
Q100 =	12.27 cfs
d25 =	0.48 FT
d100 =	0.53 FT
V25 =	2.37 fps
V100 =	2.51 fps

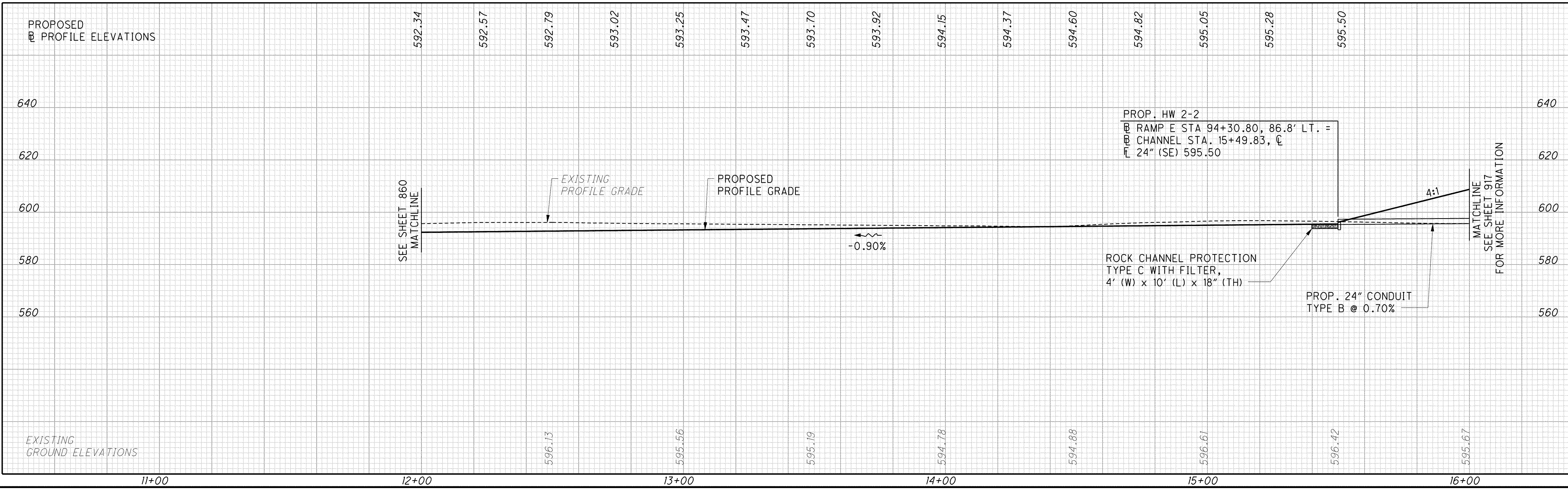
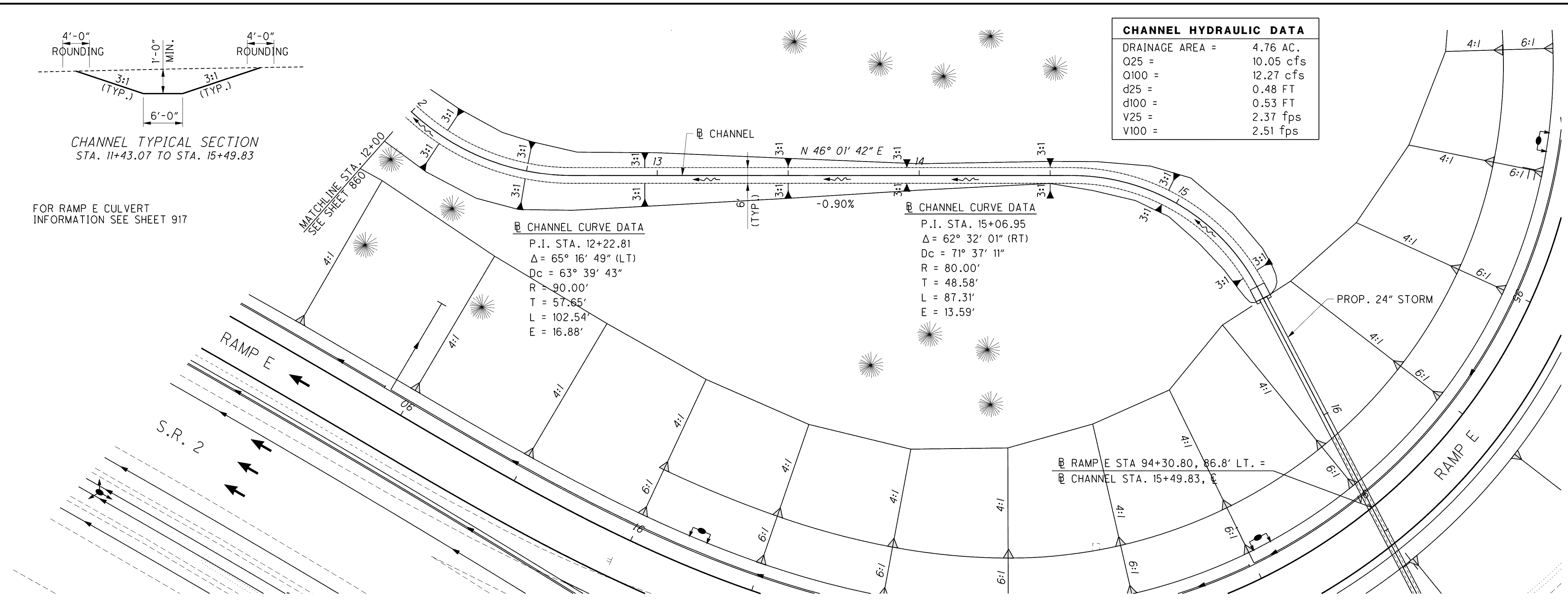


CHANNEL TYPICAL SECTION
STA. 11+43.07 TO STA. 15+49.83

FOR RAMP E CULVERT
INFORMATION SEE SHEET 917

CHANNEL CURVE DATA	
P.I. STA.	12+22.81
Δ	$65^\circ 16' 49''$ (LT)
Dc	$63^\circ 39' 43''$
R	90.00'
T	57.65'
L	102.54'
E	16.88'

CHANNEL CURVE DATA	
P.I. STA.	15+06.95
Δ	$62^\circ 32' 01''$ (RT)
Dc	$71^\circ 37' 11''$
R	80.00'
T	48.58'
L	87.31'
E	13.59'



C:\Project\lak\13486\drainage\sheets\13486DC08.dgn 6/24/2008 12:32:25 PM chaneman