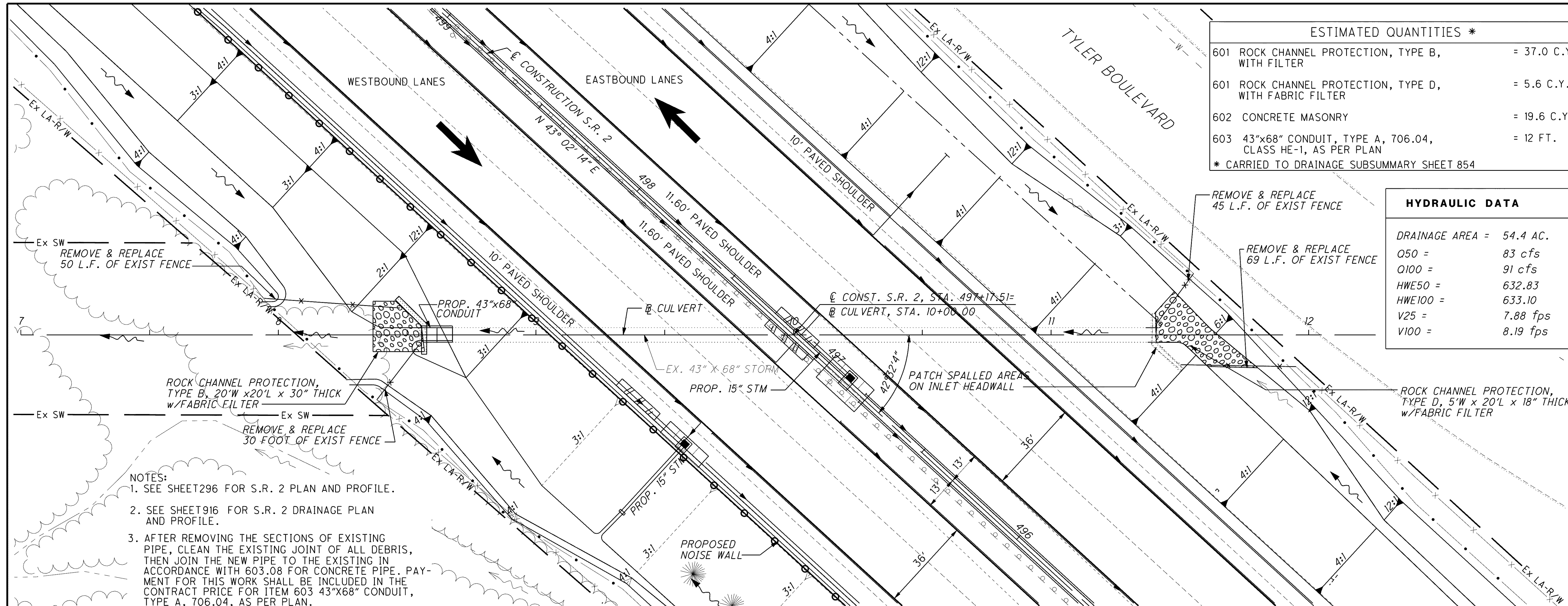


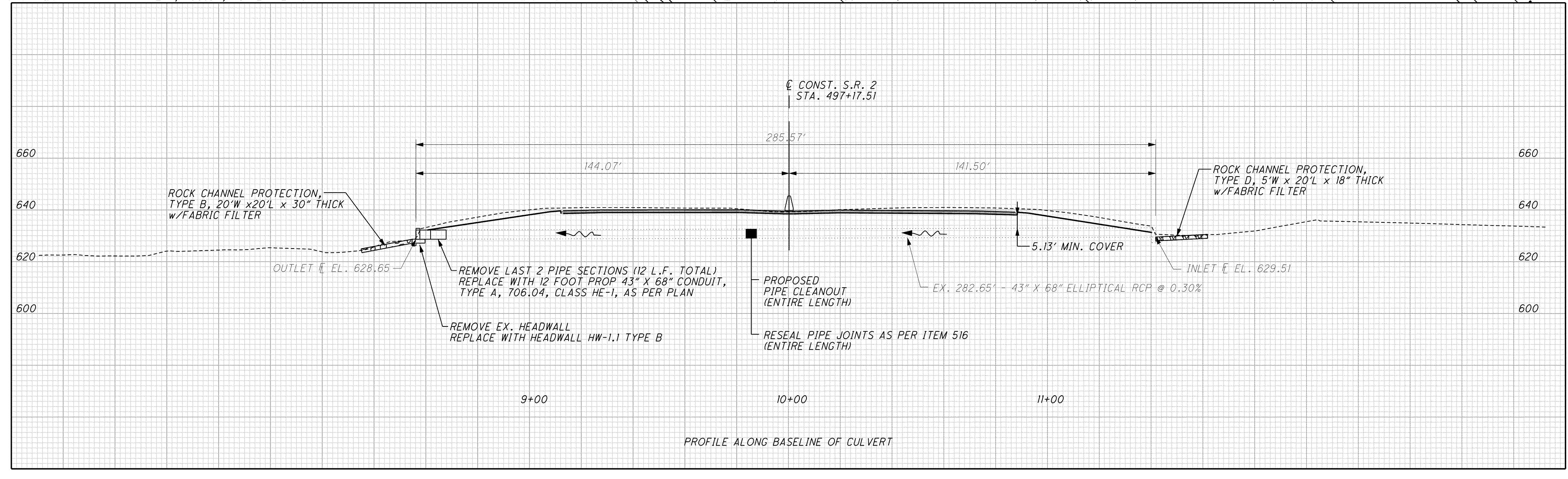
C:\Project\lak\13486\drainage\sheet\13486DC04.dgn 6/25/2008 2:34:04 PM pberdis



ESTIMATED QUANTITIES *	
601 ROCK CHANNEL PROTECTION, TYPE B, WITH FILTER	= 37.0 C.Y.
601 ROCK CHANNEL PROTECTION, TYPE D, WITH FABRIC FILTER	= 5.6 C.Y.
602 CONCRETE MASONRY	= 19.6 C.Y.
603 43"x68" CONDUIT, TYPE A, 706.04, CLASS HE-1, AS PER PLAN	= 12 FT.
* CARRIED TO DRAINAGE SUBSUMMARY SHEET 854	

HYDRAULIC DATA	
DRAINAGE AREA =	54.4 AC.
Q50 =	83 cfs
Q100 =	91 cfs
HWE50 =	632.83
HWE100 =	633.10
V25 =	7.88 fps
V100 =	8.19 fps

- NOTES:
1. SEE SHEET 296 FOR S.R. 2 PLAN AND PROFILE.
 2. SEE SHEET 916 FOR S.R. 2 DRAINAGE PLAN AND PROFILE.
 3. AFTER REMOVING THE SECTIONS OF EXISTING PIPE, CLEAN THE EXISTING JOINT OF ALL DEBRIS, THEN JOIN THE NEW PIPE TO THE EXISTING IN ACCORDANCE WITH 603.08 FOR CONCRETE PIPE. PAYMENT FOR THIS WORK SHALL BE INCLUDED IN THE CONTRACT PRICE FOR ITEM 603 43"x68" CONDUIT, TYPE A, 706.04, AS PER PLAN.



CALCULATED: JLM
 CHECKED: PSB
CULVERT DETAIL FOR LAK-2-0751
S.R. 2 AT 497+17.51
LAK-2-3.32
 858
 1679