

\\Akrn01\DATA\Civil\2004108\00\13486\roadway\sheets\13486GI413.dgn 6/16/2008 10:02:46 AM mmoellendick

CURVE NO.	RADIUS	Δ	TANGENT	EXTERNAL	MIDDLE ORDINATE	LONG CHORD	LENGTH OF CURVE
1	5'	52° 57' 10"	2.49	0.59	0.52	4.46	4.62
2	15'	70° 09' 46"	10.53	3.33	2.72	17.24	18.37
3	2'	155° 36' 41"	9.25	7.47	1.58	3.91	5.43
4	2'	165° 02' 51"	15.24	13.37	1.74	3.97	5.76

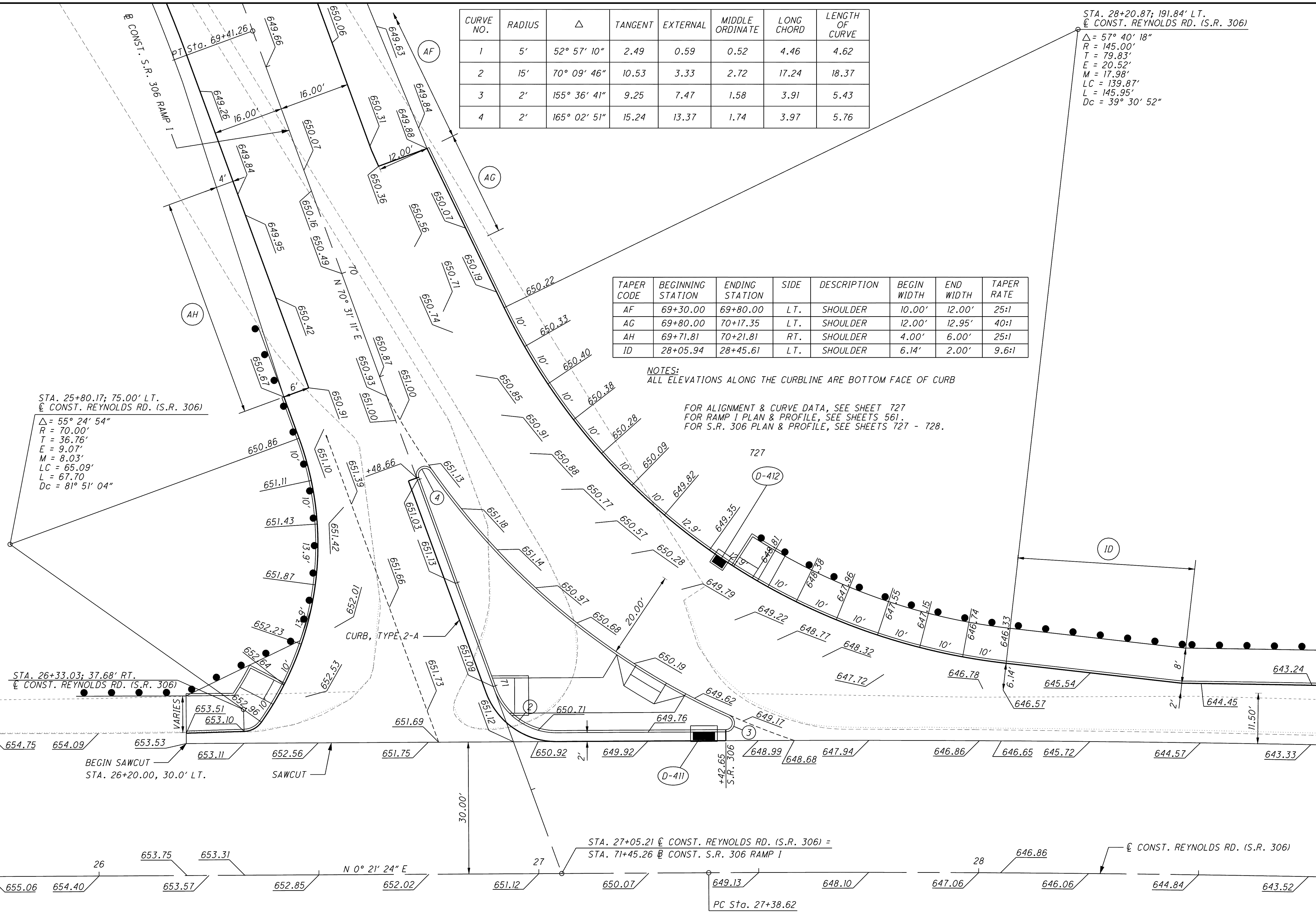
STA. 28+20.87; 191.84' LT.  
 @ CONST. REYNOLDS RD. (S.R. 306)  
 Δ = 57° 40' 18"  
 R = 145.00'  
 T = 79.83'  
 E = 20.52'  
 M = 17.98'  
 LC = 139.87'  
 L = 145.95'  
 Dc = 39° 30' 52"

TAPER CODE	BEGINNING STATION	ENDING STATION	SIDE	DESCRIPTION	BEGIN WIDTH	END WIDTH	TAPER RATE
AF	69+30.00	69+80.00	LT.	SHOULDER	10.00'	12.00'	25:1
AG	69+80.00	70+17.35	LT.	SHOULDER	12.00'	12.95'	40:1
AH	69+71.81	70+21.81	RT.	SHOULDER	4.00'	6.00'	25:1
ID	28+05.94	28+45.61	LT.	SHOULDER	6.14'	2.00'	9.6:1

NOTES:  
 ALL ELEVATIONS ALONG THE CURBLINE ARE BOTTOM FACE OF CURB

FOR ALIGNMENT & CURVE DATA, SEE SHEET 727  
 FOR RAMP I PLAN & PROFILE, SEE SHEETS 561.  
 FOR S.R. 306 PLAN & PROFILE, SEE SHEETS 727 - 728.

STA. 25+80.17; 75.00' LT.  
 @ CONST. REYNOLDS RD. (S.R. 306)  
 Δ = 55° 24' 54"  
 R = 70.00'  
 T = 36.76'  
 E = 9.07'  
 M = 8.03'  
 LC = 65.09'  
 L = 67.70'  
 Dc = 81° 51' 04"



CALCULATED MBM  
 CHECKED BSH

0 5 10 20  
 HORIZONTAL SCALE IN FEET

INTERSECTION DETAIL  
 REYNOLDS RD. / S.R. 306 RAMP I