



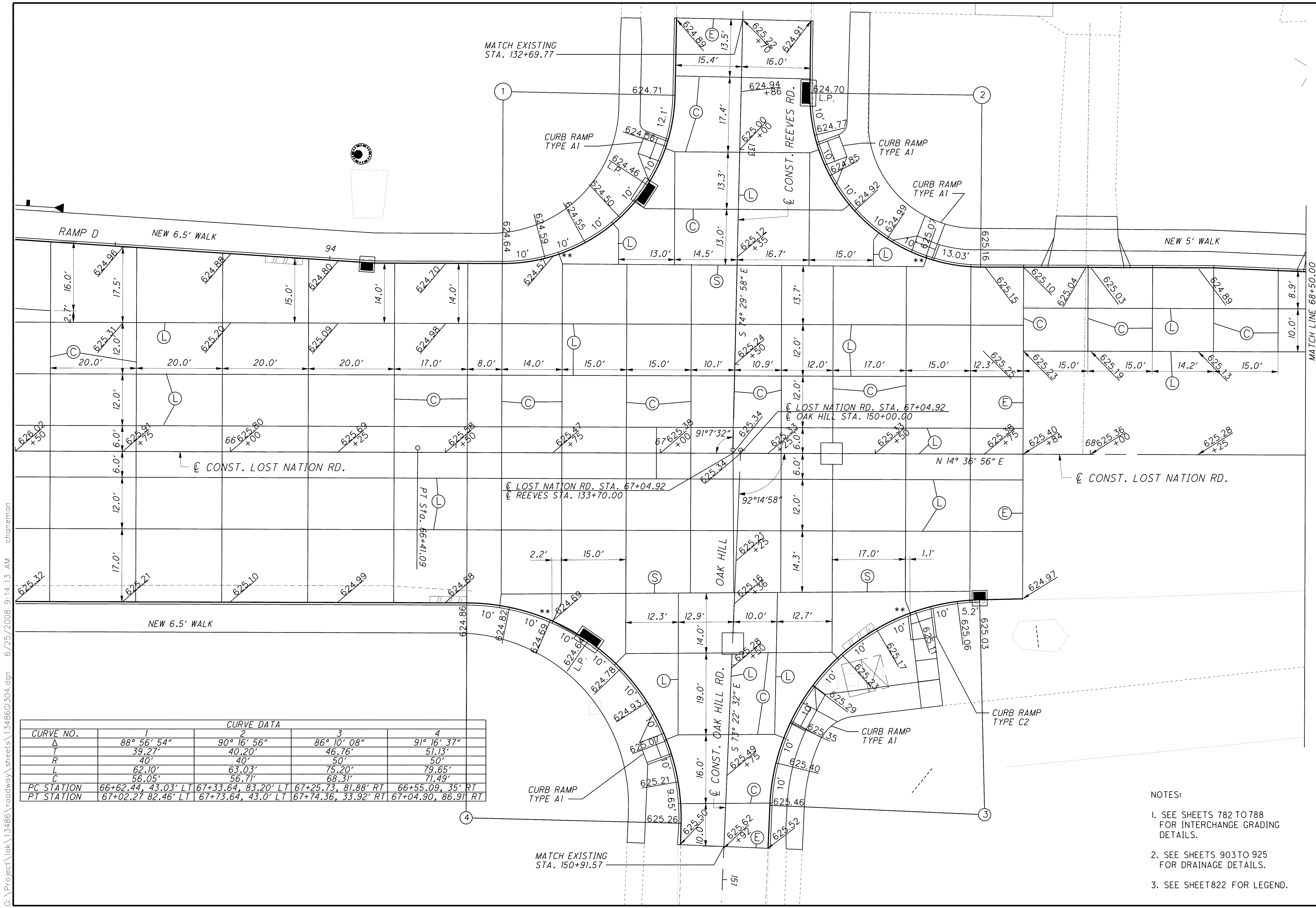
0 5 10
HORIZONTAL
SCALE IN FEET

CALCULATED TMA
CHECKED DES

INTERSECTION DETAIL
LOST NATION RD./ REEVES & OAK HILL

LAK-2-3.32

825
1679



CURVE NO.	1	2	3	4
Δ	88° 56' 54"	90° 16' 56"	86° 10' 08"	91° 16' 37"
T	39.27'	40.20'	46.76'	51.13'
R	40'	50'	50'	50'
L	62.10'	63.03'	75.20'	79.65'
C	56.05'	56.71'	68.31'	71.49'
PC STATION	66+62.44, 43.03' LT	67+33.64, 83.20' LT	67+25.73, 81.88' RT	66+55.09, 35' RT
PT STATION	67+02.27, 82.46' LT	67+73.64, 43.0' LT	67+74.36, 33.92' RT	67+04.90, 86.91' RT

- NOTES:
- SEE SHEETS 782 TO 788 FOR INTERCHANGE GRADING DETAILS.
 - SEE SHEETS 903 TO 925 FOR DRAINAGE DETAILS.
 - SEE SHEET 822 FOR LEGEND.

C:\Project\lak\13486\roadway\sheets\13486GI304.dgn 6/25/2008 9:14:13 AM chaneman