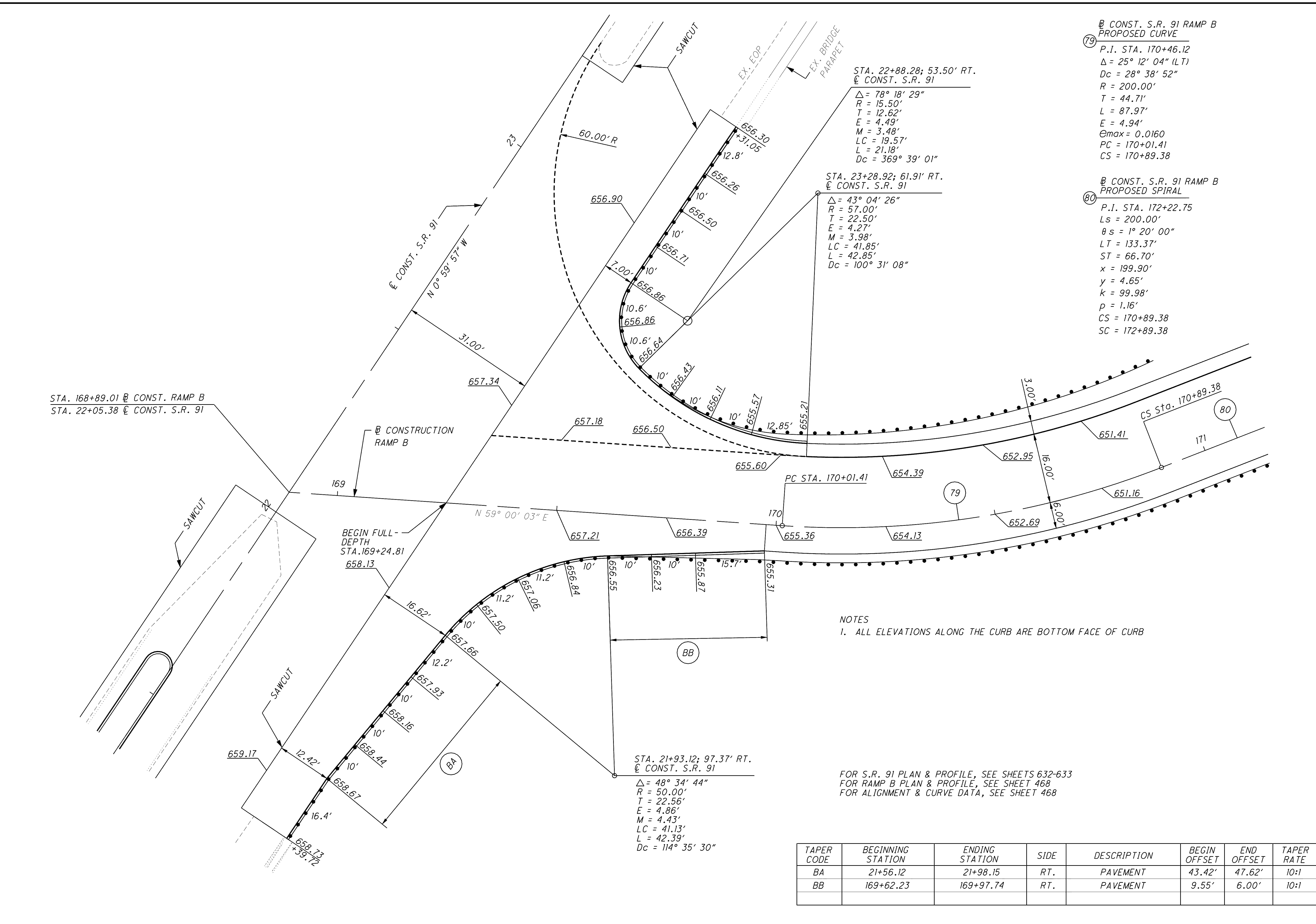


\\Akrn01\Data\Civil\2004108\00\13486\roadway\sheets\13486GI502.dgn 6/16/2008 10:03:28 AM mmoellendick

INTERSECTION DETAIL  
S.R. 91 / RAMP B

79 **CONST. S.R. 91 RAMP B  
PROPOSED CURVE**  
 P.I. STA. 170+46.12  
 $\Delta = 25^\circ 12' 04''$  (LT)  
 $Dc = 28^\circ 38' 52''$   
 $R = 200.00'$   
 $T = 44.71'$   
 $L = 87.97'$   
 $E = 4.94'$   
 $M = 3.48'$   
 $LC = 19.57'$   
 $L = 21.18'$   
 $Dc = 369^\circ 39' 01''$

80 **CONST. S.R. 91 RAMP B  
PROPOSED SPIRAL**  
 P.I. STA. 172+22.75  
 $Ls = 200.00'$   
 $\theta s = 1^\circ 20' 00''$   
 $LT = 133.37'$   
 $ST = 66.70'$   
 $x = 199.90'$   
 $y = 4.65'$   
 $k = 99.98'$   
 $p = 1.16'$   
 $CS = 170+89.38$   
 $SC = 172+89.38$



NOTES  
 1. ALL ELEVATIONS ALONG THE CURB ARE BOTTOM FACE OF CURB

FOR S.R. 91 PLAN & PROFILE, SEE SHEETS 632-633  
 FOR RAMP B PLAN & PROFILE, SEE SHEET 468  
 FOR ALIGNMENT & CURVE DATA, SEE SHEET 468

TAPER CODE	BEGINNING STATION	ENDING STATION	SIDE	DESCRIPTION	BEGIN OFFSET	END OFFSET	TAPER RATE
BA	21+56.12	21+98.15	RT.	PAVEMENT	43.42'	47.62'	10:1
BB	169+62.23	169+97.74	RT.	PAVEMENT	9.55'	6.00'	10:1

STA. 21+93.12; 97.37' RT.  
 @ CONST. S.R. 91  
 $\Delta = 48^\circ 34' 44''$   
 $R = 50.00'$   
 $T = 22.56'$   
 $E = 4.86'$   
 $M = 4.43'$   
 $LC = 41.13'$   
 $L = 42.39'$   
 $Dc = 114^\circ 35' 30''$

STA. 23+28.92; 61.91' RT.  
 @ CONST. S.R. 91  
 $\Delta = 43^\circ 04' 26''$   
 $R = 57.00'$   
 $T = 22.50'$   
 $E = 4.27'$   
 $M = 3.98'$   
 $LC = 41.85'$   
 $L = 42.85'$   
 $Dc = 100^\circ 31' 08''$

STA. 22+88.28; 53.50' RT.  
 @ CONST. S.R. 91  
 $\Delta = 78^\circ 18' 29''$   
 $R = 15.50'$   
 $T = 12.62'$   
 $E = 4.49'$   
 $M = 3.48'$   
 $LC = 19.57'$   
 $L = 21.18'$   
 $Dc = 369^\circ 39' 01''$

STA. 168+89.01 @ CONST. RAMP B  
 STA. 22+05.38 @ CONST. S.R. 91

BEGIN FULL-DEPTH  
 STA. 169+24.81