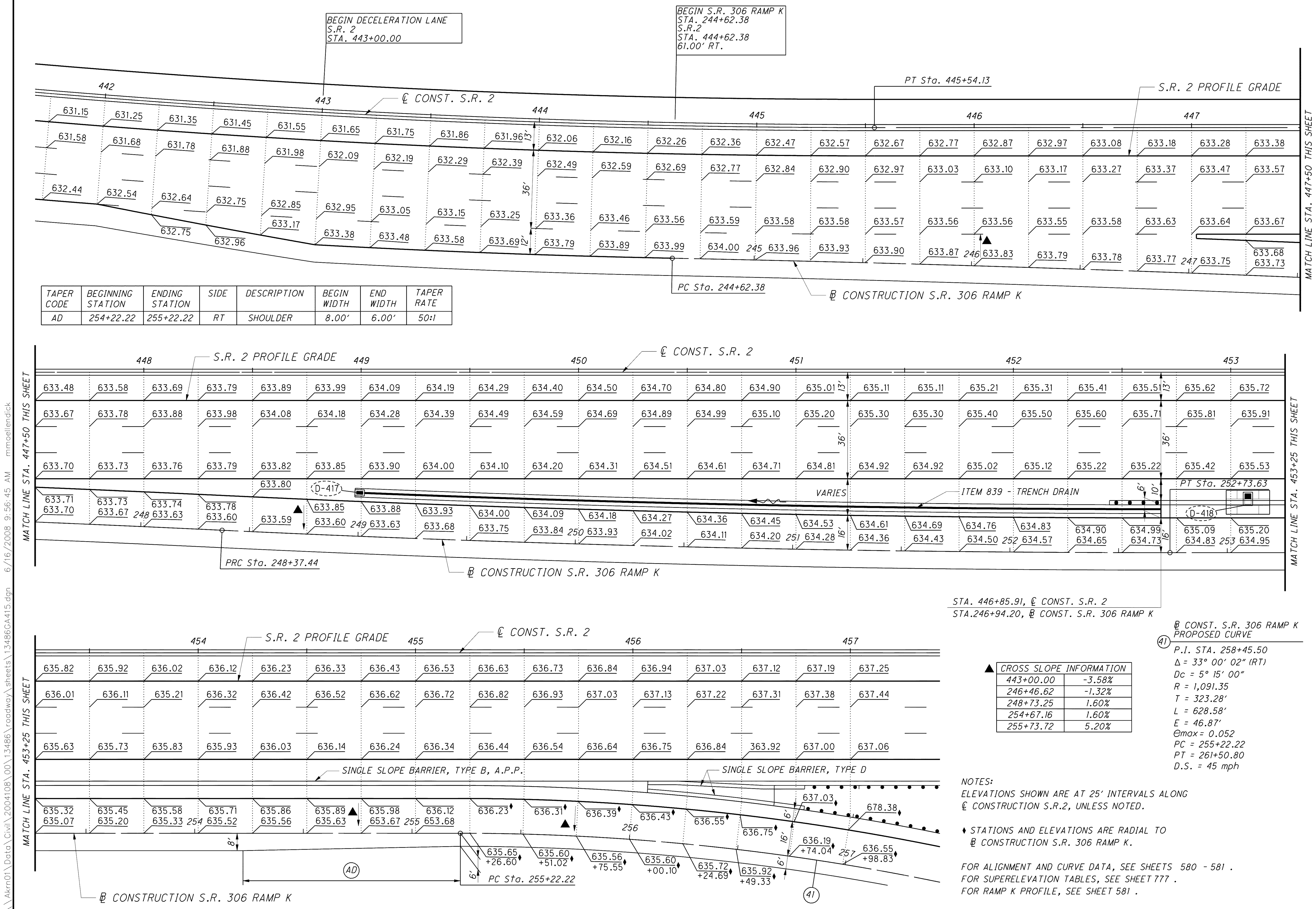


CALCULATED BY MBM
CHECKED BY MVJ

**RAMP GORE DETAILS
S.R. 306 - RAMP K AT S.R.2**

LAK-2-3.32

812
1679



TAPER CODE	BEGINNING STATION	ENDING STATION	SIDE	DESCRIPTION	BEGIN WIDTH	END WIDTH	TAPER RATE
AD	254+22.22	255+22.22	RT	SHOULDER	8.00'	6.00'	50:1

CROSS SLOPE INFORMATION	
443+00.00	-3.58%
246+46.62	-1.32%
248+73.25	1.60%
254+67.16	1.60%
255+73.72	5.20%

CONST. S.R. 306 RAMP K PROPOSED CURVE
 P.I. STA. 258+45.50
 $\Delta = 33^\circ 00' 02''$ (RT)
 $D_c = 5^\circ 15' 00''$
 $R = 1,091.35$
 $T = 323.28'$
 $L = 628.58'$
 $E = 46.87'$
 $e_{max} = 0.052$
 $PC = 255+22.22$
 $PT = 261+50.80$
 $D.S. = 45$ mph

NOTES:
 ELEVATIONS SHOWN ARE AT 25' INTERVALS ALONG
 CONSTRUCTION S.R.2, UNLESS NOTED.
 STATIONS AND ELEVATIONS ARE RADIAL TO
 CONSTRUCTION S.R. 306 RAMP K.
 FOR ALIGNMENT AND CURVE DATA, SEE SHEETS 580 - 581 .
 FOR SUPERELEVATION TABLES, SEE SHEET 777 .
 FOR RAMP K PROFILE, SEE SHEET 581 .

\\Akrn01\Data\Civil\2004108\00\13486\roadway\sheet\13486GA415.dgn 6/16/2008 9:56:45 AM mmoellendick

MATCH LINE STA. 447+50 THIS SHEET

MATCH LINE STA. 453+25 THIS SHEET

MATCH LINE STA. 447+50 THIS SHEET