

CONST. LOST NATION ROAD PROP. CURVE DATA

P.I. STA. 62+77.03
 $\Delta = 10^\circ 45' 50''$ (RT)
 $D_c = 3^\circ 00' 00''$
 $R = 1,909.86'$
 $T = 179.93'$
 $L = 358.79'$
 $E = 8.46'$
 $e_{max} = \text{NONE}$
 $PC = 60+97.10$
 $PT = 64+55.90$
 $D.S. = 40 \text{ mph}$

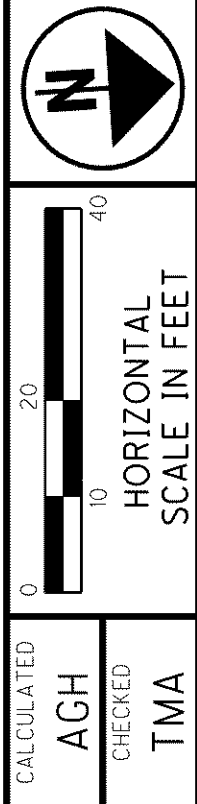
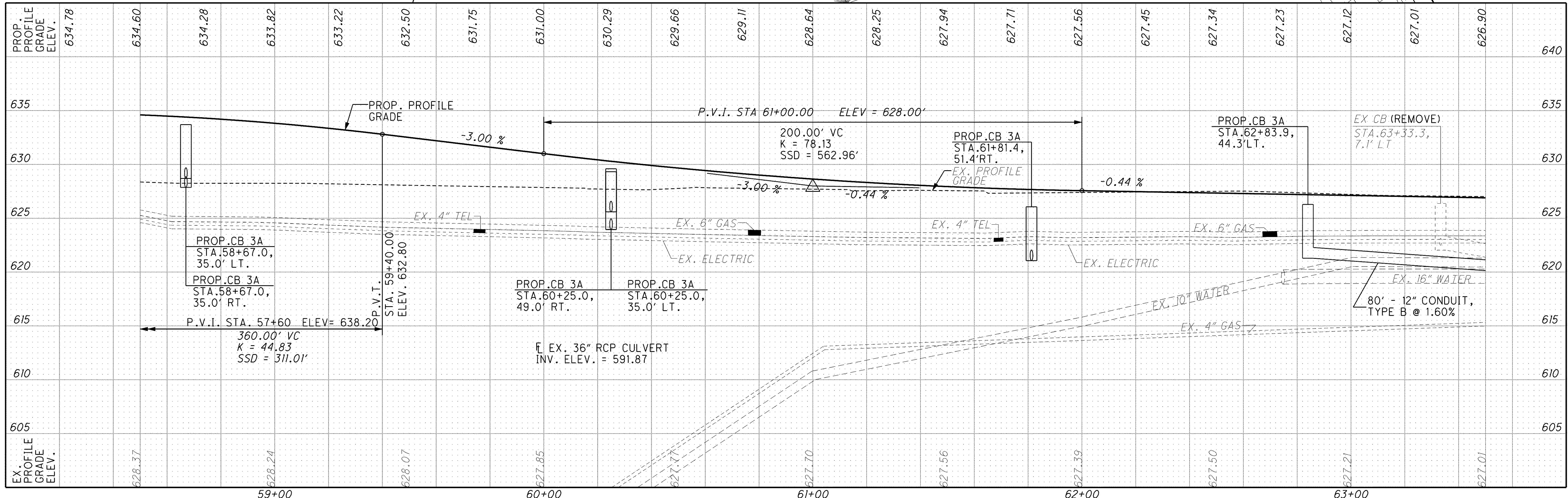
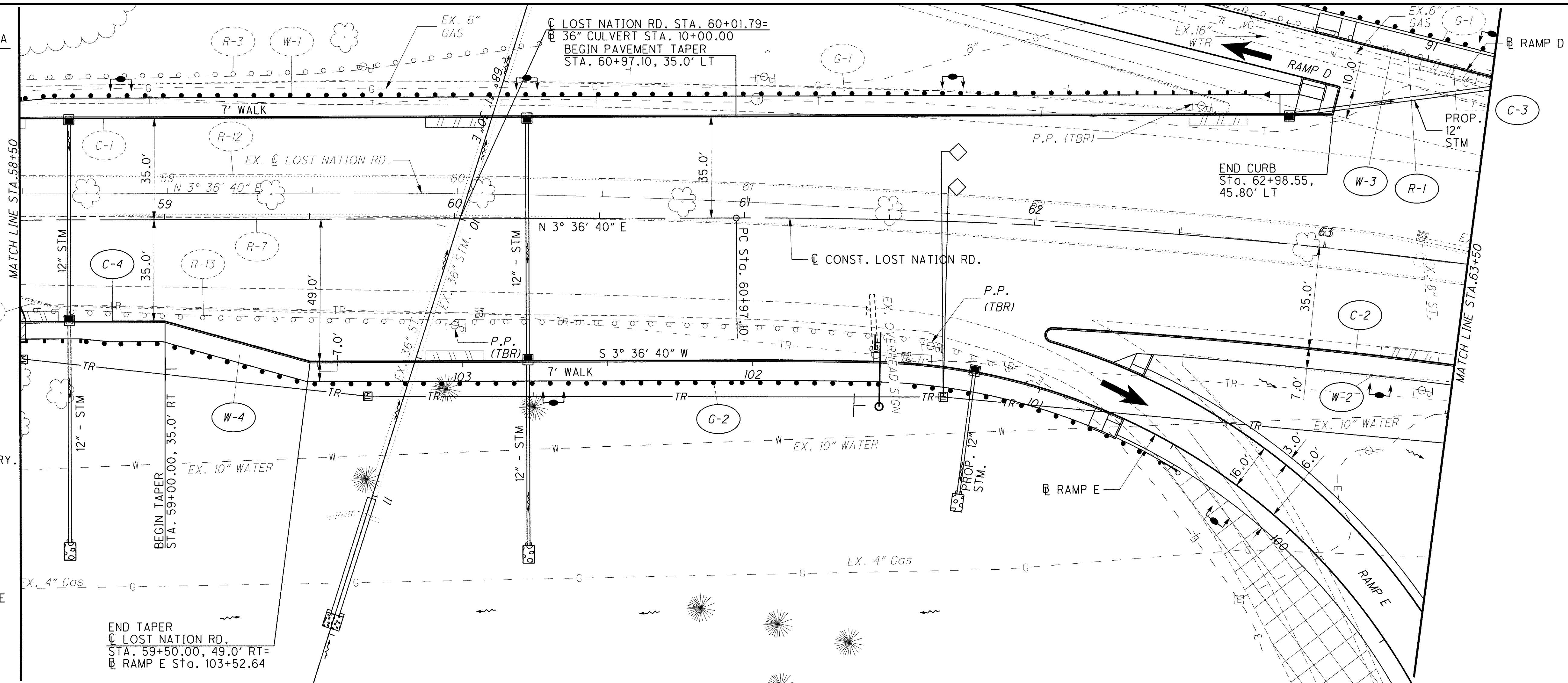
NOTES:

- SEE SHEETS 822 TO 829 FOR INTERSECTION AND PAVEMENT JOINT DETAILS.
- SEE SHEETS 897 TO 902 FOR DRAINAGE PLAN AND PROFILES.
- SEE SHEETS 920 TO 925 FOR DRAINAGE DETAILS.
- SEE SHEETS 248 TO 252 FOR ROADWAY SUBSUMMARY.

LEGEND

PAVEMENT REMOVED

P.P. (TBR) - POWER POLE TO BE RELOCATED BY OTHERS



PLAN AND PROFILE - LOST NATION RD.
STA. 58+50.00 TO STA. 63+50.00

LAK-2-3.32

692
 1679

o:\project\lak\13486\roadway\sheets\13486GP412.dgn 7/11/2008 8:03:39 AM dshamer