

**SR 2 CURV DATA**

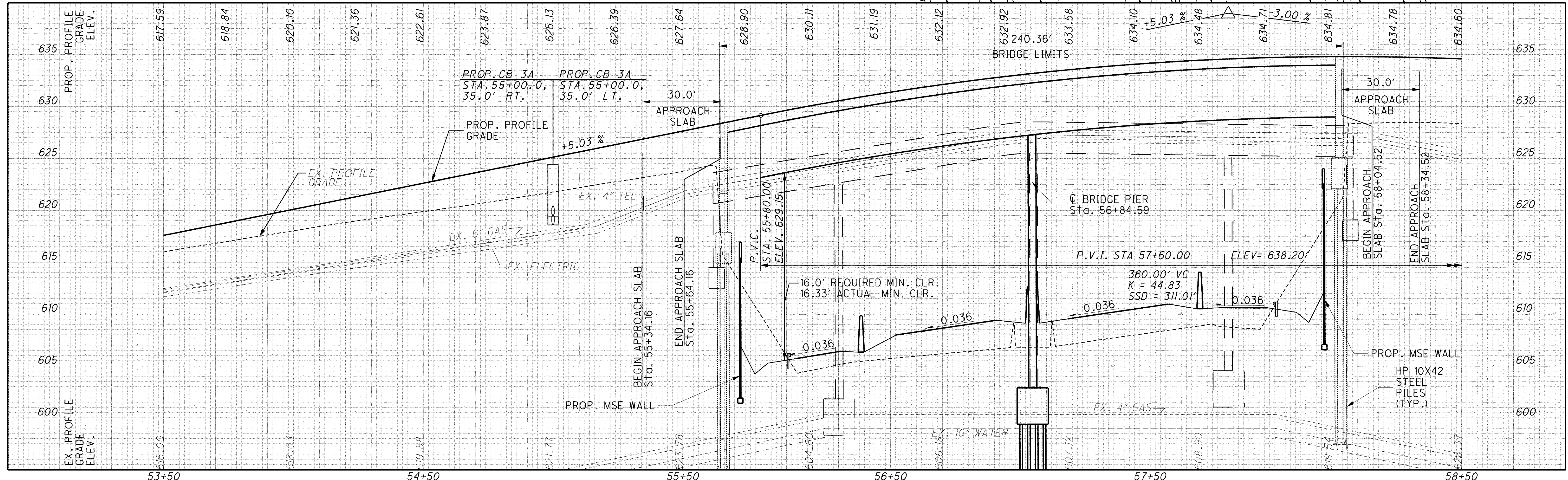
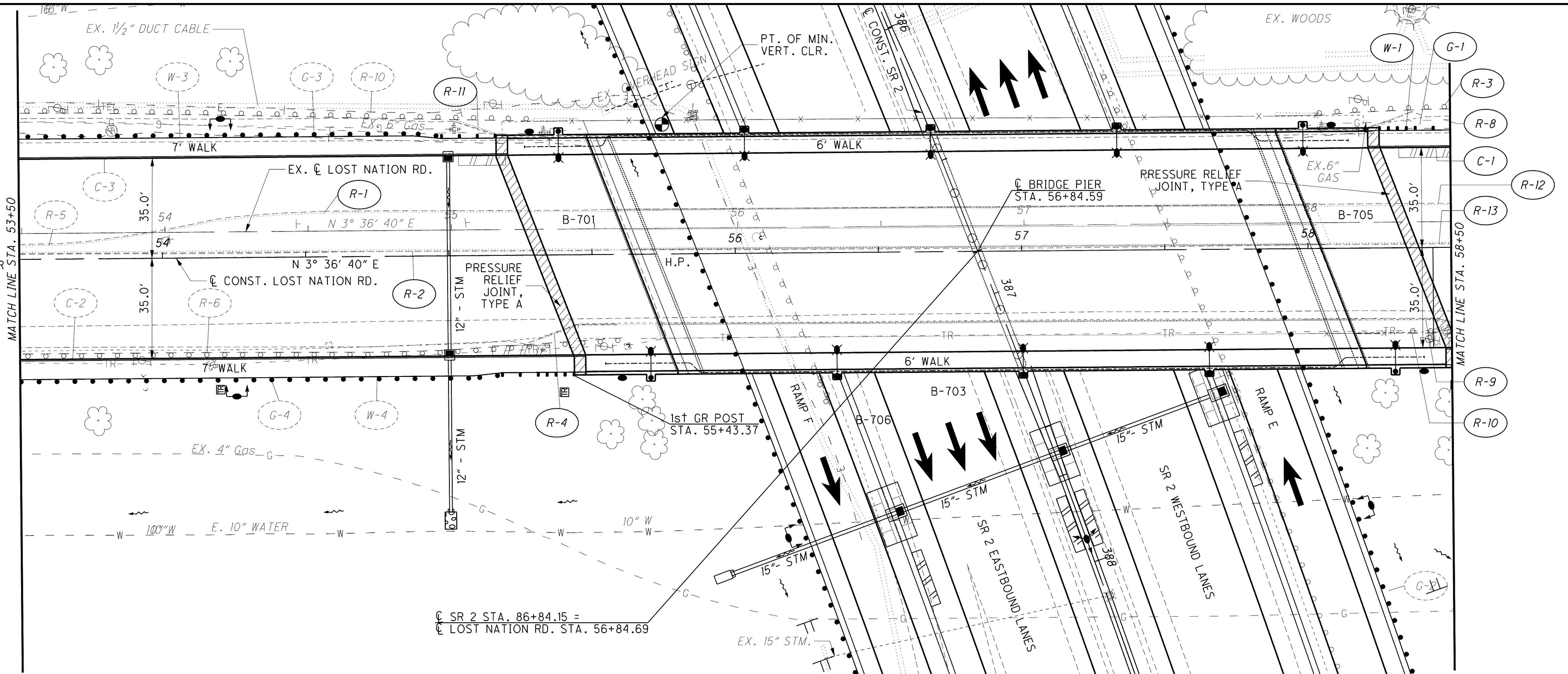
P.I. STA. 381+42.54  
 $\Delta = 27^\circ 57' 37''$  (RT)  
 $D_c = 1^\circ 15' 00''$   
 $R = 4,583.66'$   
 $T = 1,141.15$   
 $L = 2,236.83'$   
 $E = 139.92'$   
 $e_{max} = 0.036$

**NOTES:**

- SEE SHEETS 920 TO 925 FOR DRAINAGE PLAN AND PROFILES.
- SEE SHEETS 920 TO 925 FOR DRAINAGE DETAILS.
- SEE SHEETS 248 TO 252 FOR ROADWAY SUBSUMMARY.
- SEE SHEETS 1547 TO 1590 FOR BRIDGE PLANS.
- SEE SHEET 713 FOR ST. CLAIR ST. PLAN AND PROFILE

**LEGEND**

P.P. (TBR) - LIGHT POLE TO BE RELOCATED BY OTHERS



CALCULATED: AGH  
 CHECKED: TMA

**PLAN AND PROFILE - LOST NATION RD.**  
**STA. 53+50.00 TO 58+50.00**

**LAK-2-3.32**

691  
1679

o:\project\lak\13486\roadway\sheets\13486GP411.dgn 7/11/2008 8:03:25 AM dshamer