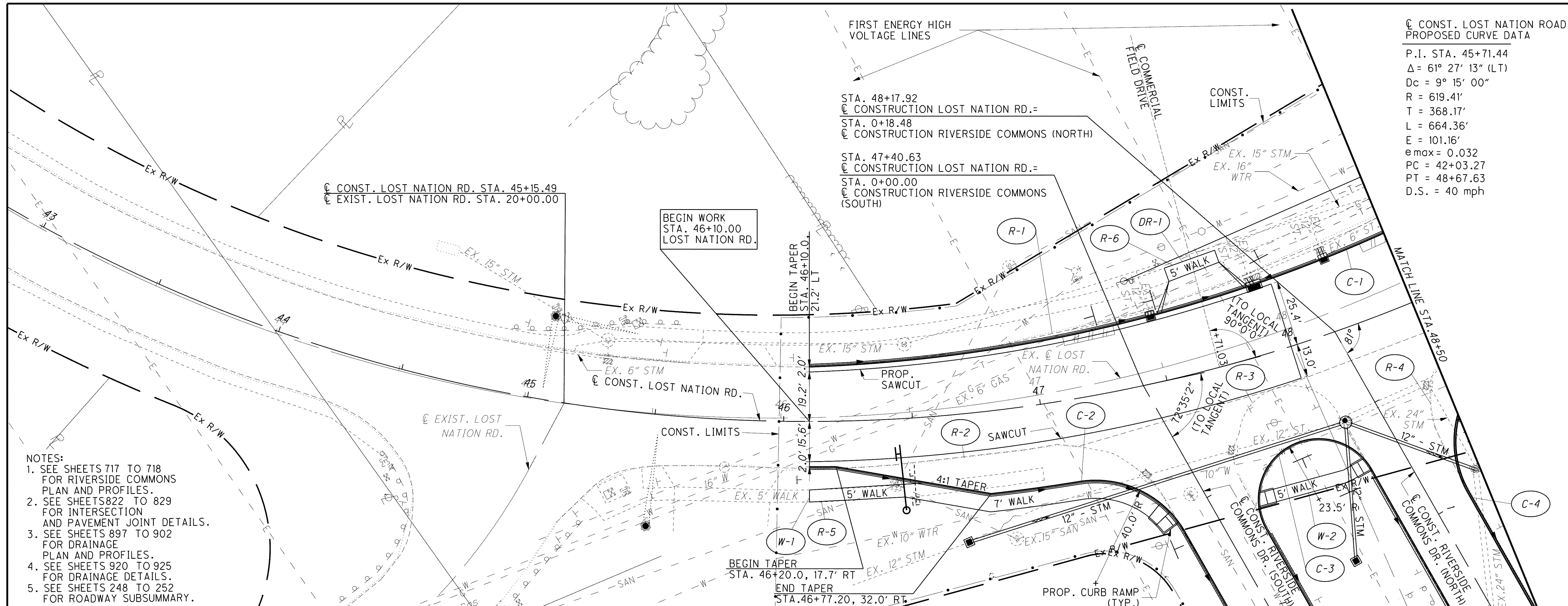


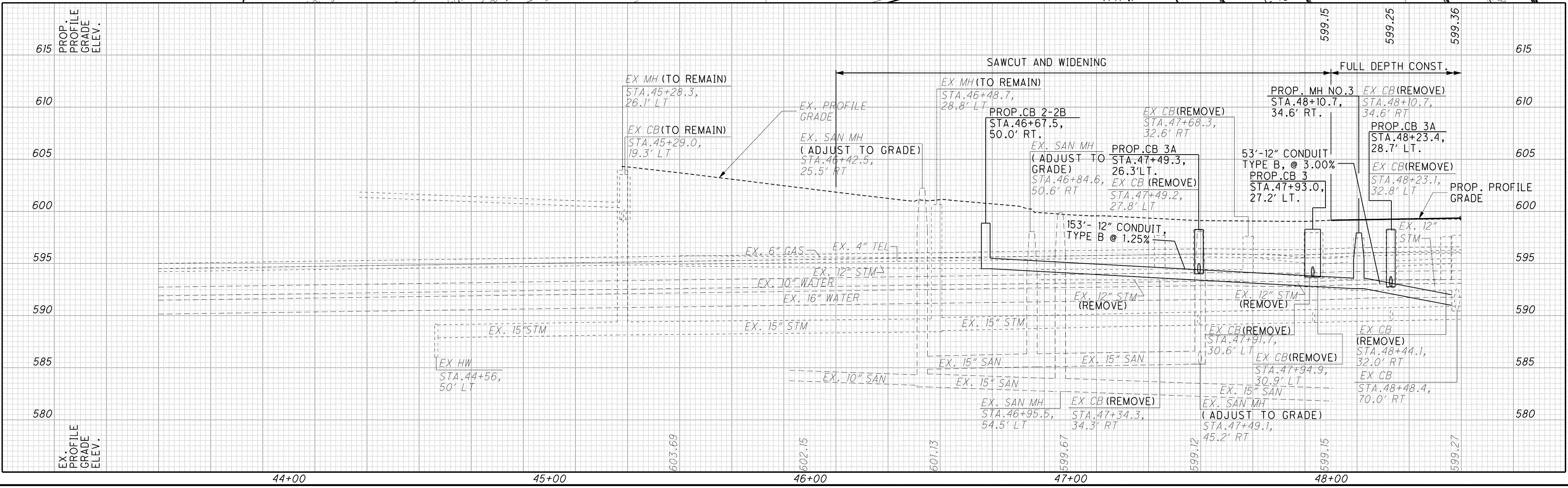
g:\project\lak\13486\roadway\sheets\13486GP409.dgn 7/11/2008 8:03:01 AM dshamer



- NOTES:
1. SEE SHEETS 717 TO 718 FOR RIVERSIDE COMMONS PLAN AND PROFILES.
  2. SEE SHEETS 822 TO 829 FOR INTERSECTION AND PAVEMENT JOINT DETAILS.
  3. SEE SHEETS 897 TO 902 FOR DRAINAGE PLAN AND PROFILES.
  4. SEE SHEETS 920 TO 925 FOR DRAINAGE DETAILS.
  5. SEE SHEETS 248 TO 252 FOR ROADWAY SUBSUMMARY.

CONST. LOST NATION ROAD  
PROPOSED CURVE DATA

P.I. STA. 45+71.44  
 $\Delta = 61^\circ 27' 13''$  (LT)  
 $D_c = 9^\circ 15' 00''$   
 $R = 619.41'$   
 $T = 368.17'$   
 $L = 664.36'$   
 $E = 101.16'$   
 $e_{max} = 0.032$   
 $PC = 42+03.27$   
 $PT = 48+67.63$   
 $D.S. = 40$  mph



HORIZONTAL SCALE IN FEET

CALCULATED: AGH  
 CHECKED: TMA

**PLAN AND PROFILE- LOST NATION RD.  
 BEGIN TO STA. 48+50.00**

**LAK-2-3.32**

689  
1679