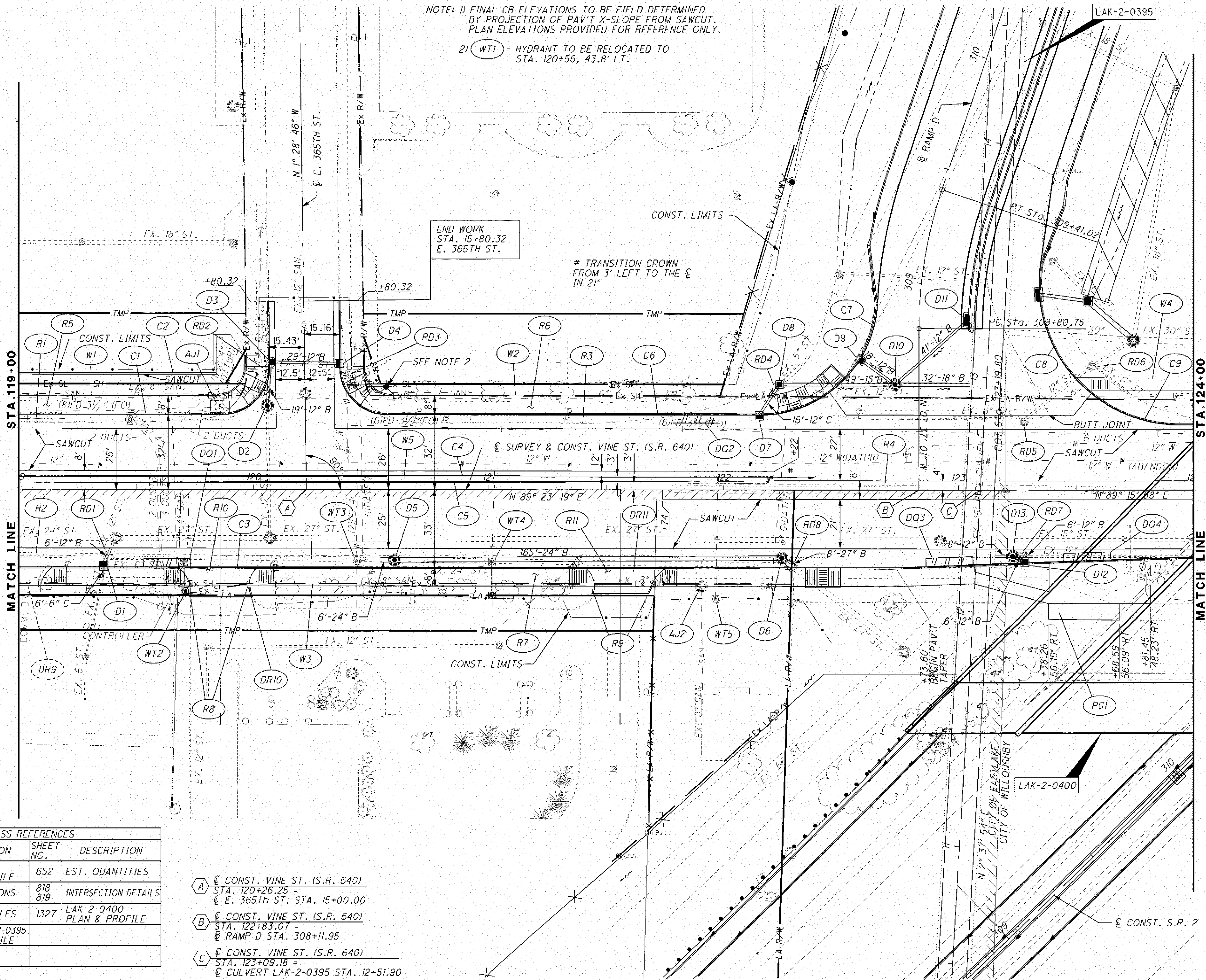


NOTE: 1) FINAL CB ELEVATIONS TO BE FIELD DETERMINED BY PROJECTION OF PAV'T X-SLOPE FROM SAWCUT. PLAN ELEVATIONS PROVIDED FOR REFERENCE ONLY.

2) WT1 - HYDRANT TO BE RELOCATED TO STA. 120+56, 43.8' LT.

END WORK STA. 15+80.32 E. 365TH ST.

TRANSITION CROWN FROM 3' LEFT TO THE C IN 21'

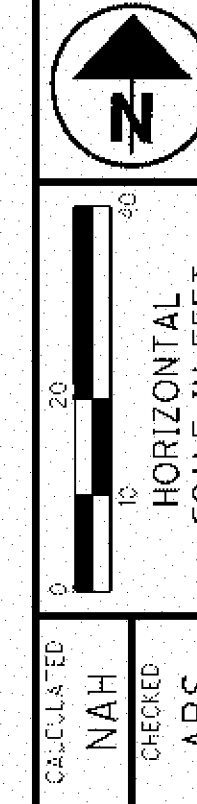


MATCH LINE STA. 119+00

MATCH LINE STA. 124+00

CROSS REFERENCES			
SHEET NO.	DESCRIPTION	SHEET NO.	DESCRIPTION
489	RAMP 'D' PLAN & PROFILE	652	EST. QUANTITIES
665	CROSS SECTIONS	818 819	INTERSECTION DETAILS
667	STORM PROFILES	1327	LAK-2-0400 PLAN & PROFILE
1316	CULVERT LAK-2-0395 PLAN & PROFILE		

- A C CONST. VINE ST. (S.R. 640)
STA. 120+26.25 =
E. 365th ST. STA. 15+00.00
- B C CONST. VINE ST. (S.R. 640)
STA. 122+83.01 =
B RAMP D STA. 308+11.95
- C C CONST. VINE ST. (S.R. 640)
STA. 123+09.18 =
C CULVERT LAK-2-0395 STA. 12+51.90



PLAN - VINE STREET (S.R. 640)
STA. 119+00.00 TO STA. 124+00.00

LAK-2-3.32

650
1679

c:\project\lak\13486\roadway\sheets\13486GP402.dgn 6/23/2008 1:04:17 PM rcdenic