

\\Akrn01\DATA\Civil\2004108\00\13486\roadway\sheet\13486CP505.dgn 6/16/2008 10:15:44 AM mmoeilendick

D-507
 STA. 32+00.00, 34.00' RT. (S.R. 91)
 PROP. CB NO. 6
 T/G ELEV. = 642.75'
 F 12" (E) = 638.92'
 F 6" UD (S) = 639.92'

D-508
 STA. 32+00.00, 40.00' RT. (S.R. 91)
 PROP. MH NO. 3
 T/G ELEV. = 642.61'
 F 12" (W) = 638.83'
 F 12" (S) = 638.83'
 F 12" (N) = 634.37'
 F 12" (E) = 634.37'

D-509
 STA. 33+74.75, 34.00' RT. (S.R. 91)
 PROP. CB NO. 6
 T/G ELEV. = 640.91'
 F 12" (E) = 637.08'
 F 6" UD (S) = 638.08'

D-510
 STA. 33+74.75, 40.00' RT. (S.R. 91)
 PROP. MH NO. 3
 T/G ELEV. = 640.77'
 F 12" (W) = 636.99'
 F 12" (S) = 636.99'

D-513
 STA. 32+00.00, 46.00' LT. (S.R. 91)
 PROP. CB NO. 6
 T/G ELEV. = 642.39'
 F 12" (W) = 638.55'
 F 6" UD (S) = 639.55'

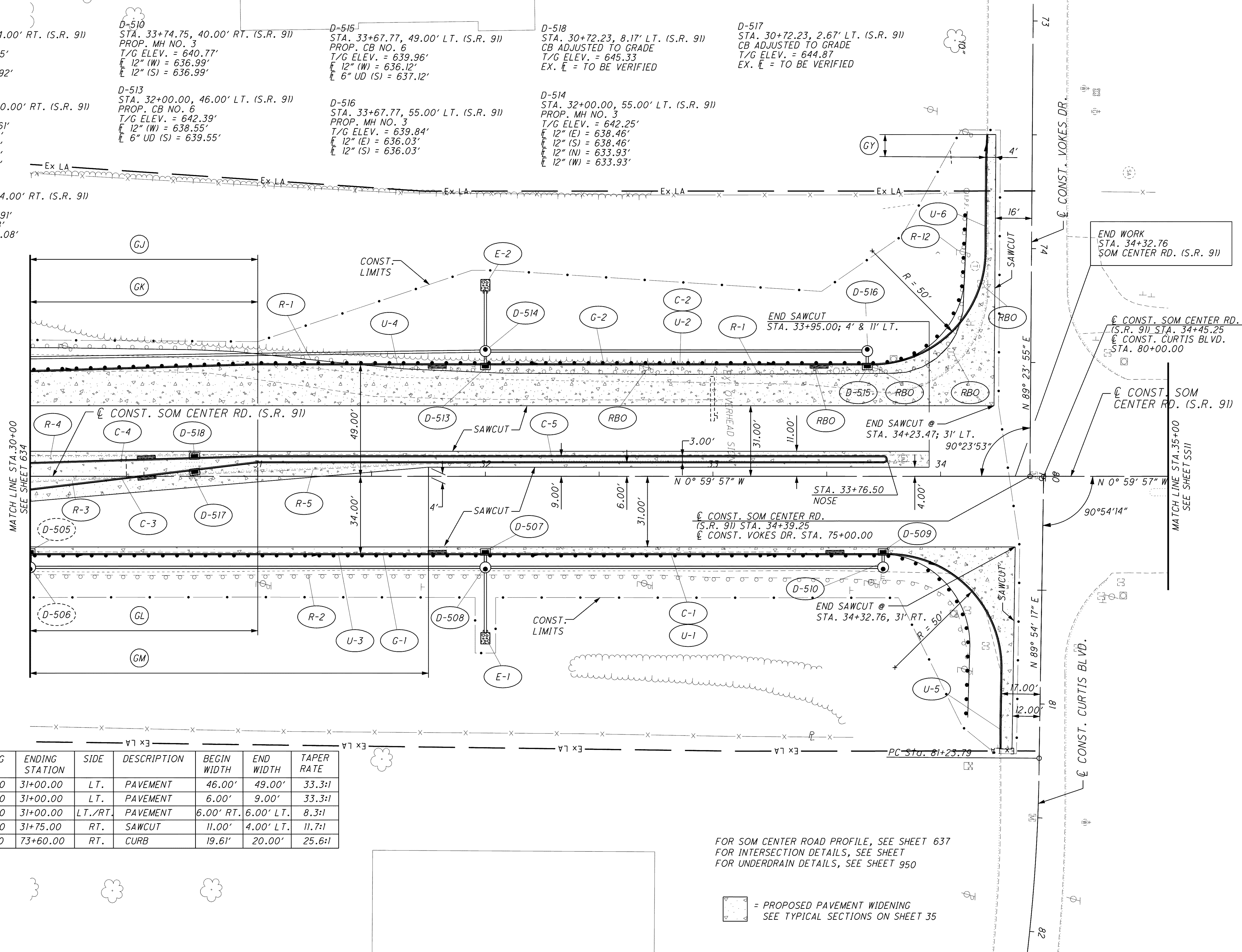
D-515
 STA. 33+67.77, 49.00' LT. (S.R. 91)
 PROP. CB NO. 6
 T/G ELEV. = 639.96'
 F 12" (W) = 636.12'
 F 6" UD (S) = 637.12'

D-516
 STA. 33+67.77, 55.00' LT. (S.R. 91)
 PROP. MH NO. 3
 T/G ELEV. = 639.84'
 F 12" (E) = 636.03'
 F 12" (S) = 636.03'

D-518
 STA. 30+72.23, 8.17' LT. (S.R. 91)
 CB ADJUSTED TO GRADE
 T/G ELEV. = 645.33
 EX. F = TO BE VERIFIED

D-514
 STA. 32+00.00, 55.00' LT. (S.R. 91)
 PROP. MH NO. 3
 T/G ELEV. = 642.25'
 F 12" (E) = 638.46'
 F 12" (S) = 638.46'
 F 12" (N) = 633.93'
 F 12" (W) = 633.93'

D-517
 STA. 30+72.23, 2.67' LT. (S.R. 91)
 CB ADJUSTED TO GRADE
 T/G ELEV. = 644.87
 EX. F = TO BE VERIFIED



TAPER CODE	BEGINNING STATION	ENDING STATION	SIDE	DESCRIPTION	BEGIN WIDTH	END WIDTH	TAPER RATE
GJ	30+00.00	31+00.00	LT.	PAVEMENT	46.00'	49.00'	33.3:1
GK	30+00.00	31+00.00	LT.	PAVEMENT	6.00'	9.00'	33.3:1
GL	30+00.00	31+00.00	LT./RT.	PAVEMENT	6.00' RT.	6.00' LT.	8.3:1
GM	30+00.00	31+75.00	RT.	SAWCUT	11.00'	4.00' LT.	11.7:1
GY	73+50.00	73+60.00	RT.	CURB	19.61'	20.00'	25.6:1

FOR SOM CENTER ROAD PROFILE, SEE SHEET 637
 FOR INTERSECTION DETAILS, SEE SHEET
 FOR UNDERDRAIN DETAILS, SEE SHEET 950

= PROPOSED PAVEMENT WIDENING
 SEE TYPICAL SECTIONS ON SHEET 35

SCALE IN FEET

20
10
0

HORIZONTAL

CALCULATED: CML
 CHECKED: MVJ

PLAN - SOM CENTER RD. (S.R. 91)
STA. 30+00.00 TO STA. 35+00.00

LAK-2-3.32

636
 1679