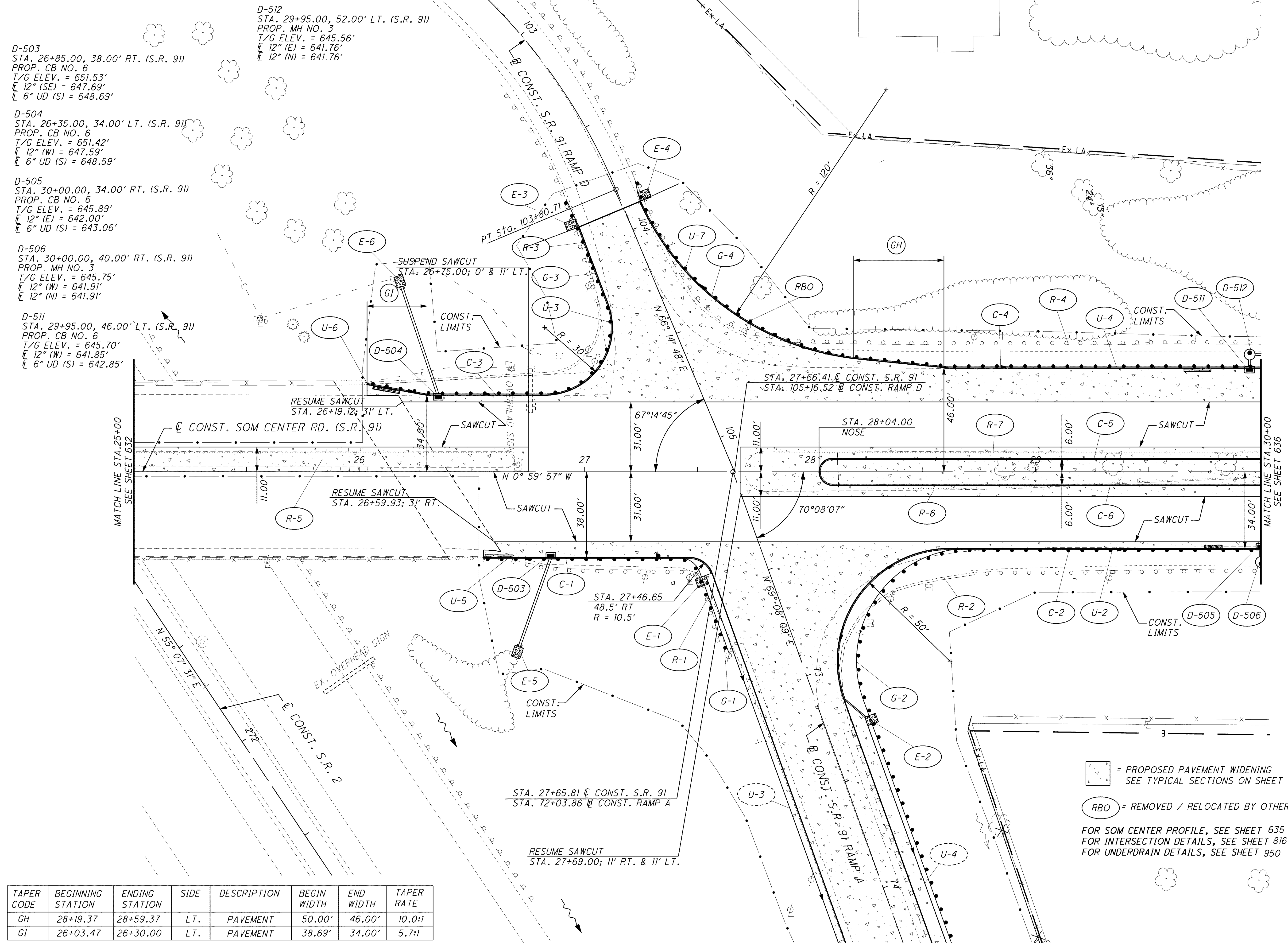


CALCULATED CML CHECKED MVJ

PLAN - SOM CENTER RD. (S.R. 91)  
STA. 25+00.00 TO STA. 30+00.00

LAK-2-3.32

634  
1679



- D-503  
STA. 26+85.00, 38.00' RT. (S.R. 91)  
PROP. CB NO. 6  
T/G ELEV. = 651.53'  
E 12" (SE) = 647.69'  
E 6" UD (S) = 648.69'
- D-504  
STA. 26+35.00, 34.00' LT. (S.R. 91)  
PROP. CB NO. 6  
T/G ELEV. = 651.42'  
E 12" (W) = 647.59'  
E 6" UD (S) = 648.59'
- D-505  
STA. 30+00.00, 34.00' RT. (S.R. 91)  
PROP. CB NO. 6  
T/G ELEV. = 645.89'  
E 12" (E) = 642.00'  
E 6" UD (S) = 643.06'
- D-506  
STA. 30+00.00, 40.00' RT. (S.R. 91)  
PROP. MH NO. 3  
T/G ELEV. = 645.75'  
E 12" (W) = 641.91'  
E 12" (N) = 641.91'
- D-511  
STA. 29+95.00, 46.00' LT. (S.R. 91)  
PROP. CB NO. 6  
T/G ELEV. = 645.70'  
E 12" (W) = 641.85'  
E 6" UD (S) = 642.85'

= PROPOSED PAVEMENT WIDENING  
SEE TYPICAL SECTIONS ON SHEET 35

= REMOVED / RELOCATED BY OTHERS

FOR SOM CENTER PROFILE, SEE SHEET 635  
FOR INTERSECTION DETAILS, SEE SHEET 816  
FOR UNDERDRAIN DETAILS, SEE SHEET 950

TAPER CODE	BEGINNING STATION	ENDING STATION	SIDE	DESCRIPTION	BEGIN WIDTH	END WIDTH	TAPER RATE
GH	28+19.37	28+59.37	LT.	PAVEMENT	50.00'	46.00'	10.0:1
GI	26+03.47	26+30.00	LT.	PAVEMENT	38.69'	34.00'	5.7:1

\\Akrn01\Data\Civil\2004108\00\13486\roadway\sheet\13486CP504.dgn 6/16/2008 10:15:09 AM mmoeleindick