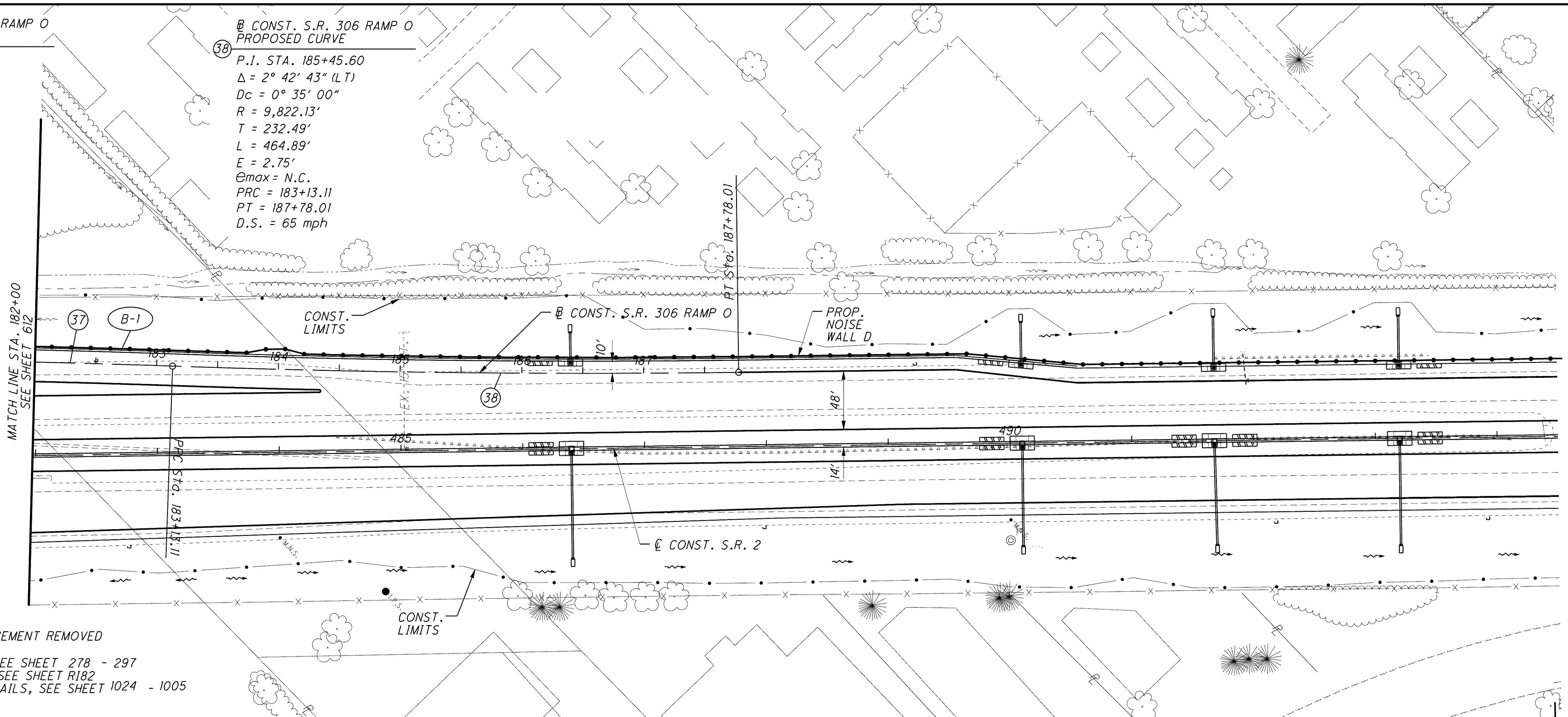


\\Akrn01\Data\Civil\2004108\00\13486\roadway\sheet\13486CP4008.dgn 6/16/2008 10:09:33 AM mmoellendick

37 **B CONST. S.R. 306 RAMP 0 PROPOSED CURVE**
 P.I. STA. 180+80.71
 $\Delta = 2^\circ 42' 43''$ (RT)
 $Dc = 0^\circ 35' 00''$
 $R = 9,822.13'$
 $T = 232.49'$
 $L = 464.89'$
 $E = 2.75'$
 $\Theta_{max} = N.C.$
 $PRC = 178+48.22$
 $PT = 183+13.11$
 $D.S. = 55$ mph

38 **B CONST. S.R. 306 RAMP 0 PROPOSED CURVE**
 P.I. STA. 185+45.60
 $\Delta = 2^\circ 42' 43''$ (LT)
 $Dc = 0^\circ 35' 00''$
 $R = 9,822.13'$
 $T = 232.49'$
 $L = 464.89'$
 $E = 2.75'$
 $\Theta_{max} = N.C.$
 $PRC = 183+13.11$
 $PT = 187+78.01$
 $D.S. = 65$ mph



ITEM 202 PAVEMENT REMOVED
 FOR S.R. 2 PLANS, SEE SHEET 278 - 297
 FOR GORE DETAILS, SEE SHEET R182
 FOR NOISE WALL DETAILS, SEE SHEET 1024 - 1005

STATION	EXIST. GROUND	PROFILE GRADE
182+00	638.77	640.16
182+10	638.92	640.14
182+20	639.04	640.11
182+30	639.18	640.08
182+40	639.26	640.04
182+50	639.29	639.99
182+60	639.21	639.94
182+70	639.26	639.88
182+80	639.32	639.81
182+90	639.37	639.74
183+00	639.50	639.68
183+10	639.61	639.61
183+20	639.54	639.54
183+30	639.48	639.48
183+40	639.41	639.41
183+50	639.34	639.34
183+60	639.27	639.27
183+70	639.21	639.21
183+80	639.14	639.14
183+90	639.07	639.07
184+00	639.00	639.00
184+10	638.92	638.92
184+20	638.85	638.85
184+30	638.78	638.78
184+40		
184+50		
184+60		
184+70		
184+80		
184+90		
185+00		
185+10		
185+20		
185+30		
185+40		
185+50		
185+60		
185+70		
185+80		
185+90		
186+00		
186+10		
186+20		
186+30		
186+40		
186+50		
186+60		
186+70		
186+80		
186+90		
187+00		
187+10		
187+20		
187+30		
187+40		
187+50		
187+60		
187+70		
187+80		
187+90		
188+00		

PLAN AND PROFILE - S.R. 306 RAMP 0
STA. 182+00.00 TO END

LAK-2-3.32

CALCULATED: BSH
 CHECKED: MVJ

617
1679