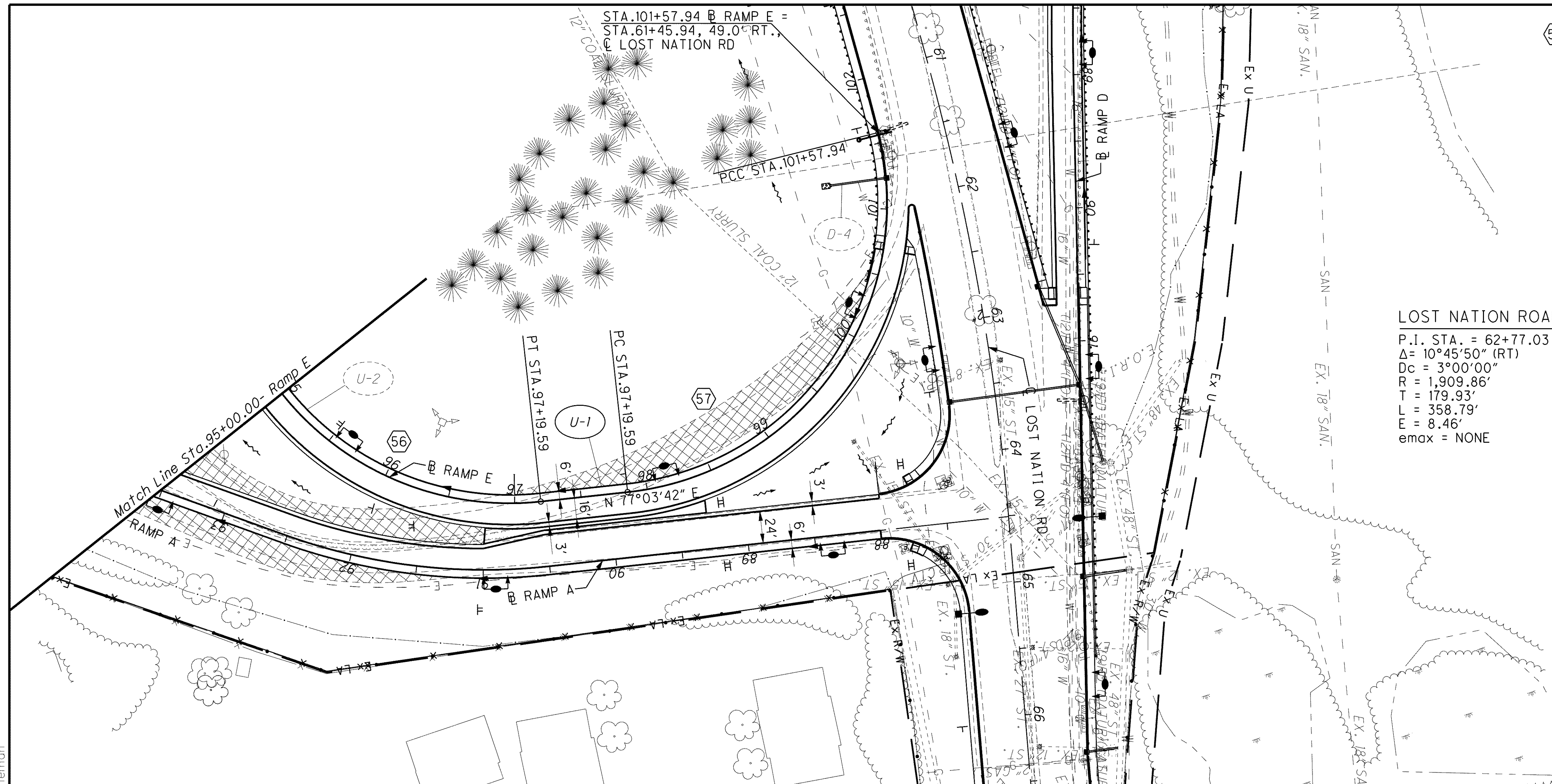


q:\project\lak\13486\roadway\sheets\13486GP21\_LNE.dgn 6/24/2008 10:51:14 AM chaneaman



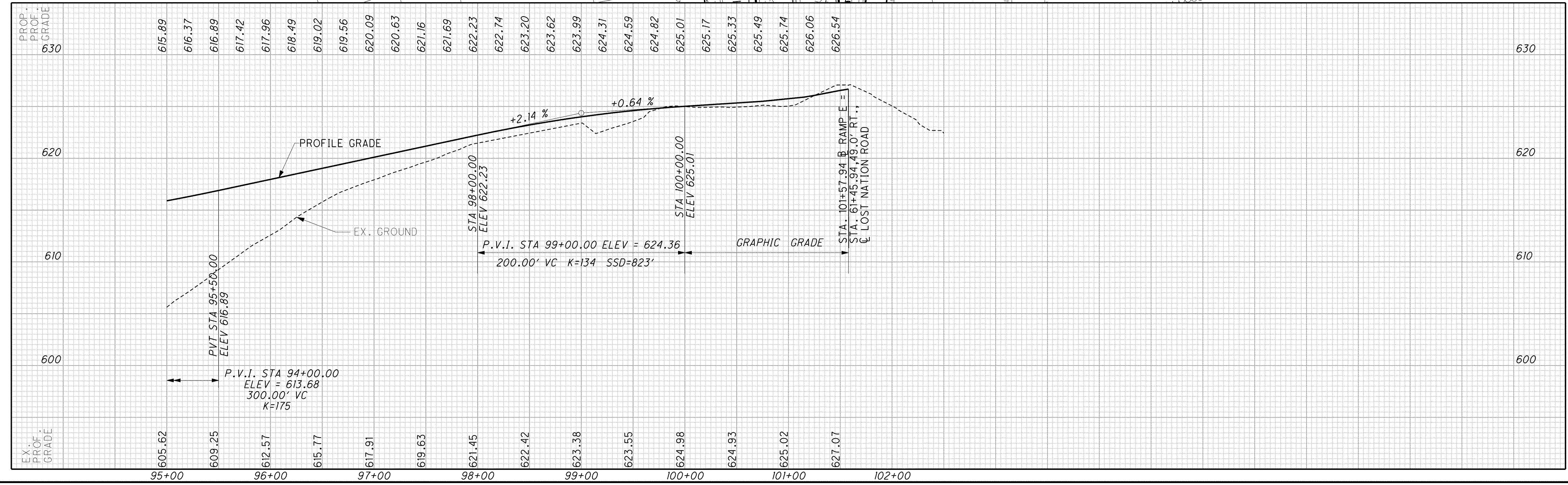
**56 RAMP E CURVE DATA**  
 P.I. STA. = 96+27.66  
 $\Delta = 116^{\circ}13'28''$  (LT)  
 $D_c = 26^{\circ}15'00''$   
 $R = 218.27'$   
 $T = 350.83'$   
 $L = 442.76'$   
 $E = 194.92'$   
 $e_{max} = 0.060$

**57 RAMP E CURVE DATA**  
 P.I. STA. = 100+35.62  
 $\Delta = 97^{\circ}51'43''$  (LT)  
 $D_c = 26^{\circ}15'00''$   
 $R = 218.27'$   
 $T = 250.48'$   
 $L = 372.81'$   
 $E = 113.97'$   
 $e_{max} = 0.060$

**LOST NATION ROAD CURVE DATA**  
 P.I. STA. = 62+77.03  
 $\Delta = 10^{\circ}45'50''$  (RT)  
 $D_c = 3^{\circ}00'00''$   
 $R = 1,909.86'$   
 $T = 179.93'$   
 $L = 358.79'$   
 $E = 8.46'$   
 $e_{max} = NONE$

- NOTES:**
- SEE SHEETS 947 TO 949 FOR WATER QUALITY BMP DETAILS AND QUANTITIES.
  - SEE SHEET 941 FOR UNDERDRAIN DETAILS AND SUBSUMMARY.
  - SEE SHEETS 917 TO 919 FOR DRAINAGE DETAILS.
  - SEE SHEET 801 TO 802 FOR PAVEMENT DETAILS.
  - SEE SHEETS 1118 TO 1120 FOR TRAFFIC CONTROL PLANS.
  - SEE SHEETS 1240 TO 1261 FOR LIGHTING PLANS.
  - SEE SHEET 257 FOR ROADWAY SUBSUMMARY.
  - SEE SHEETS 848 TO 850 FOR DRAINAGE SUBSUMMARY.
  - SEE SHEETS 783 TO 784 FOR INTERCHANGE GRADING DETAILS.

- LEGEND**
- ITEM 670 - DITCH EROSION PROTECTION, 660.02
  - PAVEMENT TO BE REMOVED
  - EXISTING WETLANDS



HORIZONTAL SCALE IN FEET

CALCULATED	CAP	CHECKED	DES
------------	-----	---------	-----

**PLAN AND PROFILE LOST NATION RAMP E**  
**STA. 95+00.00 TO STA. 101+57.94**

**LAK-2-3.32**

543  
1679