

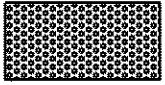

NOTES:

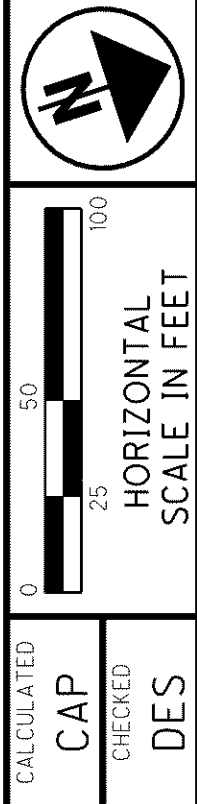
1. SEE SHEETS 947 TO 949 FOR WATER QUALITY BMP DETAILS AND QUANTITIES.
2. SEE SHEET 941 FOR UNDERDRAIN DETAILS AND SUBSUMMARY.
3. SEE SHEETS 917 TO 919 FOR DRAINAGE DETAILS.
4. SEE SHEET 801 TO 802 FOR PAVEMENT DETAILS.
5. SEE SHEETS 1118 TO 1120 FOR TRAFFIC CONTROL PLANS.
6. SEE SHEETS 1240 TO 1261 FOR LIGHTING PLANS.
7. SEE SHEET 257 FOR ROADWAY SUBSUMMARY.
8. SEE SHEETS 848 TO 850 FOR DRAINAGE SUBSUMMARY.
8. SEE SHEETS 783 TO 784 FOR INTERCHANGE GRADING DETAILS.

(52) RAMP D CURVE DATA
 P.I. STA. = 86+09.33
 $\Delta = 41^{\circ}41'09''$ (LT)
 $D_c = 8^{\circ}00'00''$
 $R = 716.20'$
 $\Delta c = 31^{\circ}41'09''$ (LT)
 $L_c = 396.07'$
 $E_s = 51.12'$
 $e_{max} = 0.060$

(53) RAMP D SPIRAL DATA
 P.I. STA. = 88+35.58
 $L_s = 130.00'$
 $\theta_s = 5^{\circ}12'00''$
 $LT = 86.70'$
 $ST = 43.37'$
 $x = 129.89'$
 $y = 3.93'$
 $k = 64.98'$
 $p = 0.98'$
 $e_{max} = 0.060$

LOST NATION CURVE DATA
 P.I. STA. = 62+77.03
 $\Delta = 10^{\circ}45'50''$ RT
 $D_c = 3^{\circ}00'00''$
 $R = 1909.86'$
 $T = 179.93'$
 $L = 358.79'$
 $E_s = 8.46'$
 $e_{max} = NONE$

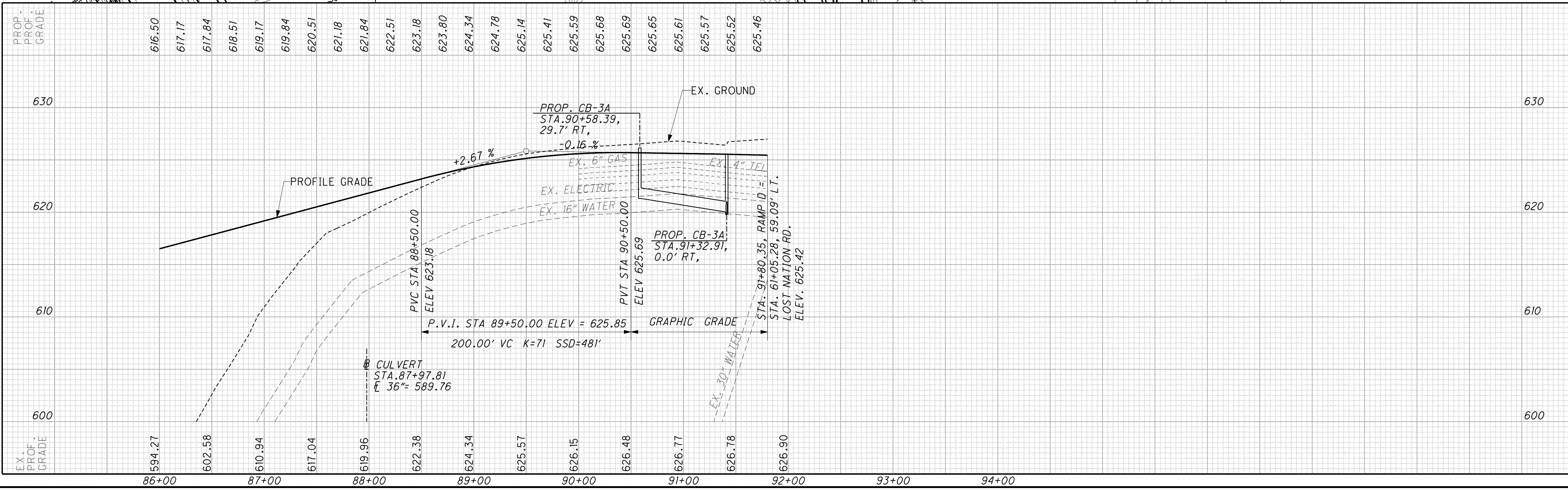
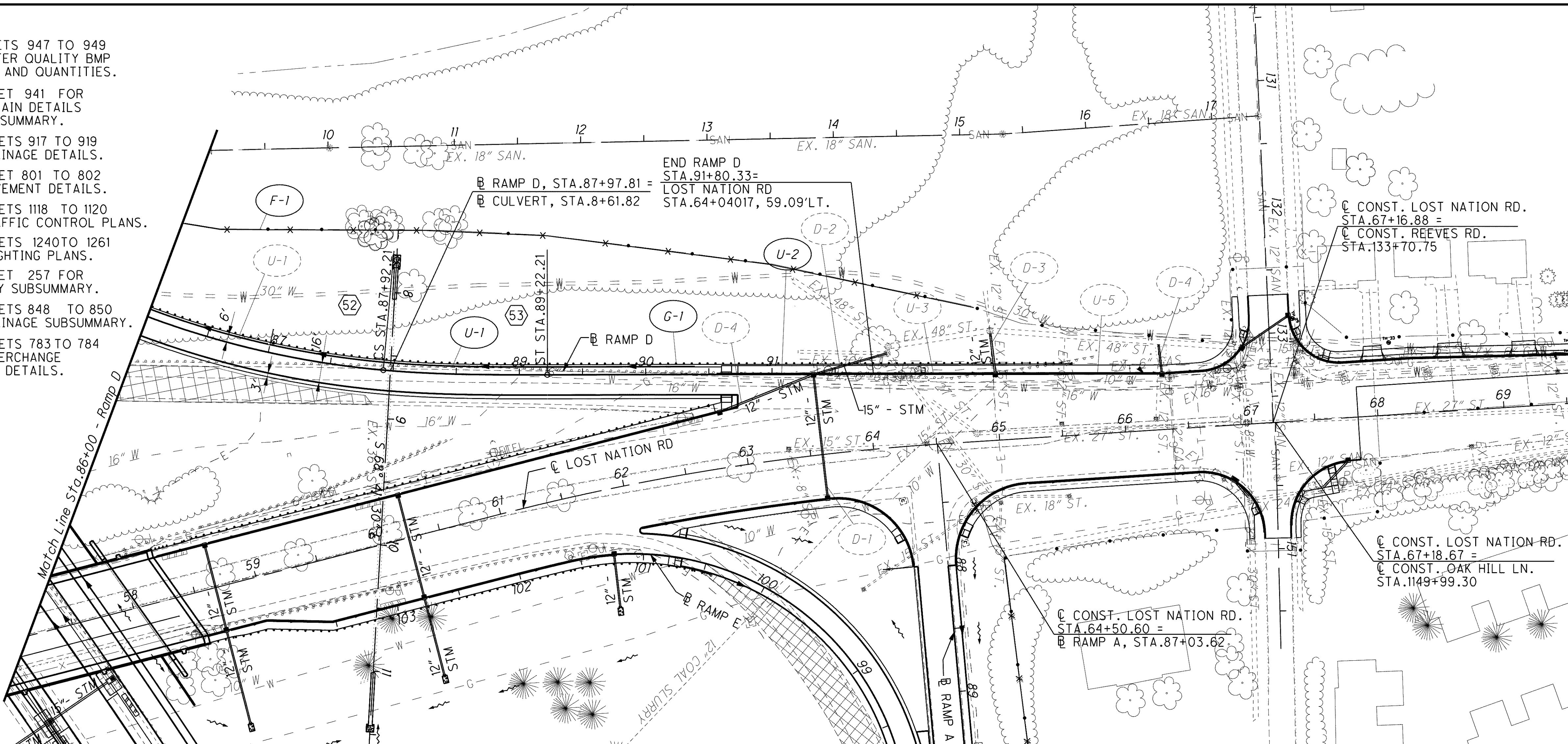
LEGEND
 ITEM 670 - DITCH EROSION PROTECTION, 660.02
 PAVEMENT TO BE REMOVED



**PLAN AND PROFILE LOST NATION RAMP D
 STA. 86+00 TO STA. 94+06**

LAK-2-3.32

533
1679



o:\project\lak\13486\roadway\sheets\13486GP18_LND.dgn 6/24/2008 10:43:20 AM choneman