

- NOTES:
- SEE SHEETS 947 TO 949 FOR ADDITIONAL WATER QUALITY BMP DETAILS AND QUANTITIES.
 - SEE SHEETS 917 TO 919 FOR DRAINAGE DETAILS.
 - SEE SHEETS 941 FOR UNDERDRAIN DETAILS AND SUBSUMMARY.
 - SEE SHEETS 1118 TO 1120 FOR TRAFFIC CONTROL PLANS.
 - SEE SHEETS 1240 TO 1261 FOR LIGHTING PLANS.
 - SEE SHEETS 257 FOR ROADWAY SUBSUMMARY.
 - SEE SHEETS 848 TO 850 FOR DRAINAGE SUBSUMMARY.
 - SEE SHEETS 801 TO 810 FOR LOST NATION ROAD PAVEMENT DETAILS.
 - SEE SHEETS 783 TO 784 FOR INTERCHANGE GRADING DETAIL.

45 RAMP A CURVE DATA

P.I. STA. = 95+70.53
 $\Delta = 25^\circ 12' 06''$ (LT)
 $D_c = 9^\circ 00' 00''$
 $R = 636.62'$
 $T = 142.31'$
 $L = 280.02'$
 $E = 15.71'$
 $e_{MAX} = 0.060$

46 RAMP A SPIRAL DATA

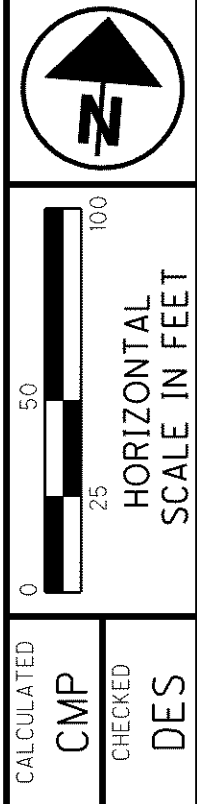
P.I. STA. 97+95.83
 $L_s = 200.00'$
 $f_s = 13^\circ 00' 00''$
 $LT = 113.25'$
 $ST = 87.59'$
 $x = 198.59'$
 $y = 19.70'$
 $k = 99.83'$
 $p = 1.45'$
 $e_{MAX} = 0.060$

47 RAMP A CURVE DATA

P.I. STA. = 100+47.17
 $\Delta = 11^\circ 04' 48''$ (LT)
 $D_c = 4^\circ 00' 00''$
 $R = 1432.40'$
 $T = 138.93'$
 $L = 277.00'$
 $E = 6.72'$
 $e_{MAX} = 0.060$

LEGEND

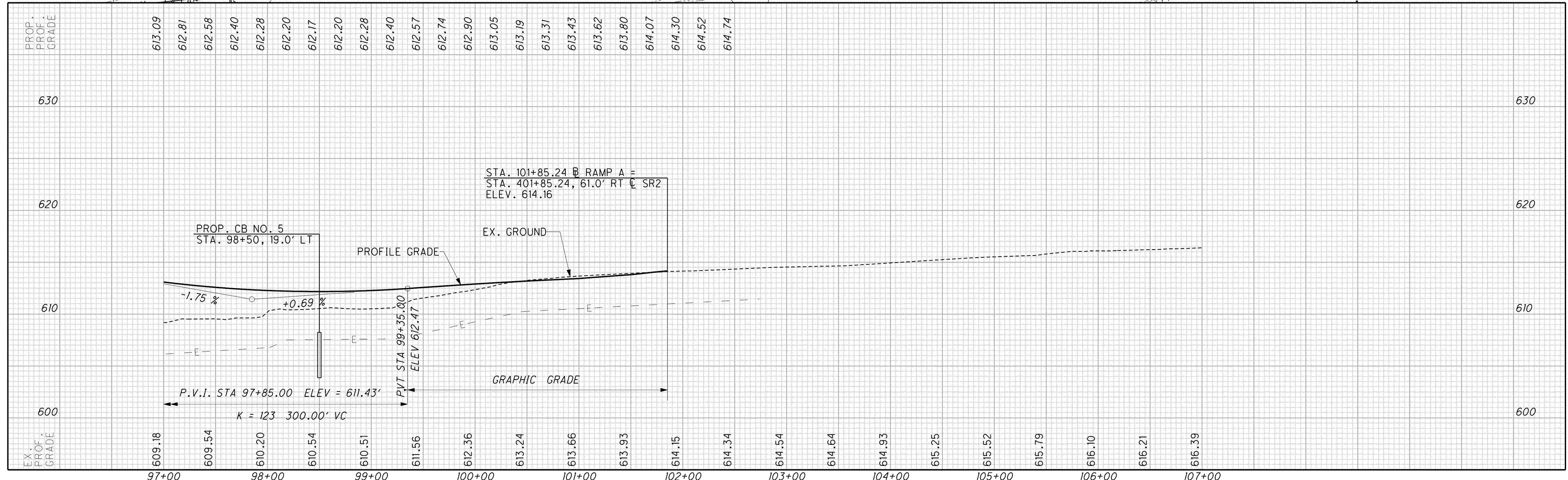
- EXIST. WETLANDS
- ITEM 670 - DITCH EROSION PROTECTION, 660.02
- PAVEMENT TO BE REMOVED



PLAN AND PROFILE LOST NATION RAMP A
 STA. 97+00.00 TO STA. 101+85.24

LAK-2-3.32

513
1679



o:\project\lak\13486\roadway\sheets\13486GP12_LNA.dgn 6/24/2008 10:30:29 AM dshaner