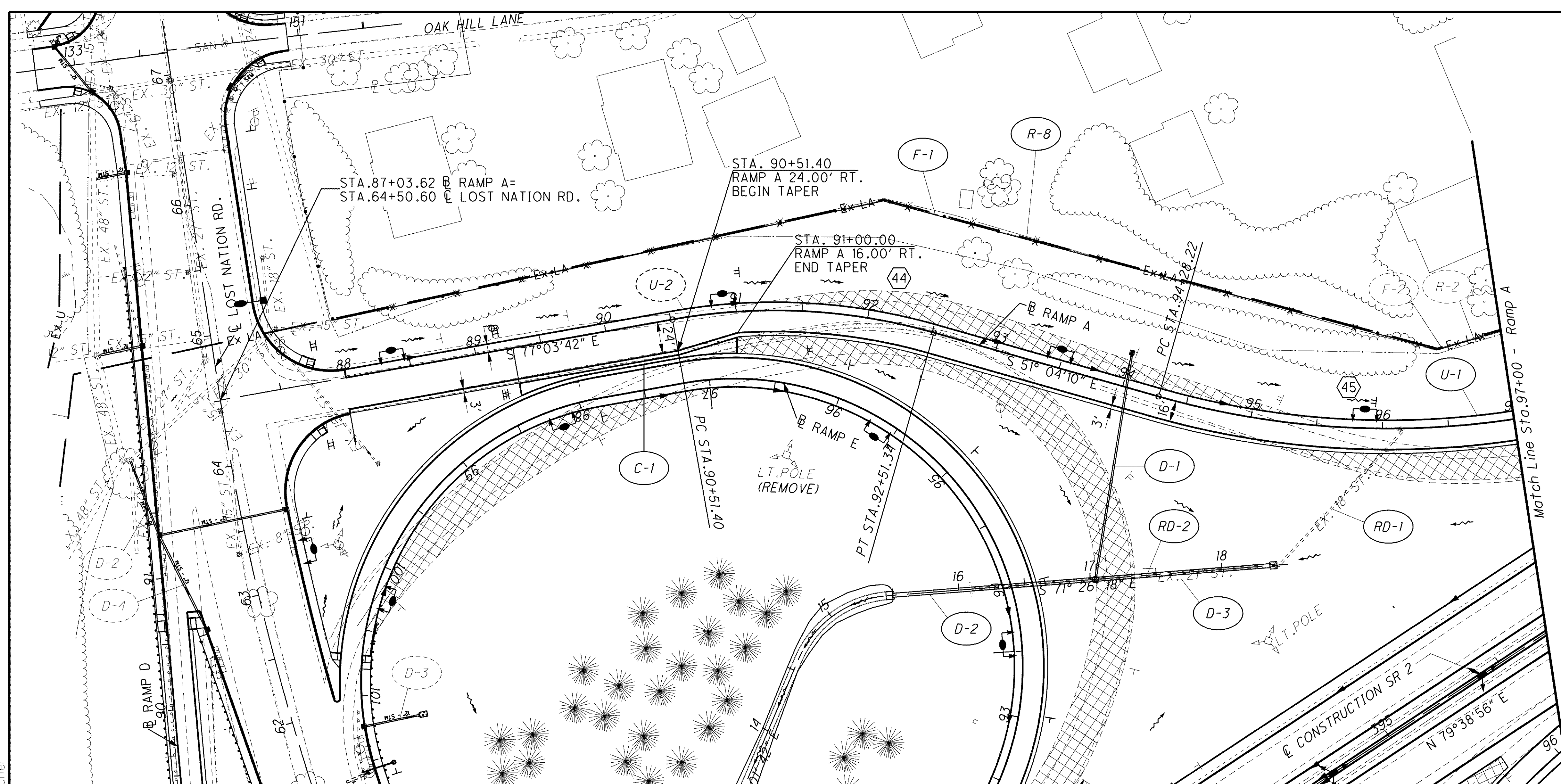


q:\project\lak\13486\roadway\sheets\13486GP11\_LNA.dgn 6/24/2008 10:30:13 AM dshoner



**NOTES:**

- SEE SHEETS 947 TO 949 FOR ADDITIONAL WATER QUALITY BMP DETAILS AND QUANTITIES.
- SEE SHEETS 917 TO 919 FOR DRAINAGE DETAILS.
- SEE SHEETS 941 FOR UNDERDRAIN DETAILS AND SUBSUMMARY.
- SEE SHEETS 1118 TO 1120 FOR TRAFFIC CONTROL PLANS.
- SEE SHEETS 1240 TO 1261 FOR LIGHTING PLANS.
- SEE SHEETS 257 FOR ROADWAY SUBSUMMARY.
- SEE SHEETS 848 TO 850 FOR DRAINAGE SUBSUMMARY.
- SEE SHEETS 822 TO 829 FOR LOST NATION ROAD INTERSECTION DETAILS.
- SEE SHEETS 783 TO 784 FOR INTERCHANGE GRADING DETAIL.

**44 RAMP A CURVE DATA**

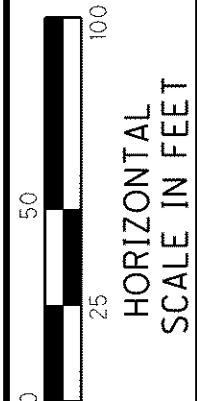
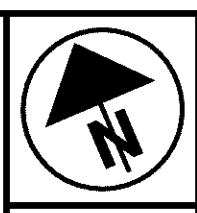
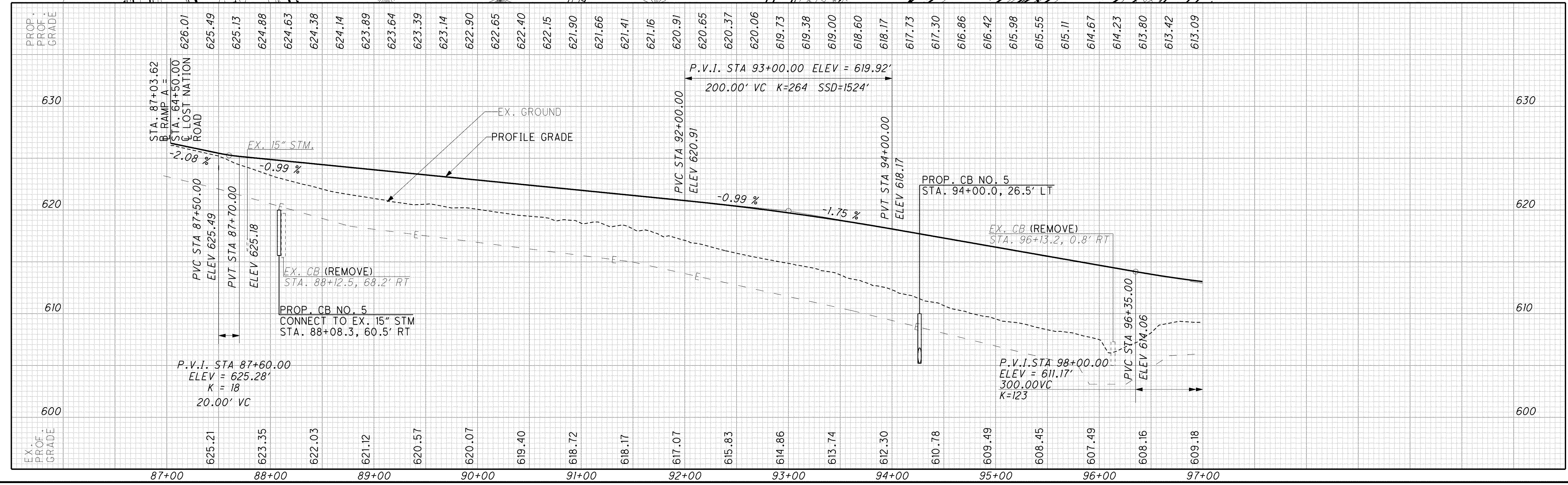
P.I. STA. = 91+53.12  
 $\Delta = 25^\circ 59' 31''$  (RT)  
 $D_c = 13^\circ 00' 00''$   
 $R = 440.74'$   
 $T = 101.72'$   
 $L = 199.94'$   
 $E = 11.59'$   
 $eMAX = 0.060$

**45 RAMP A CURVE DATA**

P.I. STA. = 95+70.53  
 $\Delta = 25^\circ 12' 06''$  (LT)  
 $D_c = 9^\circ 00' 00''$   
 $R = 636.62'$   
 $T = 142.31'$   
 $L = 280.02'$   
 $E = 15.71'$   
 $eMAX = 0.060$

**LEGEND**

- ITEM 670 - DITCH EROSION PROTECTION, 660.02
- PAVEMENT TO BE REMOVED



CALCULATED  
 CAP  
 CHECKED  
 DES

**PLAN AND PROFILE LOST NATION RAMP A  
 STA. 87+03.62 TO STA. 97+00**

**LAK-2-3.32**