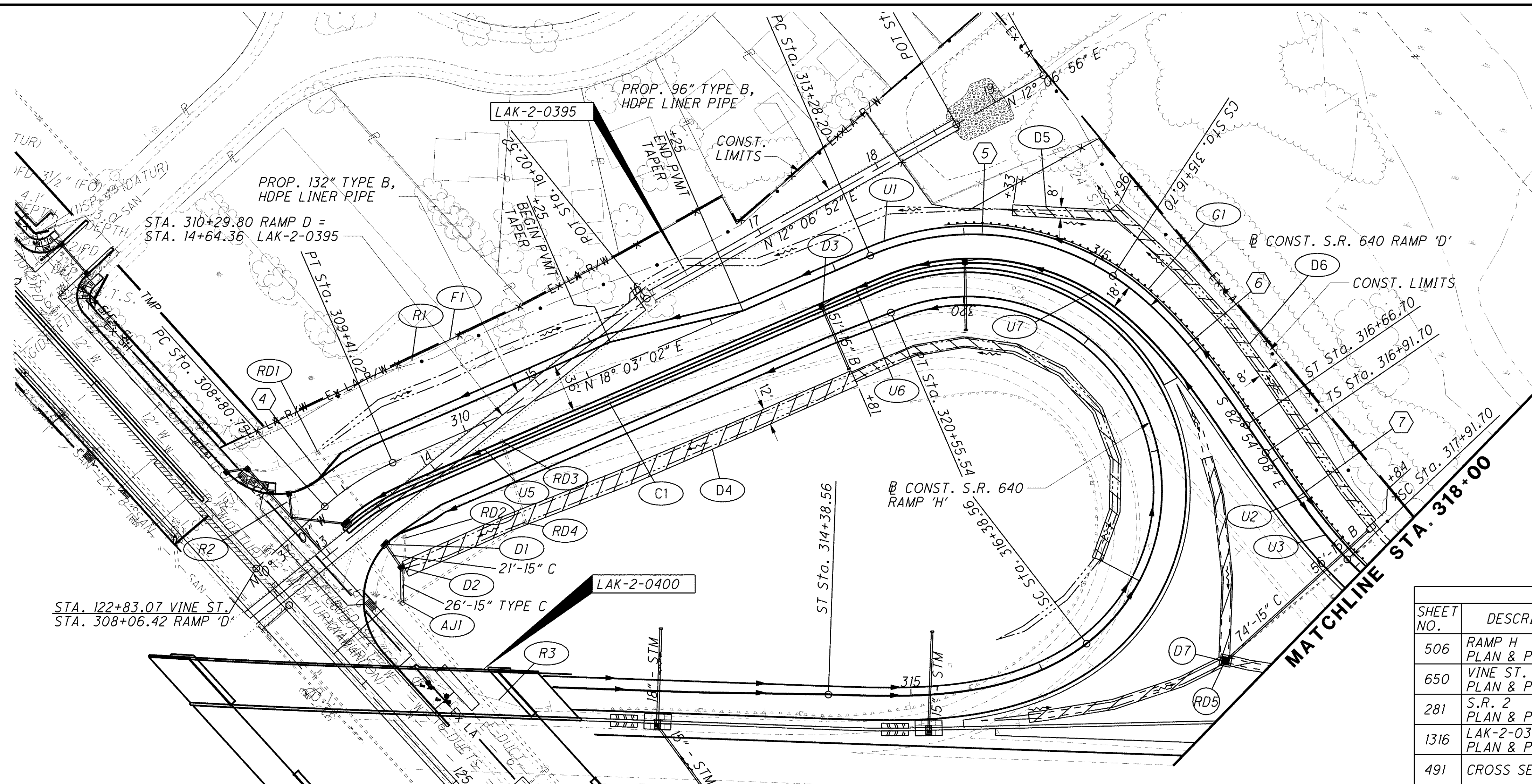


o:\project\lak\13486\roadway\sheets\13486GP03\_640D.dgn 6/23/2008 1:02:58 PM jmadaria

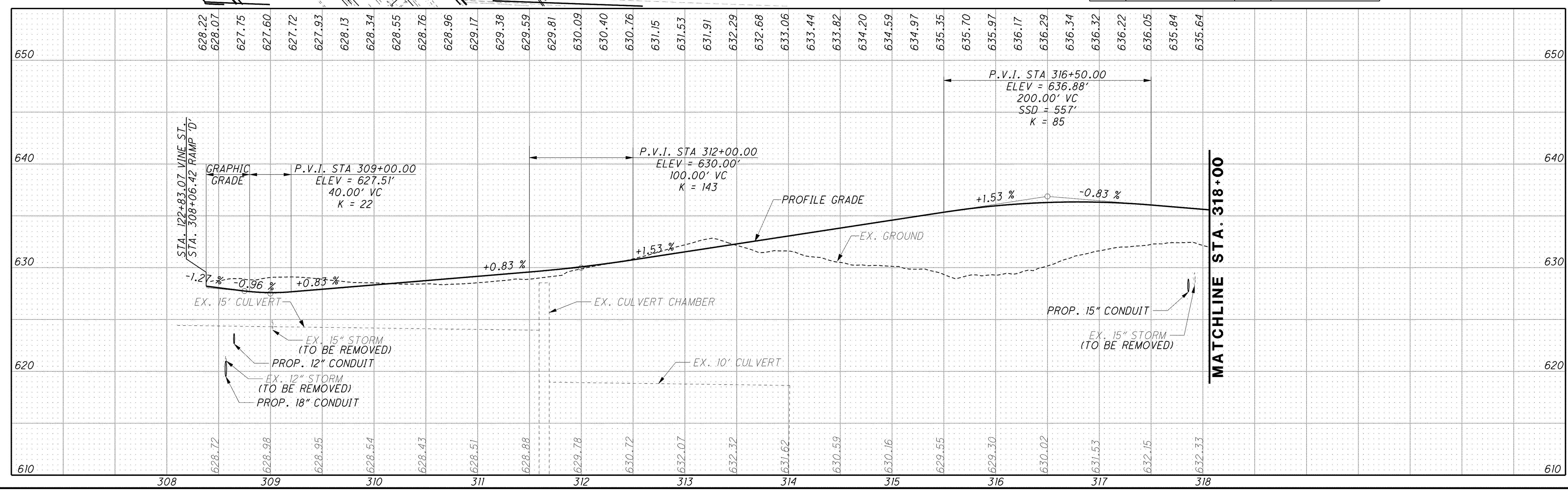


- LEGEND**
- EX. WETLANDS
  - ITEM 670 DITCH EROSION PROTECTION, 660.02
  - ITEM 670 DITCH EROSION PROTECTION MAT, TYPE A
  - ITEM 670 DITCH EROSION PROTECTION MAT, TYPE B
  - ITEM 601 ROCK CHANNEL PROTECTION TYPE C W/ FILTER
  - ITEM 601 ROCK CHANNEL PROTECTION TYPE D W/ FILTER

- 4 RAMP D CURVE DATA**  
P.I. STA. 309+05.63  
 $\Delta = 18^\circ 40' 02''$  (RT)  
 $Dc = 30^\circ 58' 14''$   
 $R = 185.00'$   
 $T = 30.41'$   
 $L = 60.27'$   
 $E = 2.48'$   
 $eMAX = 0.058$
- 5 RAMP D CURVE DATA**  
P.I. STA. 314+85.22  
 $\Delta = 79^\circ 02' 46''$  (RT)  
 $Dc = 29^\circ 59' 52''$   
 $R = 191.00'$   
 $\Delta c = 56^\circ 32' 52''$  (RT)  
 $Lc = 188.51'$   
 $Es = 59.81'$   
 $eMAX = 0.58$
- 6 RAMP D SPIRAL DATA**  
P.I. STA. 315+61.92  
 $Ls = 150.00'$   
 $\theta s = 22^\circ 29' 54''$   
 $LT = 100.82'$   
 $ST = 50.75'$   
 $x = 147.70'$   
 $y = 19.42'$   
 $k = 74.62'$   
 $p = 4.88'$
- 7 RAMP D SPIRAL DATA**  
P.I. STA. 317+52.93  
 $Ls = 100.00'$   
 $\theta s = 9^\circ 00' 00''$   
 $LT = 66.75'$   
 $ST = 33.41'$   
 $x = 99.75'$   
 $y = 5.23'$   
 $k = 49.96'$   
 $p = 1.31'$

**CROSS REFERENCES**

SHEET NO.	DESCRIPTION	SHEET NO.	DESCRIPTION
506	RAMP H PLAN & PROFILE	490	EST. QUANTITIES
650	VINE ST. PLAN & PROFILE	819	INTERSECTION DETAILS
281	S.R. 2 PLAN & PROFILE	795	PAVEMENT DETAILS
1316	LAK-2-0395 PLAN & PROFILE	491	STORM PROFILES
491	CROSS SECTIONS		



**PLAN AND PROFILE VINE ST. RAMP D**

**STA. BEGIN WORK TO STA. 318+00**

**LAK-2-3.32**

488  
1679