

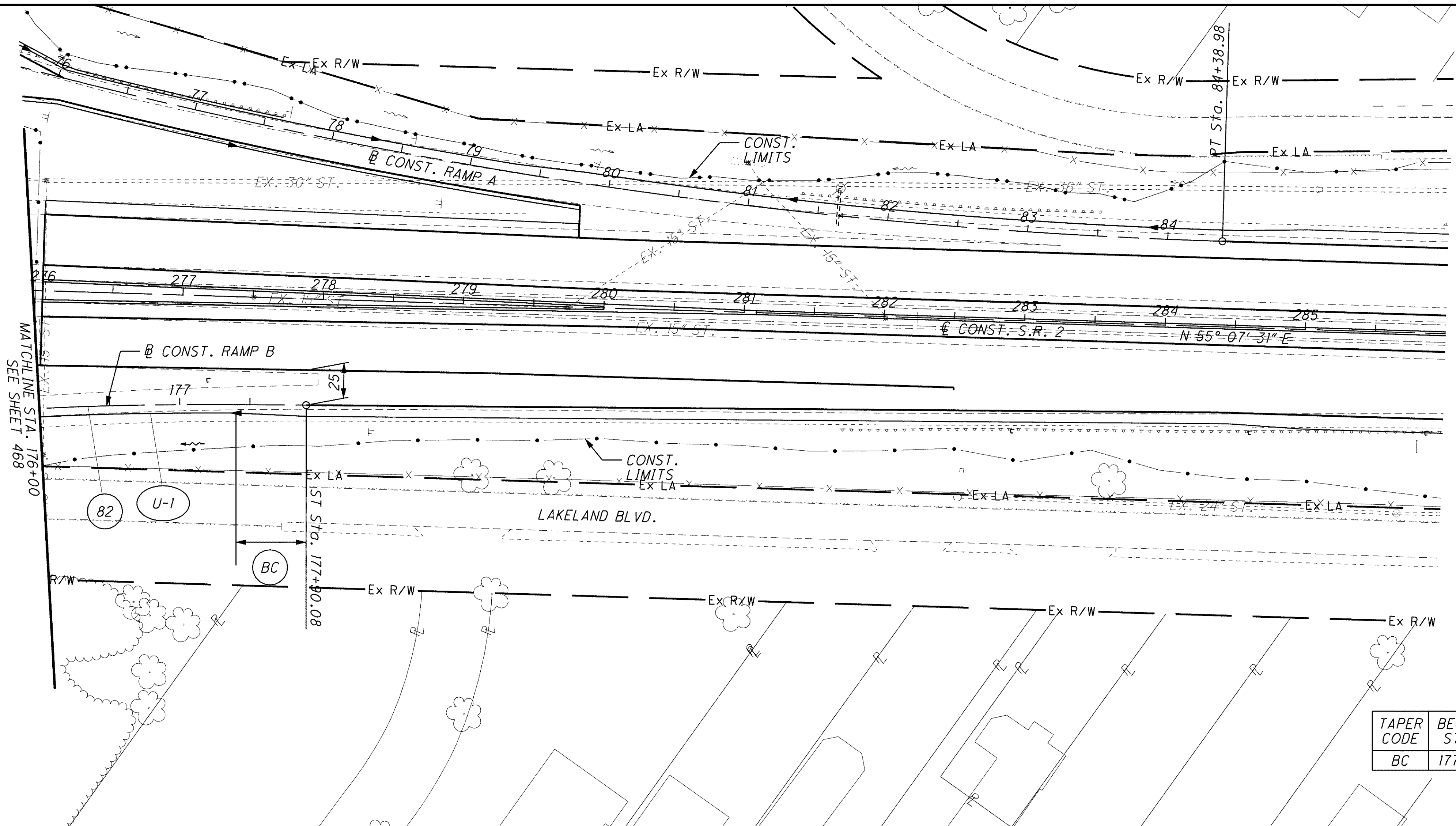
CALCULATED CML CHECKED MVJ

**PLAN AND PROFILE S.R. 91 RAMP B
STA. 176+00.00 TO END**

LAK-2-3.32

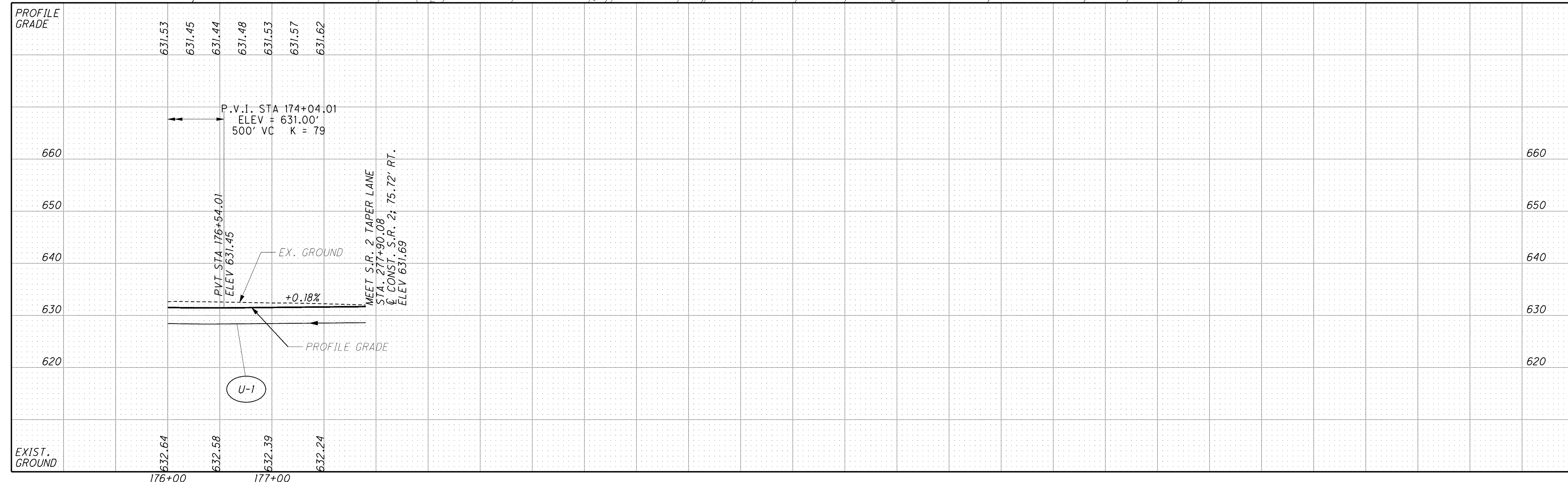
469
1679

B CONST. S.R. 91 RAMP B
 PROPOSED SPIRAL
 P.I. STA. 176+56.78
 $L_s = 200.00'$
 $\theta_s = 1^\circ 20' 00''$
 $LT = 133.37'$
 $ST = 66.70'$
 $x = 199.90'$
 $y = 4.65'$
 $k = 99.98'$
 $p = 1.16'$
 $SC = 175+90.08$
 $ST = 177+90.08$



TAPER CODE	BEGINNING STATION	ENDING STATION	SIDE	DESCRIPTION	BEGIN WIDTH	END WIDTH	TAPER RATE
BC	177+40.08	177+90.08	RT.	SHOULDER	6.00'	8.00'	25:1

FOR S.R. 2 PLANS, SEE SHEET 278 - 297
 FOR GORE DETAIL, SEE SHEET 792
 FOR UNDERDRAIN DETAILS, SEE SHEET 950



\\Akrn01\Data\Civil\2004108\00_13486\road\wv\sheet.s\13486GP5004.dgn 6/16/2008 10:13:35 AM mmoelendick