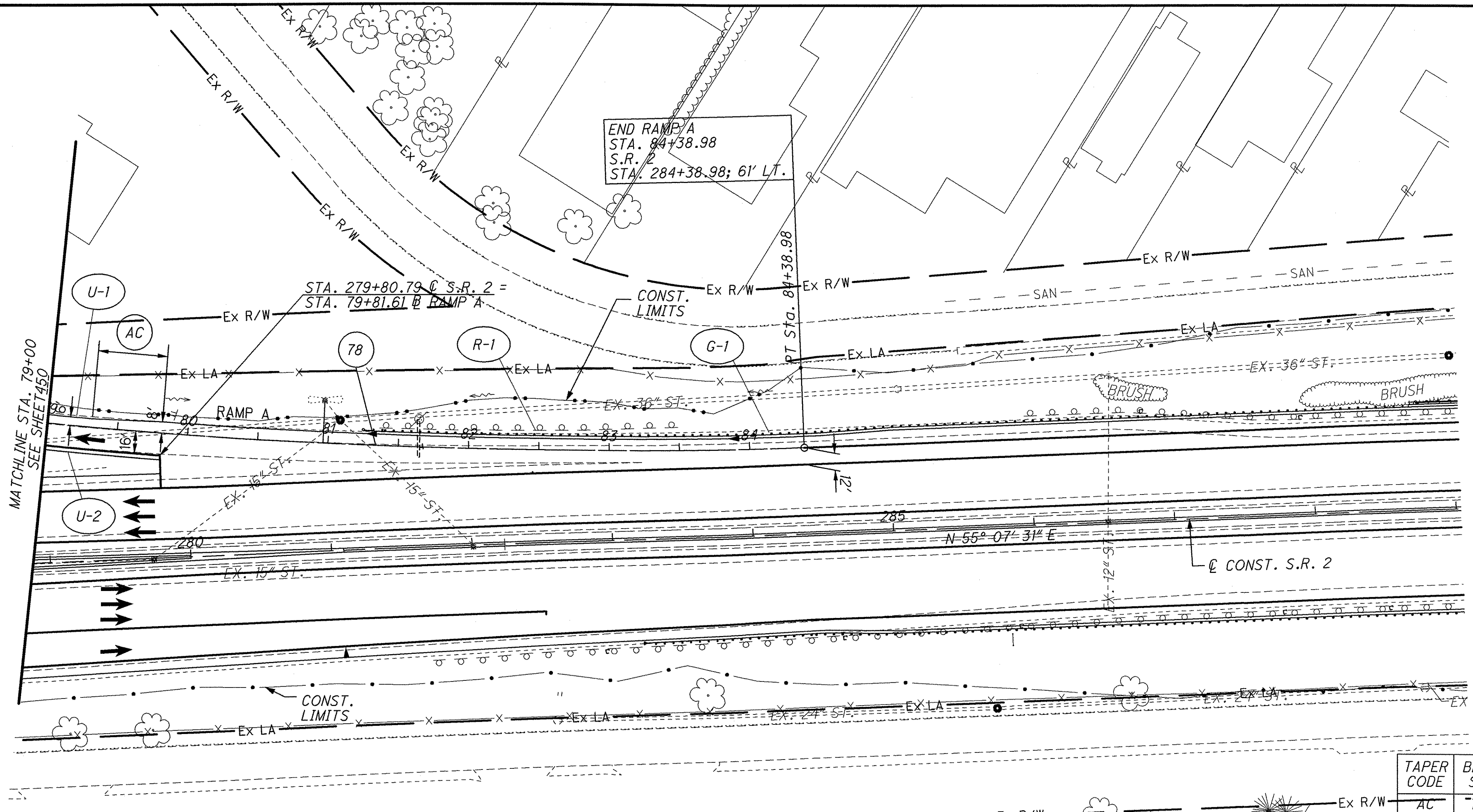


\\Akrn01\DATA\Civil\2004108\00\13486\roadway\sheet\13486GP5002.dgn 6/17/2008 11:35:45 AM mmoellendick



CONST. S.R. 91 RAMP A
 PROPOSED CURVE
 P.I. STA. 79+74.26
 $\Delta = 14^\circ 00' 39''$ (LT)
 $D_c = 1^\circ 30' 00''$
 $R = 3820.00'$
 $T = 469.40'$
 $L = 934.12'$
 $E = 28.73'$
 $e_{max} = 0.0320$
 $PC = 75+04.86$
 $PT = 84+38.98$

FOR RAMP GORE DETAIL, SEE SHEET 791.
 FOR S.R. 2 PLANS, SEE SHEETS 278 - 297.
 FOR UNDERDRAIN DETAILS, SEE SHEET 950.

TAPER CODE	BEGINNING STATION	ENDING STATION	SIDE	DESCRIPTION	BEGIN WIDTH	END WIDTH	TAPER RATE
AC	79+31.61	79+81.61	LT.	SHOULDER	6.00'	8.00'	25:1

