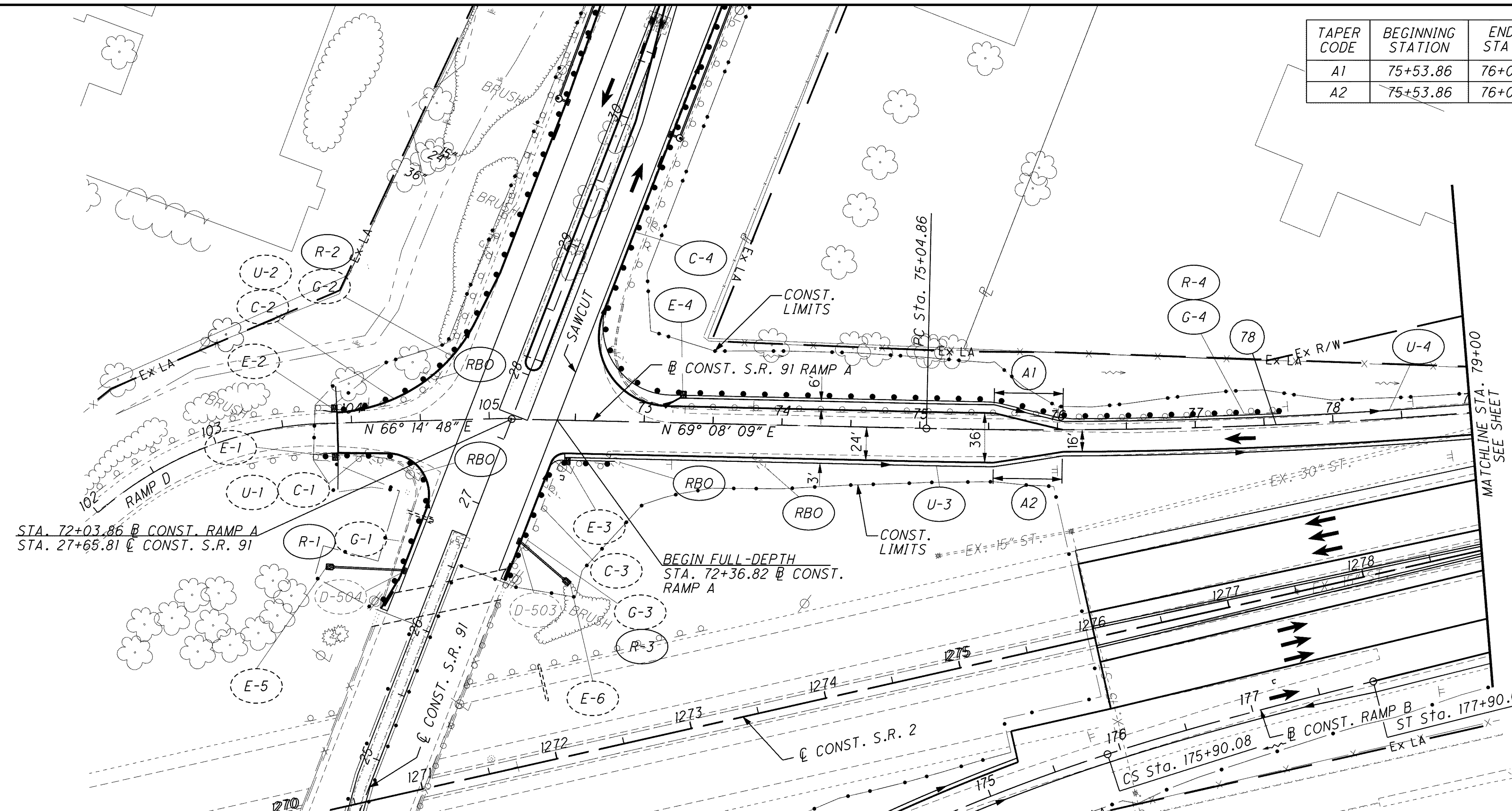
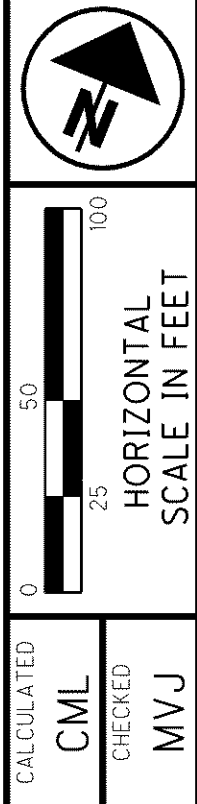


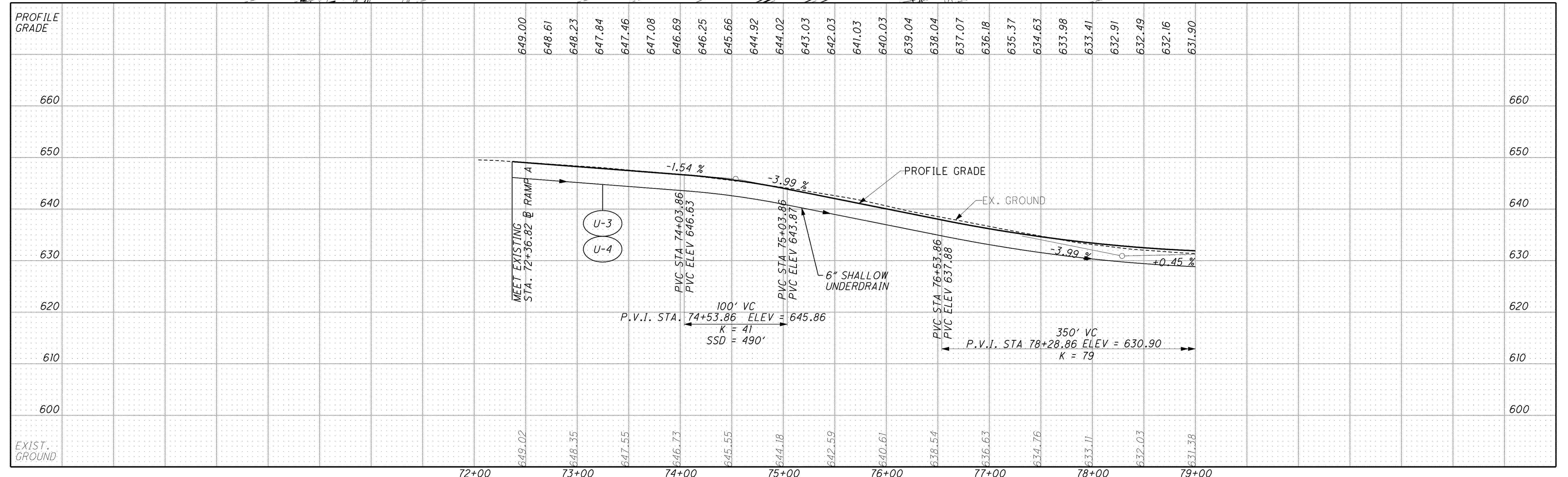
\\Akrn01\Data\Civil\2004108\00\13486\roadway\sheets\13486GP5001.dgn 6/16/2008 10:12:15 AM mmoellendick

TAPER CODE	BEGINNING STATION	ENDING STATION	SIDE	DESCRIPTION	BEGIN WIDTH	END WIDTH	TAPER RATE
A1	75+53.86	76+03.86	LT	PAVEMENT	12.00'	0.00'	4.17:1
A2	75+53.86	76+03.86	RT	PAVEMENT	24.00'	16.00'	6.25:1



⑦ CONST. S.R. 91 RAMP A
 PROPOSED CURVE
 P.I. STA. 79+74.26
 $\Delta = 14^\circ 00' 39''$ (LT)
 $D_c = 1^\circ 30' 00''$
 $R = 3820.00'$
 $T = 469.40'$
 $L = 934.12'$
 $E = 28.73'$
 $e_{max} = 0.0320$
 $PC = 75+04.86$
 $PT = 84+38.98$

FOR INTERSECTION DETAIL, SEE SHEET 816.
 FOR S.R. 2 PLANS, SEE SHEET 278 - 297.
 FOR S.R. 91 PLANS, SEE SHEET S51 - S510A.
 FOR LIGHTNING PLANS, SEE SHEETS 1201-LD3.
 FOR UNDERDRAIN DETAILS, SEE SHEET 950.



PLAN AND PROFILE S.R. 91 RAMP A
 BEGIN TO STA. 79+00.00

LAK - 2 - 3.32

450
 1679