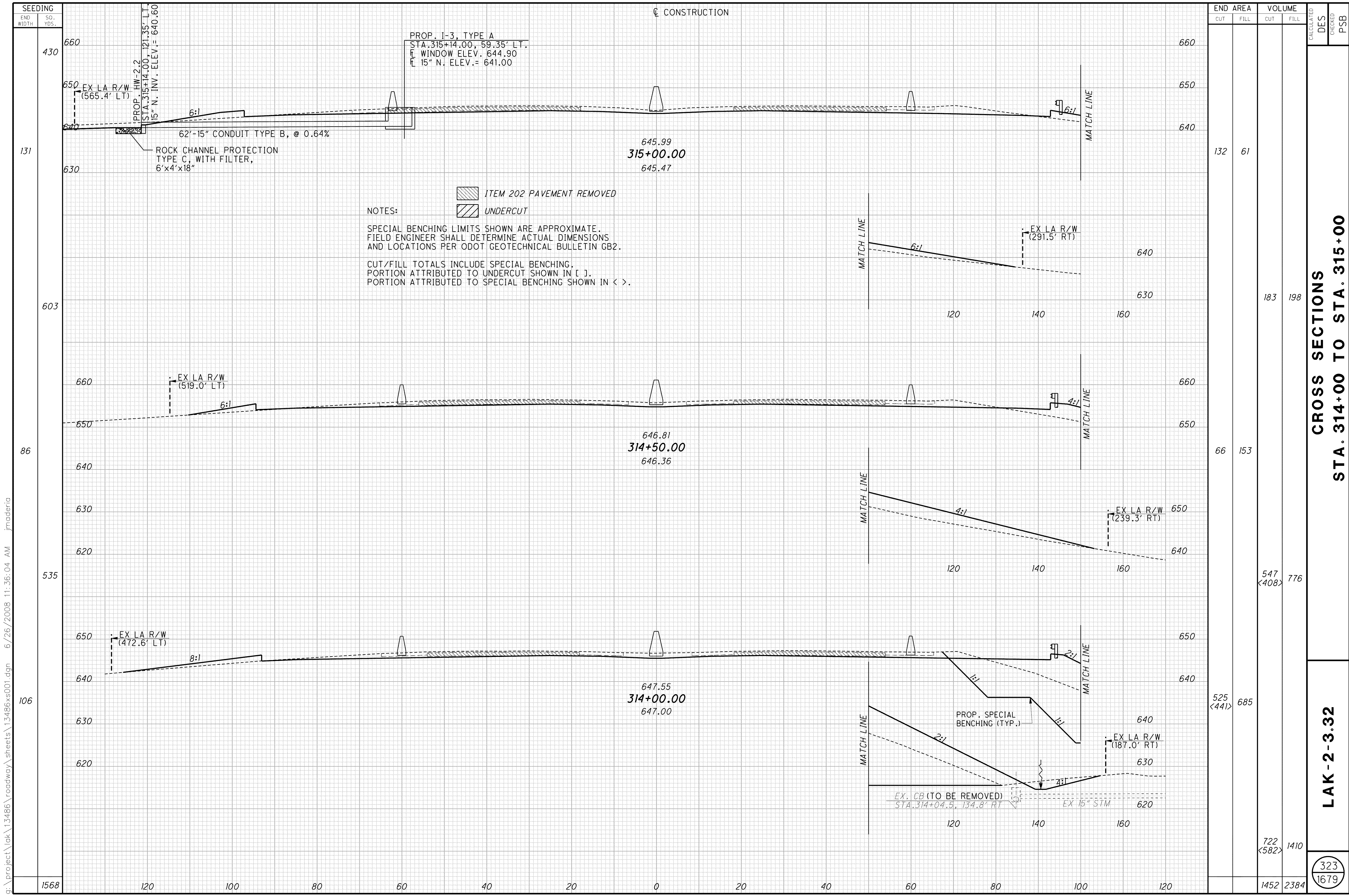


q:\project\lak\13486\roadway\sheets\13486xs001.dgn 6/26/2008 11:36:04 AM jmadaria



PROP. I-3, TYPE A  
 STA. 315+14.00, 59.35' LT.  
 WINDOW ELEV. 644.90  
 15" N. ELEV. = 641.00

NOTES:  
 [Hatched Box] ITEM 202 PAVEMENT REMOVED  
 [Diagonal Lines Box] UNDERCUT

SPECIAL BENCHING LIMITS SHOWN ARE APPROXIMATE.  
 FIELD ENGINEER SHALL DETERMINE ACTUAL DIMENSIONS  
 AND LOCATIONS PER ODOT GEOTECHNICAL BULLETIN GB2.  
 CUT/FILL TOTALS INCLUDE SPECIAL BENCHING.  
 PORTION ATTRIBUTED TO UNDERCUT SHOWN IN [ ].  
 PORTION ATTRIBUTED TO SPECIAL BENCHING SHOWN IN < >.

END AREA	VOLUME		CALCULATED	DES	CHECKED	PSB
	CUT	FILL				
132	61					
603	183	198				
86	153					
535	547 <408>	776				
106	525 <441>	685				
1568	722 <582>	1410				
	1452	2384				

CROSS SECTIONS  
 STA. 314+00 TO STA. 315+00

LAK-2-3.32

323  
 1679