

NOTES:

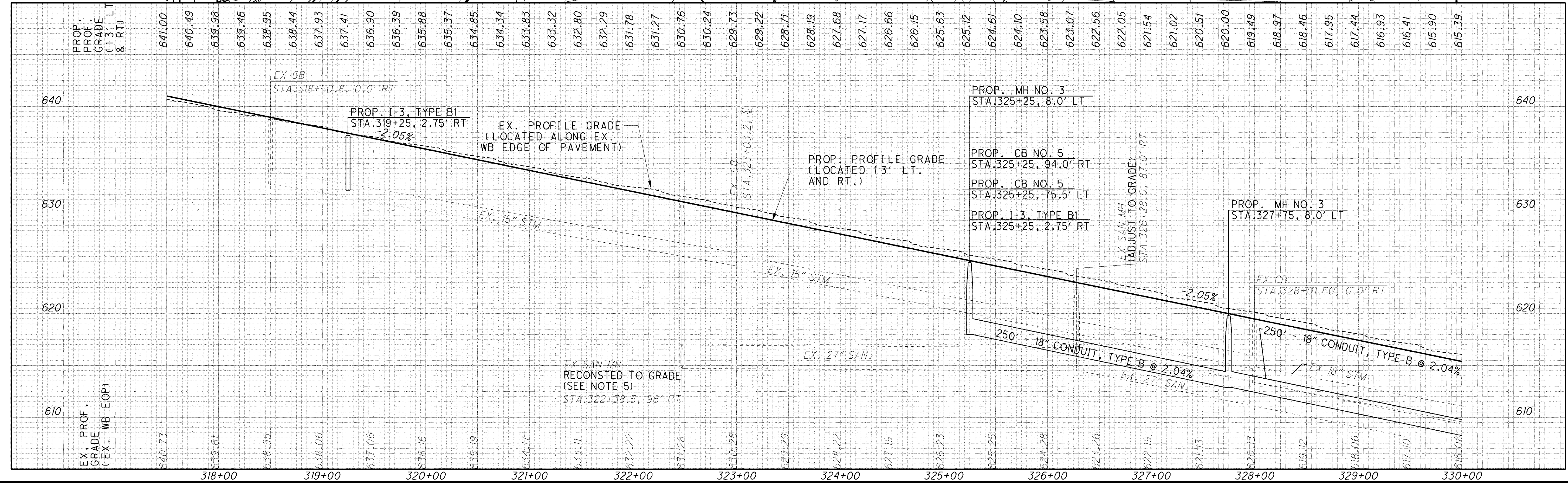
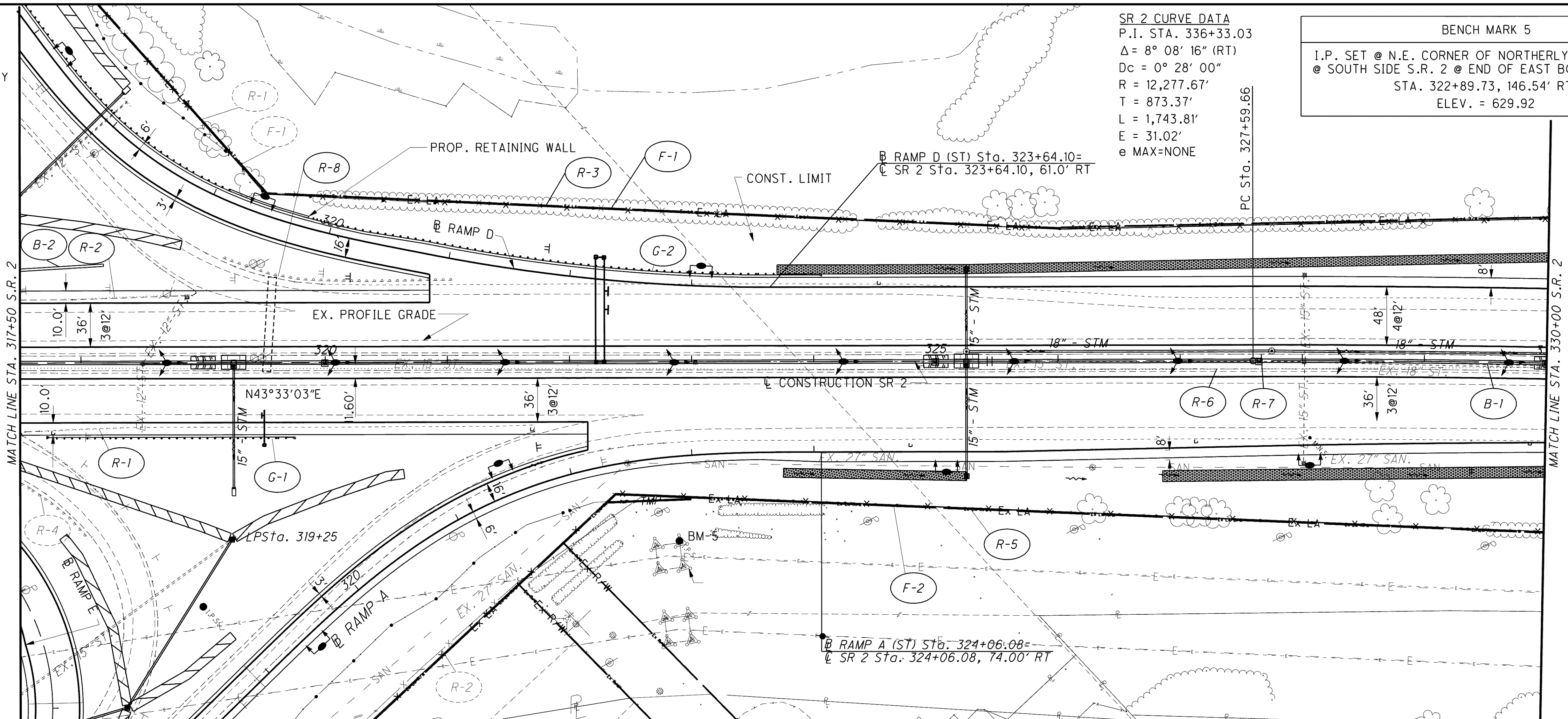
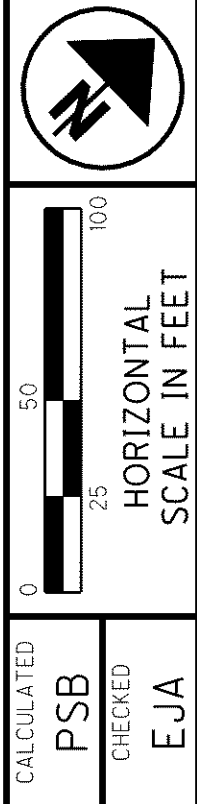
1. SEE SHEETS 947 TO 949 FOR WATER QUALITY BMP DETAILS AND QUANTITIES.
2. SEE SHEETS 903 TO 916 FOR DRAINAGE DETAILS.
3. SEE SHEETS 874 TO 896 FOR DRAINAGE PLAN AND PROFILES.
4. SEE SHEETS 926 TO 938 FOR UNDERDRAIN DETAILS AND SUBSUMMARY.
5. SEE SHEETS 1094 TO 1113 FOR TRAFFIC CONTROL PLANS.
6. SEE SHEETS 1240 TO 1261 FOR LIGHTING PLANS.
7. SEE SHEETS 482 TO 511 FOR VINE STREET RAMP PLAN AND PROFILES.
8. SEE SHEETS 248 TO 255 FOR ROADWAY SUBSUMMARY TABLES.

LEGEND

- EX. WETLANDS
- ITEM 670 DITCH EROSION PROTECTION, 660.02
- ITEM 601 ROCK CHANNEL PROTECTION TYPE C W/ FILTER
- PAVEMENT TO BE REMOVED

SR 2 CURVE DATA  
 P.I. STA. 336+33.03  
 $\Delta = 8^\circ 08' 16''$  (RT)  
 $D_c = 0^\circ 28' 00''$   
 $R = 12,277.67'$   
 $T = 873.37'$   
 $L = 1,743.81'$   
 $E = 31.02'$   
 $e$  MAX=NONE

BENCH MARK 5  
 I.P. SET @ N.E. CORNER OF NORTHERLY ELEC. TOWER  
 @ SOUTH SIDE S.R. 2 @ END OF EAST BOUND ON RAMP  
 STA. 322+89.73, 146.54' RT.  
 ELEV. = 629.92



PLAN AND PROFILE  
 STA. 317+50 TO STA. 330+00

LAK-2-3.32

G:\Project\ok\13486\roadway\sheet\13486CP04.dgn 6/26/2008 8:20:27 AM pberdis