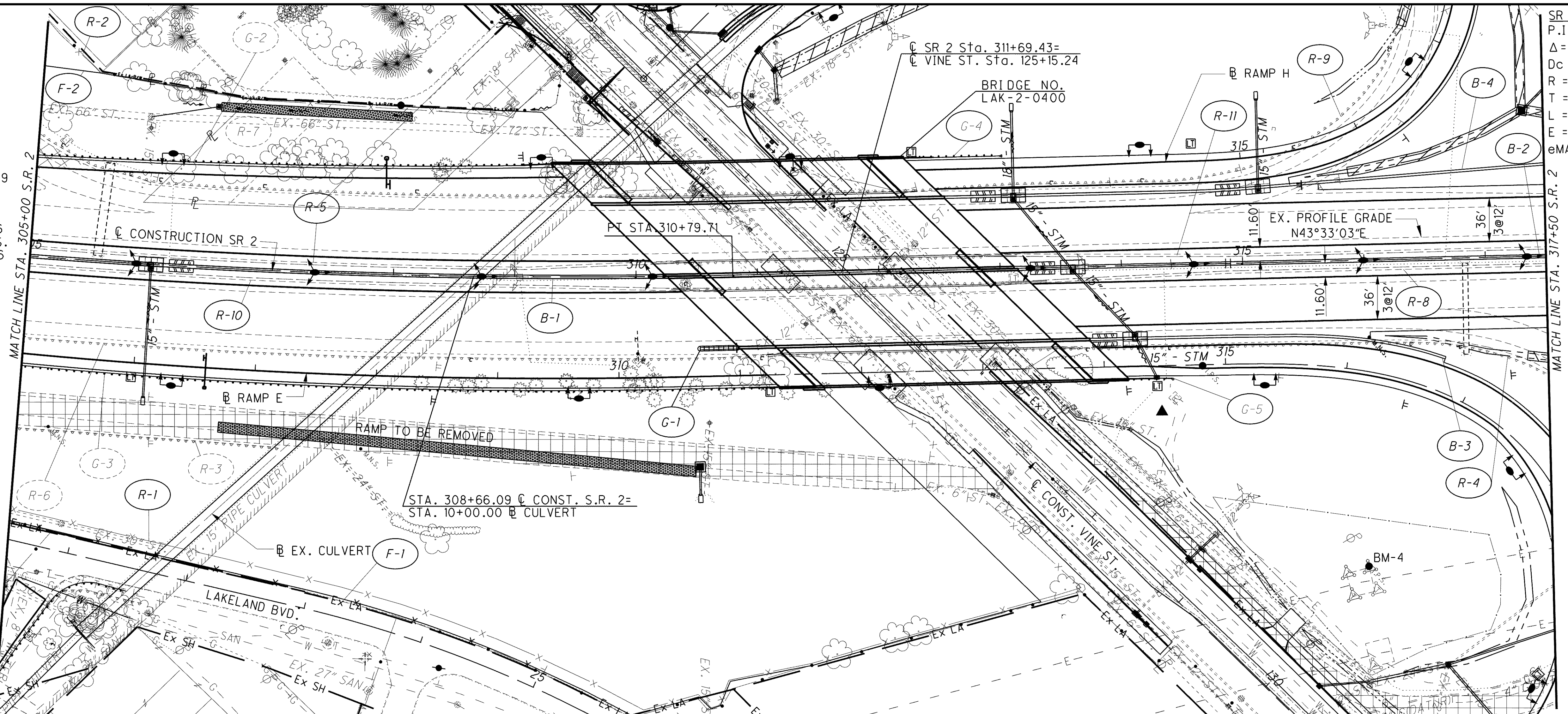


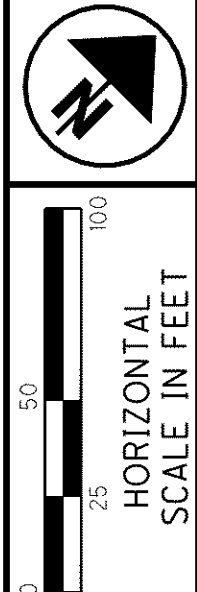
NOTES:

1. SEE SHEETS 947 TO 949 FOR WATER QUALITY BMP DETAILS AND QUANTITIES.
2. SEE SHEETS 903 TO 916 FOR DRAINAGE DETAILS.
3. SEE SHEETS 874 TO 896 FOR DRAINAGE PLAN AND PROFILES.
4. SEE SHEETS 926 TO 938 FOR UNDERDRAIN DETAILS AND SUBSUMMARY.
5. SEE SHEETS 1094 TO 1113 FOR TRAFFIC CONTROL PLANS.
6. SEE SHEETS 1240 TO 1261 FOR LIGHTING PLANS.
7. SEE SHEETS 248 TO 255 FOR SUBSUMMARY TABLES.
8. SEE SHEETS 482 TO 507 FOR VINE STREET RAMP PLAN AND PROFILES.
9. SEE SHEETS 1327 TO 1392 FOR VINE STREET BRIDGE PLANS.



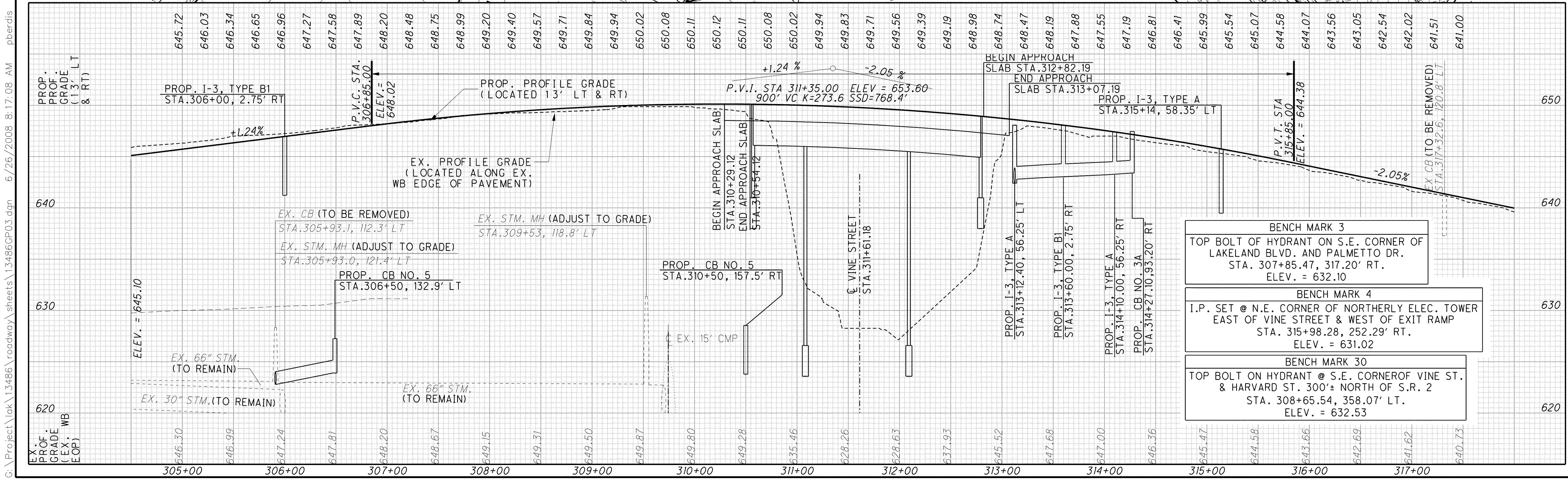
SR 2 CURVE DATA
 P.I. STA. 305+02.97
 $\Delta = 11^\circ 34' 28''$ (LT)
 $D_c = 1^\circ 00' 00''$
 $R = 5,729.48'$
 $T = 580.69'$
 $L = 1,157.42'$
 $E = 29.35'$
 $e_{MAX} = 0.030$

- LEGEND
- EX. WETLANDS
 - ITEM 670 DITCH EROSION PROTECTION, 660.02
 - ITEM 601 ROCK CHANNEL PROTECTION TYPE C W/ FILTER
 - PAVEMENT TO BE REMOVED



CALCULATED PSB
 CHECKED EJA

PLAN AND PROFILE
 STA. 305+00 TO STA. 317+50



- BENCH MARK 3**
TOP BOLT OF HYDRANT ON S.E. CORNER OF LAKELAND BLVD. AND PALMETTO DR.
STA. 307+85.47, 317.20' RT.
ELEV. = 632.10
- BENCH MARK 4**
I.P. SET @ N.E. CORNER OF NORTHERLY ELEC. TOWER EAST OF VINE STREET & WEST OF EXIT RAMP
STA. 315+98.28, 252.29' RT.
ELEV. = 631.02
- BENCH MARK 30**
TOP BOLT ON HYDRANT @ S.E. CORNER OF VINE ST. & HARVARD ST. 300'± NORTH OF S.R. 2
STA. 308+65.54, 358.07' LT.
ELEV. = 632.53

G:\Project\ok\13486\roadway\sheet\13486P03.dgn 6/26/2008 8:17:08 AM pberdis

LAK-2-3.32